

[Home](#)

[Back to Tophat page](#)

Bonding line Aa

on

Bonding line AA

Bonding line AA



Bonding line Ba

Bonding
size
7 1/2
23.5in

**Tophat
Brim**

Bonding

7 1/2
23.5in.

Tophat Brim

interfacing(heavy weight)
two sheets

Seam allowance 1/2in.

size
7 1/2
23.5in.

Tophat Top

interfacing(heavy weight)
two sheets

SITE <http://dr-cos.com>
MAIL info@dr-cos.com
Twitter [@drcos_com](https://twitter.com/@drcos_com)
facebook <https://www.facebook.com/drcos.com>

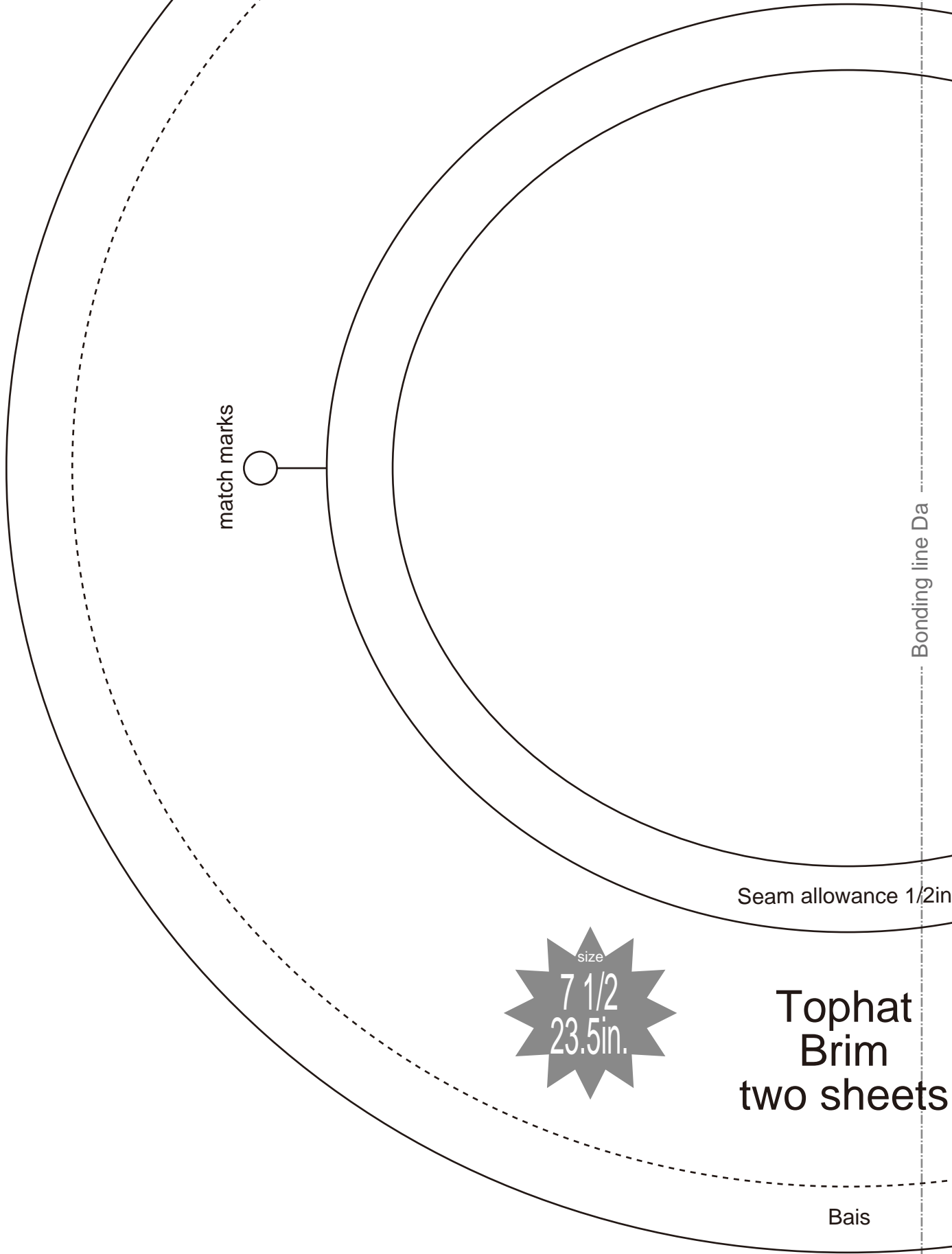
DRCOS

Bonding line AC

DRCOS

SITE <http://dr-cos.com>
MAIL info@dr-cos.com
Twitter [@drcos_com](https://twitter.com/@drcos_com)
facebook <https://www.facebook.com/drcos.com>

Bonding line AC



match marks

Bonding line Da

Seam allowance 1/2in.

size
7 1/2
23.5in.

**Tophat
Brim
two sheets**

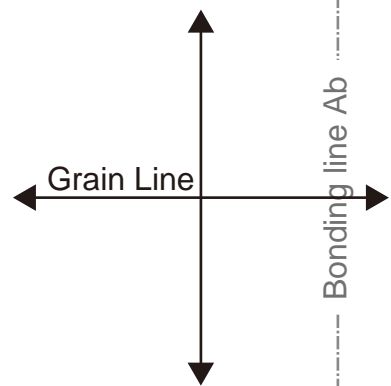
Bais

Bonding line Aa



**Tophat
Side**
one sheets

match marks



match marks



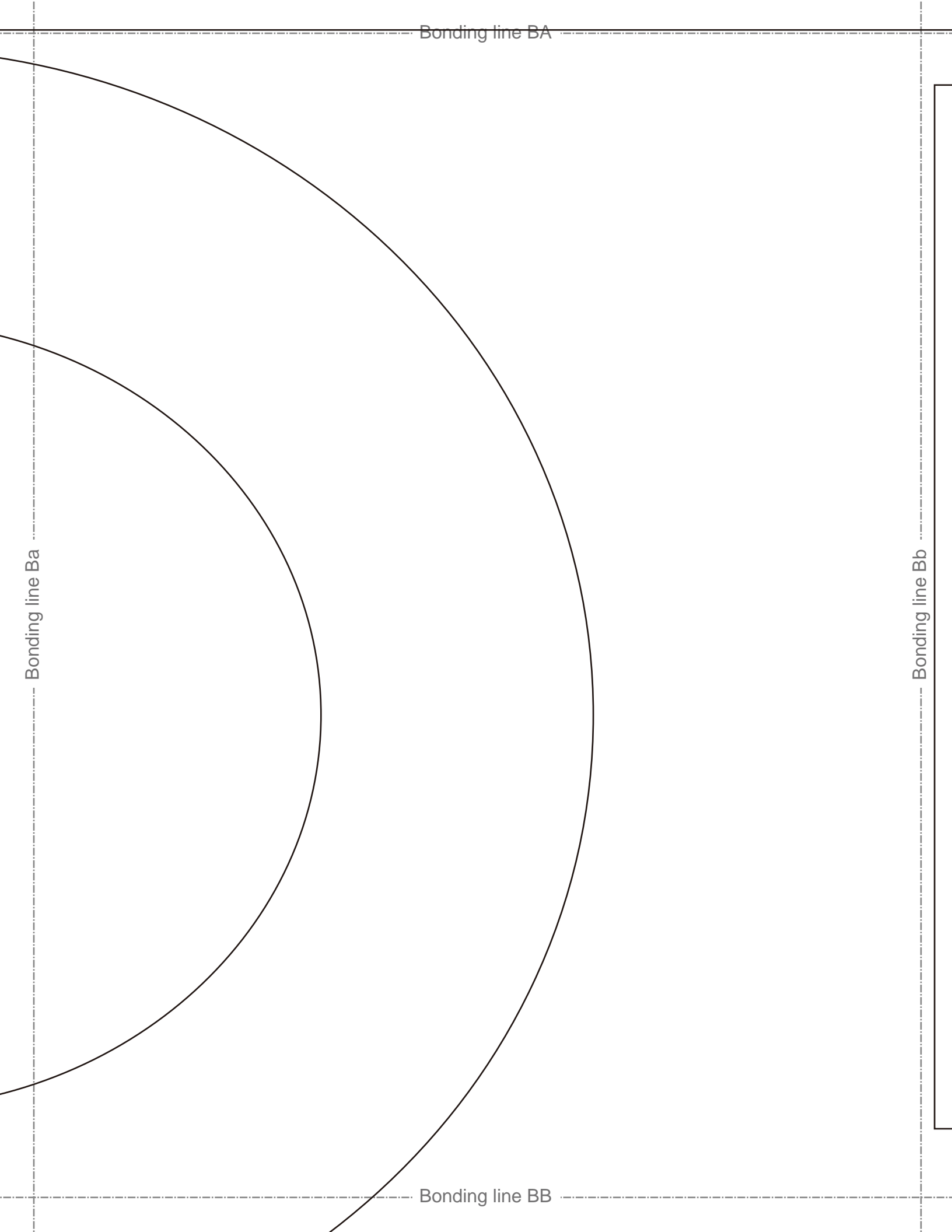
Bonding line BA

Bonding line BA

Bonding line Ba

Bonding line Bb

Bonding line BB



Bonding line BB

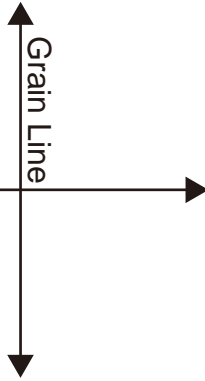
match marks



Tophat
Top
one sheets

DRCOS

SITE <http://drcos.com>
 MAIL info@drcos.com
 T writer <https://twitter.com/drcos.com>
 facebook <https://www.facebook.com/drcoscom>



match marks



Bonding line Cb

Bonding line BC

Seam allowance 1/2in.

DRCOS

Bonding line BC

Bonding line Da

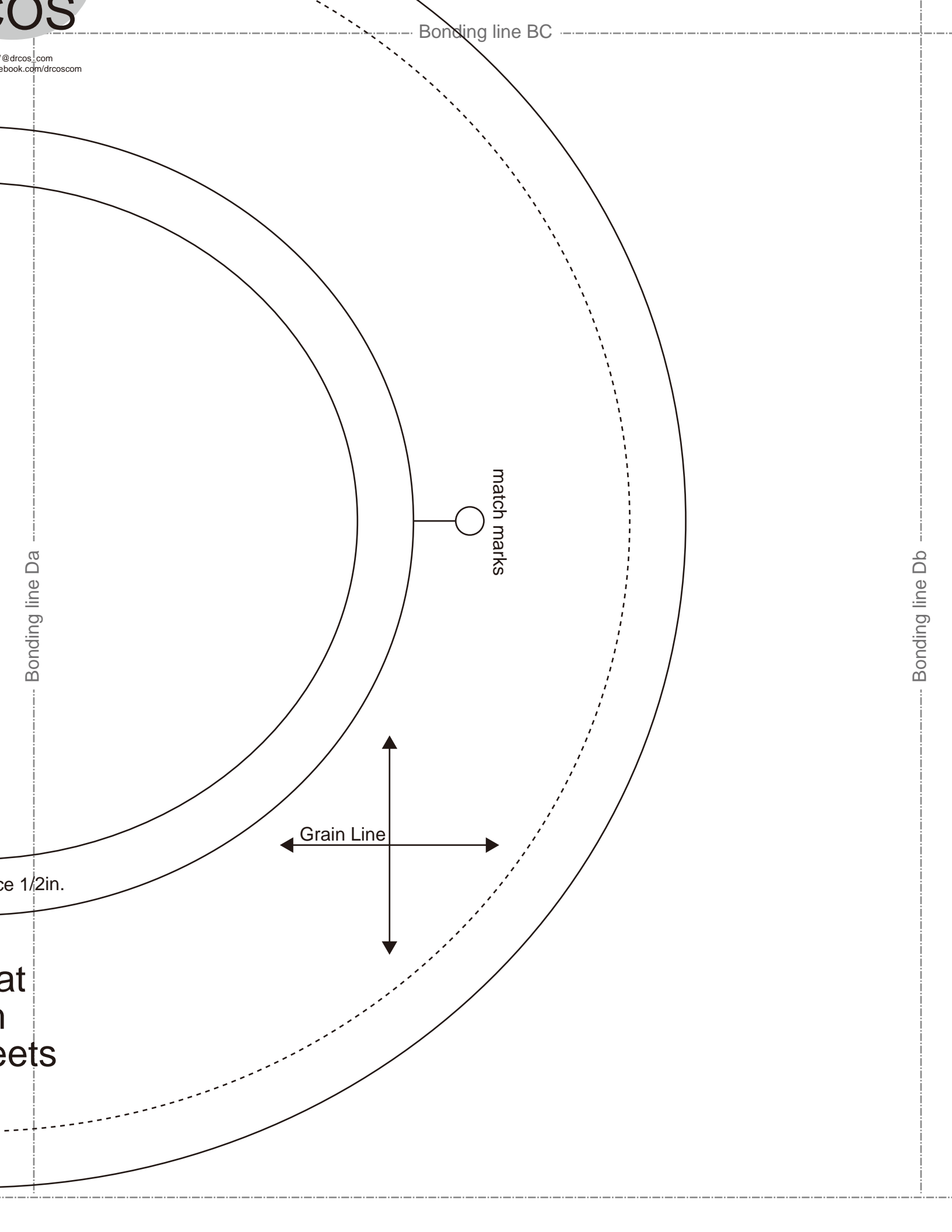
Bonding line Db

ce 1/2in.

at
n
eets

match marks

Grain Line



Bonding line Ab

How to make

Sorry if I haven't made myself understood (well) in English. You know I'm poor at English.

- 1.iron on the interfacing(heavy weight) to "top" "side" "brim"
 - 2."side" is sew up and loop
 - 3."top" and "side" sew pieces
 - 4."brim" is sew up and loop
- The surface and the back are same.
- 5.two "brims" are sewn up by a dotted line.
 - 6.In a "brim", bias (A wire is put in.)
 7. "side" "brim" is sewn up.

Bonding line Ac

Seam allowance 1/2in.

Bonding line CA

Bonding line CA

Bonding line Bb

Bonding line Bc

Bonding line CB

DRCOS

SITE <http://dr-cos.com>

MAIL info@dr-cos.com

Twitter [@drcos_com](https://twitter.com/@drcos_com)

facebook <https://www.facebook.com/drcoscom>

Bonding line Ac

Bonding line Ad

Bonding line DA

Bonding line DA

Bonding line Bc



**Tophat
Side**
interfacing(heavy weight)
one sheets

Bonding line Bd

Bonding line DB

