

1/2in.

[Home](#)
[Back to Squareneckblouse2 page](#)

Grain Line

Bonding line Aa

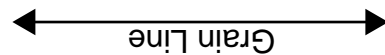
DRCOS
SITE <http://dr-cos.info/en> <http://dr-cos.com/jp>
MAIL info@dr-cos.com
Twitter [@drcos_com](https://twitter.com/@drcos_com)
facebook <https://www.facebook.com/drcoscom>

Button position



Bonding line AA

Bonding line AA



Bonding line Ba

ance 1/2in.

Bonding line AB

Seam allowance 1/2in.

Children's ^{size} 10

Squar neck blouse2
Front Body
Two sheets

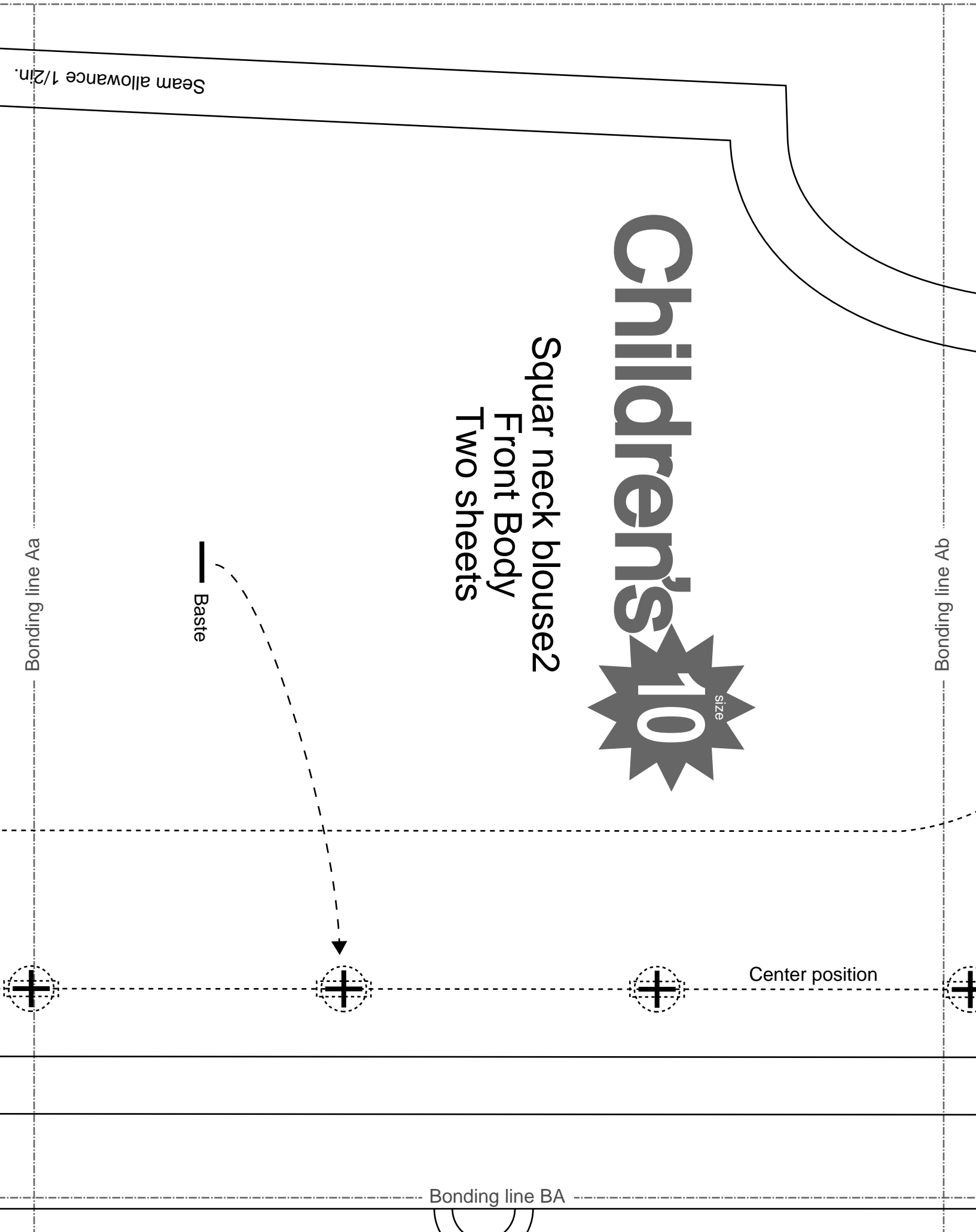
Bonding line Aa

Bonding line Ab

Baste

Center position

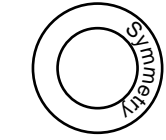
Bonding line BA



Bonding line BA



Children's ^{size} 10



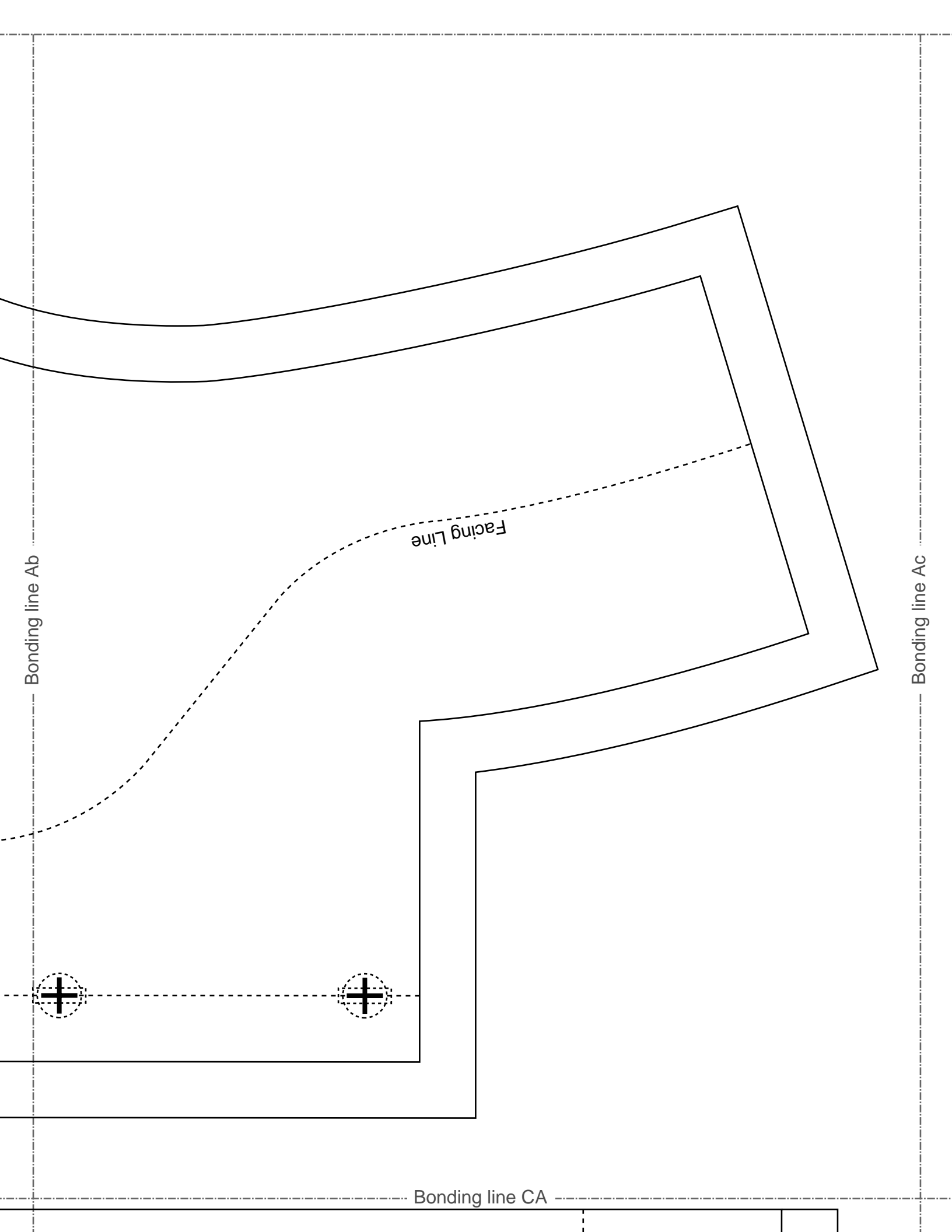
Squar neck blouse2
Back Body
one sheets

Bonding line Ba

Bonding line Bb

Seam allowance 1/2

Bonding line BB



Bonding line Ab

Facing Line

Bonding line Ac

Bonding line CA

Bonding line CA

Bonding line Bb

Bonding line Bc

Facing Line

SITE <http://dr-cos.info/en>, <http://dr-cos.com/jp>
MAIL info@dr-cos.com
Twitter <https://twitter.com/dr-cos>
facebook <https://www.facebook.com/drcosjpm>

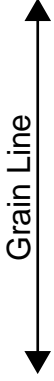
DRCOS

Bonding line CB

Bonding line Cb

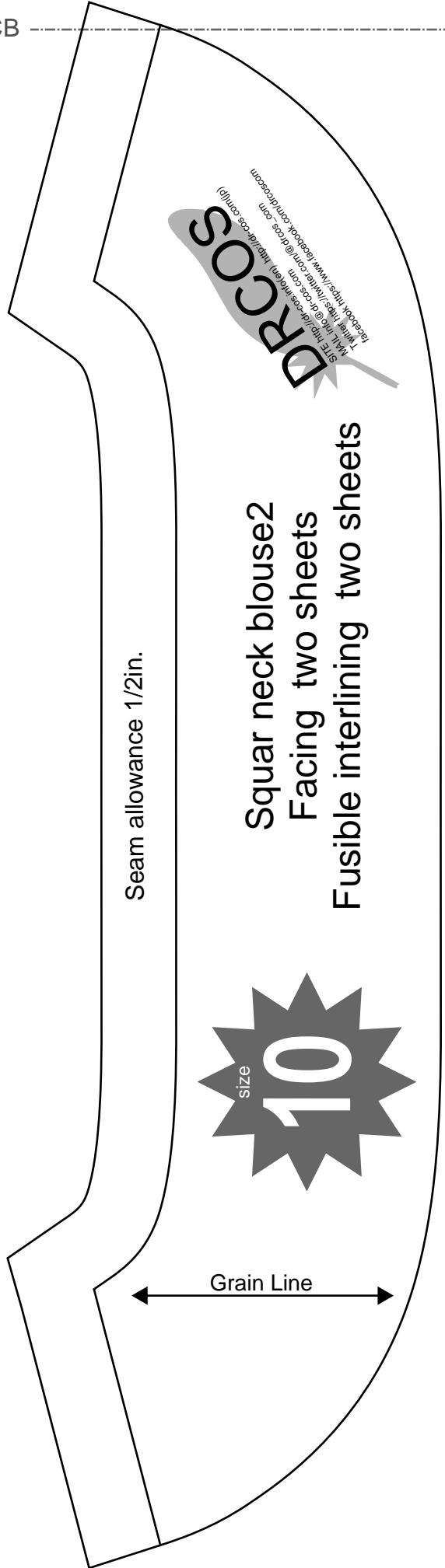
Seam allowance 1/2in.

Squar neck blouse2
Facing two sheets
Fusible interlining two sheets

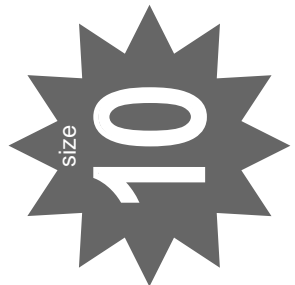


PRCOS
(df)urac:scs-
uobscocp/ul
uro

Bonding line CB



Seam allowance 1/2in.



Squar neck blouse2
Facing two sheets
Fusible interlining two sheets

PRCOS
SITE: <http://drcos.ireland.com>
Twitter: <https://twitter.com/drcos>
Facebook: <https://www.facebook.com/drcos.com>
(df)urac:scs-
uobscocp/ul
uro

Bonding line CC

Bonding line Cc

Bonding line CC

Children's
10
size

Bonding line Db

Bonding line Dc

Bonding line CD