

I'm not going to put any Facing here.

Facing Cut Line

Bonding line AA

Bonding line Aa



Bonding line AA

Seam allowance 1/2in.

Children's ^{size} 10

Sleeveless Coat
Front body facing
two sheets

Flexible interlining

Bonding line Ba

Button

Front body facing
two sheets
Fusible interlining
two sheets

Bonding line AB

Bonding line AC

Bonding line Ca



Grain line



Button

Bonding line AC



Bonding line AD

Bonding line Da

DRCCOS
@drccos
MAIL: info@drccos.com
facebook: https://www.facebook.com/drccos.com

DRCCOS
SITE: http://drccos.info/en/ | http://drccos.com/jp/
MAIL: info@drccos.com | @drccos_com
facebook: https://www.facebook.com/drccos.com



Sleeveless Coat
Back body facing
one sheets
Fusible interlining
one sheets

Seam allowance 1/2in.

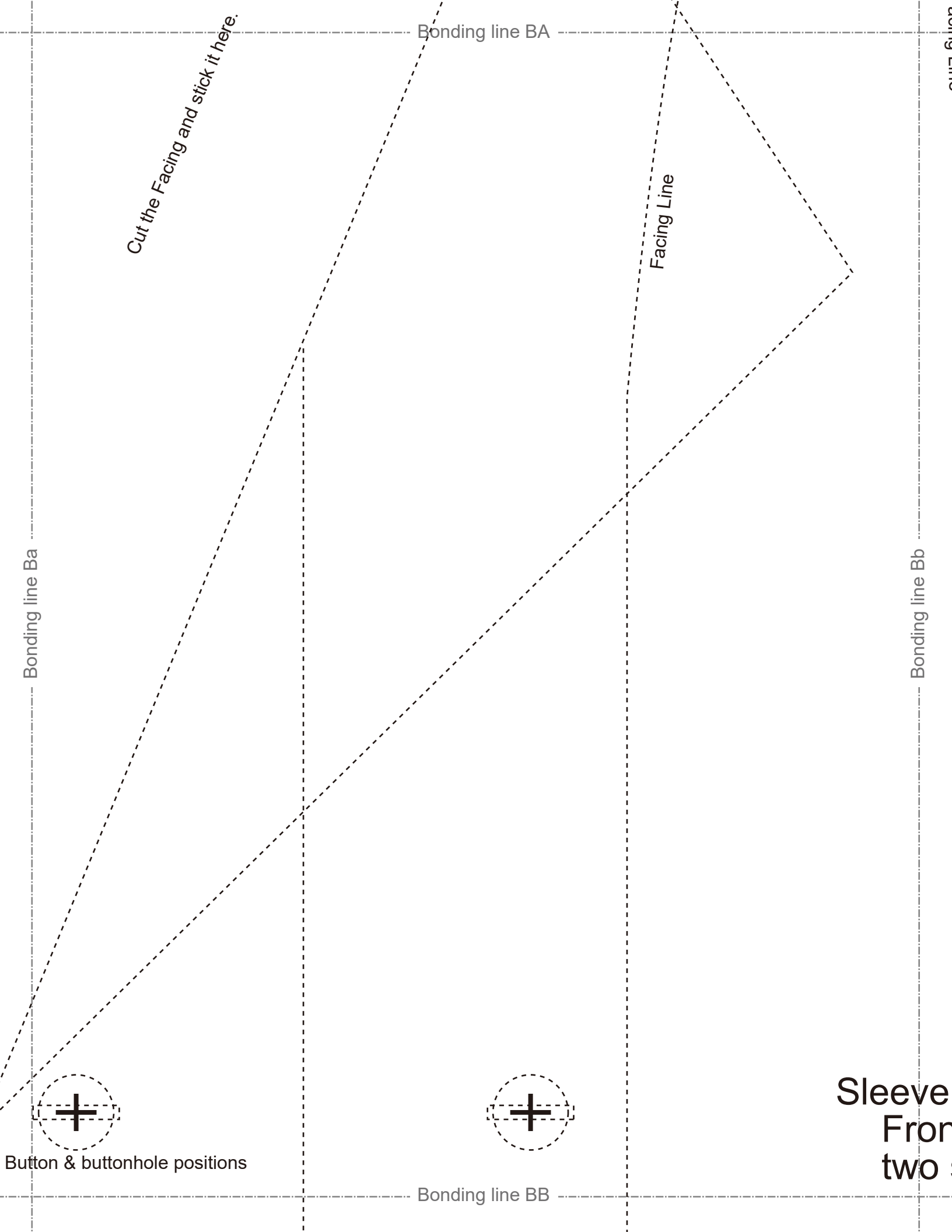
Bonding line Aa

Bonding line Ab

○ Collar position

it here.

Bonding line BA



Cut the Facing and stick it here.

Bonding line BA

Facing Line

Bonding line Ba

Bonding line Bb



Button & buttonhole positions

Bonding line BB

Sleeve
Front
two s



Bonding line BB

Center position

Bonding line Ca

Bonding line Cb

Bonding line BC

Grain Line

Chilo

Line



Bonding line BC

Bonding line Da

Bonding line Db

Seam allowance 1/2in.

Bonding line BD

Sleeve
Back
or
Fusik
or

Grain Line

Bonding line Ab

Bonding line Ac

DRCOS

SITE [http://dr-cos.info\(en\)](http://dr-cos.info(en)) [http://dr-cos.com\(jp\)](http://dr-cos.com(jp))
MAIL info@dr-cos.com
Twitter https://twitter.com/drcos_com
facebook <https://www.facebook.com/drcoscom>

Sit position

Bonding line CA

Facing L

Seveless Coat
Front body
two sheets

Bonding line Bb

Facing Line

Bonding line CA

Bonding line Bc

Bonding line CB



Bonding line CB



Bonding line Cb

Baste

Bonding line Cc

Children's



10

Bonding line CC

Bonding line CC

Bonding line Db

CSOS
http://dr-cos.com (p
er.com/@dr-cos.com
www.facebook.com/dr-cos.com

Bonding line

Bonding line CD

Bonding line Ac

Bonding line Ad

Bonding line DA

Seam allowance 1/2in.

Bonding line DA



Bonding line Bc

Bonding line Bd

Sleeveless Coat
Back body
two sheets

Children's
10
size

Bonding line DB



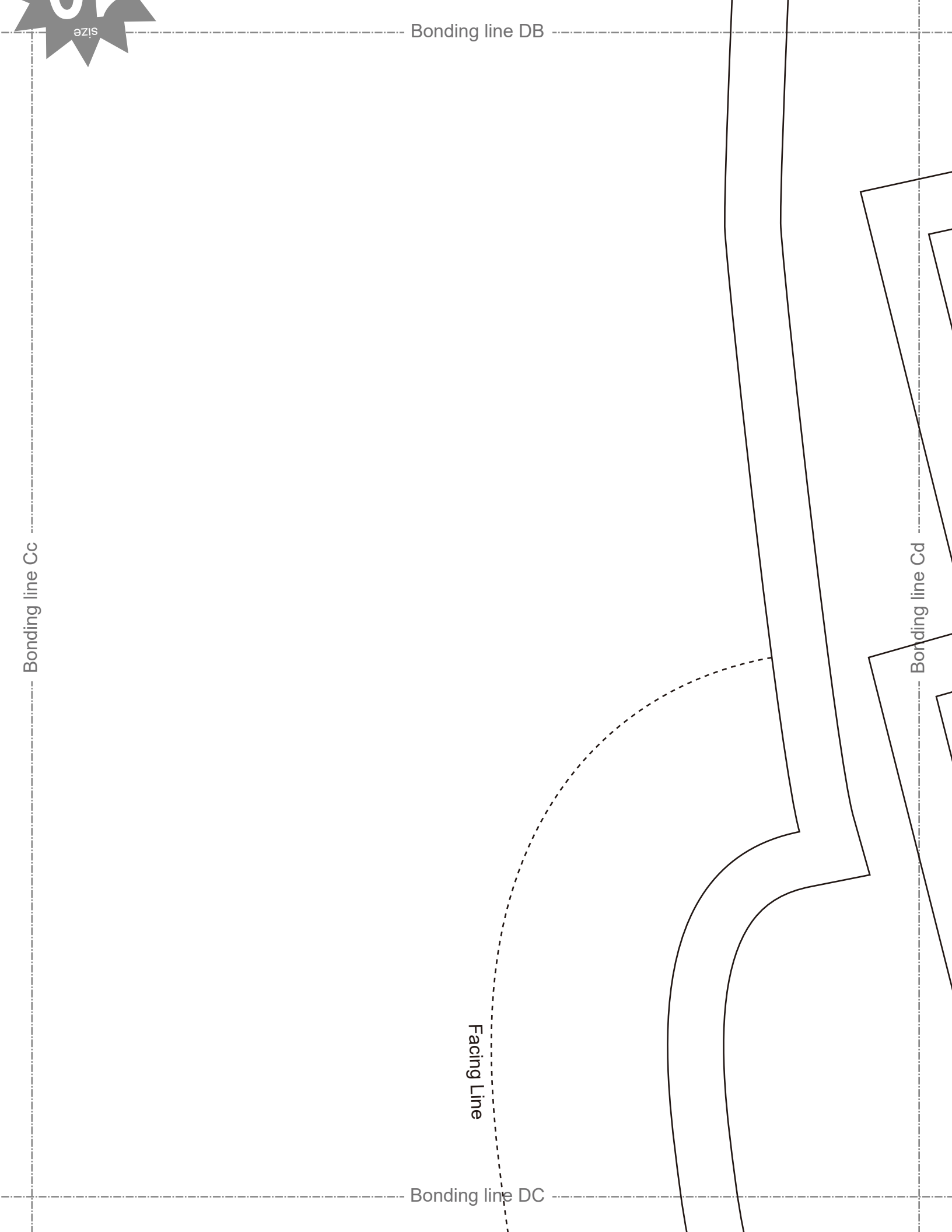
Bonding line DB

Bonding line Cc

Bonding line Cd

Facing Line

Bonding line DC



Bonding line DC

Facing Line

Bonding line Dd

Bonding line DD

Bonding line

DRCO
 SITE <http://dr-cos.info/en> <http://dr-cos.info>
 MAIL info@dr-cos.com
 Twitter <https://twitter.com/drcos>
 facebook <https://www.facebook.com/drcos>

Bonding line EB

Seam allowance 1/2

Sleeveless Coat
collar stand
two sheets
Fusible interlining
one sheets



Child

Seam allowance 1/2

Sleeveless Coat
Collar
two sheets
Fusible interlining
one sheets

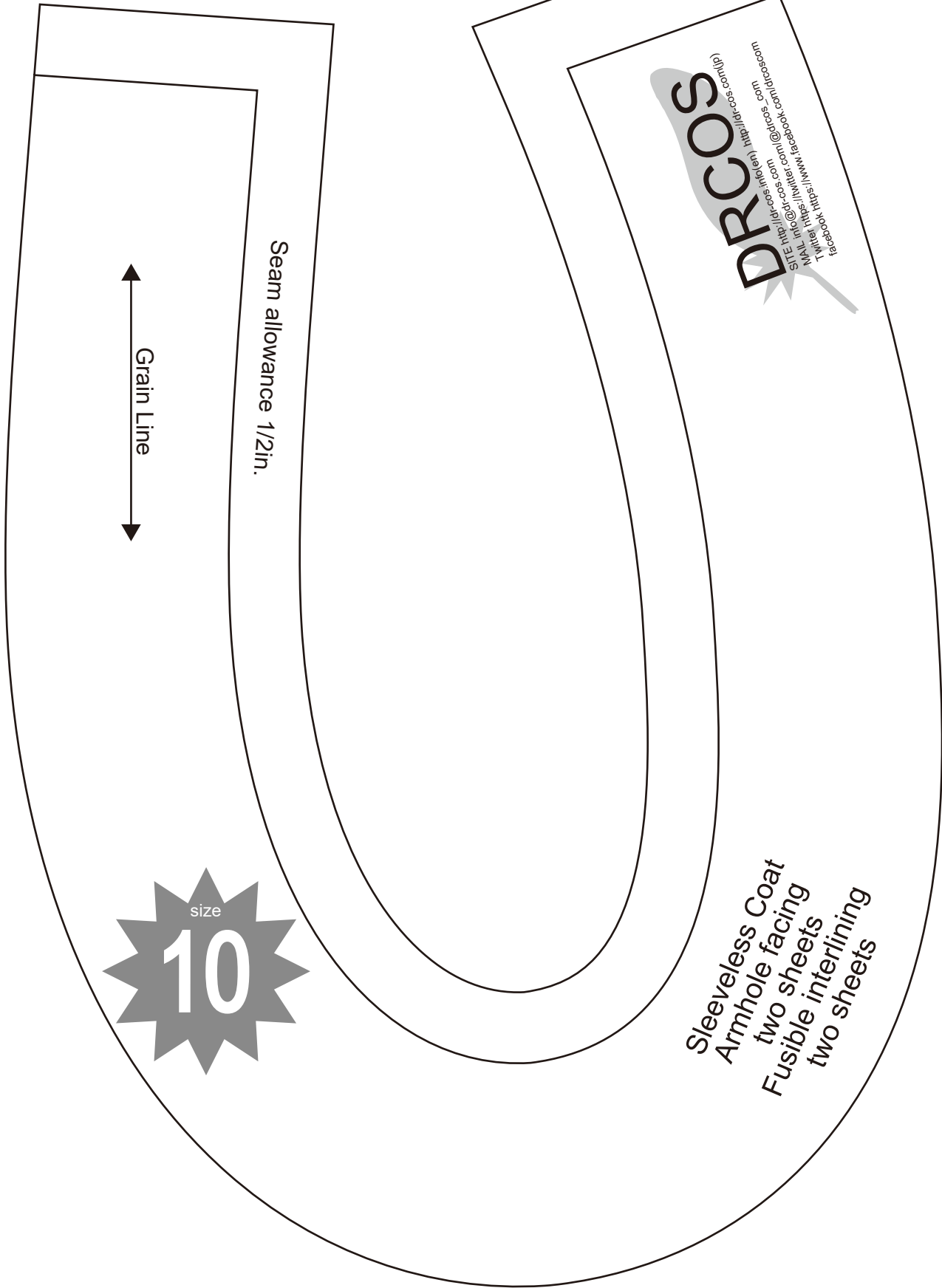


Child

Bonding line EC

Bonding line Cd

Bonding line Ce



Grain Line

Seam allowance 1/2in.

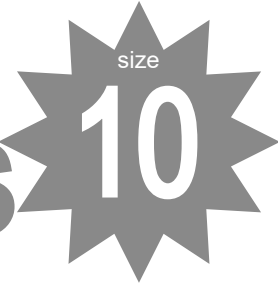
size
10

Sleeveless Coat
Armhole facing
two sheets
Fusible interlining
two sheets

DRCOS
Tel: 813.271.1111
Fax: 813.271.1111
www.drcos.com
www.facebook.com/drcos.com
www.instagram.com/drcos.com
www.pinterest.com/drcos.com
www.linkedin.com/company/drcos

ance 1/2in.

Children's

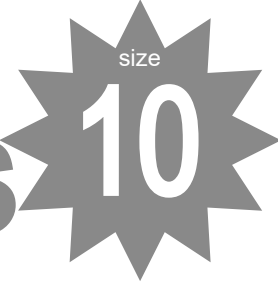


DRCOS

SITE [http://dr-cos.info\(en\)](http://dr-cos.info(en)) [http://dr-cos.com\(jp\)](http://dr-cos.com(jp))
MAIL info@dr-cos.com
Twitter https://twitter.com/@drcos_com
facebook <https://www.facebook.com/drcoscom>

ance 1/2in.

Children's



DRCOS

SITE [http://dr-cos.info\(en\)](http://dr-cos.info(en)) [http://dr-cos.com\(jp\)](http://dr-cos.com(jp))
MAIL info@dr-cos.com
Twitter https://twitter.com/@drcos_com
facebook <https://www.facebook.com/drcoscom>

Bonding line Ce

Bonding line Cf