

Bonding line Aa

Bonding line AA

Bonding line AA

Bonding line Ba

LADIES'S
size

Slacks
Front Body
two sheets

Bonding line AB

Bonding line AB

Bonding line Ca

Bonding line AC



Grain Line

Bonding line AC

Bonding line Da

DR

SITE <http://dr-cos.in>
MAIL info@dr-cos.c
Twitter <https://twitter>
facebook <https://ww>

Seam allowance 1in.

Bonding line AD

Bonding line Aa

Zip ends

Bonding line BA

Bonding line Ab

Slacks
 Extension parts
 one sheets
 Fusible interlining
 one sheets

Grain Line

DRCOS

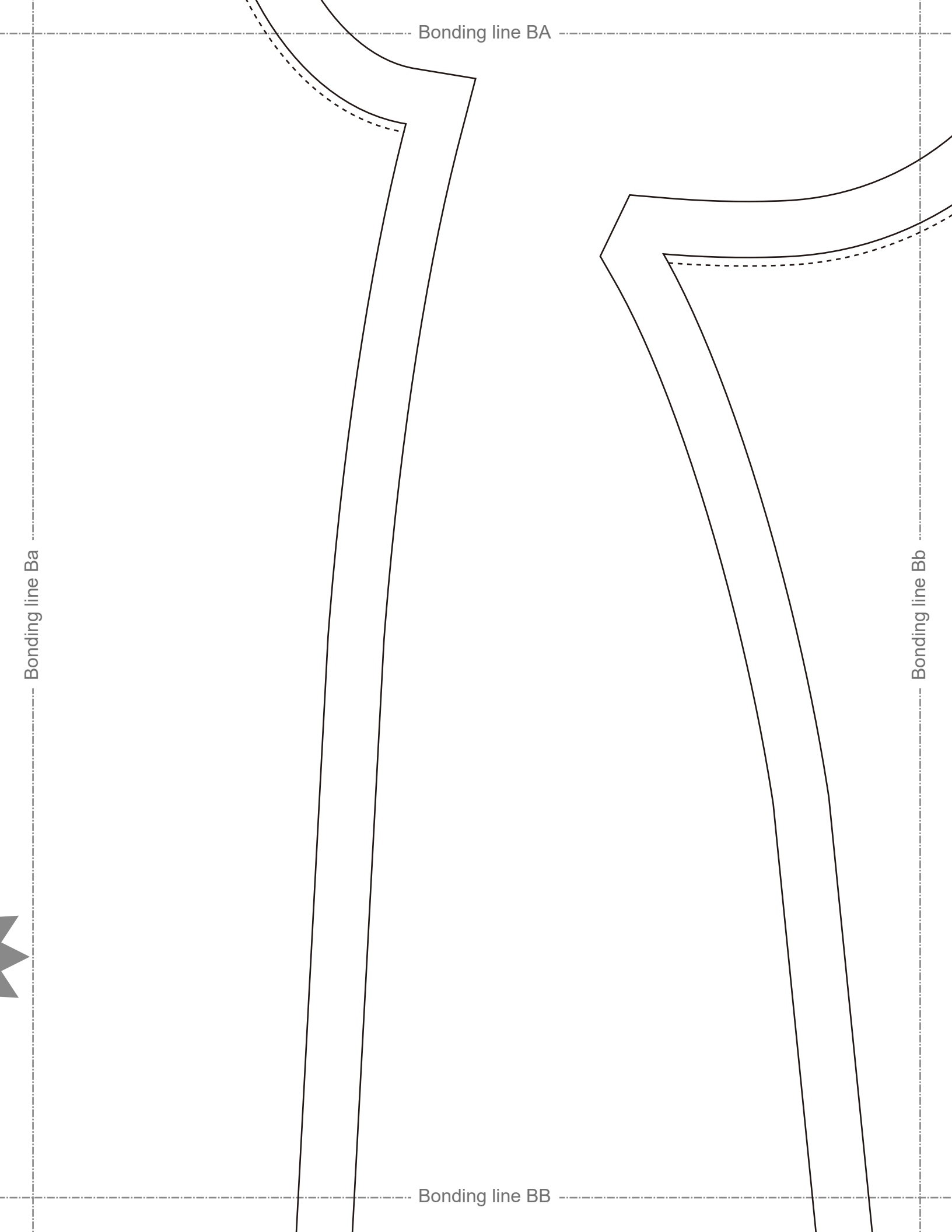
SITE <http://dr-cos.info/en> <http://dr-cos.com/p>
 MAIL info@dr-cos.com
 Twitter https://twitter.com/drcos_com
 facebook <https://www.facebook.com/drcos.com>

Seam allowance 1/2in.



Zip ends





Bonding line BA

Bonding line BB

Bonding line Ba

Bonding line Bb

Bonding line Ca

Bonding line BB

Seam allowance 1/2in.

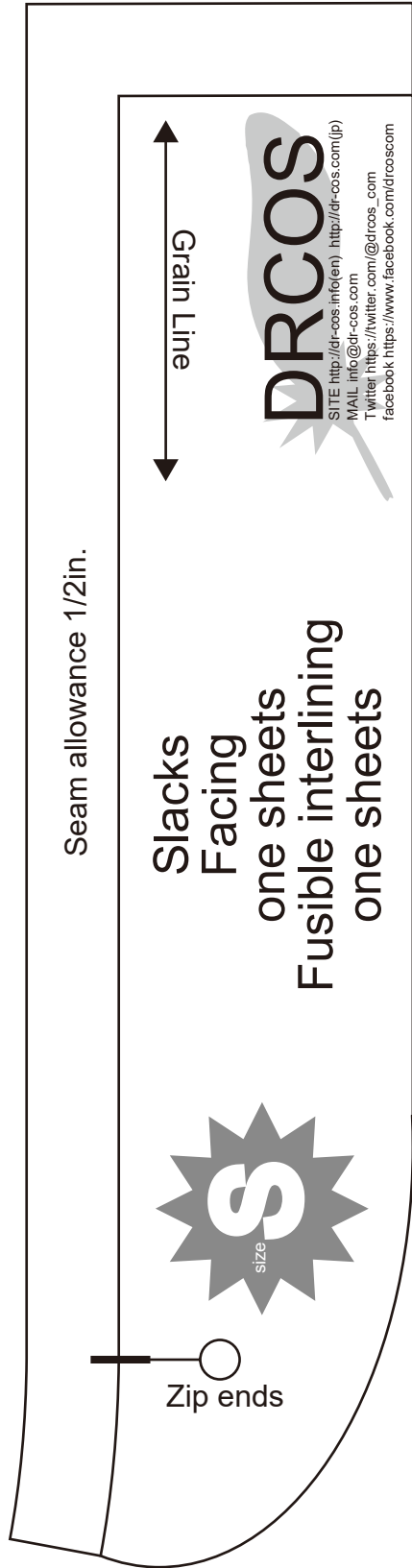
Bonding line BC

Bonding line Cb
Seam allowance 1/2in.

Bonding line Da

DRCOS
 SITE [http://dr-cos.info\(en\)](http://dr-cos.info(en)) [http://dr-cos.com\(jp\)](http://dr-cos.com(jp))
 MAIL info@dr-cos.com
 Twitter [@drcos_com](https://twitter.com/@drcos_com)
 Facebook <https://www.facebook.com/drcoscom>

Bonding line BC



Bonding line BD

Bonding line Db

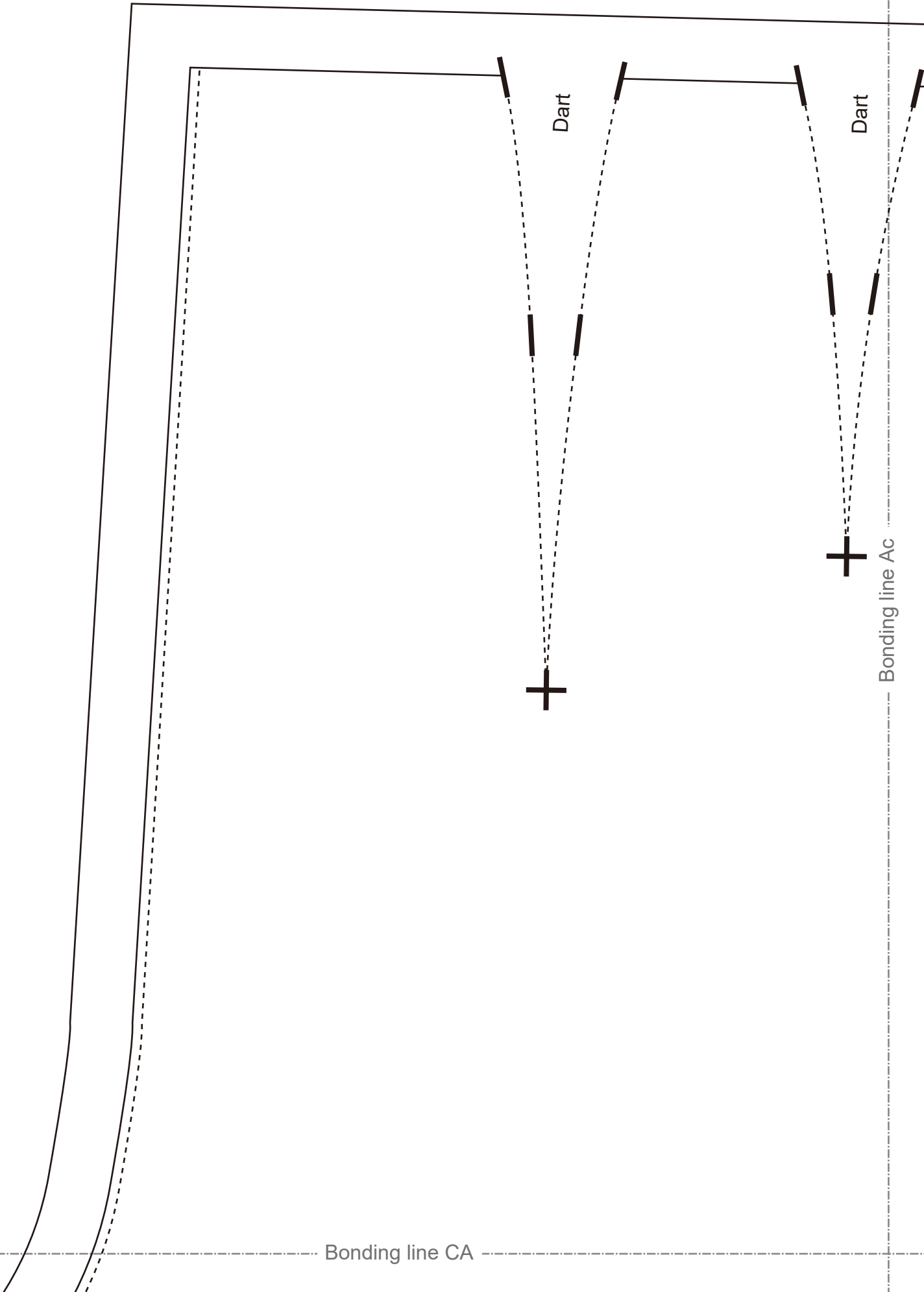
Bonding line Ab

Bonding line CA

Bonding line Ac

Dart

Dart



Bonding line CA

Bonding line Bb

Bonding line Bc

LADIES'  size S

Slacks
Back Body
two sheets

Bonding line CB

two sheets

Bonding line CB

Bonding line Cc



Grain Line

Bonding line CC

Seam allowance 1/2in

Bonding line Cb

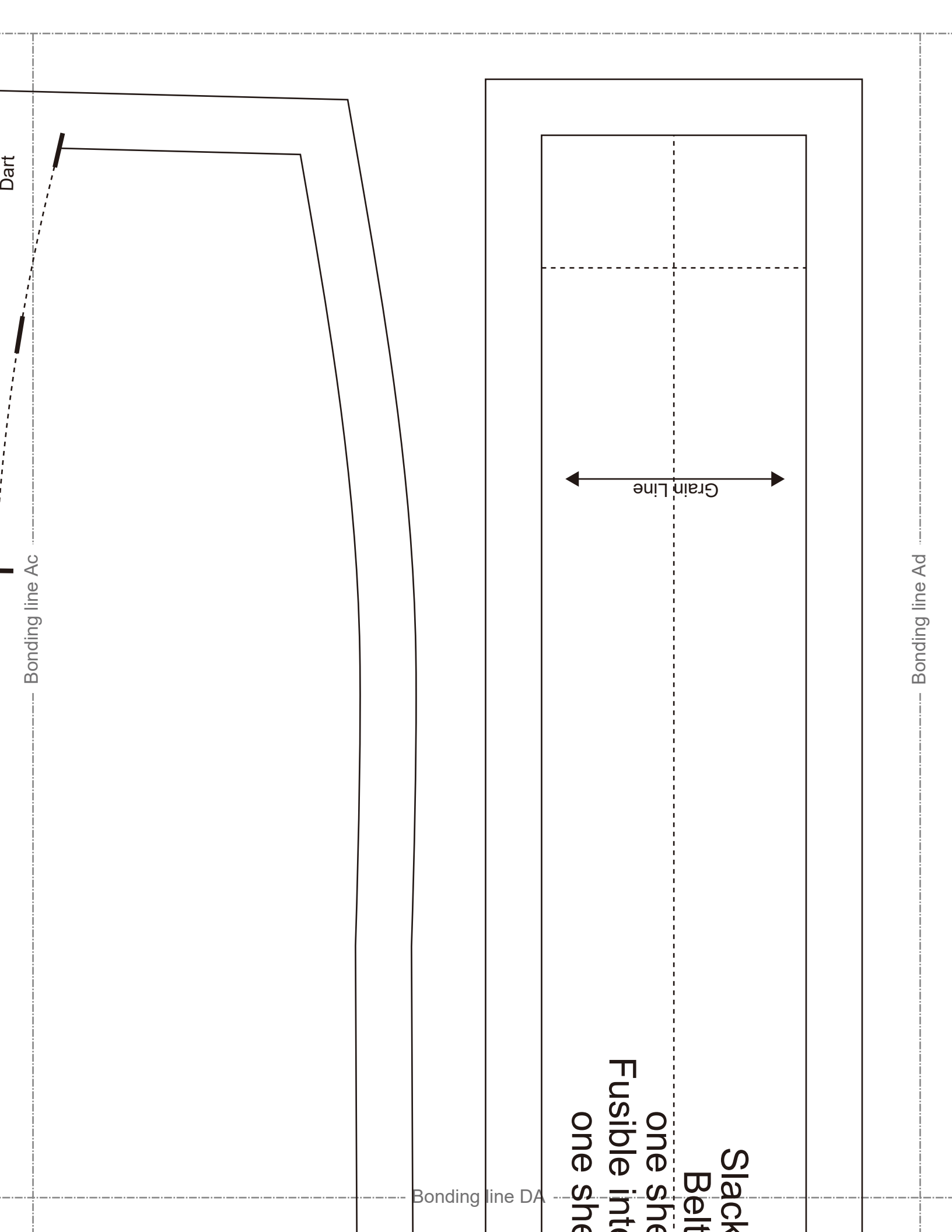
Bonding line CC

Bonding line Db

Bonding line Dc

Seam allowance 1in.

Bonding line CD



Bonding line Ac

Dart

Bonding line DA

Slack
Belt
Fusible into
one sheath

Grain Line

Bonding line Ad

Seam allowance 1/2in.

Blacks
Belt
e sheets
e interlining
e sheets

LADIES'S
size
S

Bonding line Bc

Bonding line Bd

Bonding line DA

Bonding line DB

Bonding line Cc

Bonding line DB



Bonding line Cd

Bonding line DC

Bonding line DC

Bonding line Dc

Bonding line Dd



Bonding line DD