

Seam allowance 1/2in.



Bonding line Aa

Bonding line AA  
two sheets

Bonding line AA  
Skinny pants  
Front Body  
two sheets

# Children's



Twice sewing

Bonding line Ba

**DRCOS**  
SITE <http://dr-cos.info/en> <http://dr-cos.com/jp>  
MAIL [info@dr-cos.com](mailto:info@dr-cos.com)  
Twitter <https://twitter.com/dr-cos>  
facebook <https://www.facebook.com/drcoscom>

Bonding line AB

**DRCO**

SITE <http://dr-cos.info/en> <http://dr-cos.com>  
MAIL [info@dr-cos.com](mailto:info@dr-cos.com)  
Twitter [@drcos](https://twitter.com/@drcos)  
facebook <https://www.facebook.com/drcos>

Bonding line Aa

Bonding line Ab

Twice sewing

# Children's size 4

Skinny pants

Back Body

Bonding line BA

two sheets

# Back Body two sheets

Bonding line BA

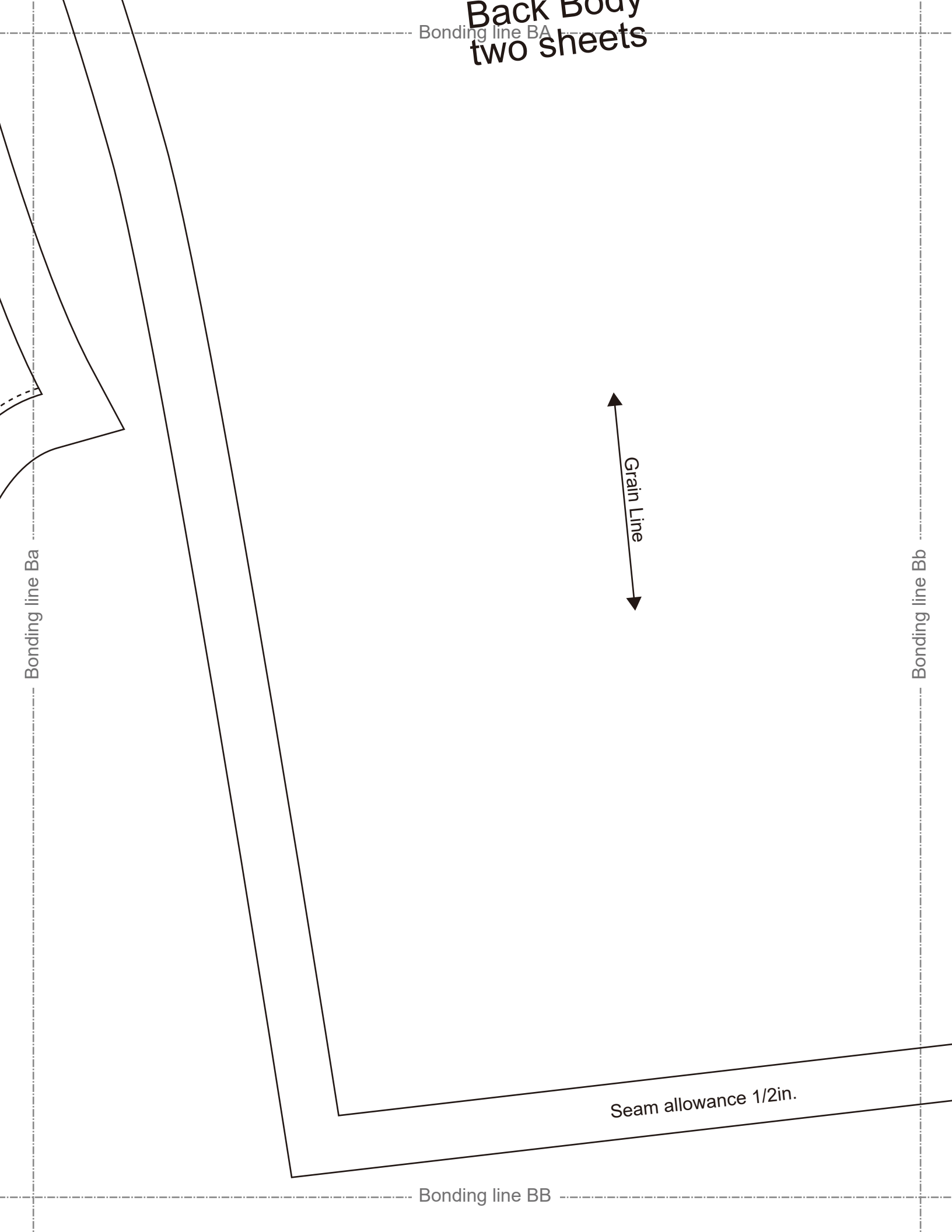
Bonding line Ba

Bonding line Bb



Seam allowance 1/2in.

Bonding line BB



**COS**

info(en) [http://dr-cos.com\(jp\)](http://dr-cos.com(jp))  
s.com  
tter.com/@drcos\_com  
www.facebook.com/drcoscom

Bonding line Ab

Child

Bonding line Ac

Grain Line

SH  
t

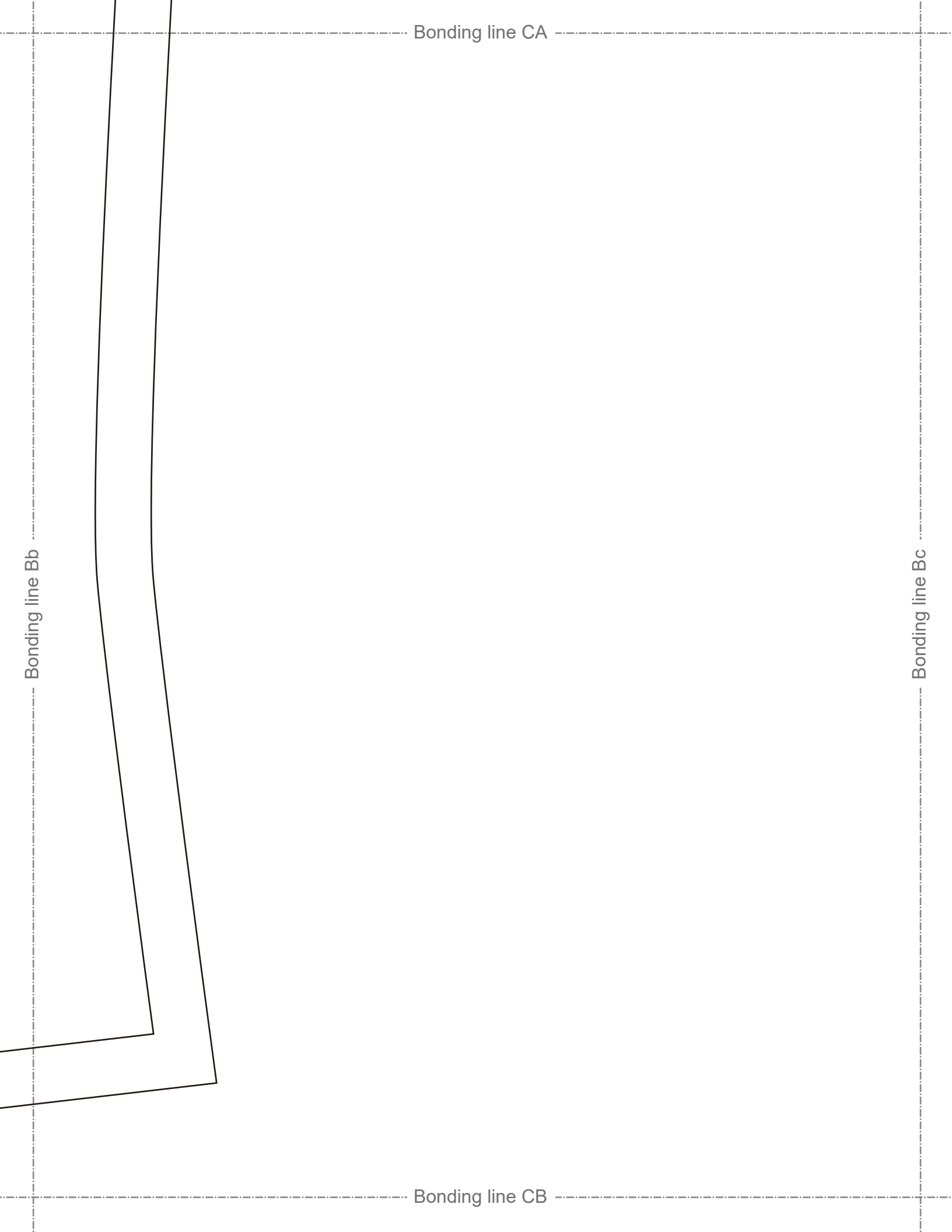
Bonding line CA


Bonding line CA

Bonding line Bb

Bonding line Bc

Bonding line CB



dren's  size 4

**DRCOS**  
SITE [http://dr-cos.info\(en\)](http://dr-cos.info(en)) [http://dr-cos.com\(jp\)](http://dr-cos.com(jp))  
MAIL [info@dr-cos.com](mailto:info@dr-cos.com)  
Twitter [https://twitter.com/@drcos\\_com](https://twitter.com/@drcos_com)  
facebook <https://www.facebook.com/drcoscom>

Bonding line Ac



Grommet position

Bonding line Ad

Skinny pants  
Belt  
two sheets

Seam allowance 1/2in.

Bonding line DA