

DRCOS

SITE <http://dr-cos.info/en> <http://dr-cos.com/jp>
MAIL info@dr-cos.com
Twitter https://twitter.com/dracos_com
facebook <https://www.facebook.com/drcoscom>

Twice sewing

Bonding line AA

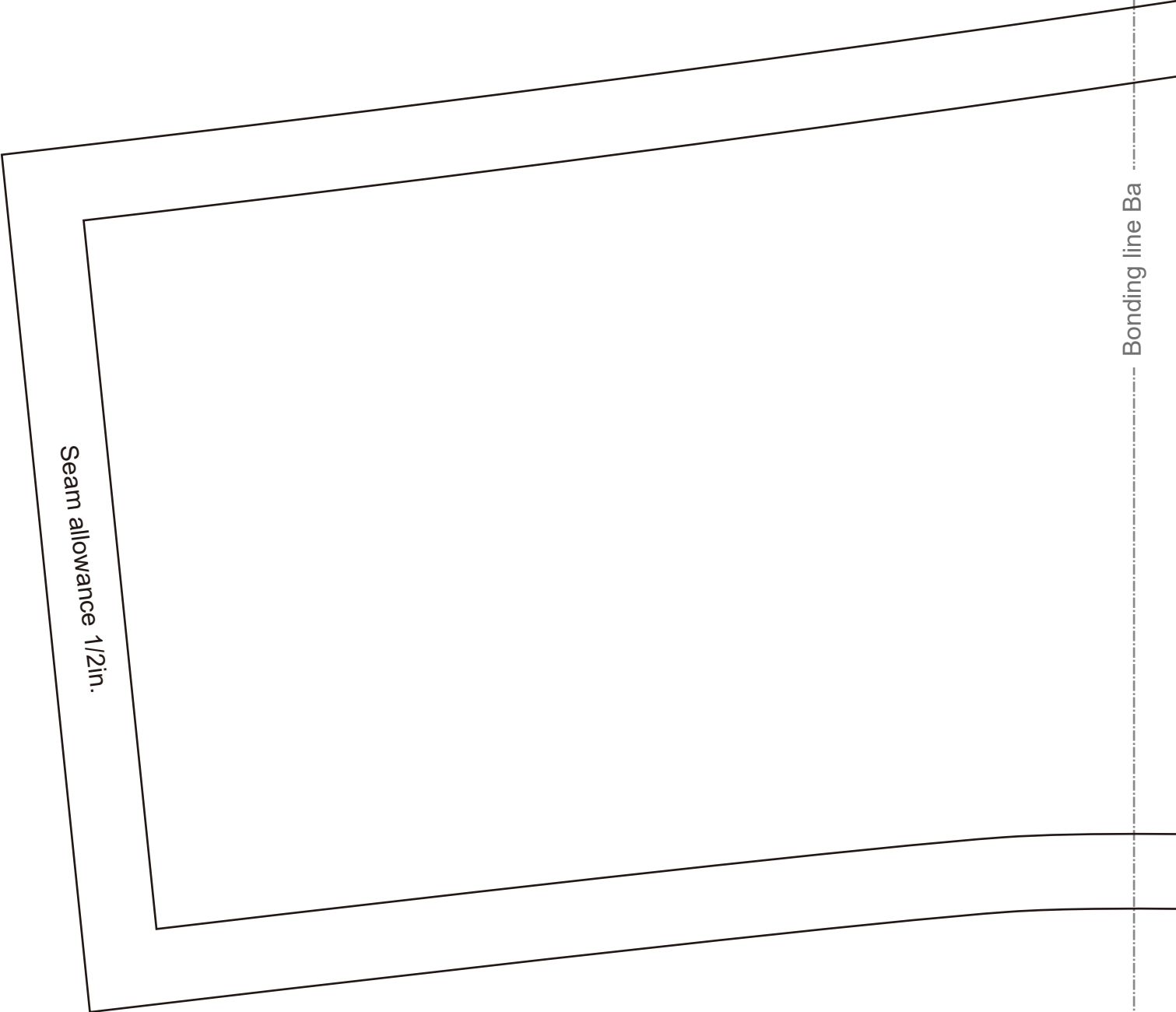
Bonding line Aa

Bonding line AA

Bonding line Ba

Seam allowance 1/2in.

Bonding line AB



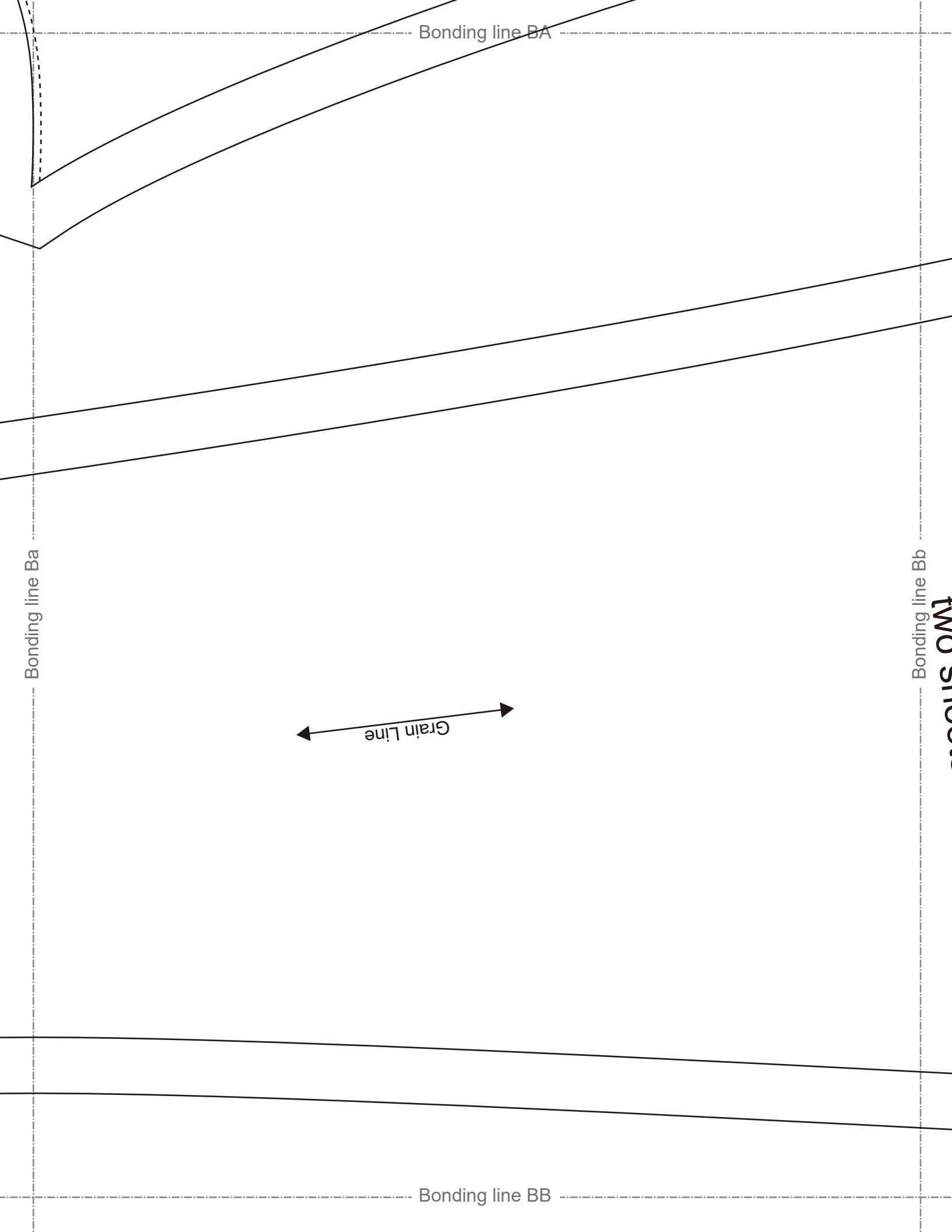
Bonding line Aa

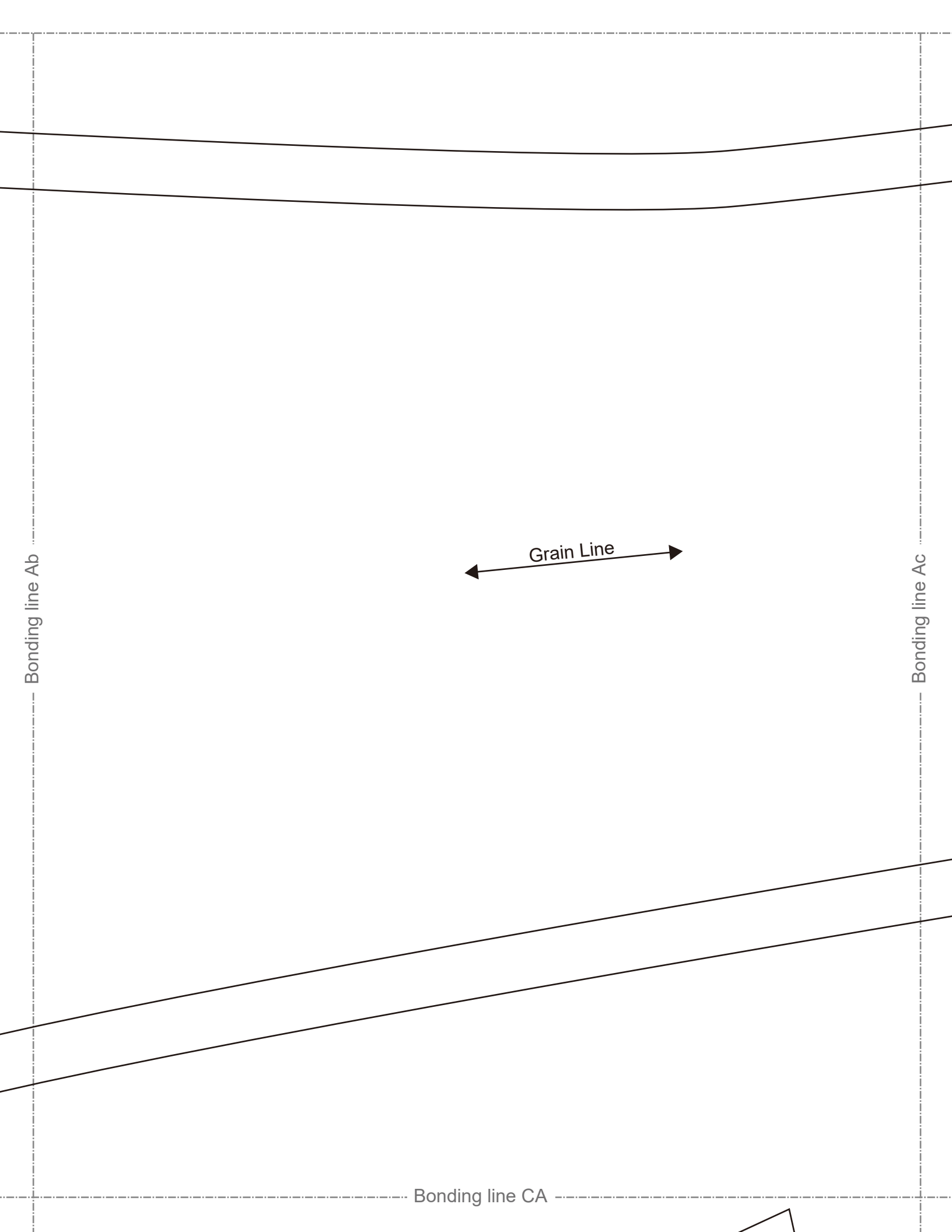
children's ^{size} 10

Skinny pants
Back Body
two sheets

Bonding line Ab

Bonding line BA





Bonding line CA

Twice sewing

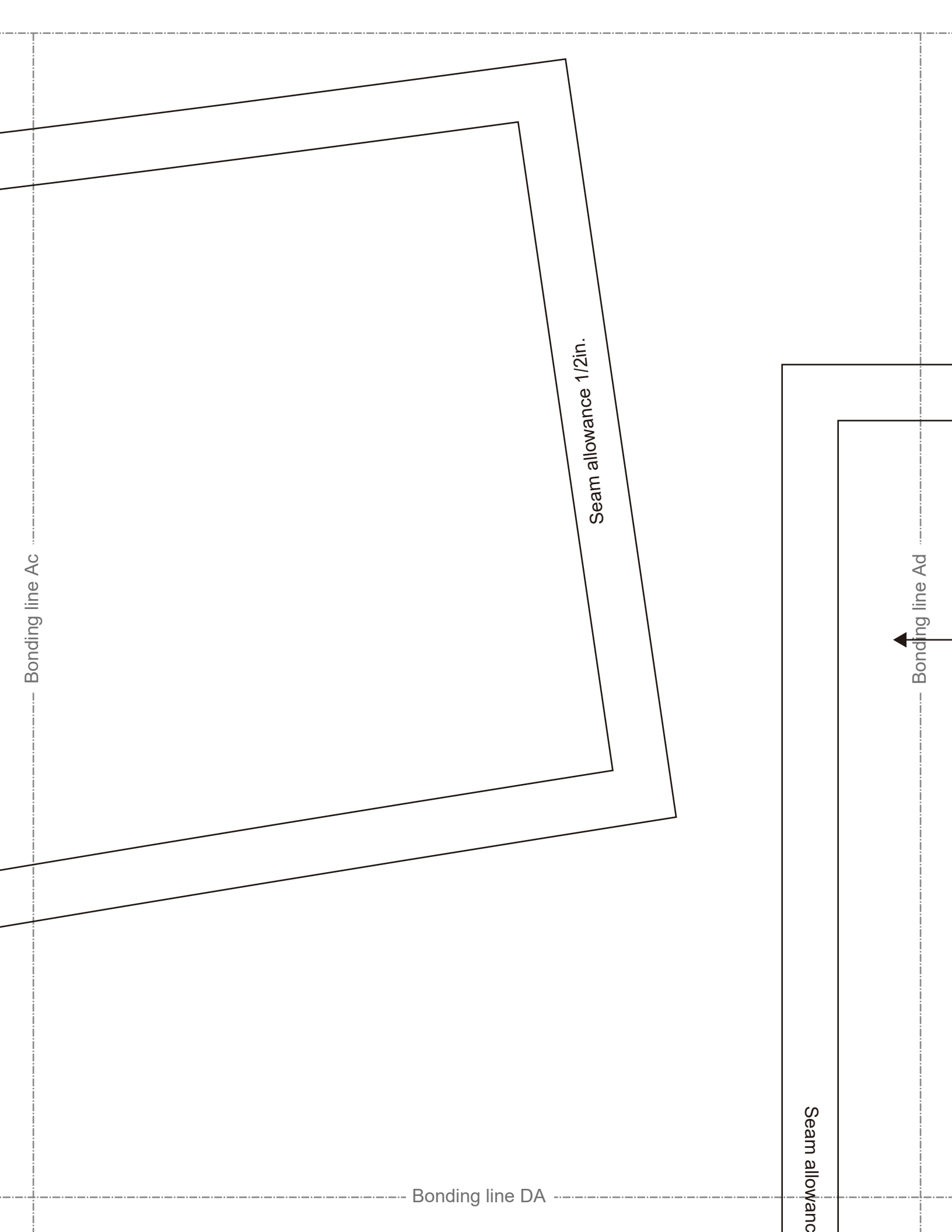
Bonding line Bc

Bonding line CB

Bonding line Bb

Skinny pants
Front Body
two sheets

Children's ^{size} 10



Bonding line DA

allowance 1/2in.

Bonding line Bd

Bonding line Bc

DRCOS
 SITE [http://dr-cos.info\(en\)](http://dr-cos.info(en)) [http://dr-cos.com\(ip\)](http://dr-cos.com(ip))
 MAIL info@dr-cos.com
 Twitter <https://twitter.com/dr-cos>
 facebook <https://www.facebook.com/drcoscom>

Bonding line DB

Bonding line Ae

Childrer

Bonding line EA



Skinny pe
Belt
two shee

Grain Line



Bonding line Ad

Bonding line Be

DRCOS
SITE <http://dr-cos.info/en> <http://dr-cos.com/jp>
MAIL info@dr-cos.com
Twitter https://twitter.com/dr-cos_com
facebook <https://www.facebook.com/drcoscom>

men's **size 10**

Bonding line EA

Grommet position

Bonding line EB

ny pants
belt
sheets

Bonding line Bd