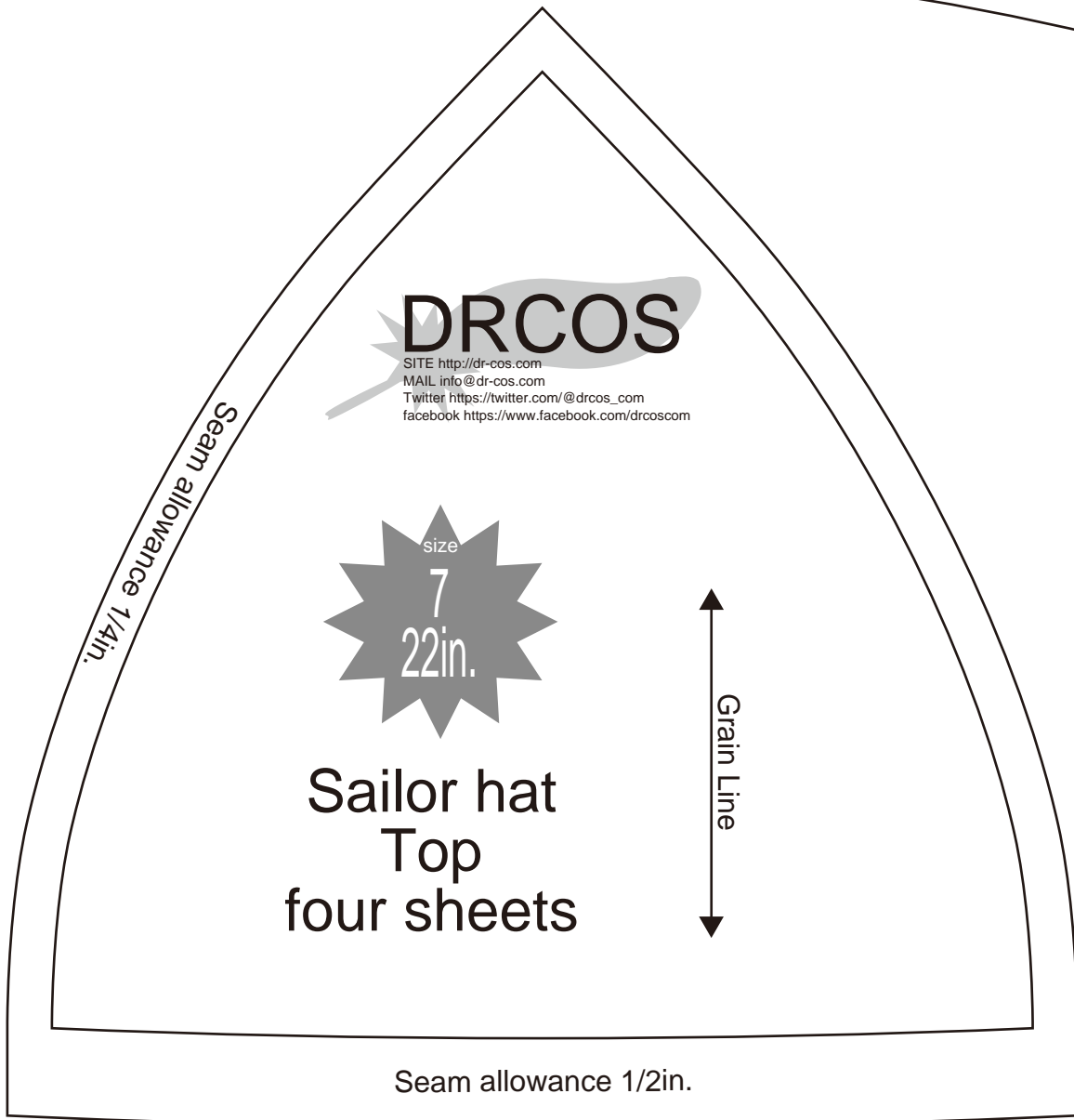
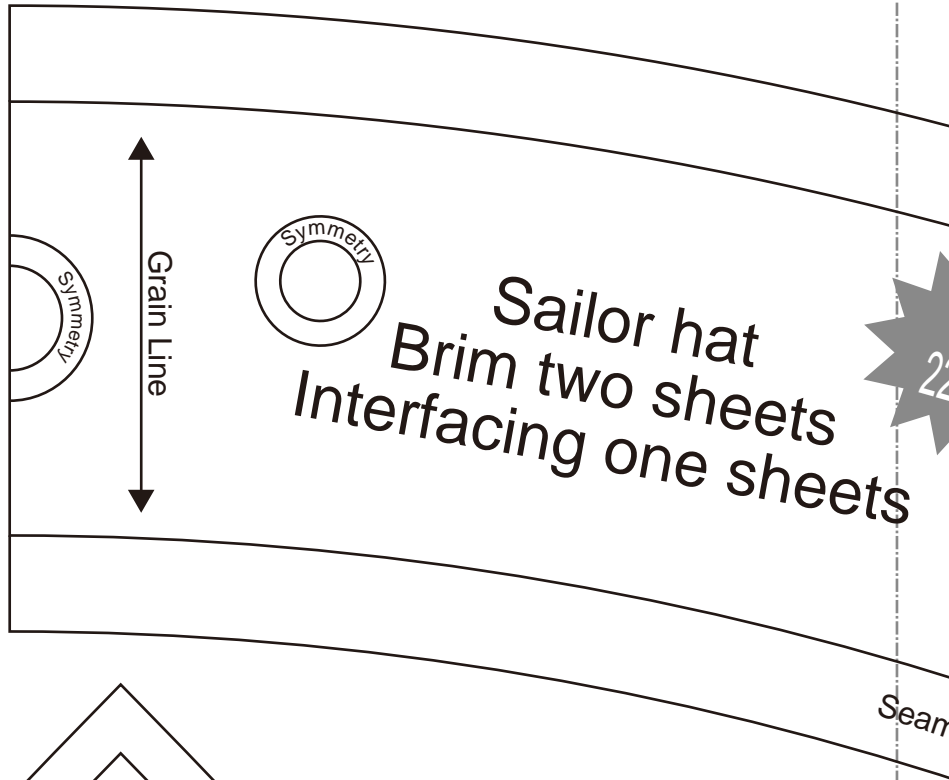


[Home](#)

[Back to Sailorhat page](#)



Bonding line AA

size
7
22in.

How to make

Sorry if I haven't made myself understood (well) in English. You know I'm poor at English.

1. "2 tops" are sewn, press seam allowances open
2. 2 of the same one is made
3. 2 semicircles is sewn, press seam allowances open
4. A interfacing is stuck on a brim.
5. Sew a "Brim" and make it annular. (two sheets)
6. "Top" and "Brim" are sewn up

Seam allowance 1/2in.



SITE <http://dr-cos.com>
 MAIL info@dr-cos.com
 Twitter <https://twitter.com/dr-cos.com>
 facebook <https://www.facebook.com/drcoscom>

ets

Bonding line Aa

Bonding line Ab

Bonding line BA