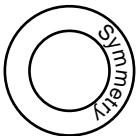


m allowance 1/2in.

Bonding line Aa



**Sailorcollarblouse
Back Body
one sheets**

Bonding line AA



DRCOS
SITE <http://dr-cos.info/> (info@dr-cos.com) <http://dr-cos.com/fp>
MAIL info@dr-cos.com
Twitter <https://twitter.com/@drcos>
facebook <https://www.facebook.com/drcoscom>


Bonding line AA

Bonding line Ba



LADIES' **IT**

size


Sailorcollarblouse
Front Body
one sheets

Bonding line AB

Bonding line AB

Bonding line Ca

Bonding line AC



Seam allow

Grain Line

Bonding line Aa

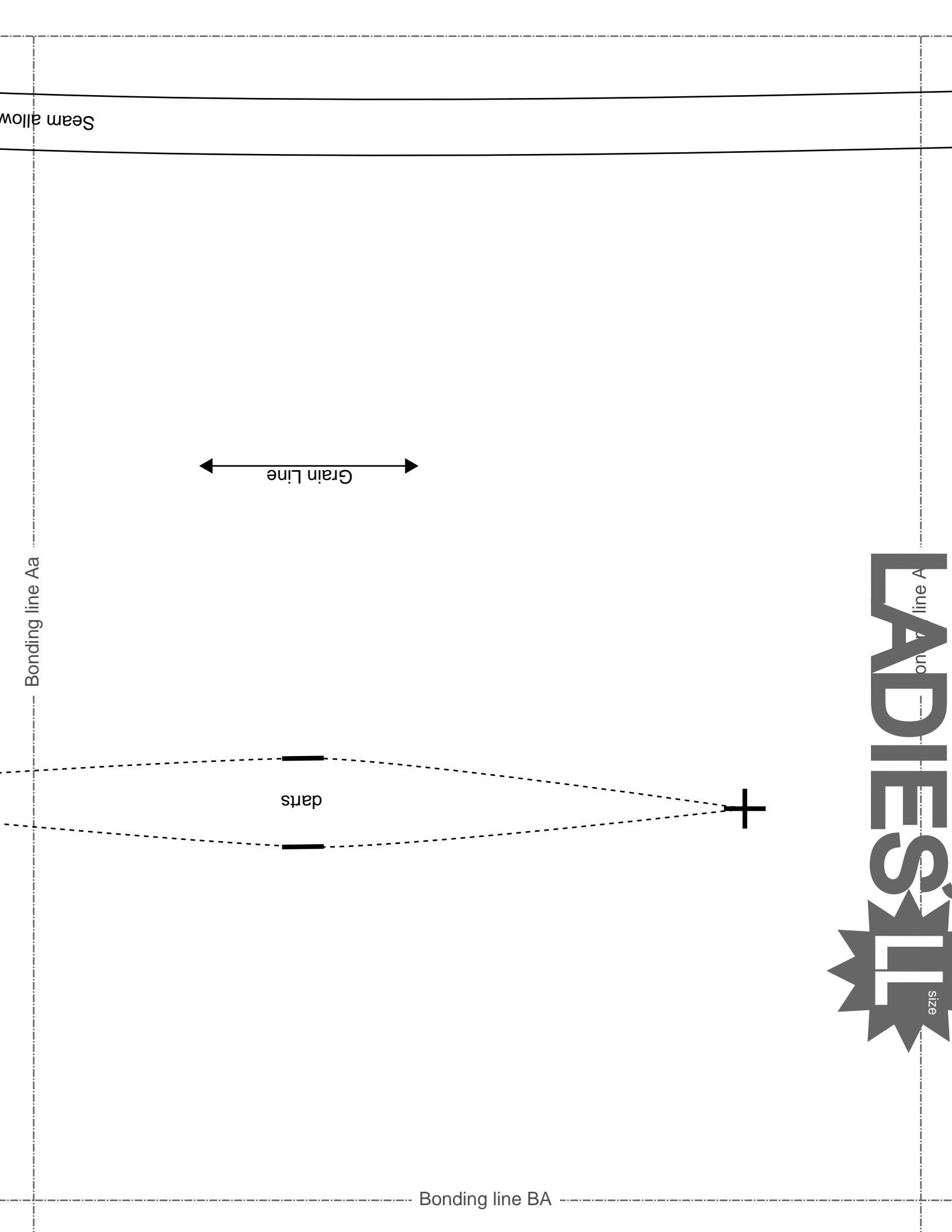
darts

Bonding line BA

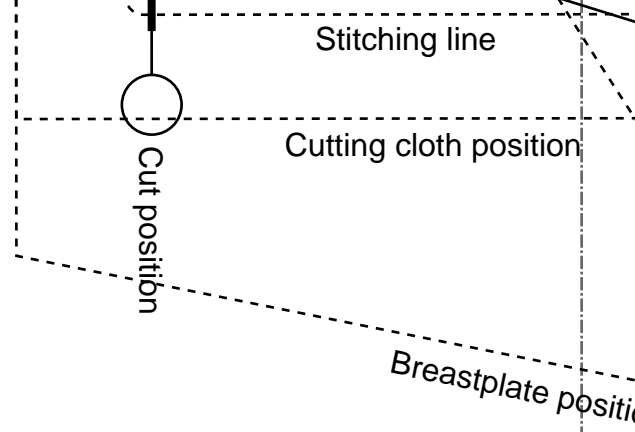
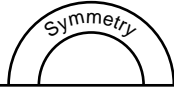
LADIES STITCH

on line A

size

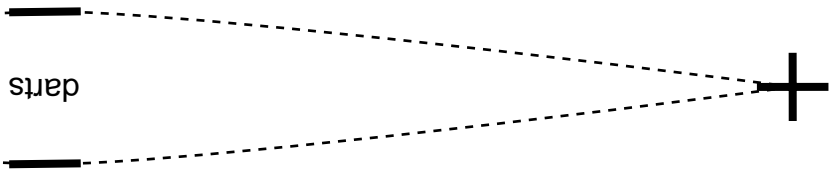


Bonding line BA

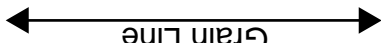


Bonding line Ba

Bonding line Bb



Grain Line



Bonding line BB

Bonding line BB

darts

Seam allowance 1/2in.

Bonding line Ca

Bonding line Cb

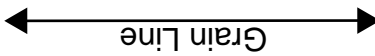


Snap button position

Seam allowance 1/2in.



SITE <http://drcos.info/en/>, <http://drcos.com/fp/>
MAIL info@drcos.com
Twitter: <https://twitter.com/@drcos.com/>
facebook: <https://www.facebook.com/drcos.com/>



Grain Line



Sailorcollarblouse
Breastplate
two sheets
Fusible interlining
one sheets

Bonding line BC

LADIES' SIZE

Bonding line A

Bonding line CA

Bonding line Ac

Baste



Bonding line CA

ition

te position

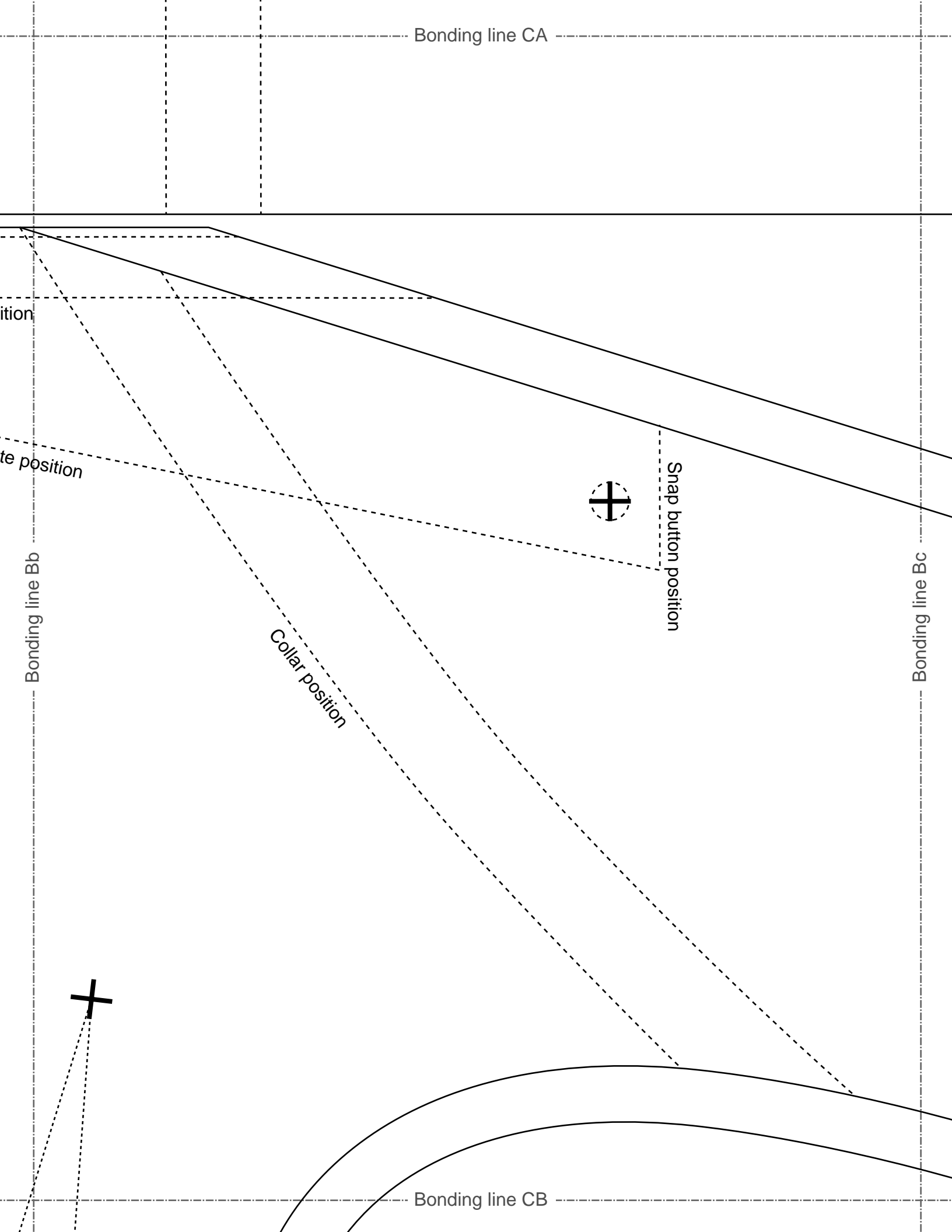
Snap button position

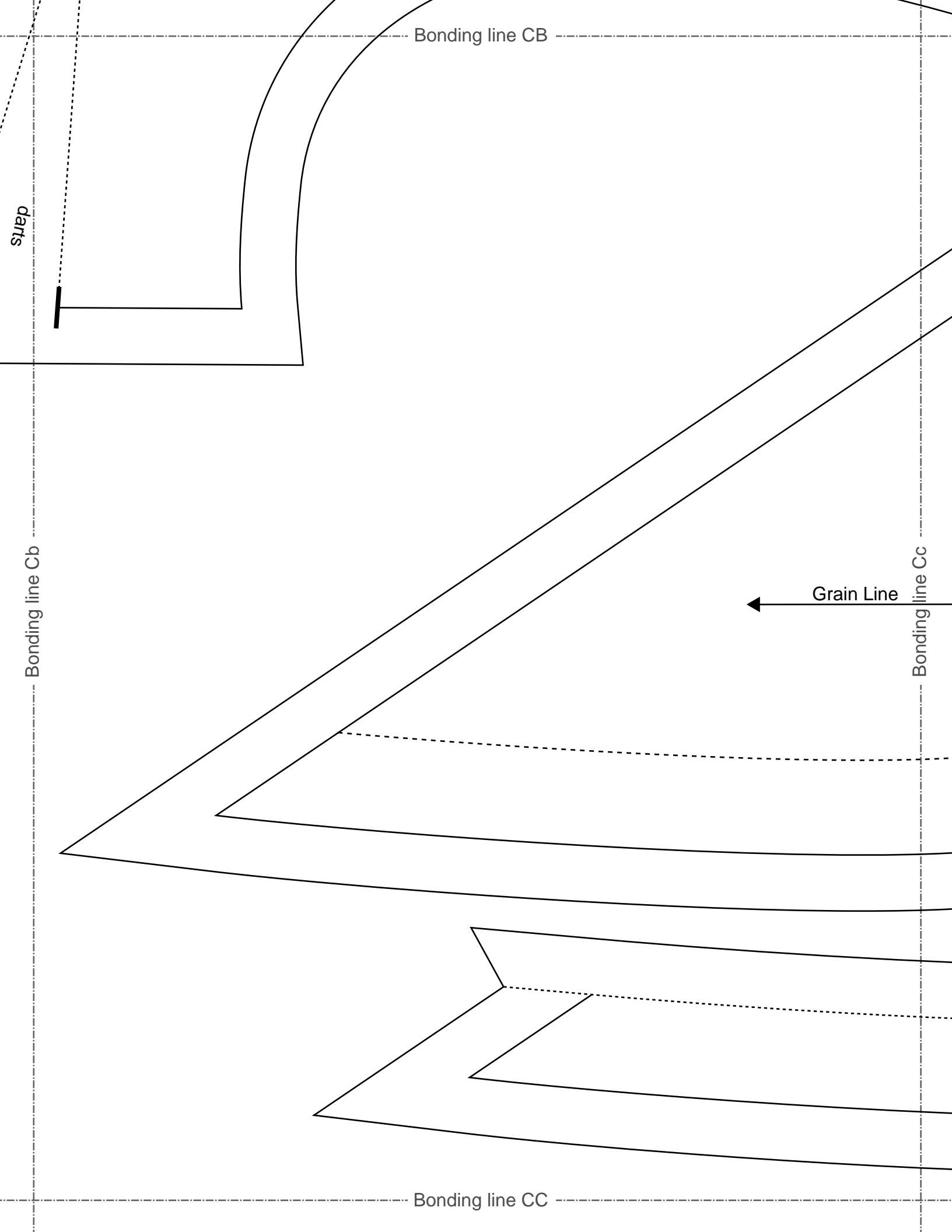
Collar position

Bonding line Bb

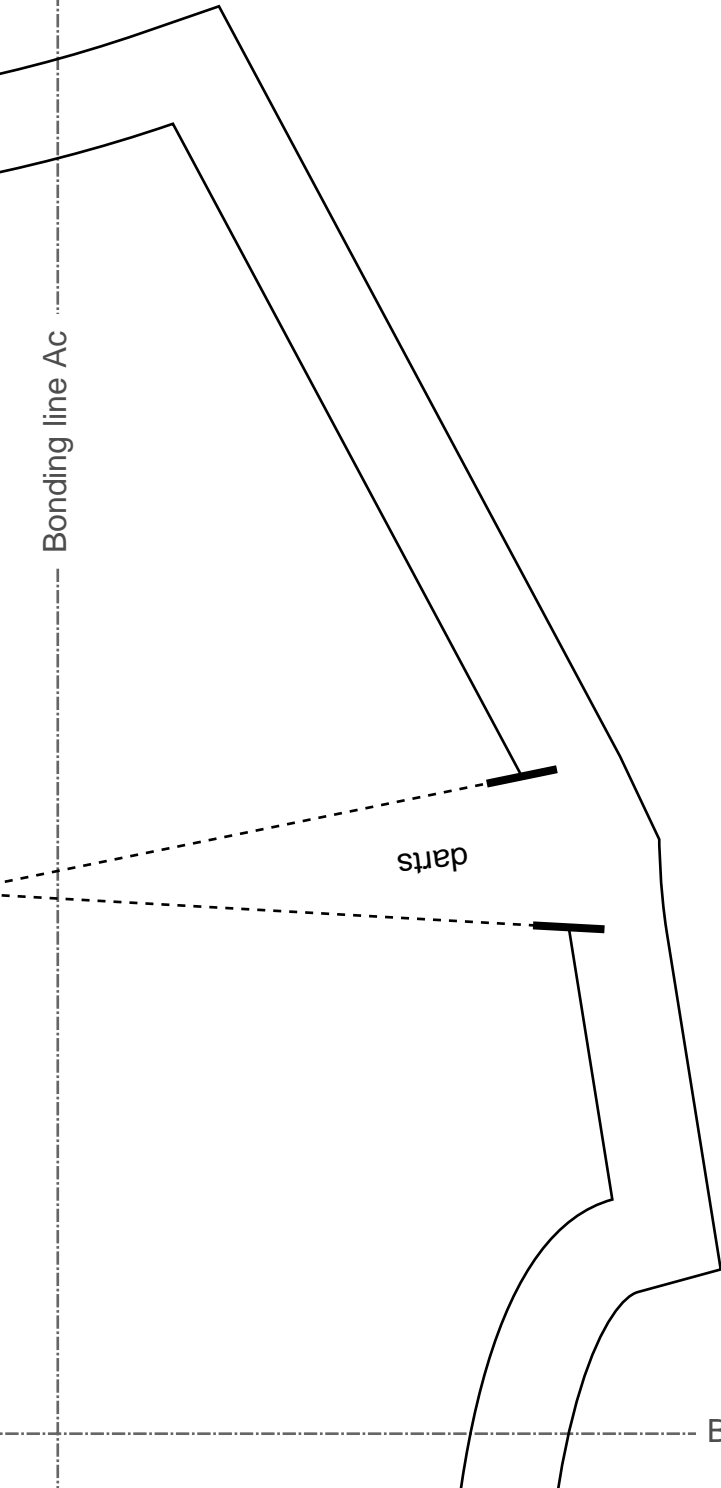
Bonding line Bc

Bonding line CB





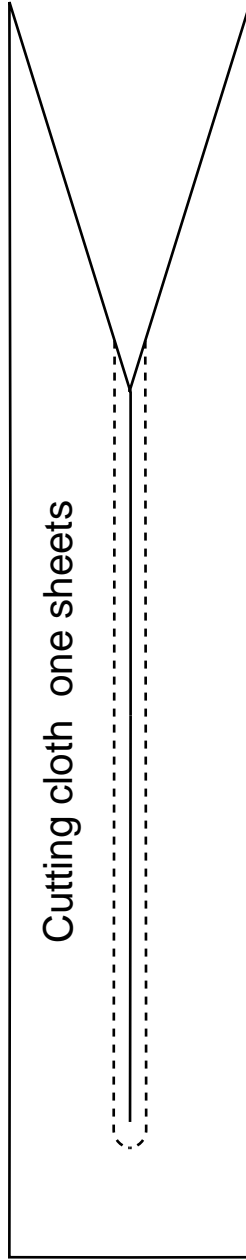
Bonding line Ac



darts

Bonding line DA

Cutting cloth one sheets



Bonding line Ad



SITE <http://drc-os.info/en>, <http://drc-os.com/ip>
MAIL info@drc-os.com
Twitter https://twitter.com/drcos_com
facebook <https://www.facebook.com/drcoscom>

Bonding line DA

Bonding line Bc

SITE <http://drcos.info/en> | <http://drcos.com/jp>
MAIL info@drcos.com
Twitter https://twitter.com/drcos_com
facebook <https://www.facebook.com/drcoscom>

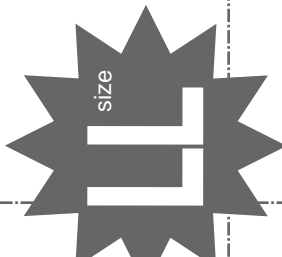
DRCOS

Bonding line Bd

DRCOS

SITE <http://drcos.info/en> | <http://drcos.com/jp>
MAIL info@drcos.com
Twitter https://twitter.com/drcos_com
facebook <https://www.facebook.com/drcoscom>

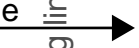
Bonding line DB



Bonding line DB

LADIES' **L**

Bonding line Cc



Bonding line Cd

Collar line position

LADIES' **L** size

Bonding line DC

LADIES' ^{size} IT

Sailor collar blouse
Sleeve
two sheets

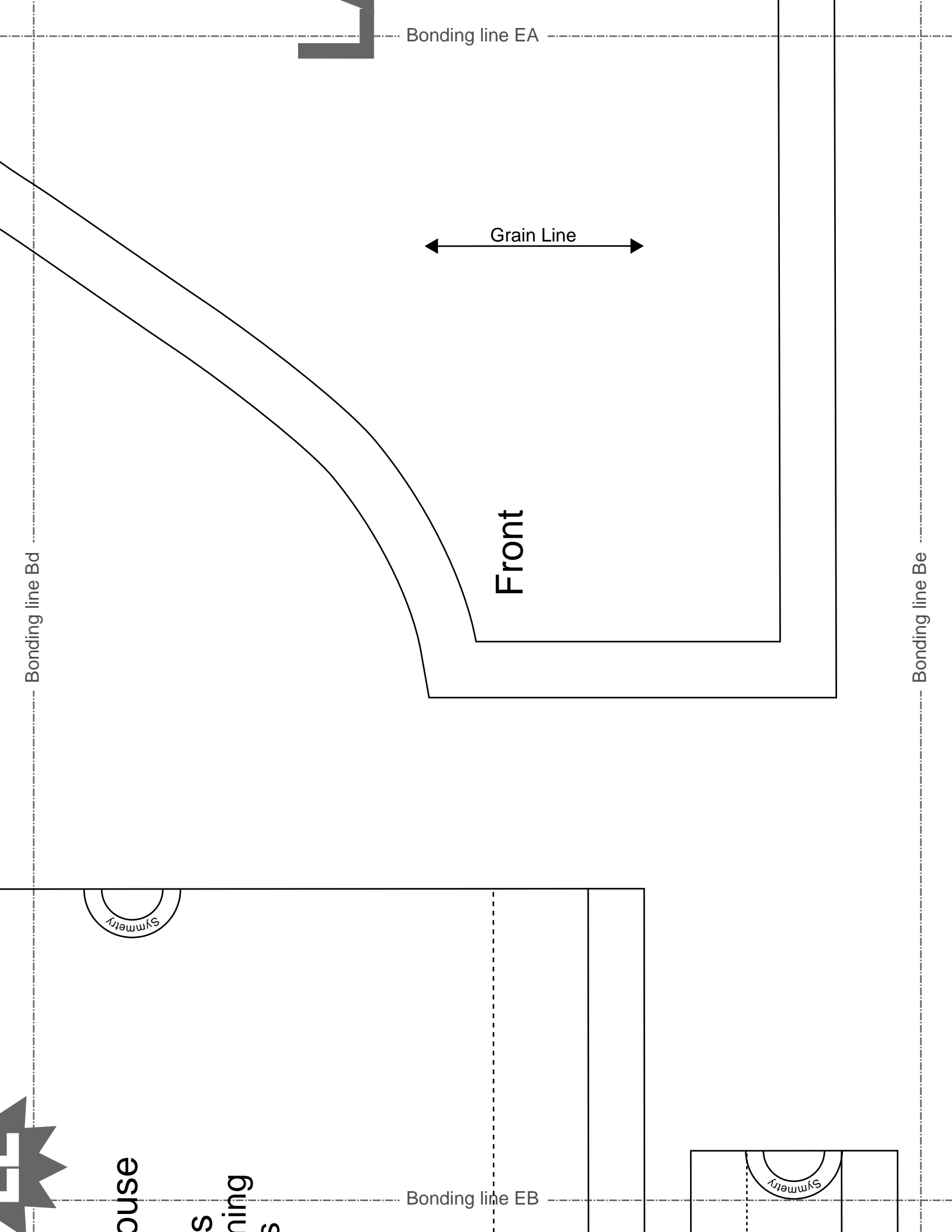
Back

Seam allowance 1/2in.

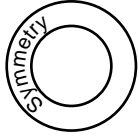
Bonding line Ad

Bonding line EA

Bonding line Ae



Sailorcollarblouse
Collar
two sheets
Fusible interlining
one sheets



Bonding line EB

Bonding line Cd

Seam allowance 1/2in.

Sailorcollarblouse
Collar line
one sheets



Bonding line Ce

Seam allowance 1/2in.

Grain Line

Cut

Bonding line EC