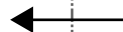


[Home](#)

[Back to Roundneckblouse page](#)

Bonding line Aa



Bonding line AA

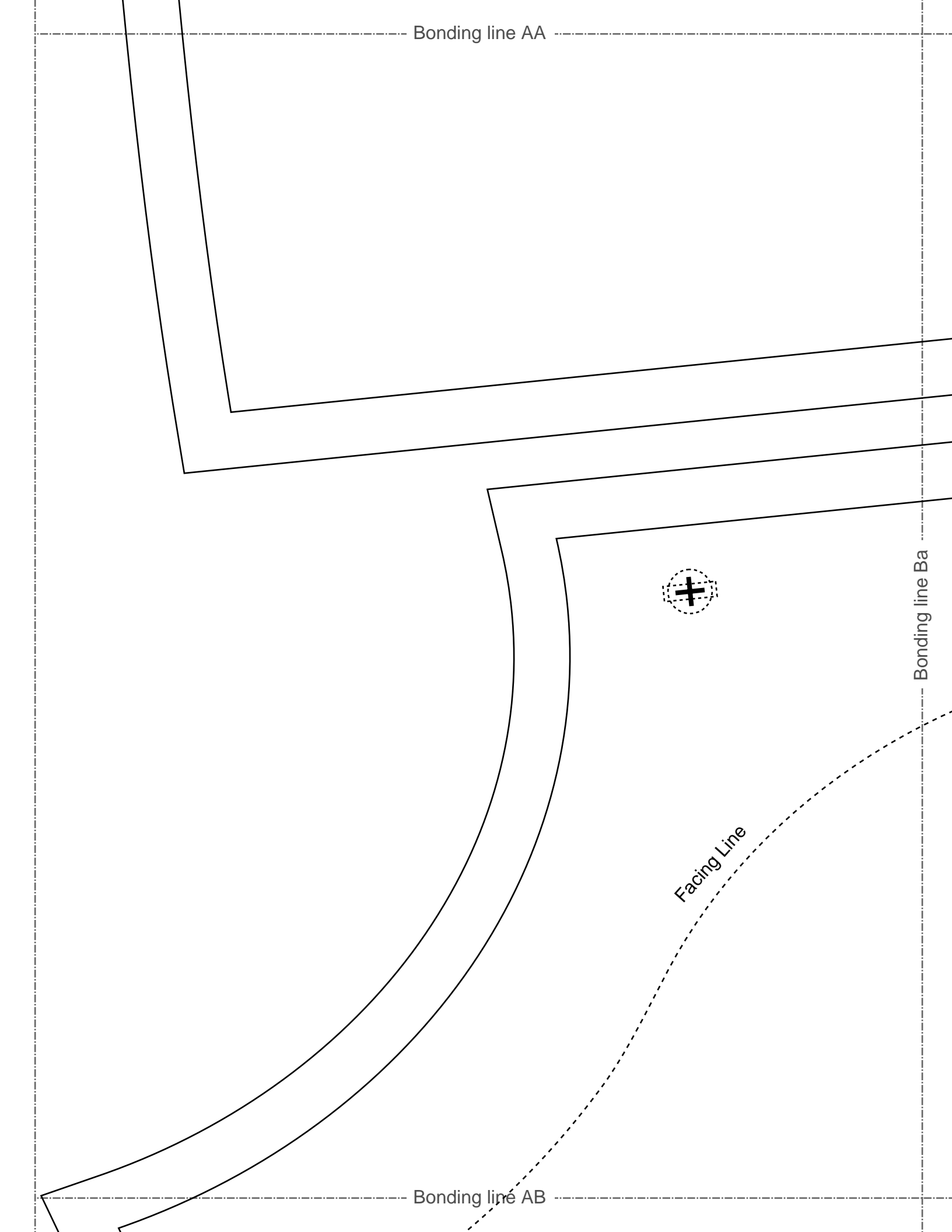
Bonding line AA

Bonding line Ba

Bonding line AB



Facing Line



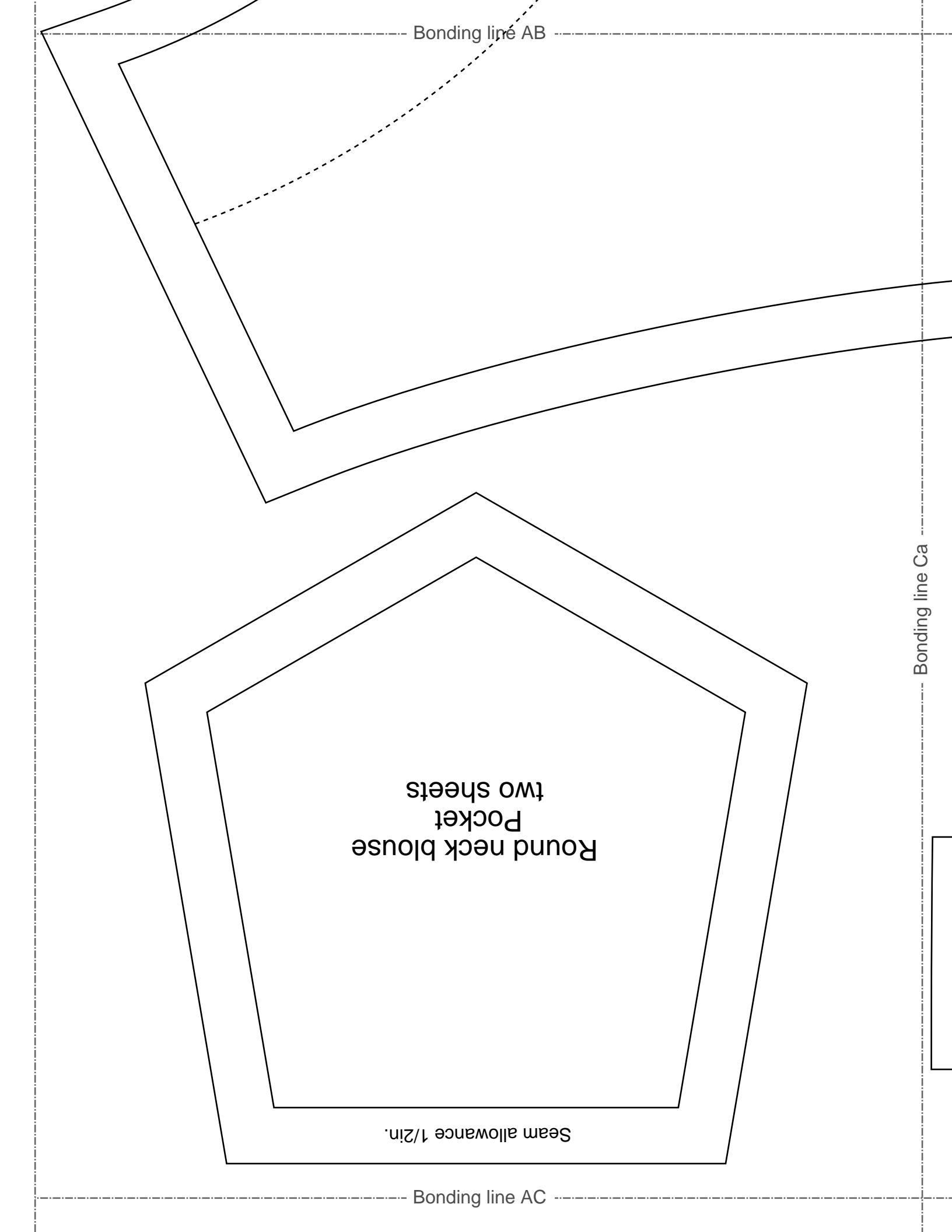
Bonding line AB

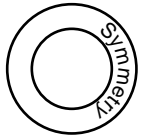
Bonding line Ca

Round neck blouse  
Pocket  
two sheets

Seam allowance 1/2in.

Bonding line AC





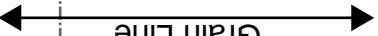
**Round neck blouse**  
**Back Body**  
**one sheets**

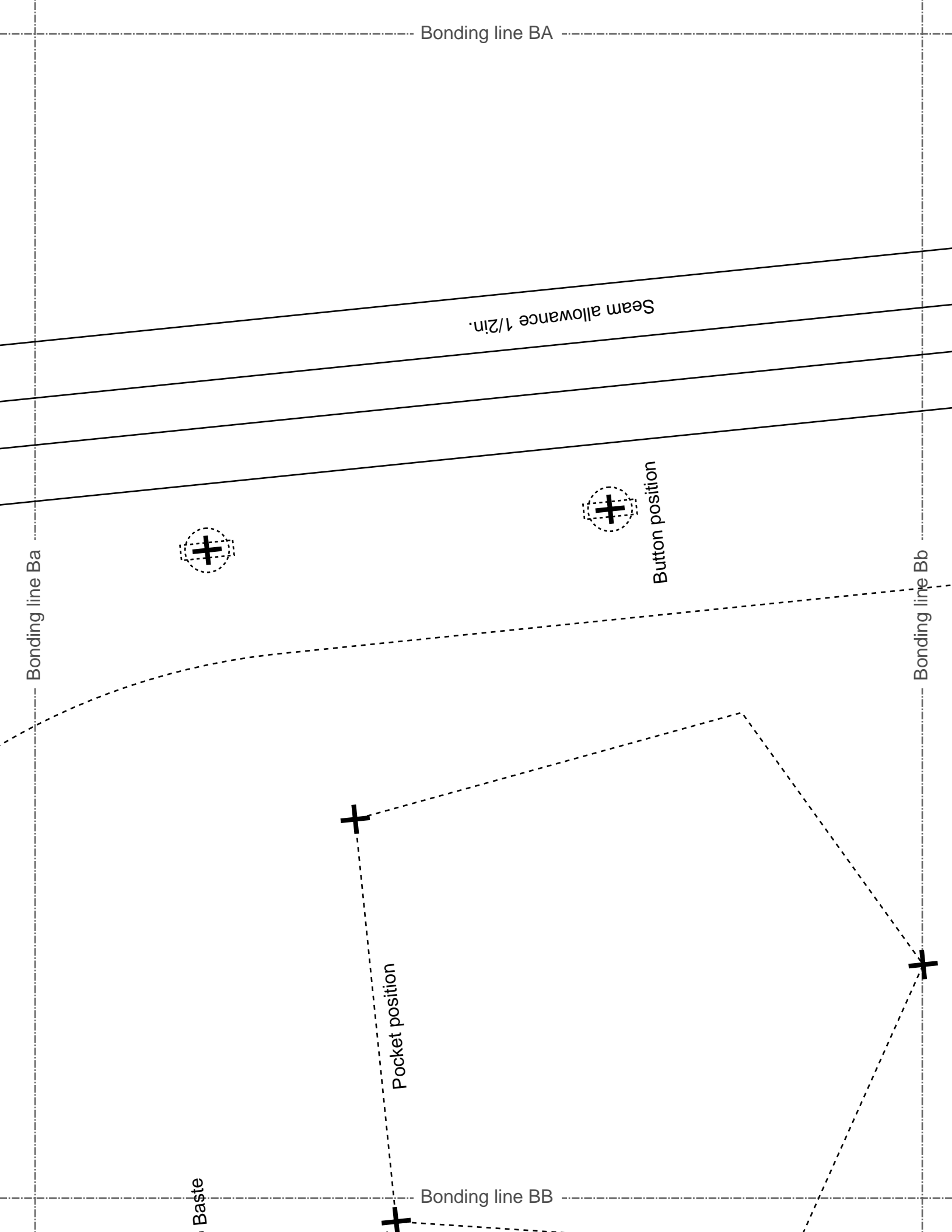
Bonding line Ab

Bonding line BA

Bonding line Aa

Grain Line





Baste

Bonding line BB

Bonding line Ca

Bonding line Cb

**DRCOS**

SITE <http://dr-cos.info/en> <http://dr-cos.com/jp>  
MAIL [info@dr-cos.com](mailto:info@dr-cos.com)  
Twitter [@drcos\\_com](https://twitter.com/@drcos_com)  
facebook <https://www.facebook.com/drcoscom>

**DRCOS**

SITE <http://dr-cos.info/en> <http://dr-cos.com/jp>  
MAIL [info@dr-cos.com](mailto:info@dr-cos.com)  
Twitter [@drcos\\_com](https://twitter.com/@drcos_com)  
facebook <https://www.facebook.com/drcoscom>

Line

Bonding line BC

Bonding line Ab

# size TIT MENS'S IT

Bonding line Ac

Bonding line CA

Bonding line CA

Bonding line Bb

Bonding line Bc

Bonding line CB



**WOMEN'S** size **IT**

**bound neck blouse**  
**Front Body**  
**Two sheets**



Bonding line CB

**MET**

Round  
Fr  
TV

Bonding line Cb

Seam allowance 1/2in.

Bonding line Cc

Grain Line



Round neck blouse  
Facing two sheets  
Fusible interlining two

Seam allowance 1/2in.

Bonding line CC

Bonding line Ac

Bonding line Ad

Facing Line



**DRCOS**  
SITE <http://dr-cos.info/en> <http://dr-cos.com/jp>  
MAIL [info@dr-cos.com](mailto:info@dr-cos.com)  
TWITTER [@drcos\\_com](https://twitter.com/@drcos_com)  
FACEBOOK <https://www.facebook.com/m/drcoscom>

Bonding line DA

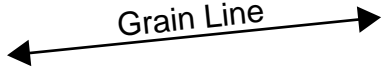
Bonding line DA

Bonding line Bc

Bonding line Bd

Bonding line DB

Grain Line



Bonding line DB

Bonding line Cc

Bonding line Cd

blouse  
sheets  
two sheets

**MEN'S**

Bonding line DC

Bonding line Ad

Bonding line Ae

Bonding line EA

DRCOS  
http://dr-cos.info/en

**DRCOS**  
http://dr-cos.info/en http://dr-cos.com/jp  
info@dr-cos.com  
Twitter: https://twitter.com/dr-cos\_com  
Facebook: https://www.facebook.com/dr-cos.com

Bonding line Bd

Bonding line EA

Seam allowance 1/2in.

**MEN'S**  size

Round neck blouse  
Facing two sheets  
Fusible interlining two sheets

**DRCOS**  
SITE: <http://drcos.info/>  
MAIL: [info@drcos.com](mailto:info@drcos.com)  
Twitter: <https://twitter.com/drcos>  
facebook: <https://www.facebook.com/drcos>

**DRC**  
SITE: <http://drcos.info/>  
MAIL: [info@drcos.com](mailto:info@drcos.com)  
Twitter: <https://twitter.com/drcos>  
facebook: <https://www.facebook.com/drcos>

Bonding line EB

Bonding line Be



Bonding line EB

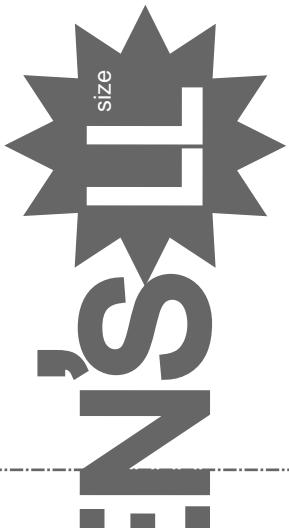
Grain Line

Bonding line Cd

Bonding line Ce



Bonding line EC



and neck blouse  
Sleeve  
no sheets

Bonding line FA

Back

hem allowance 1/2in.

Bonding line Ae

Bonding line Af



# MEN

Round neck  
Sleeve  
two pieces

Bonding line FA

Seam allow

Grain Line

Front

Bonding line Bc

Bonding line Bf

Bonding line FB

