

Seam allowance 1/2in.

Pumpkin Pants Facing
one sheets
Fusible interlining
one sheets

Grain Line



Bonding line AA

Extension portion

Grain Line

Bonding line Aa



Bonding line AA



Zip ends

Bonding line Ba

DRCOS

SITE [http://dr-cos.info\(en\)](http://dr-cos.info(en)) [http://dr-cos.com\(jp\)](http://dr-cos.com(jp))
MAIL info@dr-cos.com
Twitter https://twitter.com/@drcos_com
facebook <https://www.facebook.com/drcoscom>



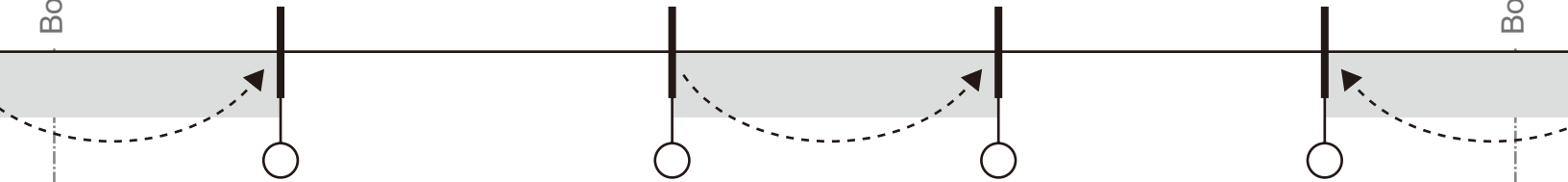
Bonding line AB

Seam allowance 1/2in.

LADIES'  size S

Bonding line Aa

Bonding line Ab



Bonding line BA

Bonding line BA

LADIES'

Pumpkin Pants
Body
two sheets



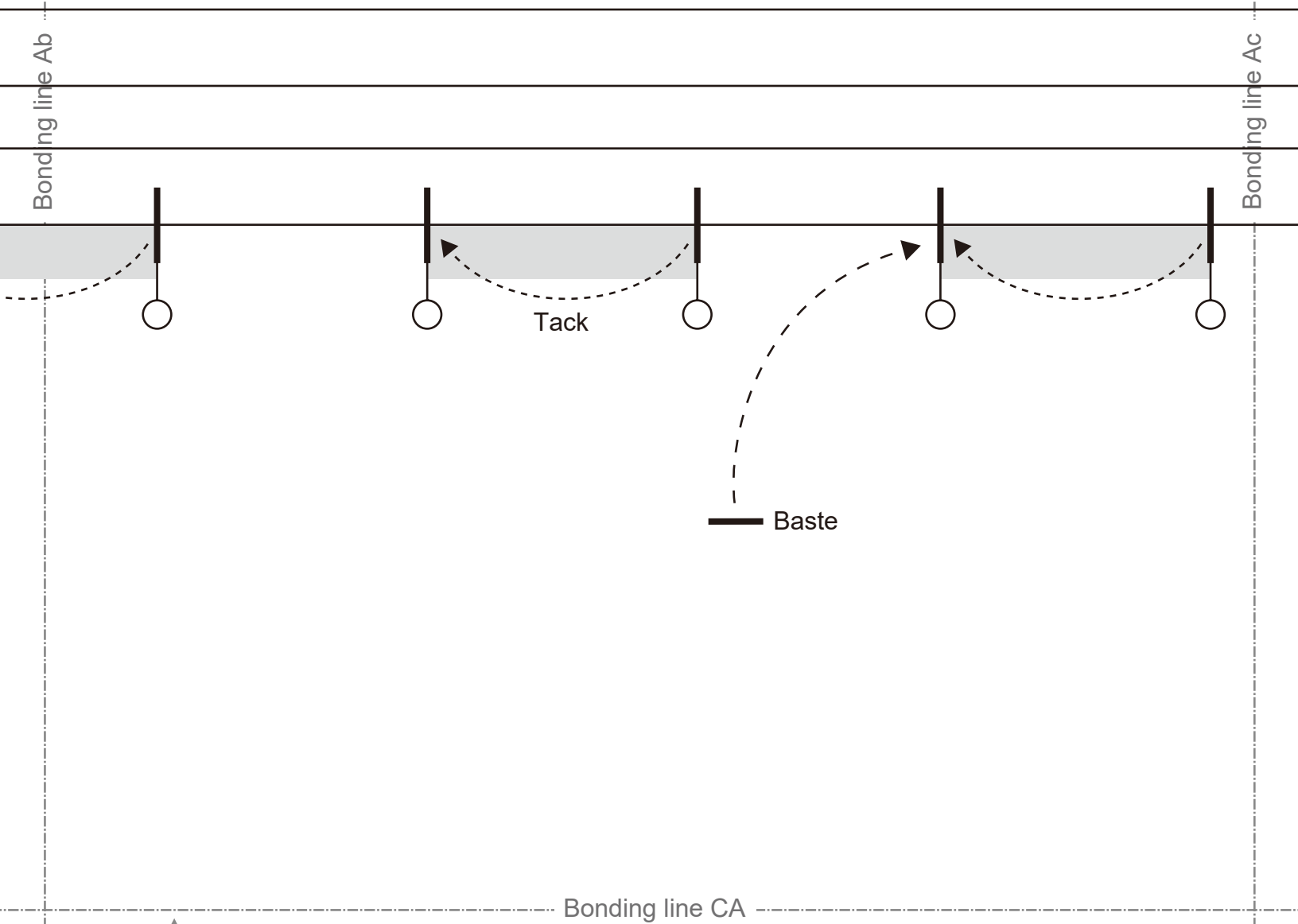
Bonding line Ba

Bonding line Bb

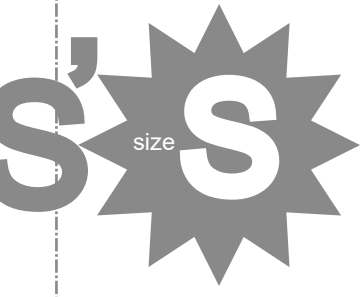
Gather

Bonding line BB

Pumpkin Pants
Belt
one sheets
Fusible interlining
one sheets



Bonding line CA



Pants

ets

Bonding line Bb

Bonding line Bc

Bonding line CB

Bonding line Ac

DRCOS

SITE [http://dr-cos.info\(en\)](http://dr-cos.info(en)) [http://dr-cos.com\(jp\)](http://dr-cos.com(jp))
MAIL info@dr-cos.com
Twitter https://twitter.com/drcos_com
facebook <https://www.facebook.com/drcoscom>

Seam allowance 1/2in.

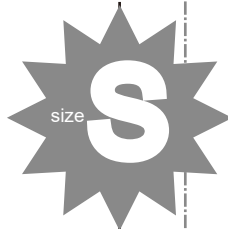
Bonding line DA

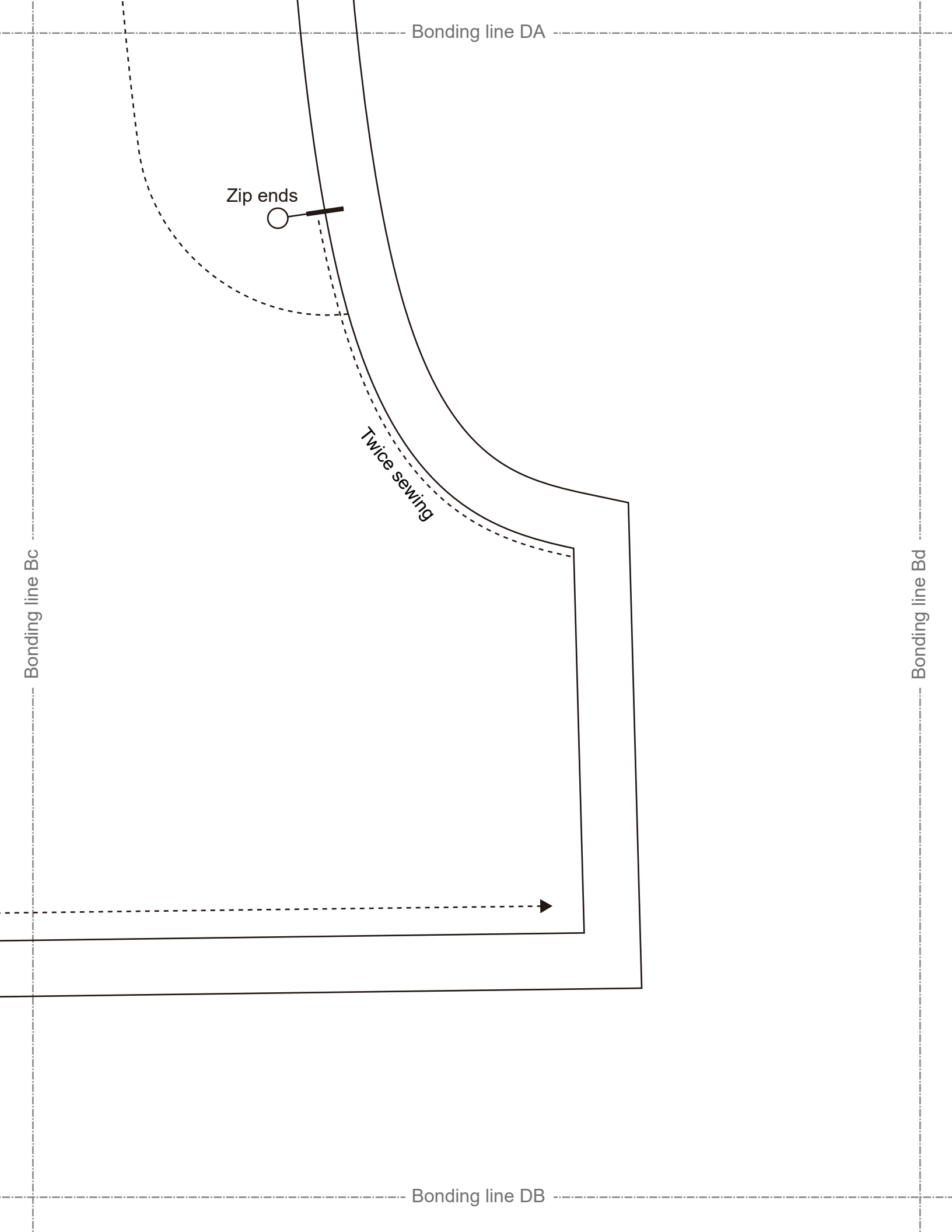
Seam allowance 1/2

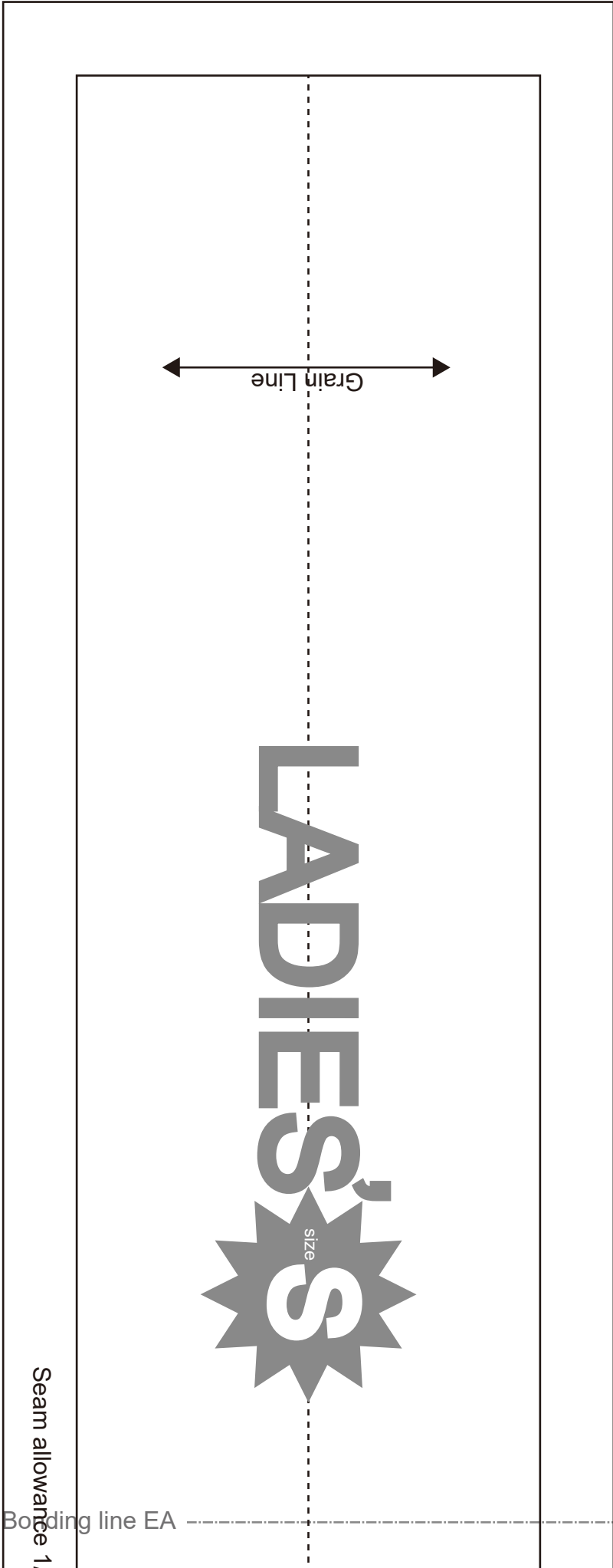
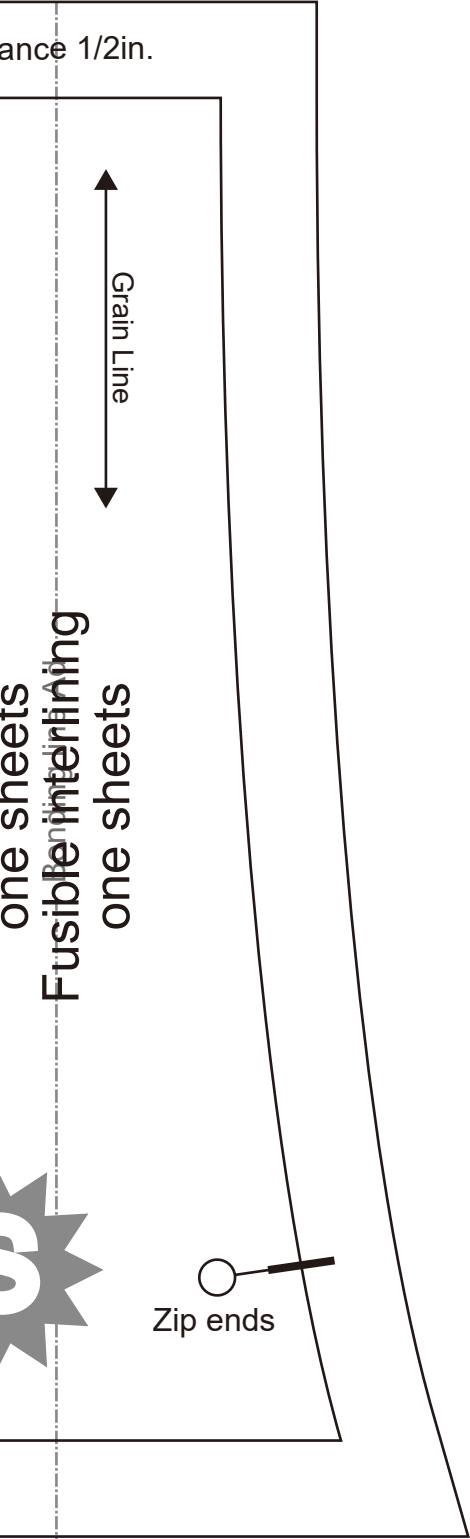
SITE [http://dr-cos.info\(en\)](http://dr-cos.info(en)) [http://dr-cos.com\(jp\)](http://dr-cos.com(jp))
MAIL info@dr-cos.com
Twitter https://twitter.com/drcos_com
facebook <https://www.facebook.com/drcoscom>

DRCOS

Pumpkin Pants
Extension parts
one sheets
Fusible interfacing
one sheets







Bonding line Be

Pumpkin Pants
Hem cuffs
two sheets



Bonding line EB

width 1/2in.

Bonding line EA

Bonding line Bd