

Extension
portion

Grain Line

Bonding line Aa



Bonding line AA

Bonding line AA

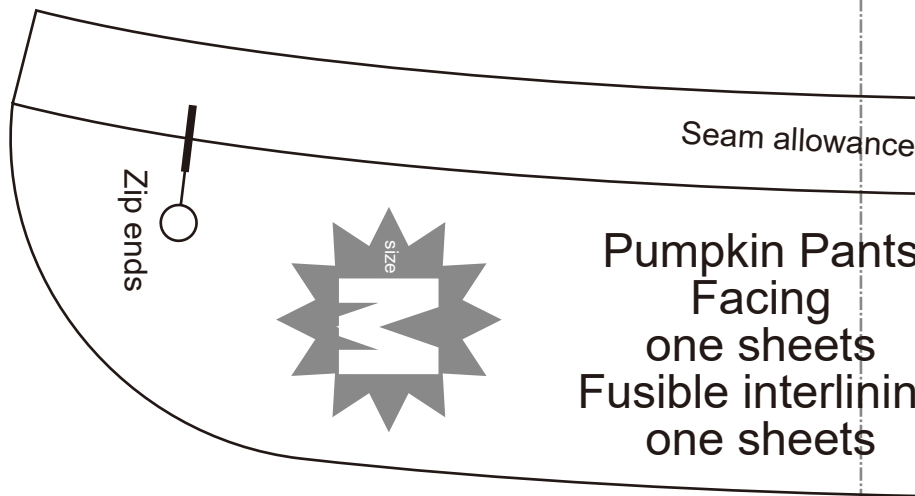
Bonding line Ba

DRCOS

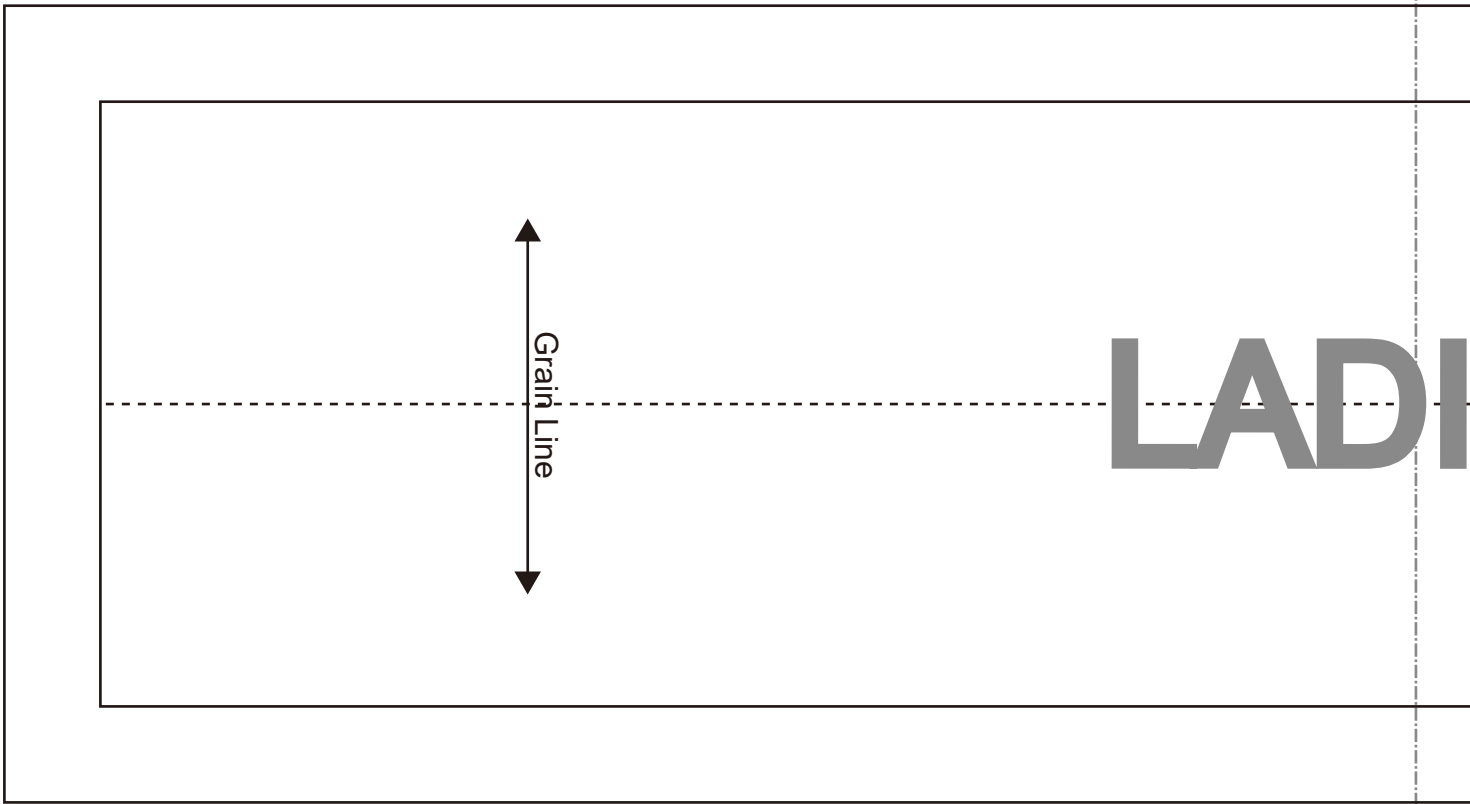
SITE <http://dr-cos.info/en> <http://dr-cos.com/jp>
MAIL info@dr-cos.com
Twitter https://twitter.com/drcos_com
facebook <https://www.facebook.com/drcoscom>

Bonding line AB

Bonding line AB



Bonding line Ca



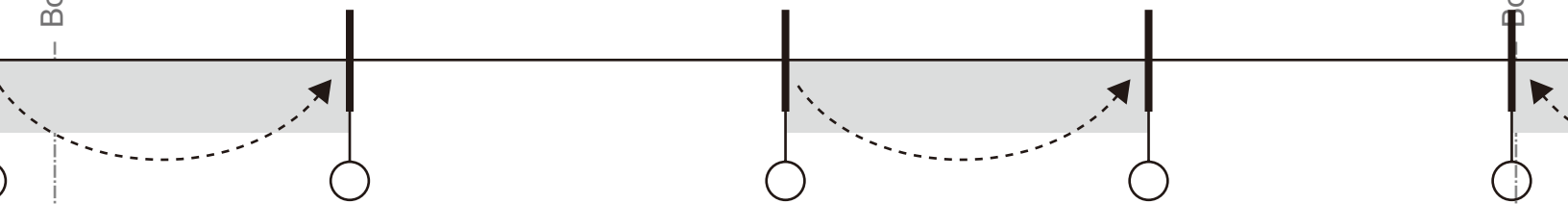
Bonding line AC

Seam allowance 1/2in.

LADIES' size M

Bonding line Aa

Bonding line Ab



Bonding line BA

Bonding line BA

Bonding line Ba

Bonding line Bb



Grain Line

Gather

Bonding line BB

Bonding line BB

allowance 1/2in.

Pants
g
eets
erlining
eets

← Grain Line →

DRCOS

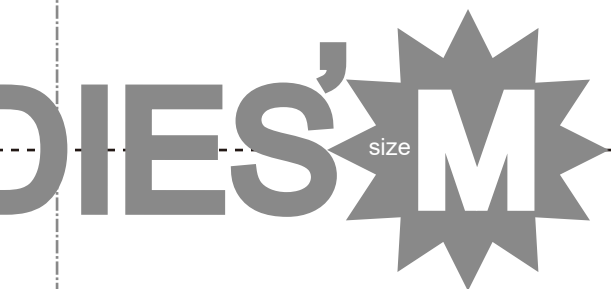
SITE [http://dr-cos.info\(en\)](http://dr-cos.info(en)) [http://dr-cos.com\(jp\)](http://dr-cos.com(jp))
MAIL info@dr-cos.com
Twitter [@drcos_com](https://twitter.com/@drcos_com)
facebook <https://www.facebook.com/drcoscom>

Bonding line Ca

Seam allowance 1/2in.



Bonding line Cb



Pumpk
Hem
two s

Seam allowance 1/2in.

Bonding line BC

LADIES' size M

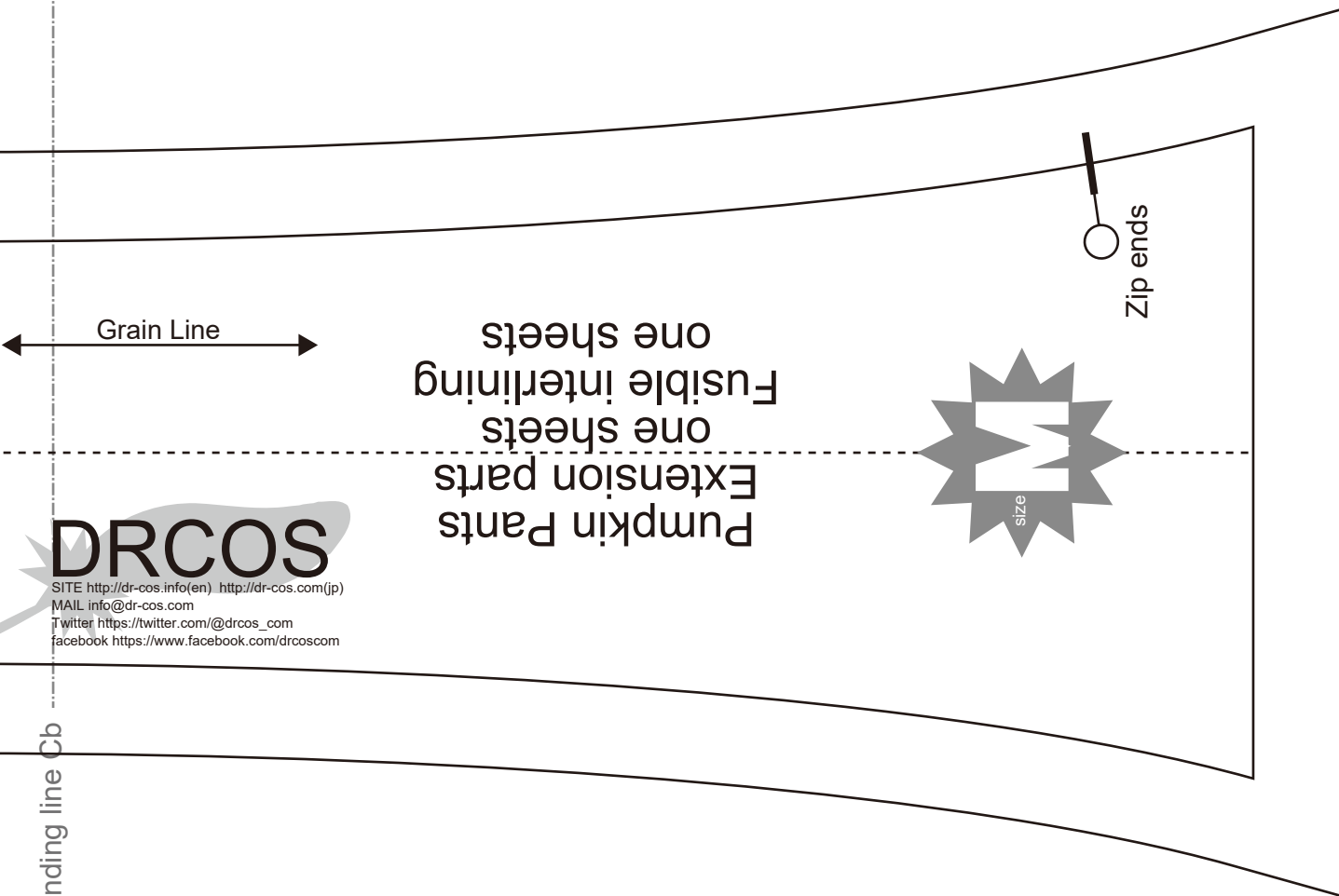
Pumpkin Pants
Body
two sheets

Bonding line Bb

Bonding line Bc

Gather

Bonding line CB



Bonding line Cb

Bonding line Cc

Pumpkin Pants
Hem cuffs
two sheets

DRCOS
 SITE [http://dr-cos.info\(en\)](http://dr-cos.info(en)) [http://dr-cos.com\(jp\)](http://dr-cos.com(jp))
 MAIL info@dr-cos.com
 Twitter https://twitter.com/@drcos_com
 facebook <https://www.facebook.com/drcoscom>

Bonding line CC

DRCOS

SITE [http://dr-cos.info\(en\)](http://dr-cos.info(en)) [http://dr-cos.com\(jp\)](http://dr-cos.com(jp))
MAIL info@dr-cos.com
Twitter https://twitter.com/@drcos_com
facebook <https://www.facebook.com/drcoscom>

Bonding line Ac

Bonding line Ad

Seam allowance 1/2in.

Bonding line DA

