


**MEN'S** 

**Princess Dress**  
Back Facing two sheets  
Fusible interlining two sheets

Seam allowance 1/2in.

notch mark 



**Princess Dress**  
Front Facing  
Fusible interlining two sheets

Grain Line 

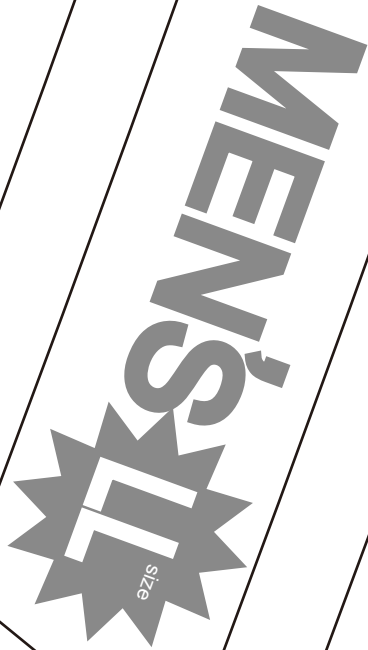
Bonding line Aa

Bonding line Aa

Bonding line A

Princess Dress 2  
Facing one sheets  
Lining one sheets

Seam allowance 1/2in.



Spare cloth

Grain Line

Bonding line Ba

Bonding line AB

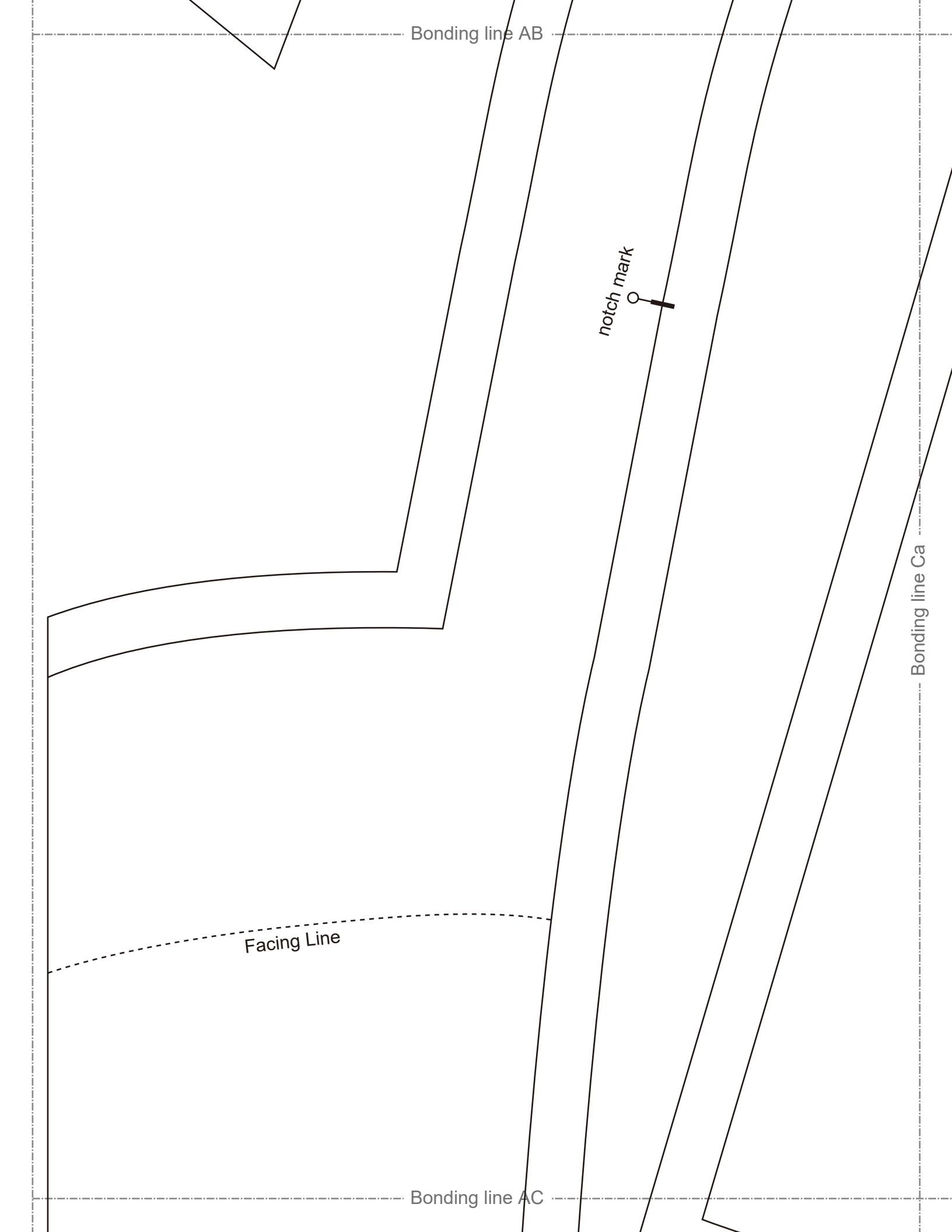
Bonding line AB

notch mark

Facing Line

Bonding line AC

Bonding line Ca



Bonding line AC

Bonding line AD

Bonding line Da



Grain Line

Bonding line AD



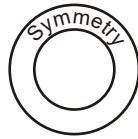
Bonding line Ea

**MEN'S** **LL** size

Bonding line AE

Bonding line AE

# Princess Dress 2

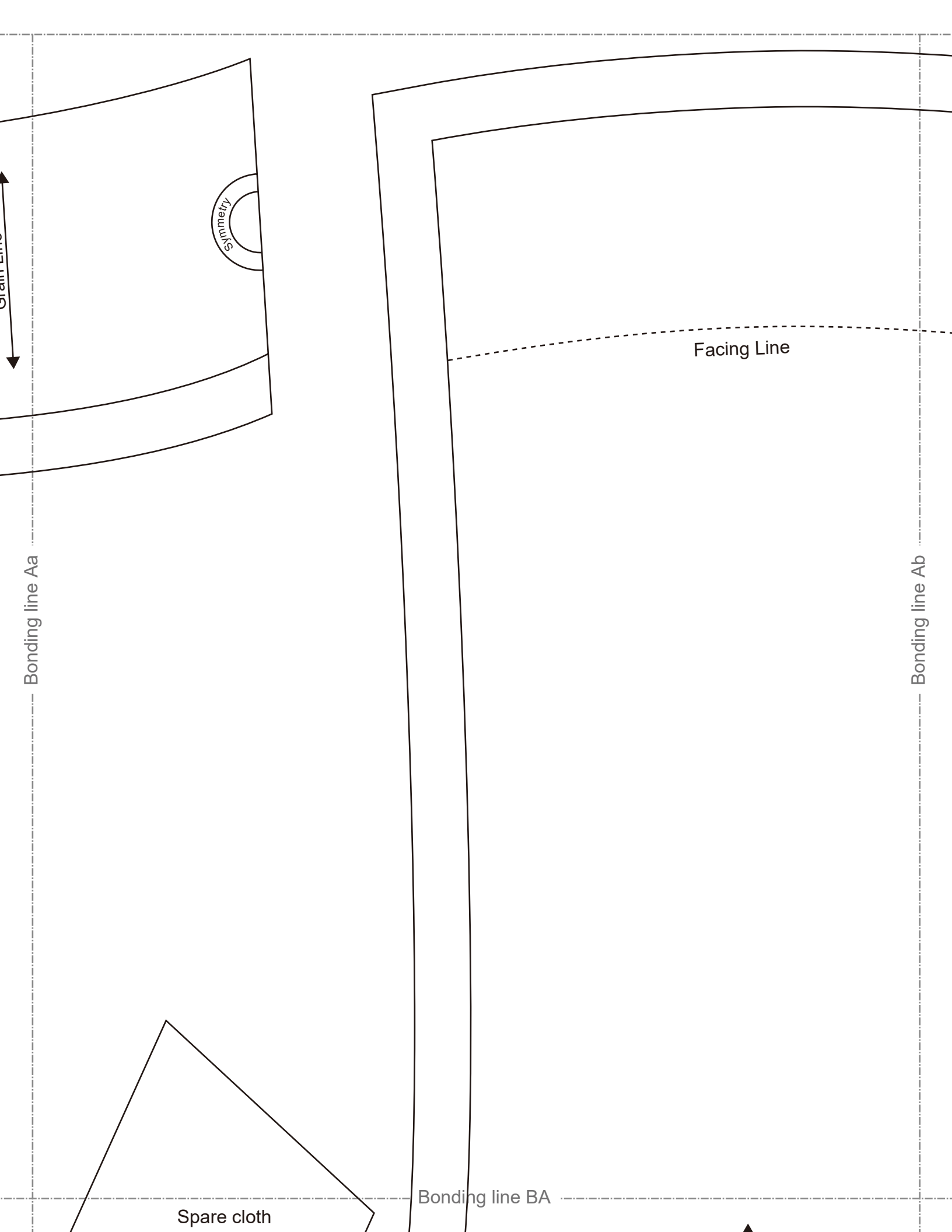


Front body  
one sheets

Bonding line Fa

Seam allowance 1/2in.

Bonding line AF



Grain Line

Symmetry

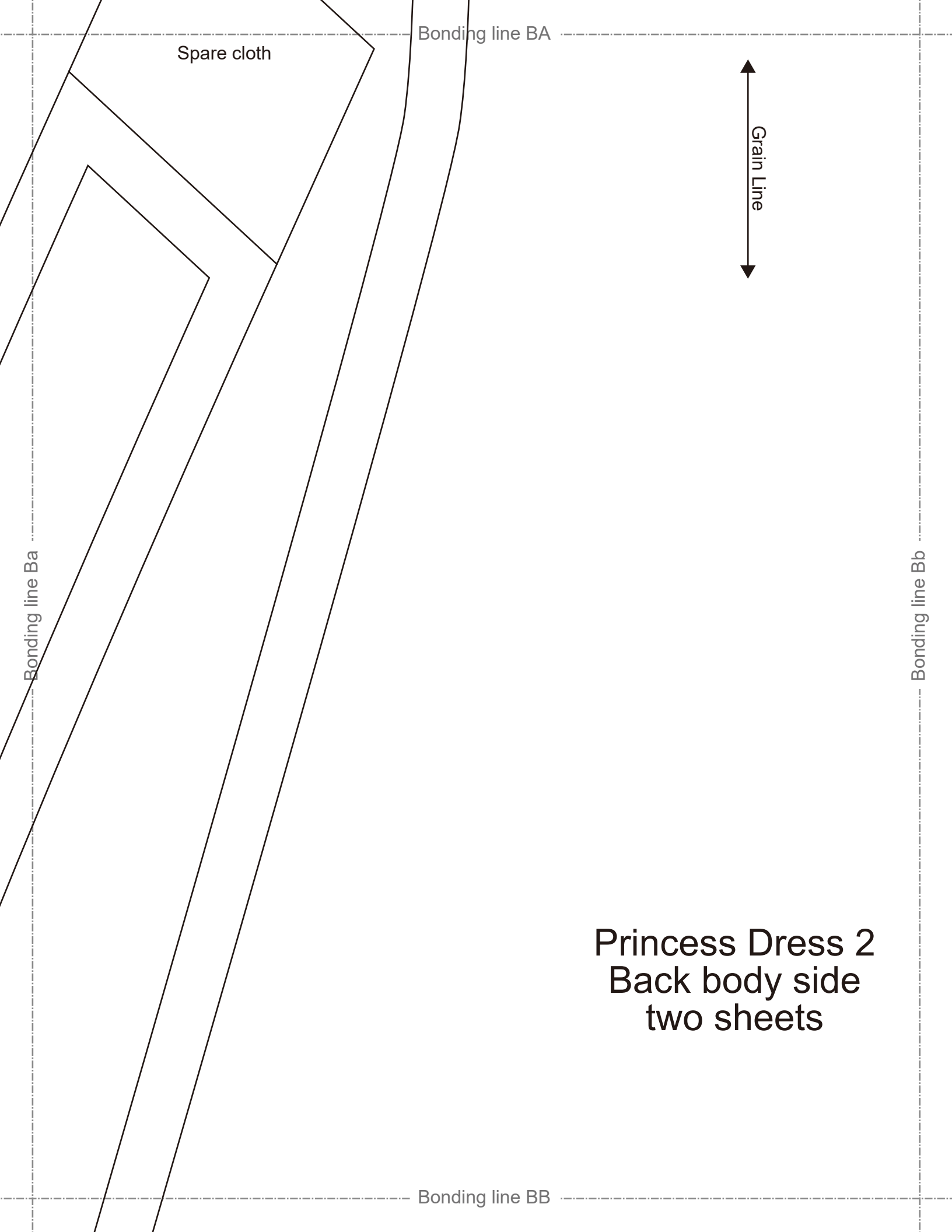
Bonding line Aa

Facing Line

Bonding line Ab

Spare cloth

Bonding line BA



Spare cloth

Bonding line BA

Grain Line

Bonding line Ba

Bonding line Bb

Bonding line BB

Princess Dress 2  
Back body side  
two sheets



Bonding line BB

Bonding line Ca

MEN'S **LL** size

Bonding line Cb

Bonding line BC

Bonding line BC

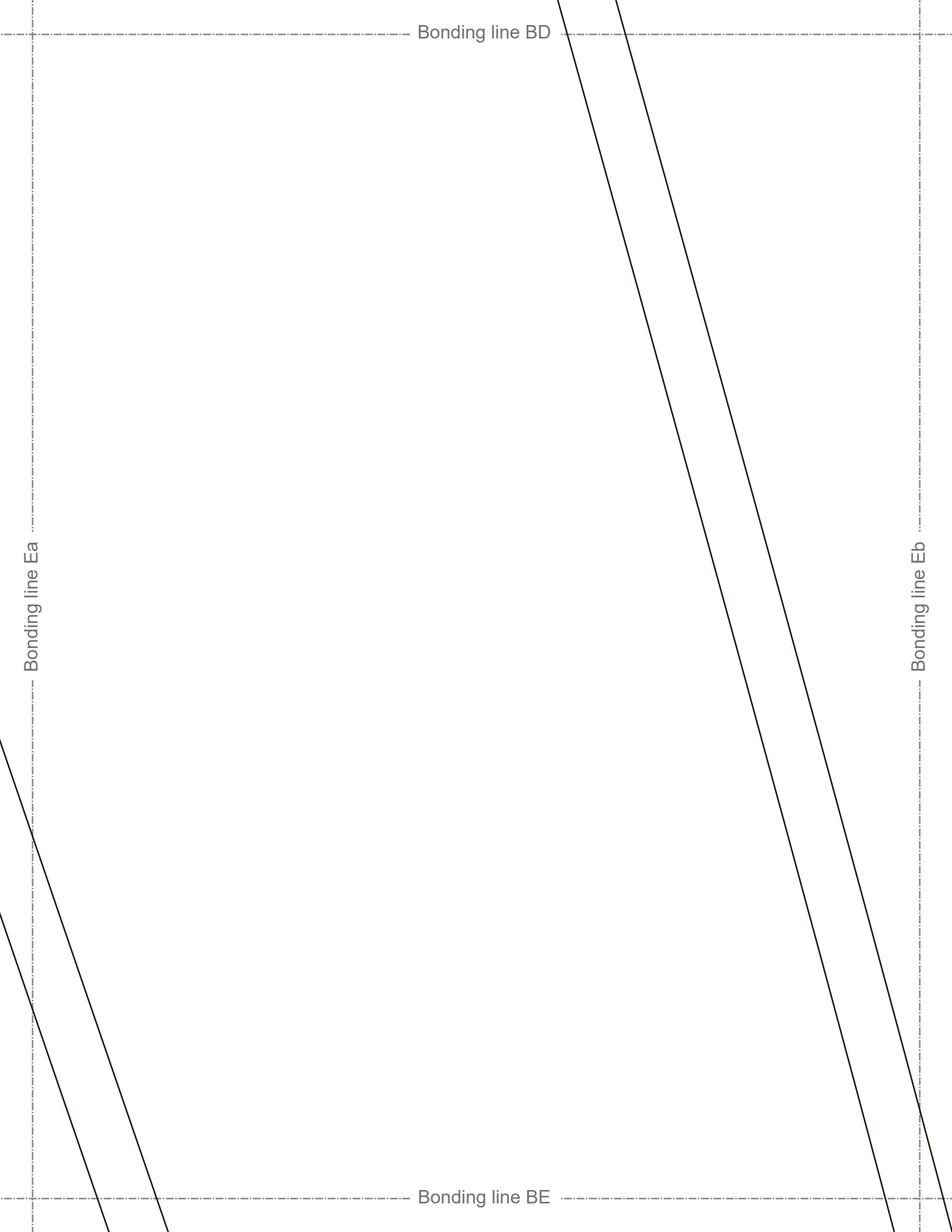
Seam allowance 1/2in.

Bonding line Da

Bonding line Db

**DRCOS**  
SITE <http://dr-cos.info/en> [http://dr-cos.com\(dp\)](http://dr-cos.com(dp))  
MAIL [info@dr-cos.com](mailto:info@dr-cos.com)  
Twitter [https://twitter.com/drcos\\_com](https://twitter.com/drcos_com)  
facebook <https://www.facebook.com/drcoscom>

Bonding line BD



Bonding line BE

Bonding line Fa

Bonding line Fb

**DRCOS**

SITE <http://dr-cos.info/en> <http://dr-cos.com/jp>

MAIL [info@dr-cos.com](mailto:info@dr-cos.com)

Twitter [https://twitter.com/@drcos\\_com](https://twitter.com/@drcos_com)

facebook <https://www.facebook.com/drcoscom>

Bonding line BF

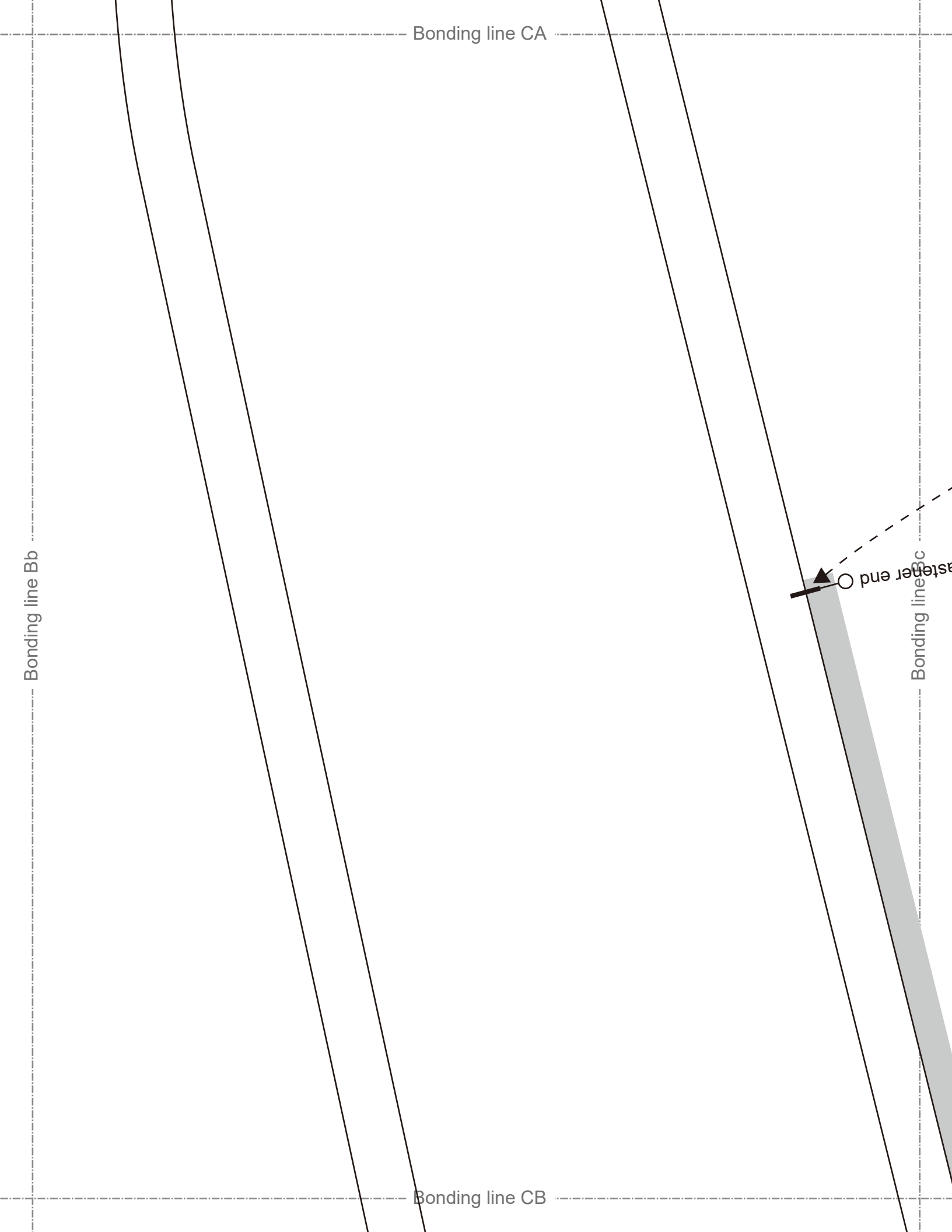
Bonding line Ab

Bonding line Ac

Bonding line CA

**DRCOS**  
SITE [http://dr-cos.info\(en\)](http://dr-cos.info/en) [http://dr-cos.com\(fp\)](http://dr-cos.com(fp))  
MAIL [info@dr-cos.com](mailto:info@dr-cos.com)  
Twitter <https://twitter.com/dr-cos.com>  
Facebook <https://www.facebook.com/drcoscom>





Bonding line CA

Bonding line CB

Bonding line Bb

Bonding line Bc

aster end O

Bonding line CB



size

Bonding line Cb

Bonding line Cc

**DRCOS**

SITE <http://dr-cos.info/en> <http://dr-cos.com/jp>

MAIL [info@dr-cos.com](mailto:info@dr-cos.com)

Twitter [https://twitter.com/@drcos\\_com](https://twitter.com/@drcos_com)

facebook <https://www.facebook.com/drcoscom>

Seam allowance 1/2in.

Bonding line Db

Bonding line Dc

Princess Dress 2  
Front body side  
two sheets

Bonding line CD



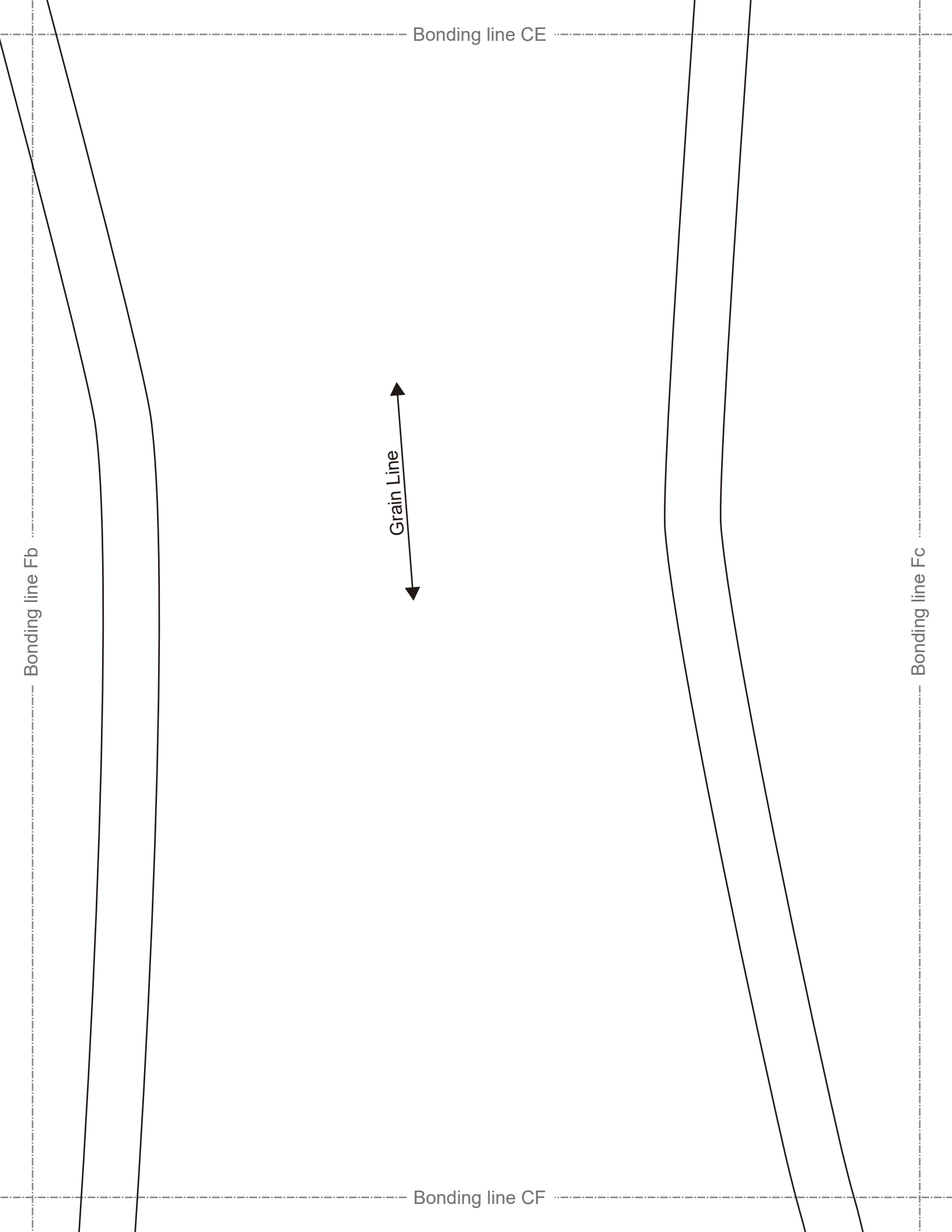
Bonding line CD

Bonding line Eb

**size 11** **MEN'S** **NEW**

Bonding line Ec

Bonding line CE



Bonding line CE

Grain Line

Bonding line Fb

Bonding line Fc

Bonding line CF

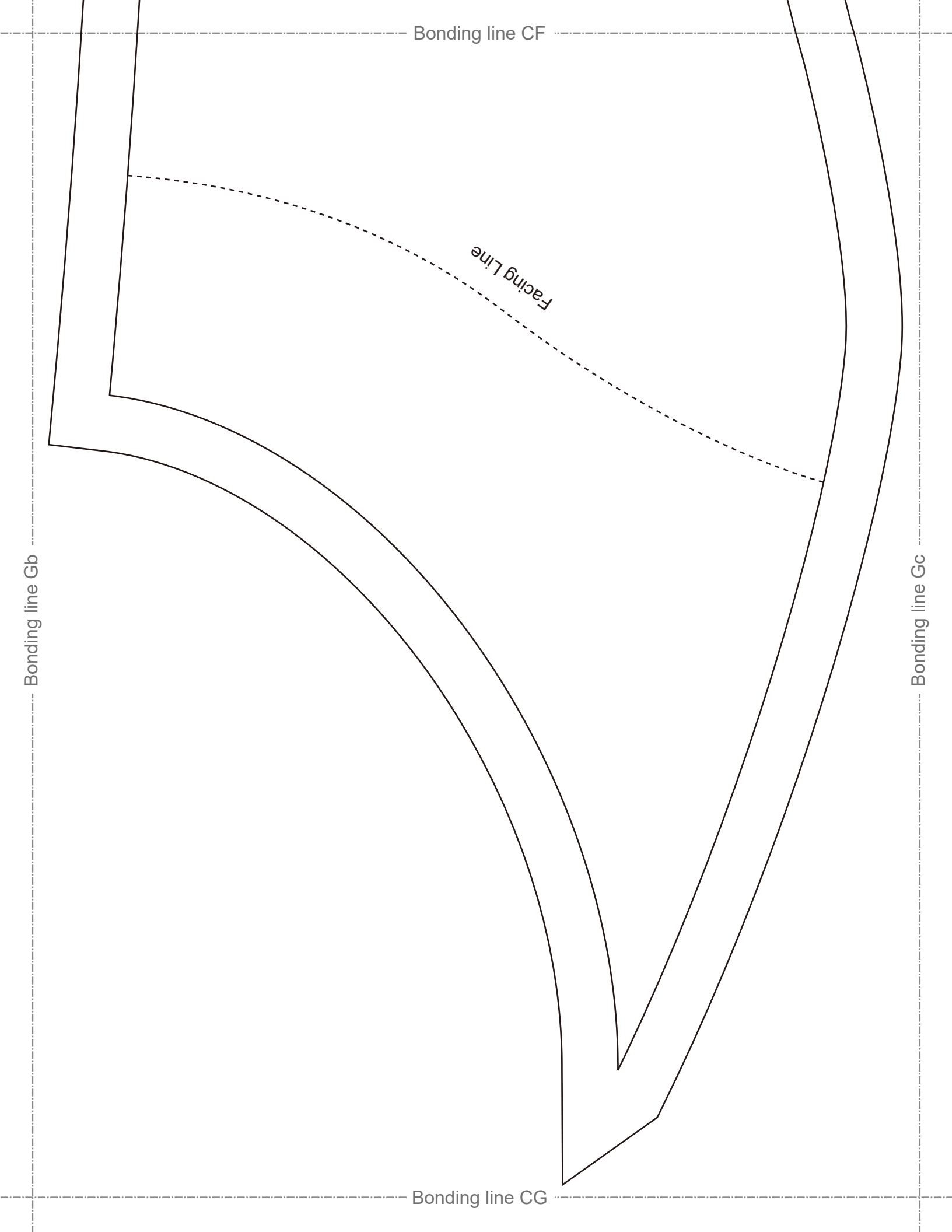
Bonding line CF

Facing Line

Bonding line Gb

Bonding line Gc

Bonding line CG



Seam allowance 1/2in.

Bonding line Ac

Bonding line Ad

Princess Dress 2  
Back body  
two sheets

**MEN'S** **TT**  
size

Bonding line DA

Bonding line DA

Baste

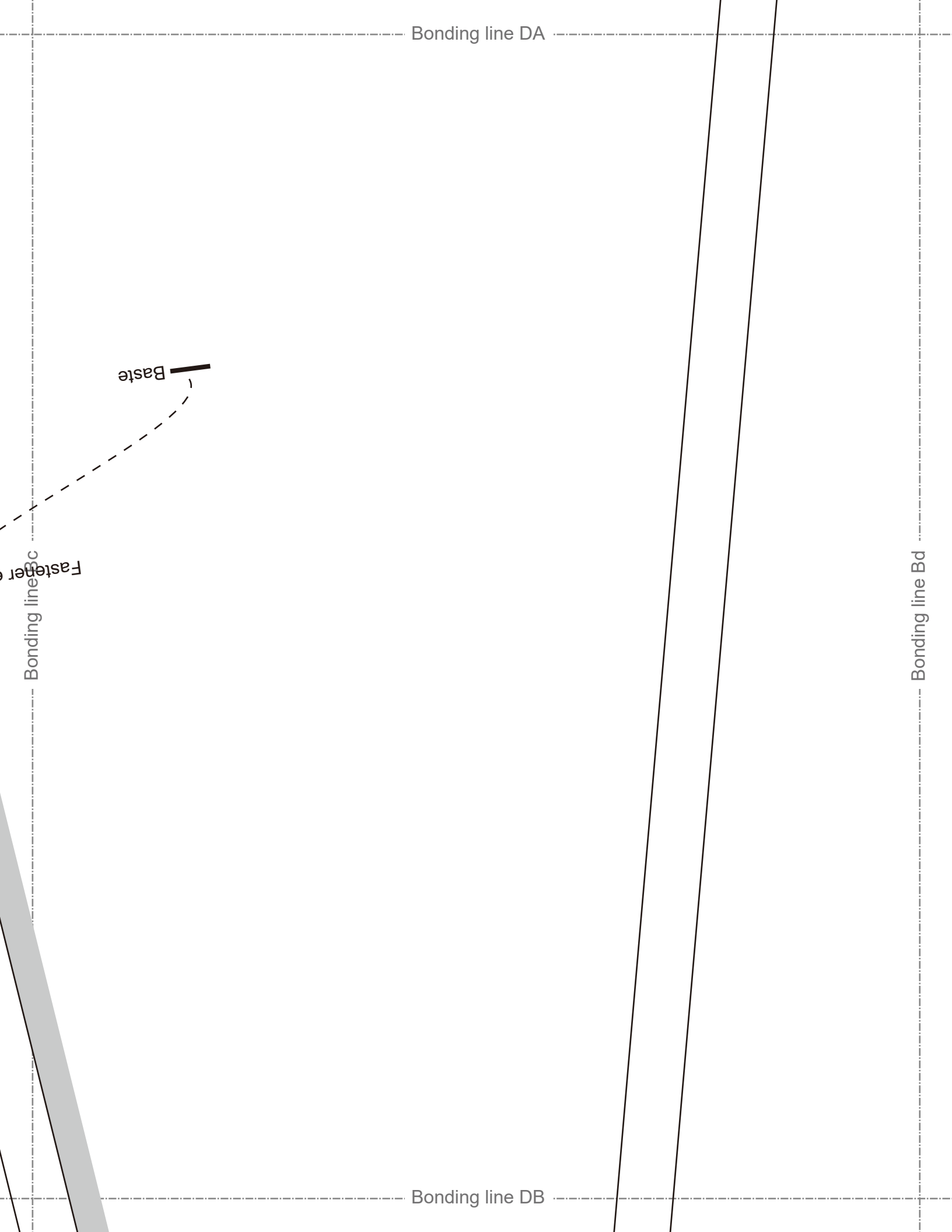


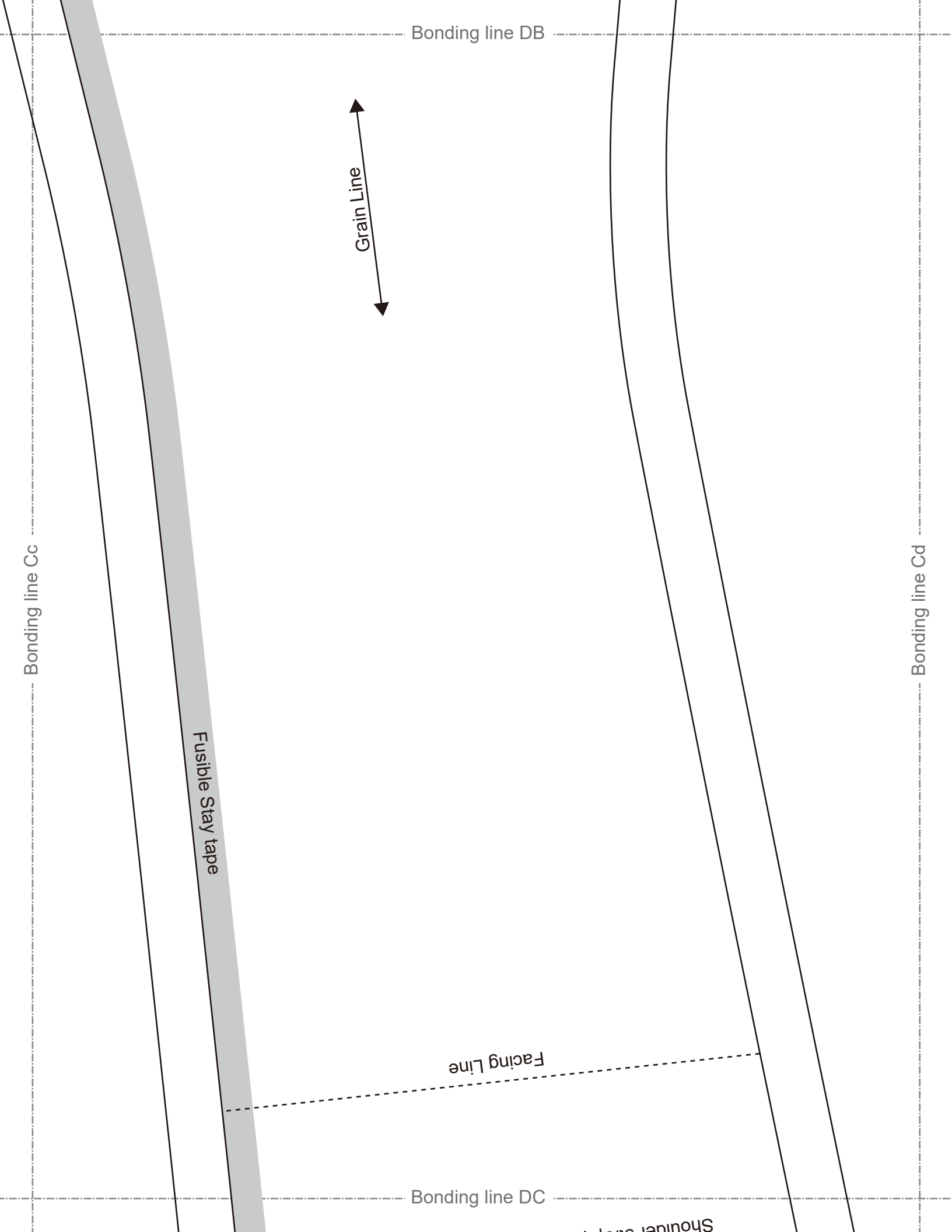
Faster e

Bonding line Bc

Bonding line DB

Bonding line Bd





Bonding line DB

Grain Line

Bonding line Cc

Fusible Stay tape

Bonding line Cd

Facing Line

Bonding line DC

Shoulder stay

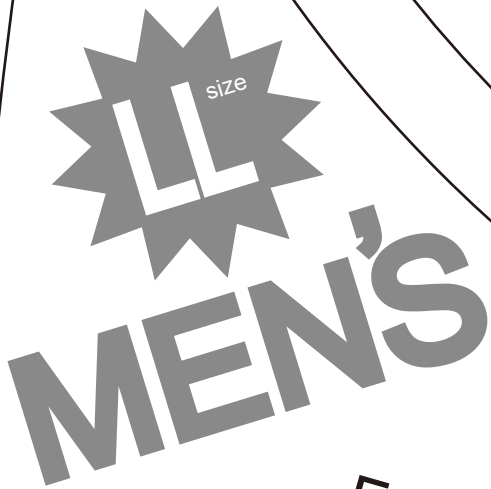
Bonding line DC

Shoulder strap position



Bonding line Dc

Seam allowance 1/2in.



Princess Dress  
Front Facing two sheets  
Fusible interlining two sheets

Bonding line Dd

Bonding line DD