

7.07in cutline

Bonding line Aa

5.9in cutline

4.72in cutline

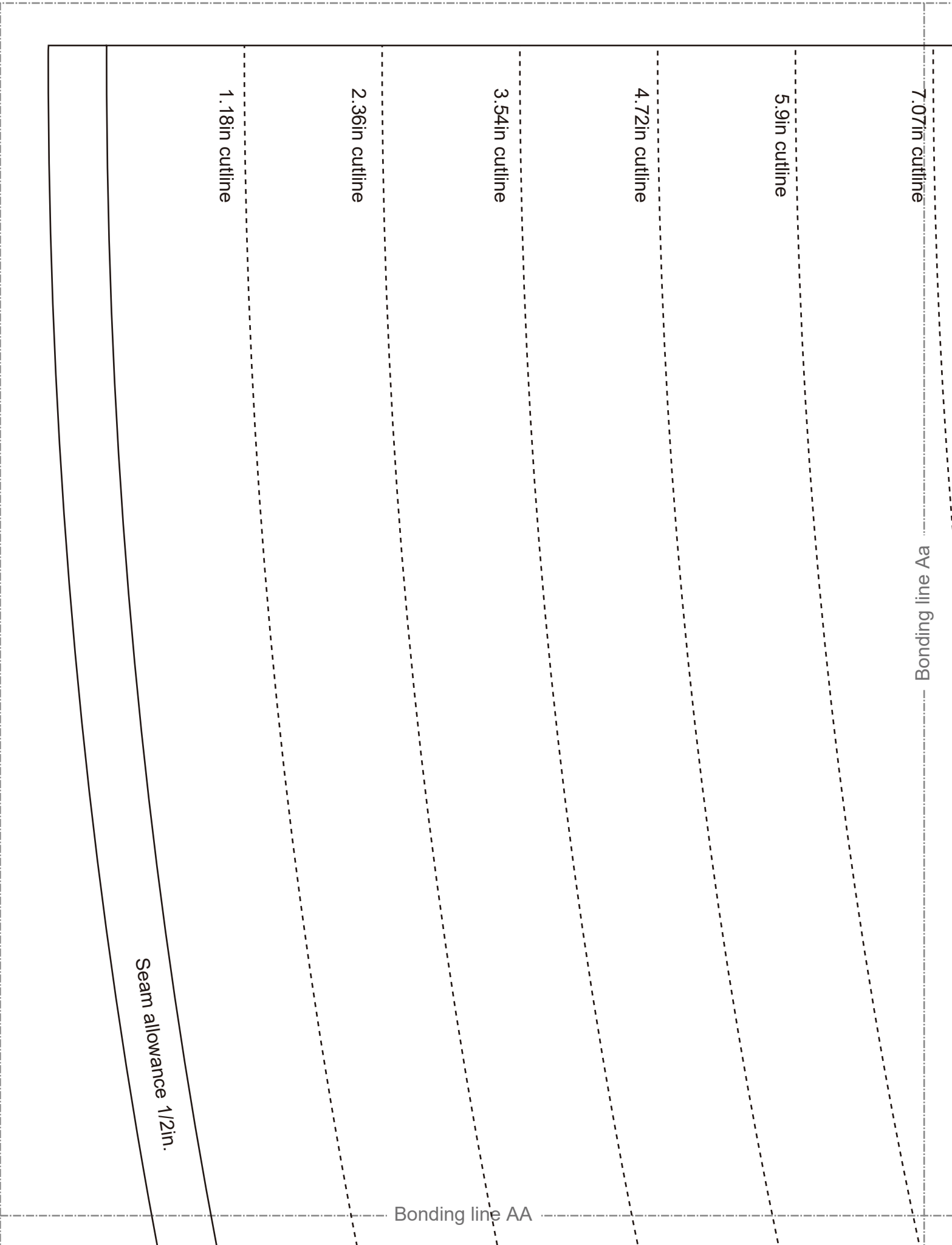
3.54in cutline

2.36in cutline

1.18in cutline

Seam allowance 1/2in.

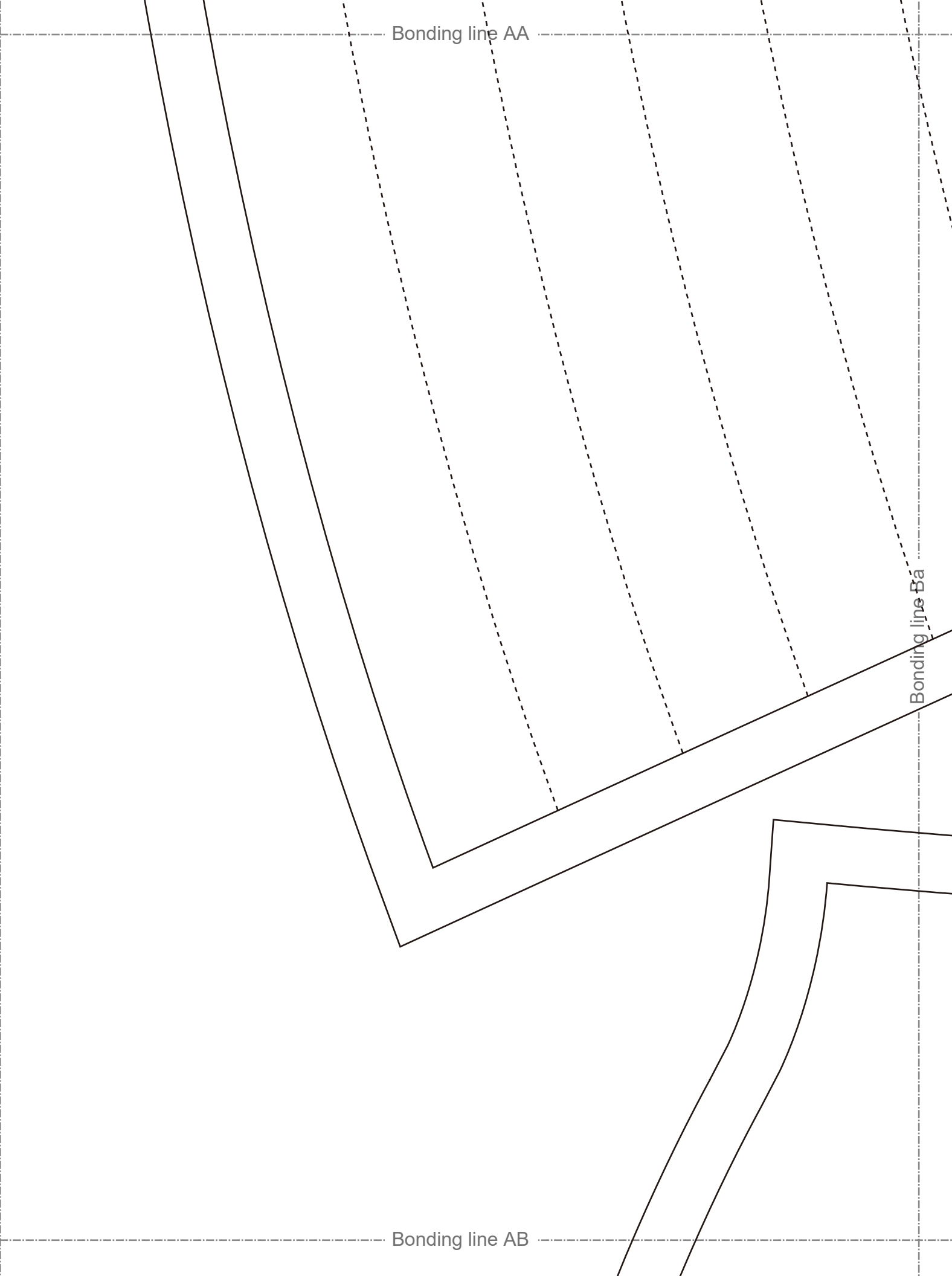
Bonding line AA



Bonding line AA

Bonding line Ba

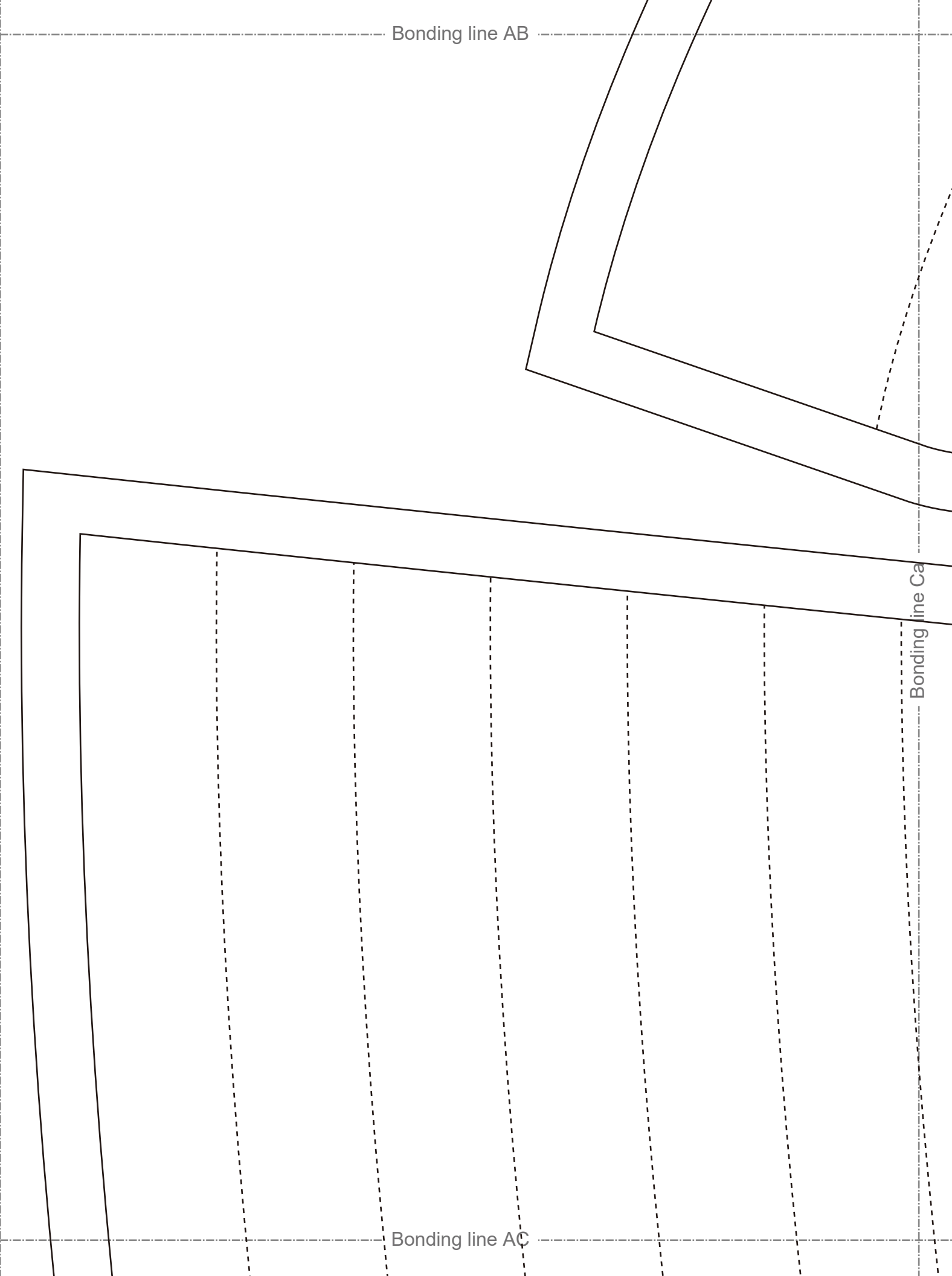
Bonding line AB

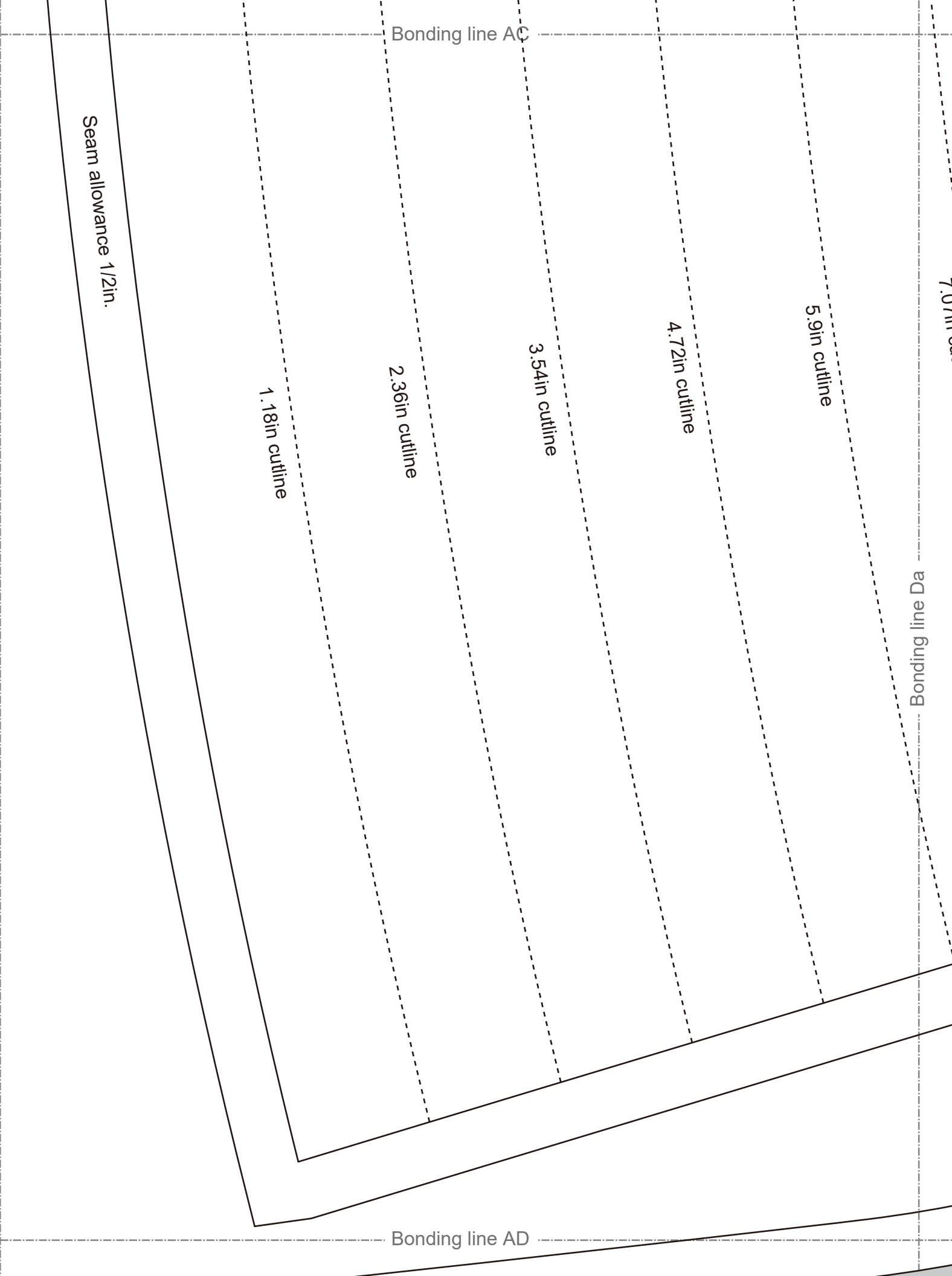


Bonding line AB

Bonding line Ca

Bonding line AC





Bonding line AC

Seam allowance 1/2in.

1.18in outline

2.36in outline

3.54in outline

4.72in outline

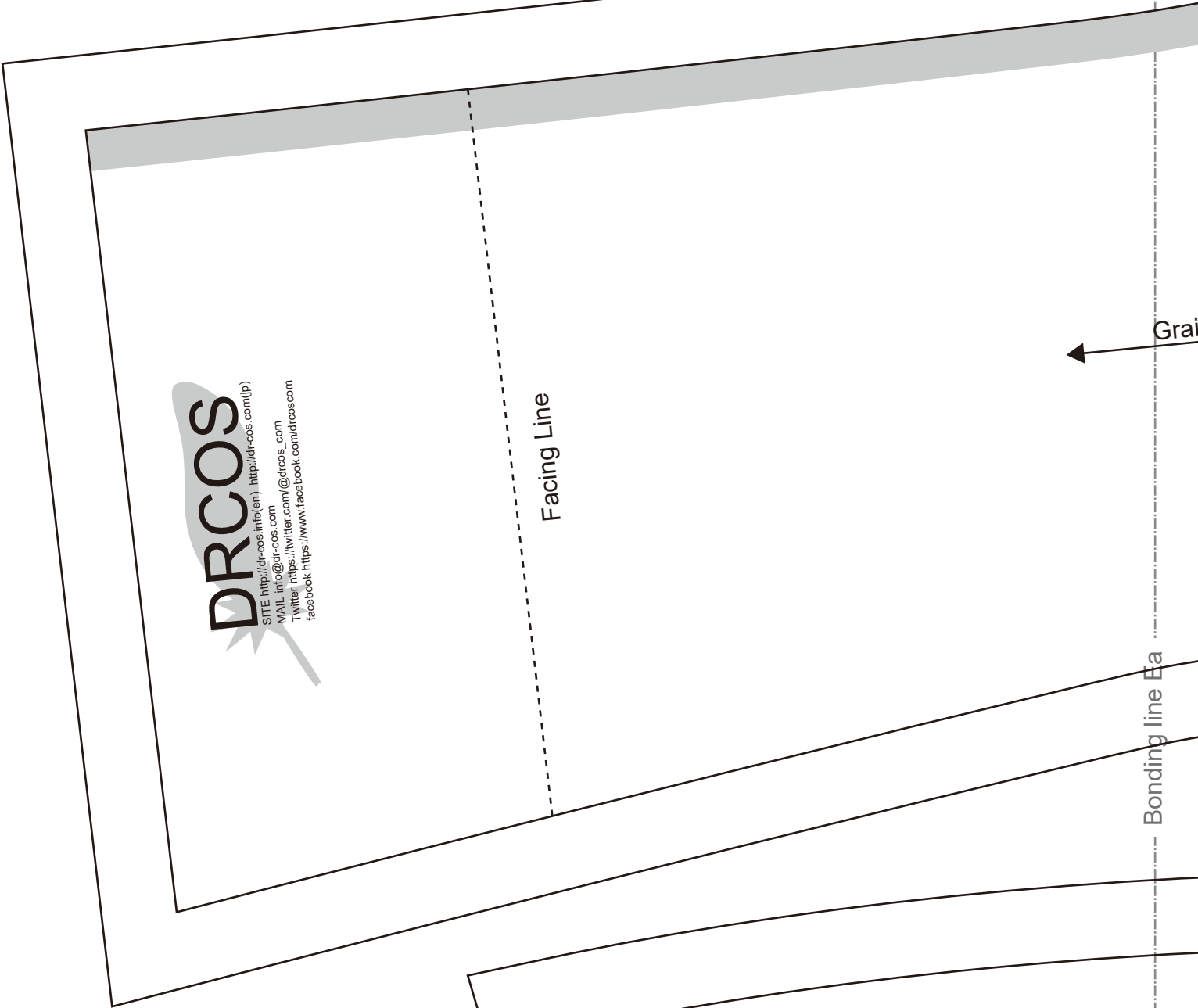
5.9in outline

Bonding line AD

Bonding line AD

7.07in outline

Bonding line AD



DRCOS
 SITE <http://drcos.info/en> <http://drcos.com/jp>
 MAIL info@drcos.com
 Twitter <https://twitter.com/drcos>
 facebook <https://www.facebook.com/drcos.com>

Facing Line

Grain

Bonding line Ea

Bonding line AE

Grain Line

A double-headed arrow pointing vertically, indicating the grain direction of the material.

Bonding line Ab

Bonding line BA

9.44in cutline

8.26in cutline

7.07in cutline

Bonding line Aa

Bonding line BA

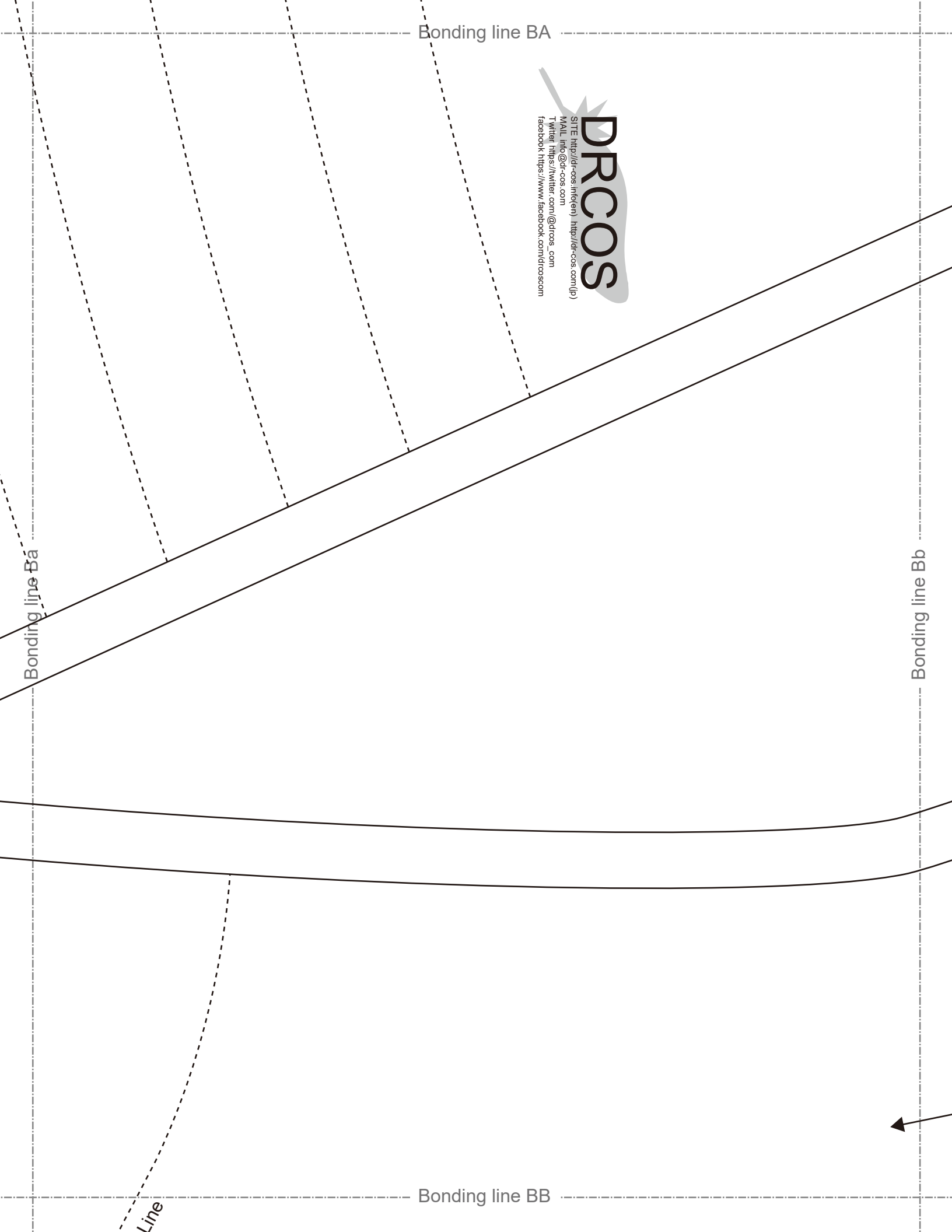
DRCOS
 SITE <http://dr-cos.int/en/> <http://dr-cos.com/jp/>
 MAIL info@dr-cos.com
 Twitter https://twitter.com/drcos_com
 facebook <https://www.facebook.com/drcoscom>

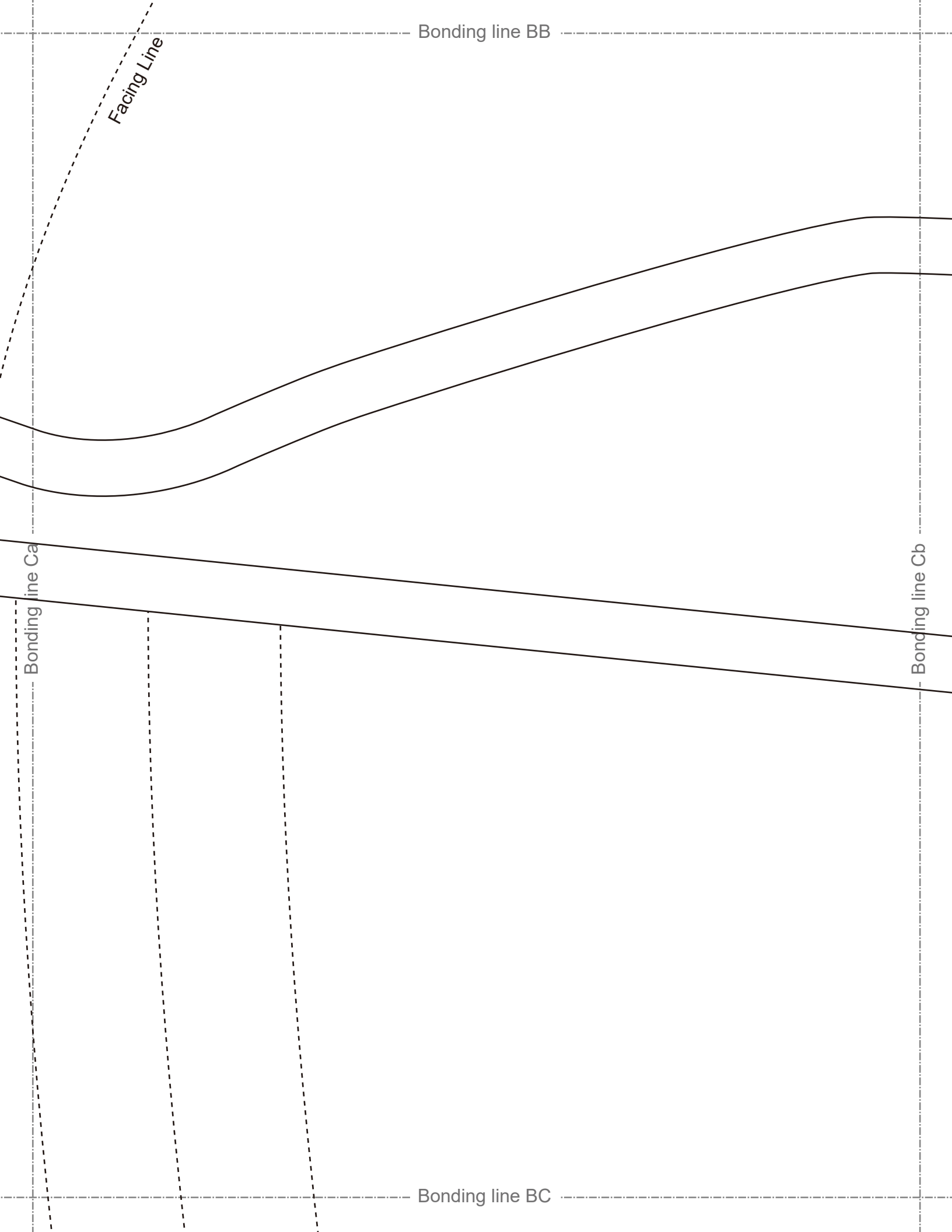
Bonding line Ba

Bonding line Bb

Bonding line BB

Line





Bonding line BC

9.44in cutline

8.26in cutline

7.07in cutline

Bonding line Da

Bonding line Db



Fusible Stay tape

Bonding line BD

Bonding line BD

Grain Line

Bonding line Ea

Bonding line Eb

Princess Dress
Back Facing two sheets
Fusible interlining two sheets

Seam allowance 1/2in.

Bonding line BE



Bonding line Ab

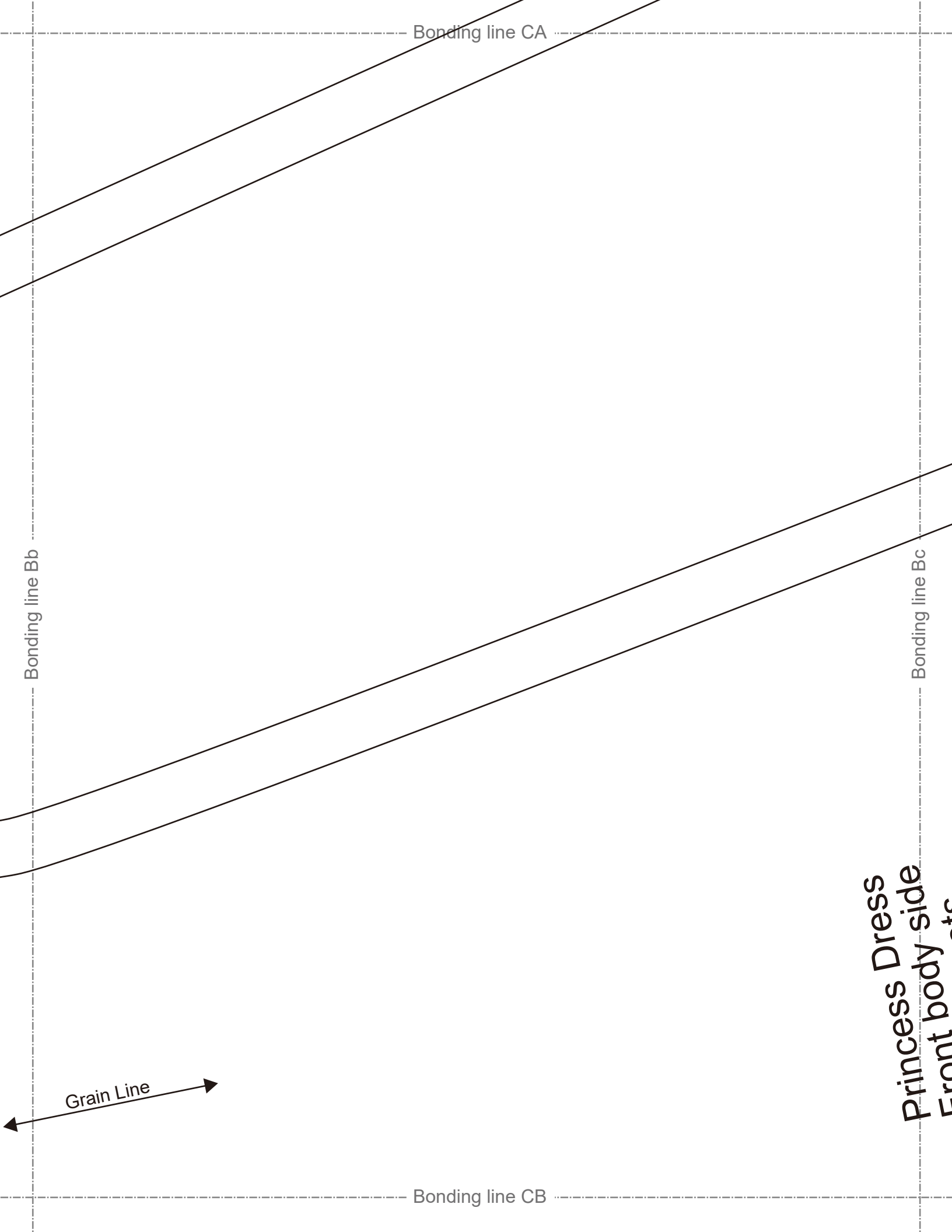
MEN'S

A stylized, jagged-edged letter 'G' logo. Inside the 'G', the word "size" is written vertically.

size

Bonding line Ac

Bonding line CA



Bonding line CB

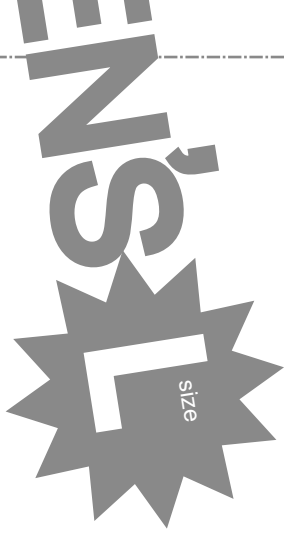
Bonding line Cb

Bonding line Cc

MEN

Bonding line CC

Back body
two sheet

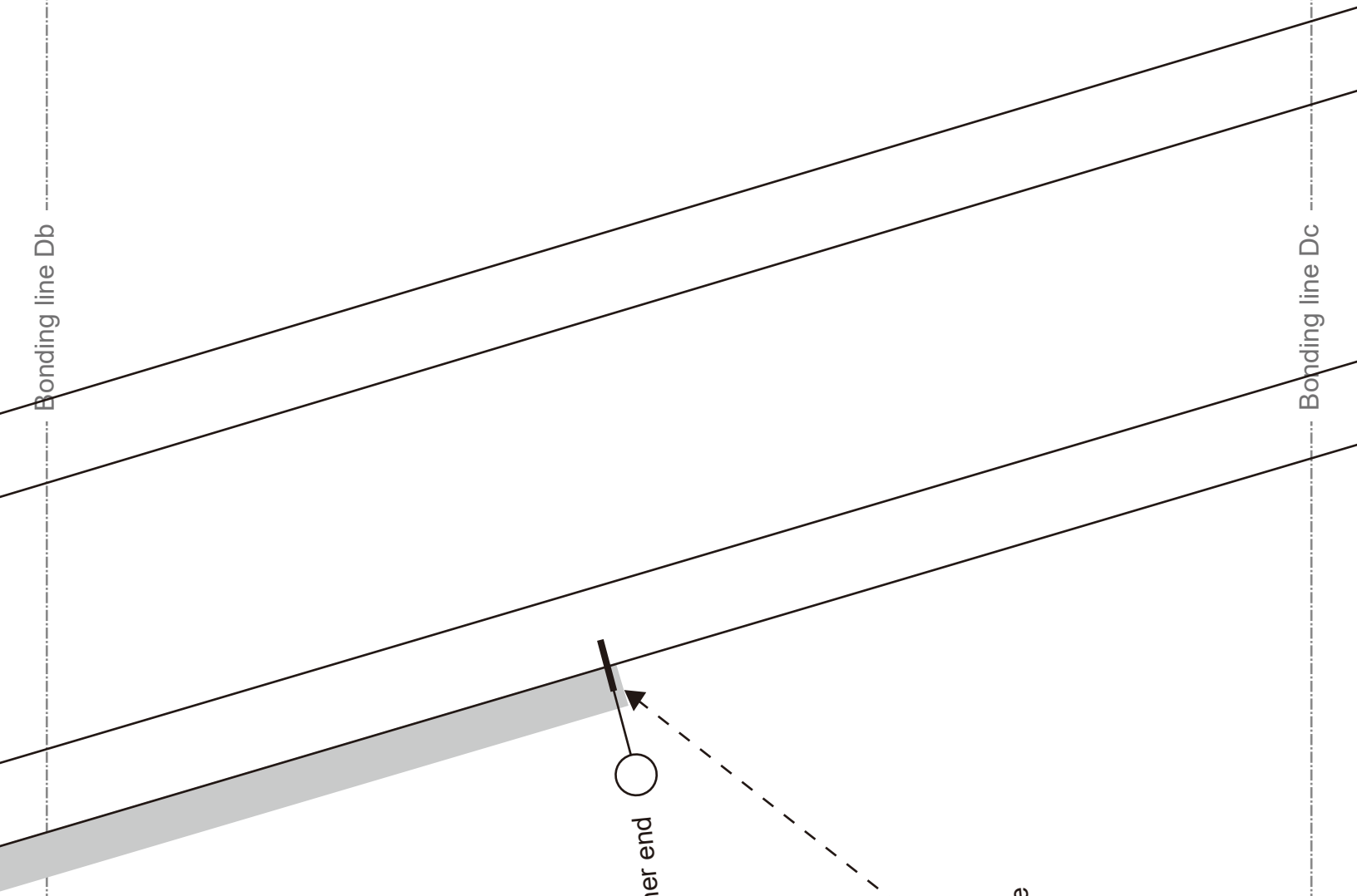


Bonding line CC

body
sheets

Bonding line Db

Bonding line Dc



Fastener end

Baste

Bonding line CD

Bonding line CD

Princess Dress
Back body
two sheets

Bonding line Eb

Bonding line Ec

Bonding line CE

Symmetry



Princess Dress
Front body
one sheets

Bonding line Ac

Bonding line Ad

Bonding line DA

Bonding line DA

Bonding line Bc

Bonding line Bd

Princess Dico
Front body side
two sheets

size
MEN'S T

Bonding line DB

Bonding line DB

Bonding line Cc

Bonding line Cd

Bonding line DC

Princess Dress
Back body sheet
two sheet

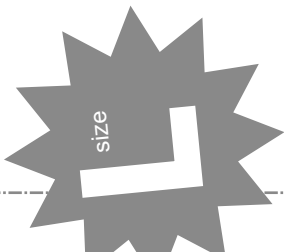


neets
ody side
s Dress

Bonding line DC

Bonding line Dc

Bonding line Dd



Bonding line DD

9.44in outline

8.26in outline

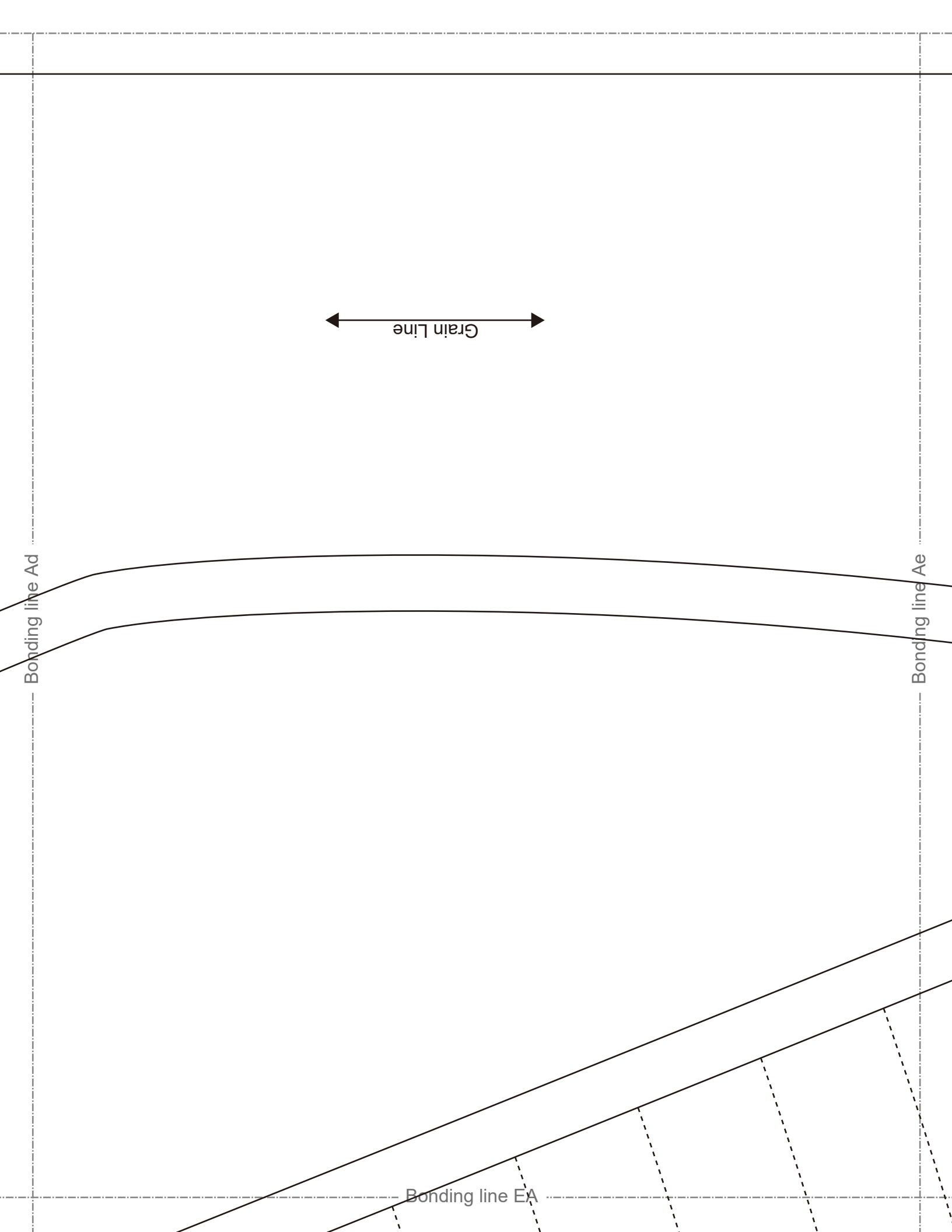
MEN'S 

Bonding line DD

Bonding line Ec

Bonding line Ed

Bonding line DE



Grain Line

Bonding line Ad

Bonding line Ae

Bonding line EA

Bonding line Bd

Bonding line EA



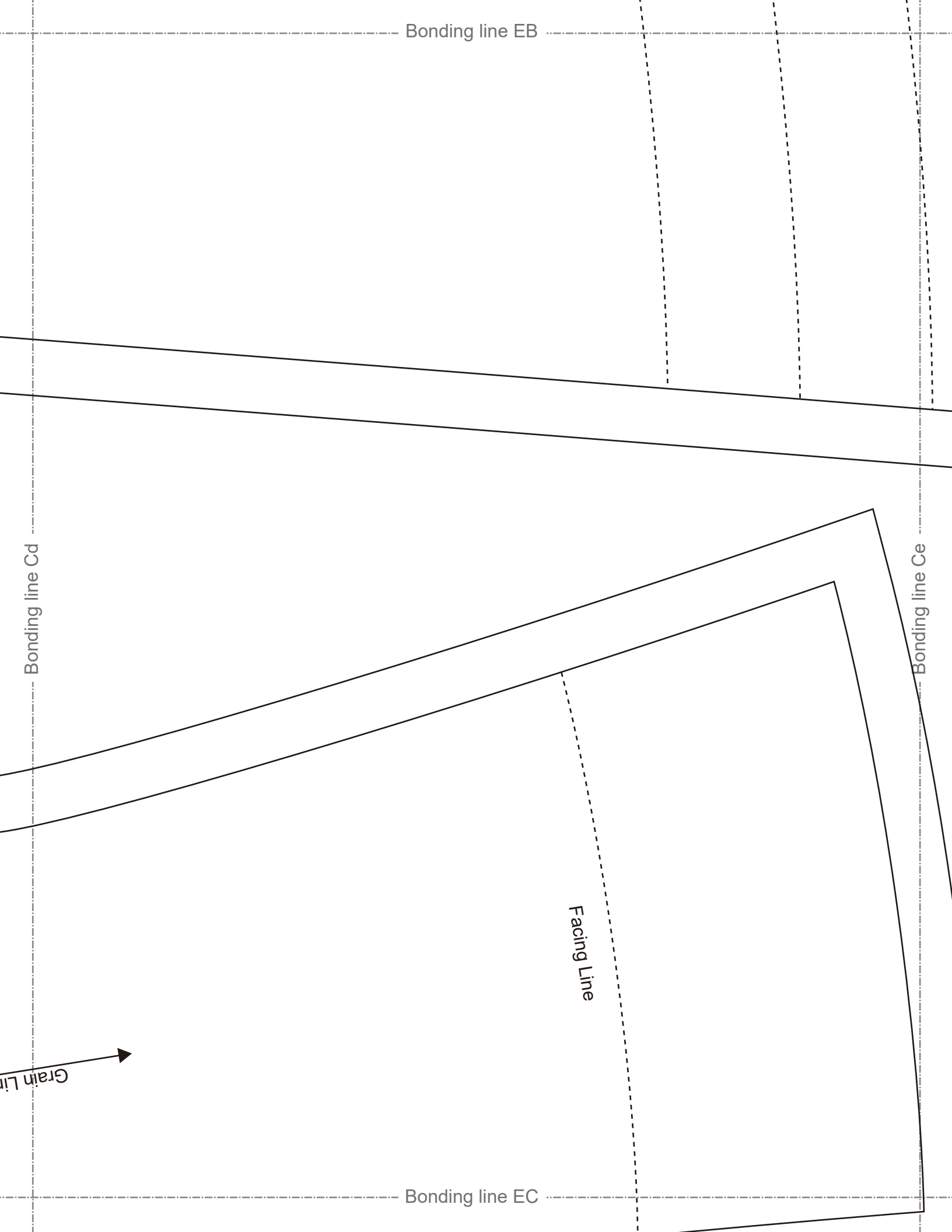
9.44in outline

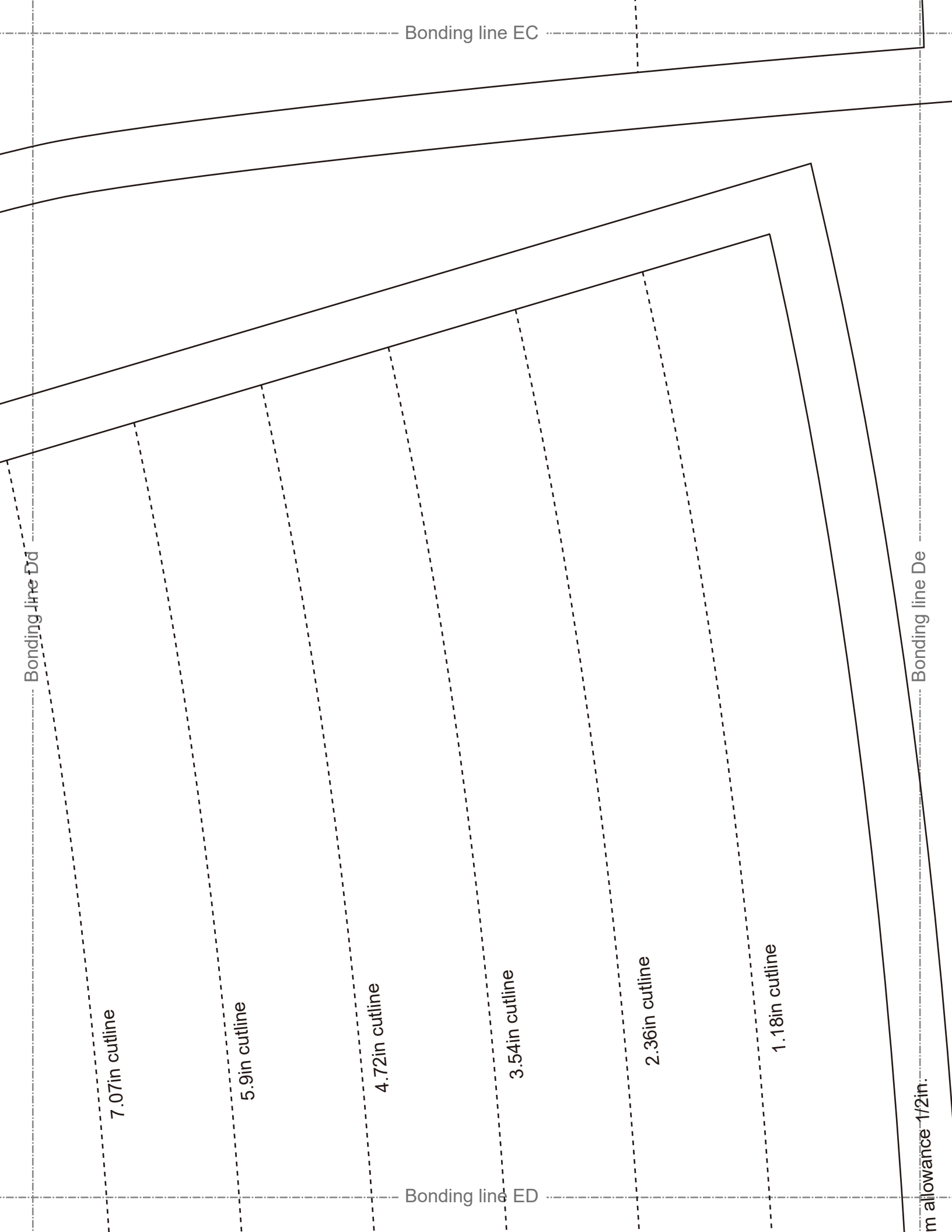
8.26in outline

7.07in outline

Bonding line Be

Bonding line EB







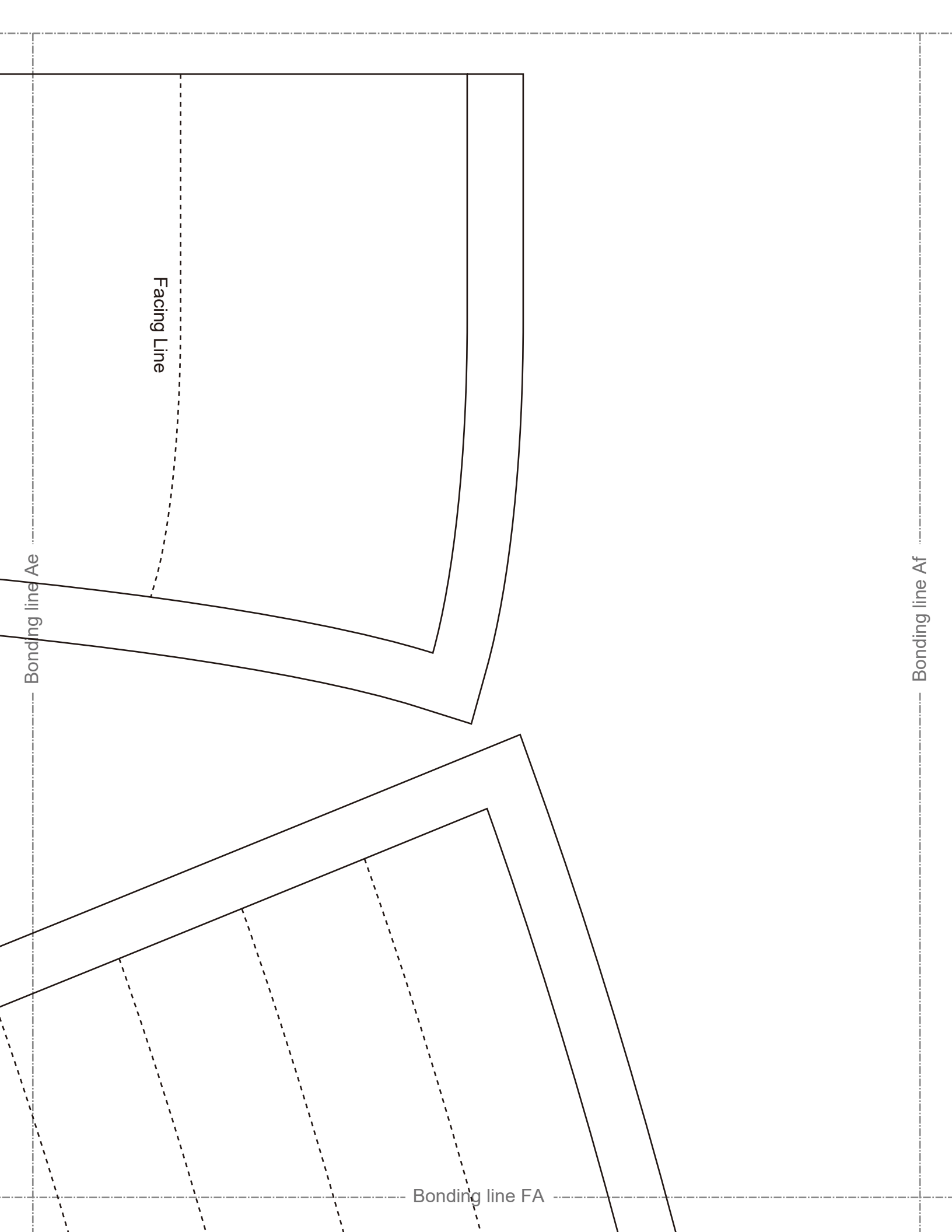
Bonding line ED

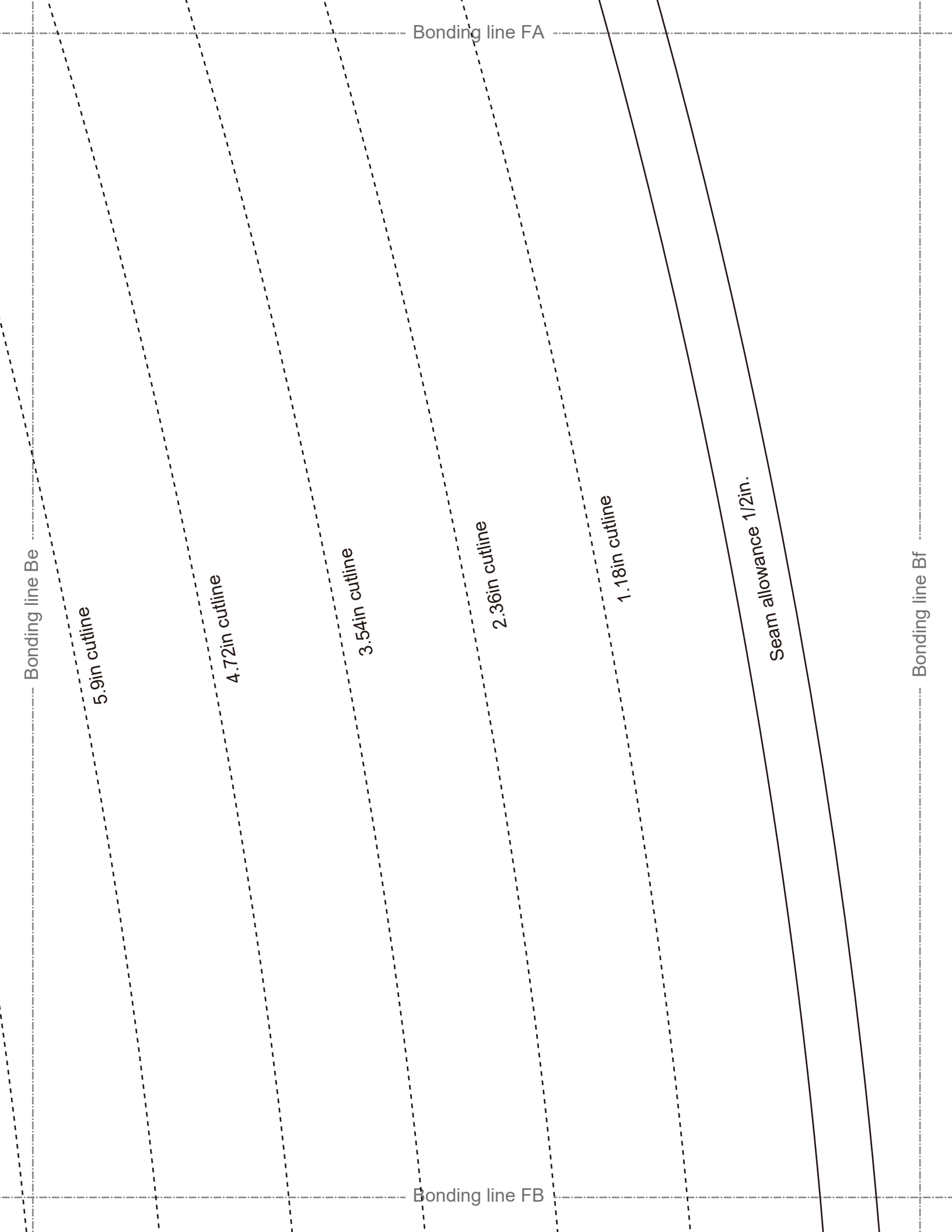
Bonding line Ed

Bonding line Ee

Bonding line EE

Seam allowance





Bonding line Be

5.9in cutline

4.72in cutline

3.54in cutline

2.36in cutline

1.18in cutline

Seam allowance 1/2in.

Bonding line FB

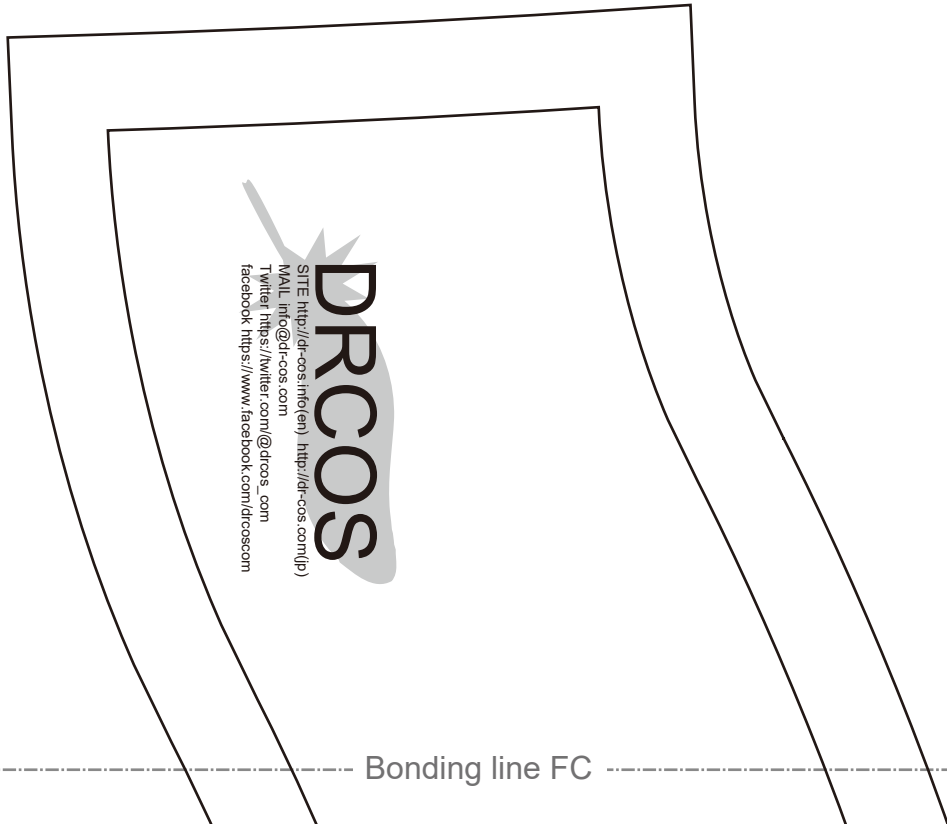
Bonding line FA

Bonding line Bf

Bonding line FB

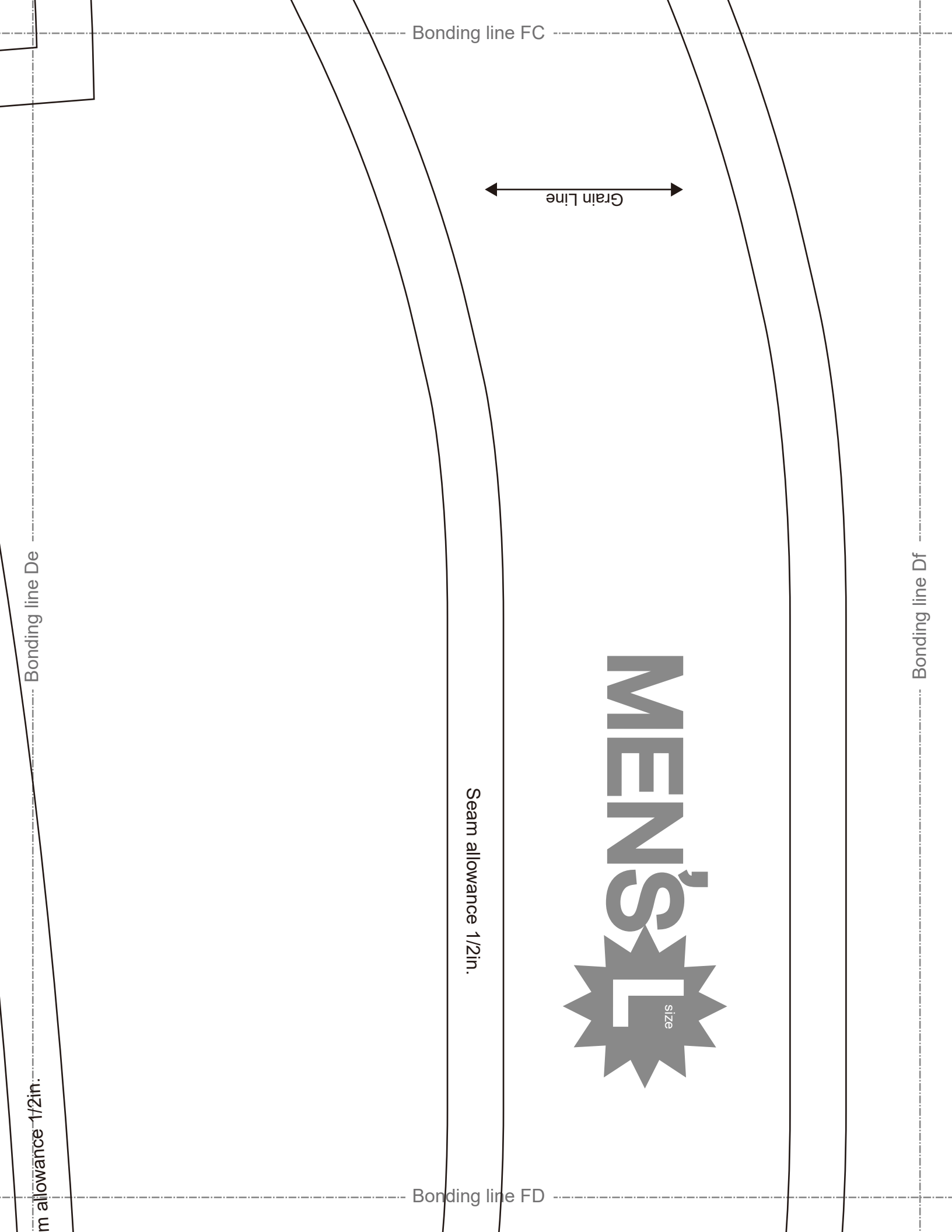
Bonding line Ce

Bonding line Cf



DRCOS
SITE <http://drcos.info/en> <http://drcos.com/jp>
MAIL info@drcos.com
Twitter https://twitter.com/drcos_com
facebook <https://www.facebook.com/drcoscom>

Bonding line FC



Bonding line FC

Grain Line

Bonding line De

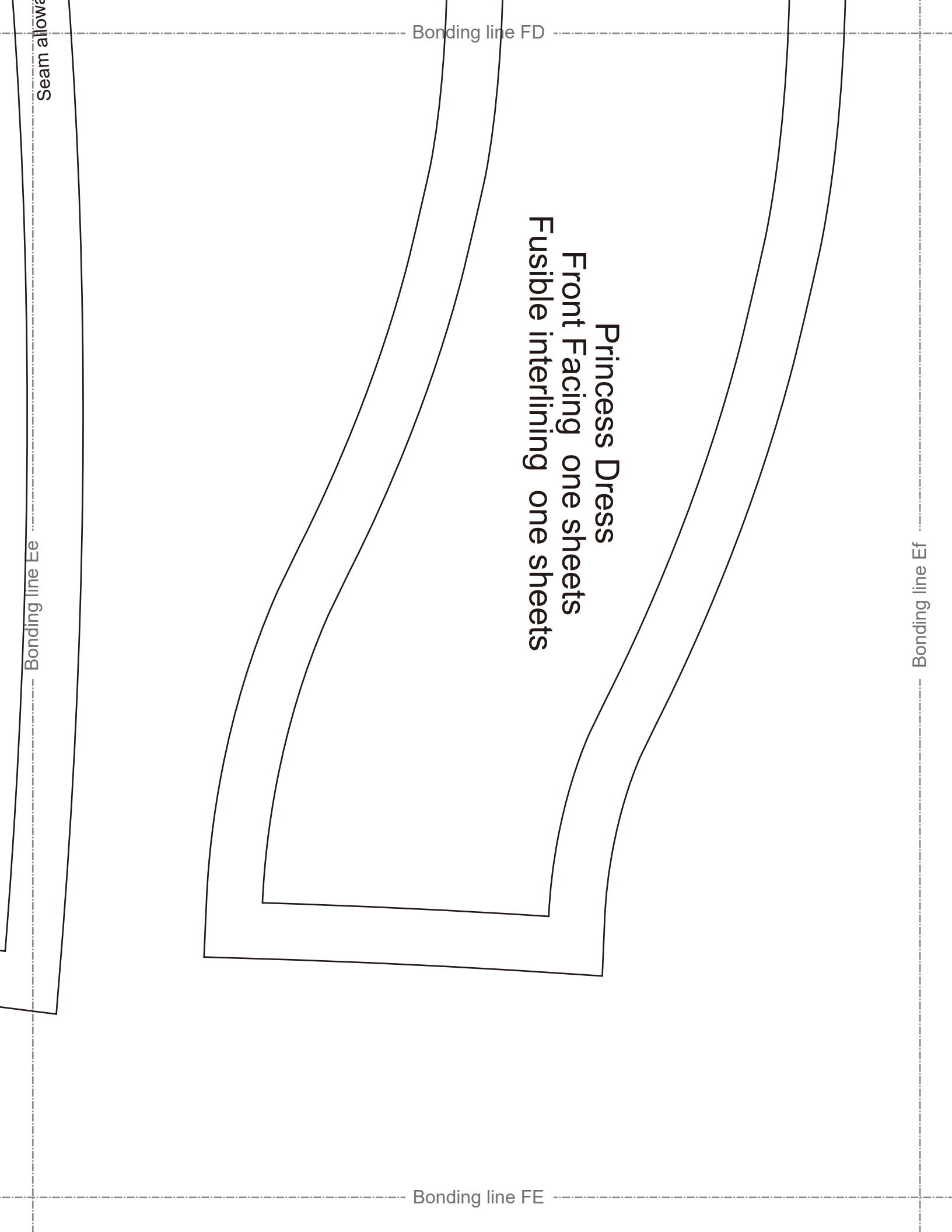
Bonding line Df

MEN'S
G size

Seam allowance 1/2in.

Bonding line FD

m allowance 1/2in.



Princess Dress
Front Facing one sheets
Fusible interlining one sheets

Bonding line FD

Bonding line FE

Bonding line Ee

Bonding line Ef

Seam allowance