

Facing Line

The image shows a technical drawing of a curved component, possibly a part of a wheel or a similar structure. It features a solid outer boundary and a dashed inner boundary labeled 'Facing Line'. A horizontal dashed line at the bottom is labeled 'Bonding line AA'. On the right side, there is a vertical dashed line labeled 'Bonding line Aa'. The drawing is enclosed in a dashed rectangular frame.

Bonding line AA

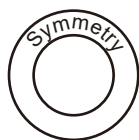
Bonding line Aa

Bonding line AA



Bonding line Ba

# Princess Dress Front body one sheets



Bonding line AB

Bonding line AB

LADIES'S size

Bonding line Ca



Bonding line AG

Bonding line AG

9.44in cutline

8.26in cutline

7.07in cutline

5.9in cutline

4.72in cutline

3.54in cutline

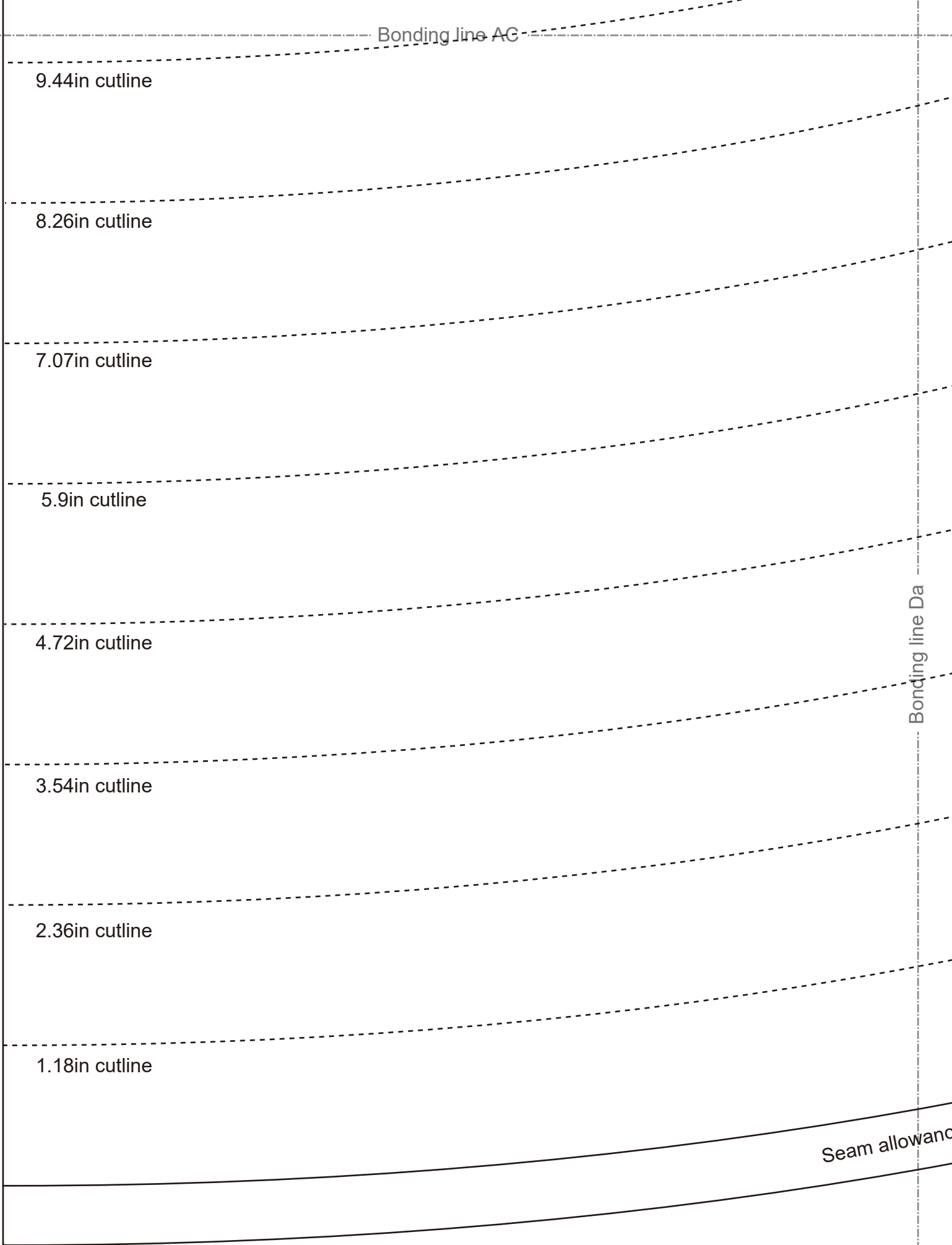
2.36in cutline

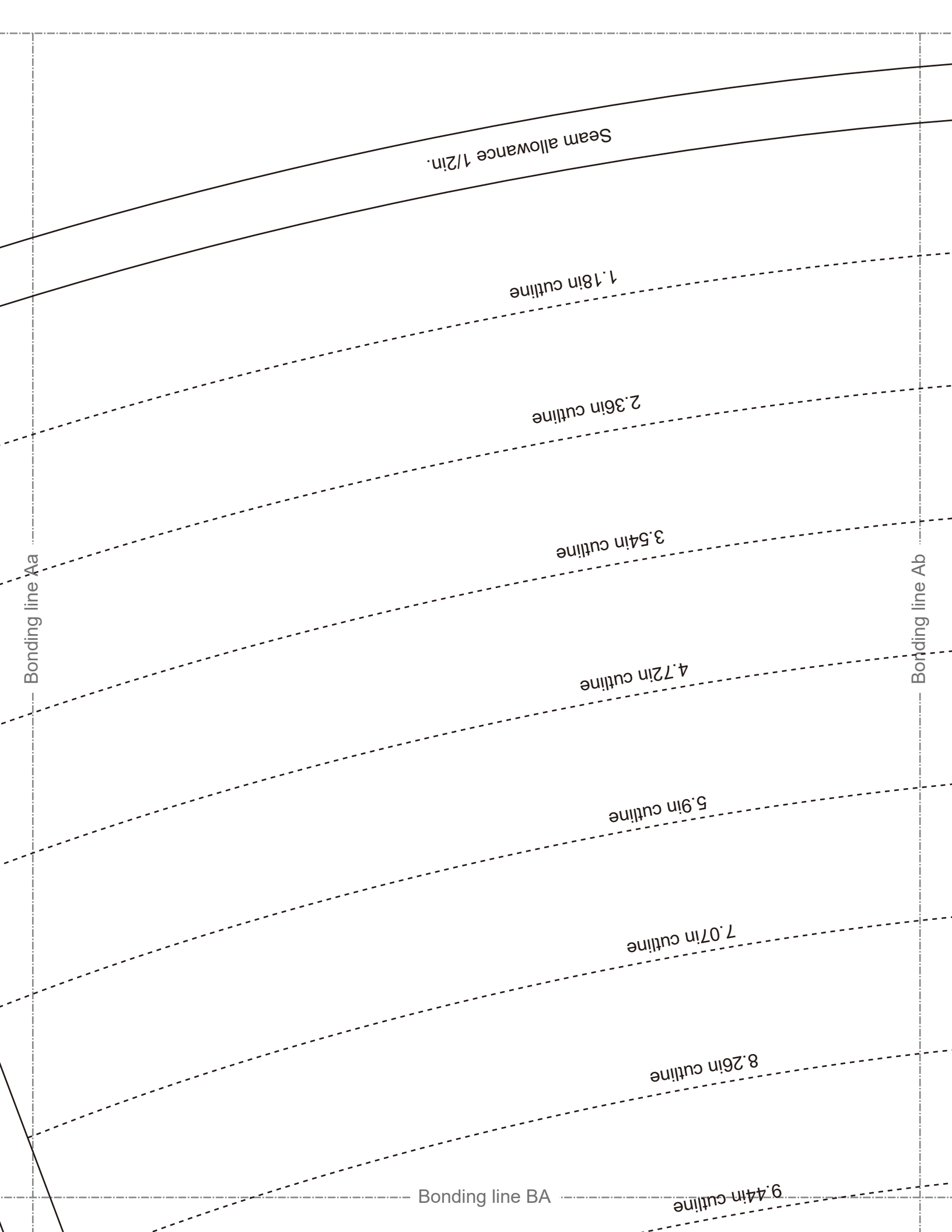
1.18in cutline

Bonding line Da

Seam allowance

Bonding line AD





Bonding line BA

9.44in outline

**DRCOS**  
 SITE <http://dr-cos.info/en> [http://dr-cos.com\(fp\)](http://dr-cos.com(fp))  
 MAIL [info@dr-cos.com](mailto:info@dr-cos.com)  
 Twitter [https://twitter.com/dr-cos\\_com](https://twitter.com/dr-cos_com)  
 Facebook <https://www.facebook.com/drcoscom>

**ADIES**  
**S**  
 size

Bonding line Ba

Bonding line Bb

Bonding line BB

Bonding line BB

Access Dress  
front body side  
two sheets

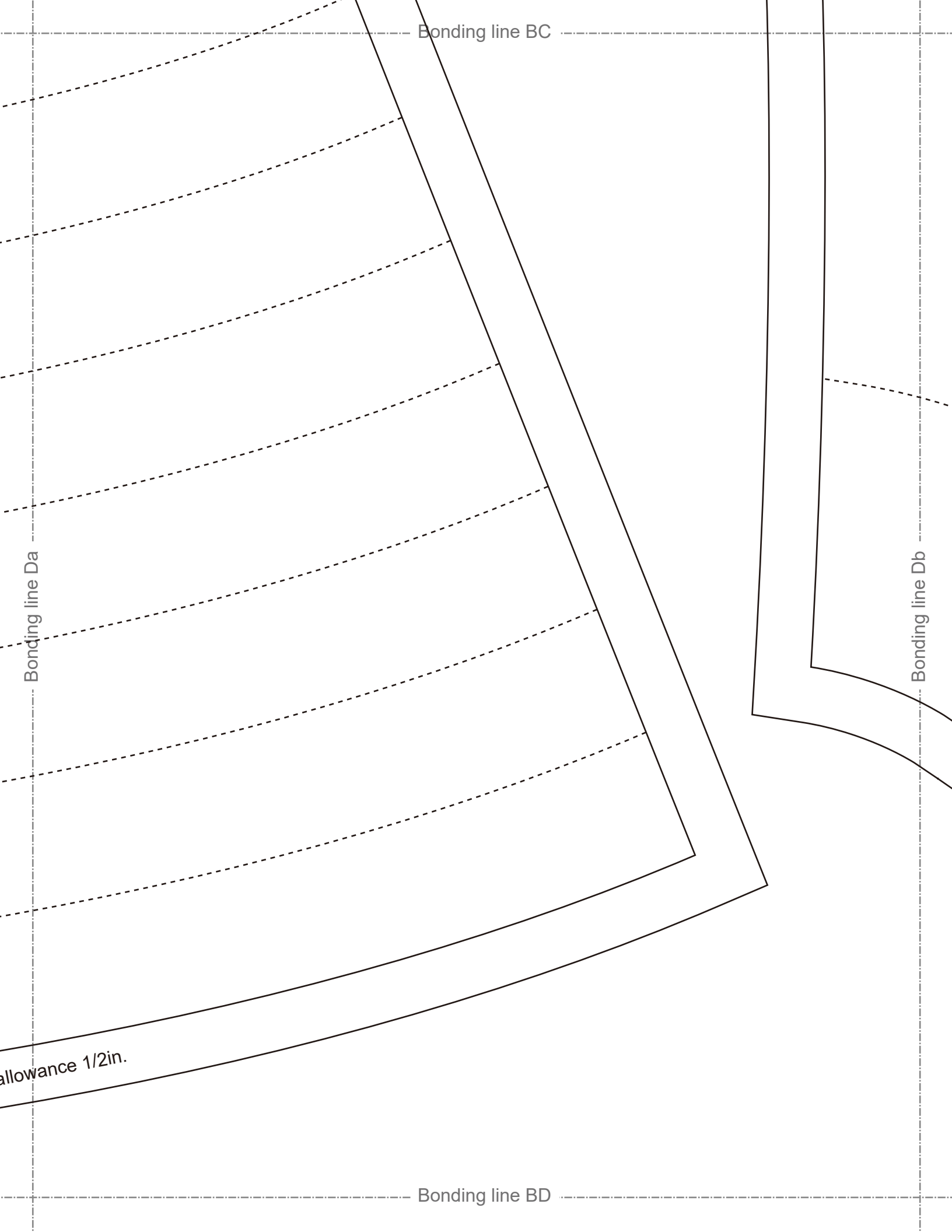
Bonding line Ca

Bonding line Cb

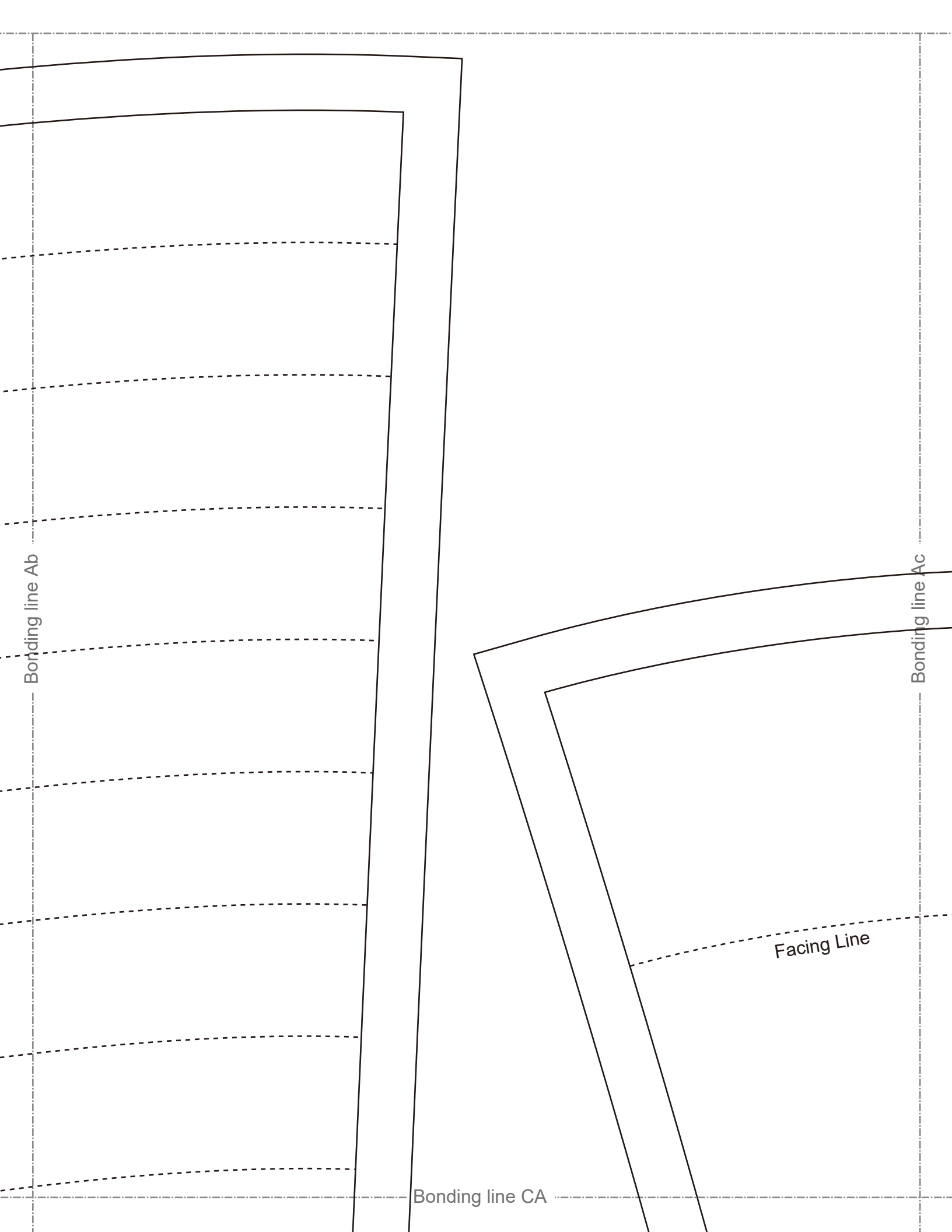
Bonding line BC

**DRCOS**

SITE [http://dr-cos.info\(en\)](http://dr-cos.info(en)) [http://dr-cos.com\(jp\)](http://dr-cos.com(jp))  
MAIL [info@dr-cos.com](mailto:info@dr-cos.com)  
Twitter [https://twitter.com/drcos\\_com](https://twitter.com/drcos_com)  
facebook <https://www.facebook.com/drcoscom>





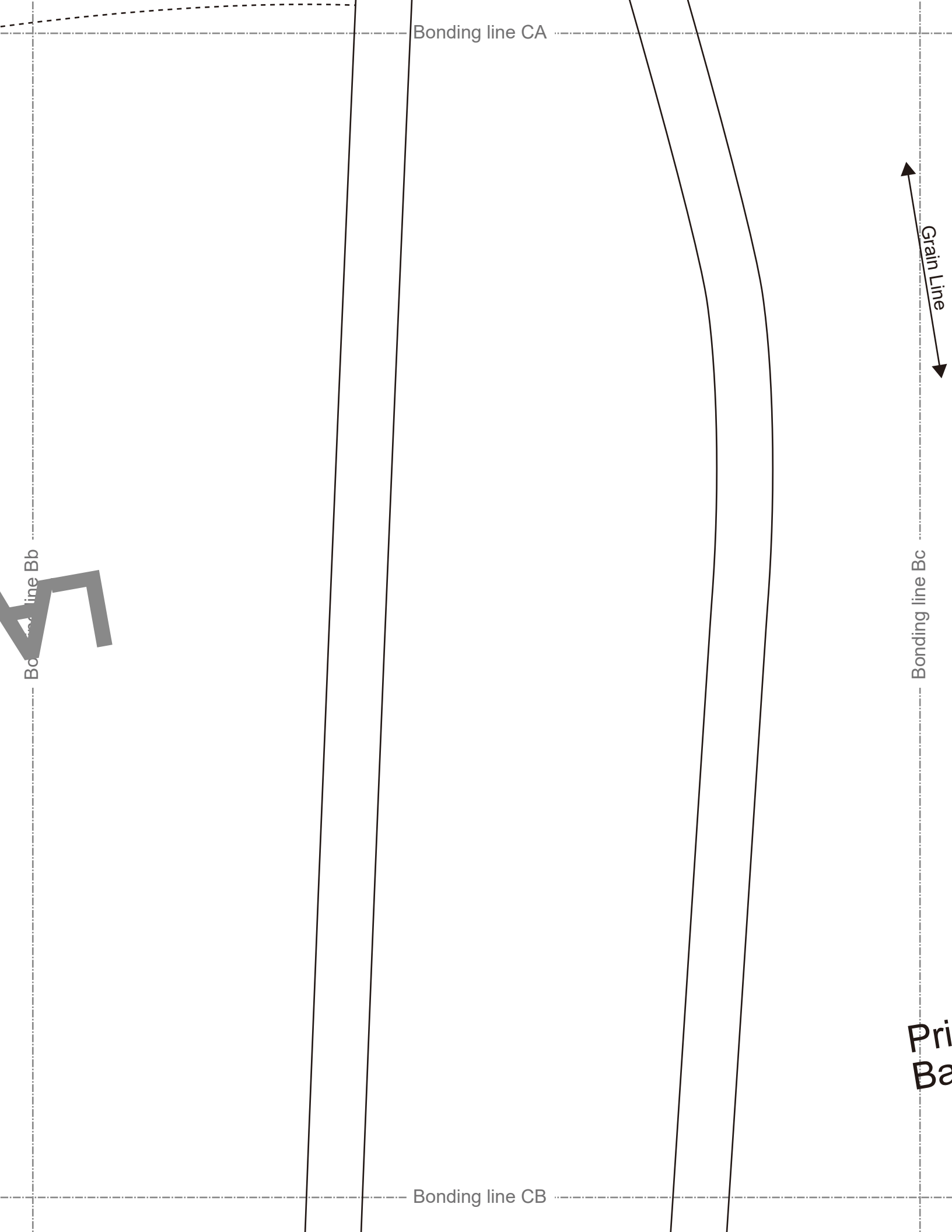


Bonding line Ab

Bonding line Ac

Bonding line CA

Facing Line



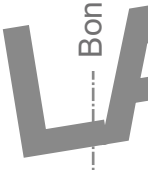
Princes  
Front b  
two

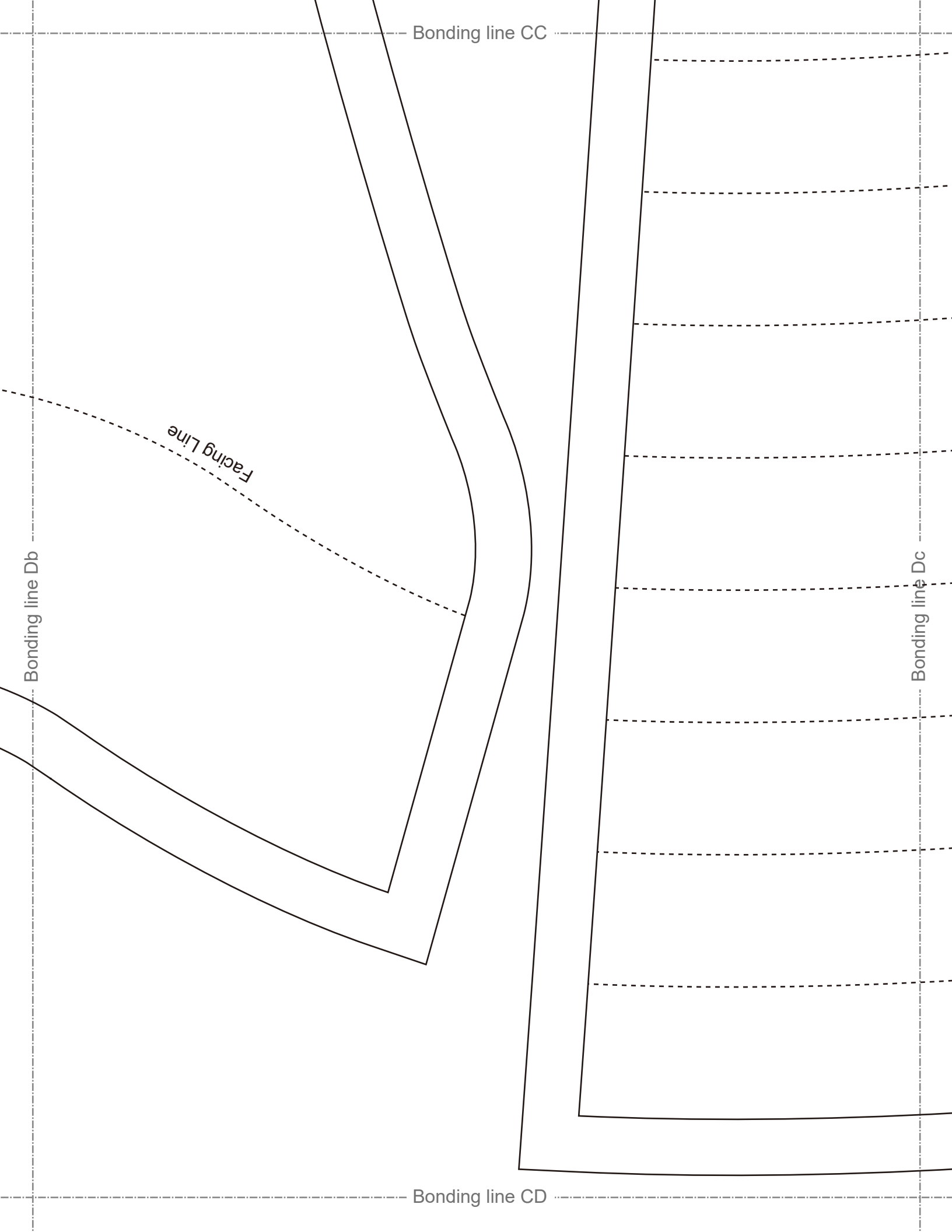
Bonding line Cb

Bonding line CB

Bonding line Cc

Bonding line CC





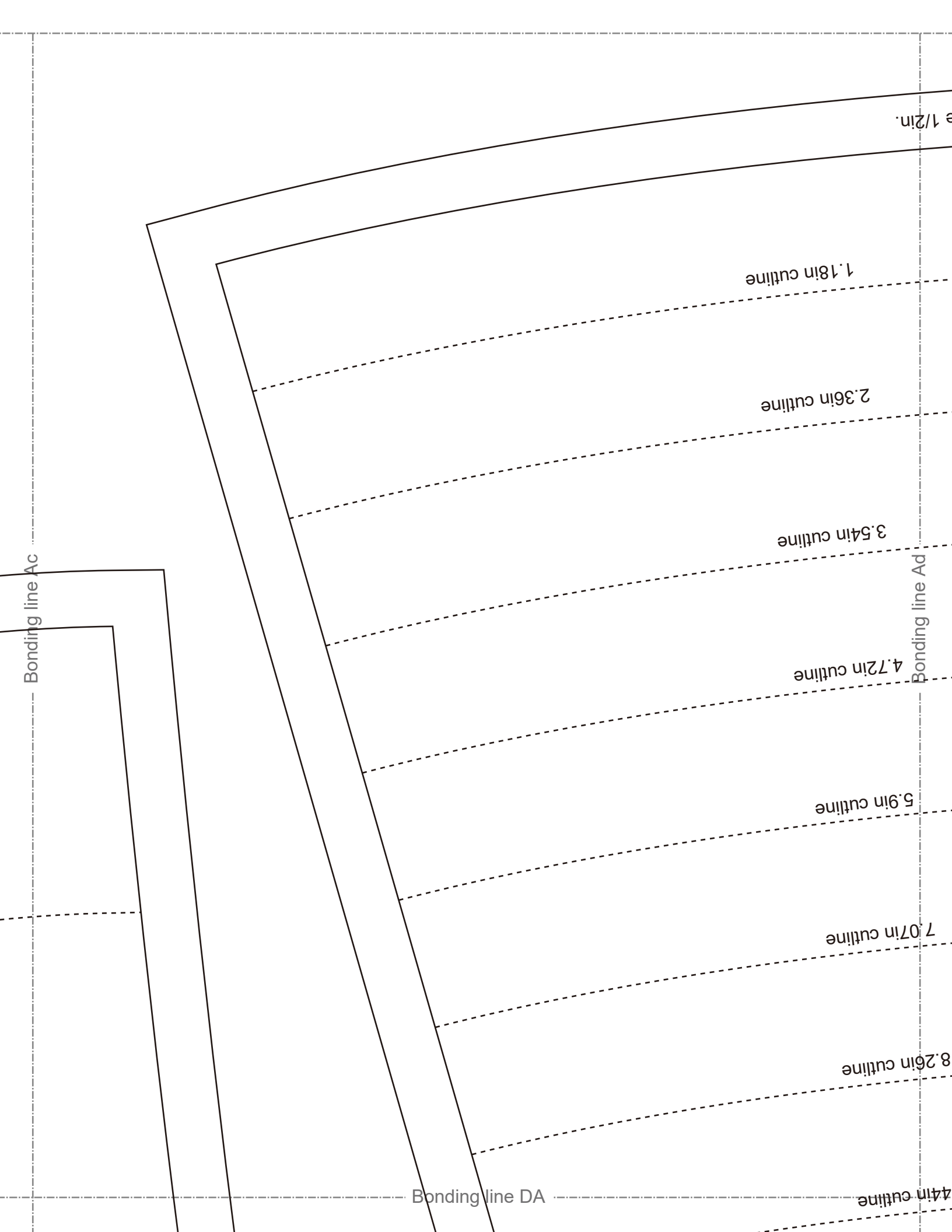
Bonding line CC

Facing Line

Bonding line Db

Bonding line Dc

Bonding line CD



9.44in cutline

1.18in cutline

2.36in cutline

3.54in cutline

4.72in cutline

5.9in cutline

7.07in cutline

8.26in cutline

9.44in cutline

Bonding line Ac

Bonding line Ad

Bonding line DA

**Princess Dress  
Back body side  
two sheets**

Grain Line

Bonding line Bc

Bonding line DA

cutting outline



Bonding line Bd

Baste

astener end

Bonding line DB



Bonding line DB

Bonding line Cc

LADIES' size S

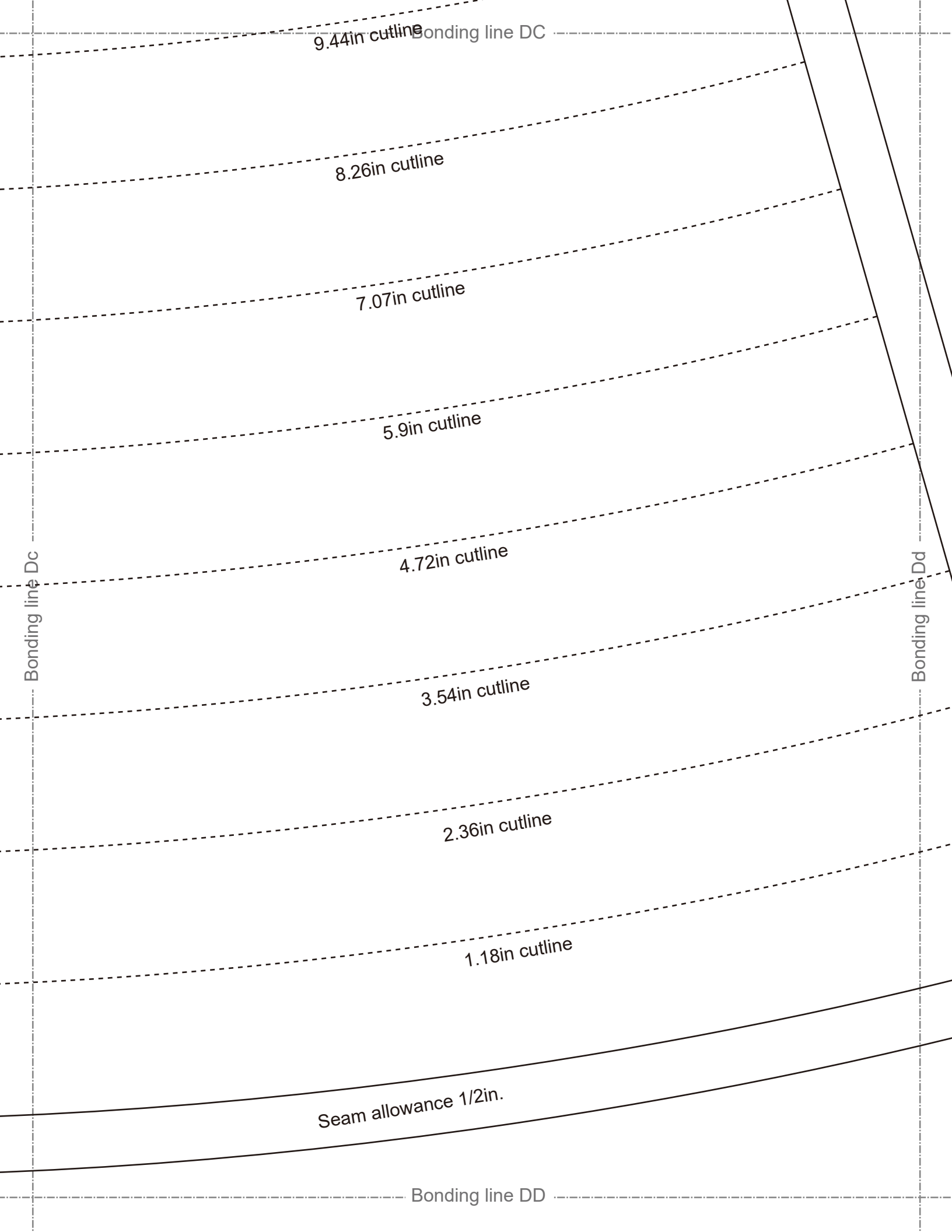
Fusible Stay tape

Bonding line Cd

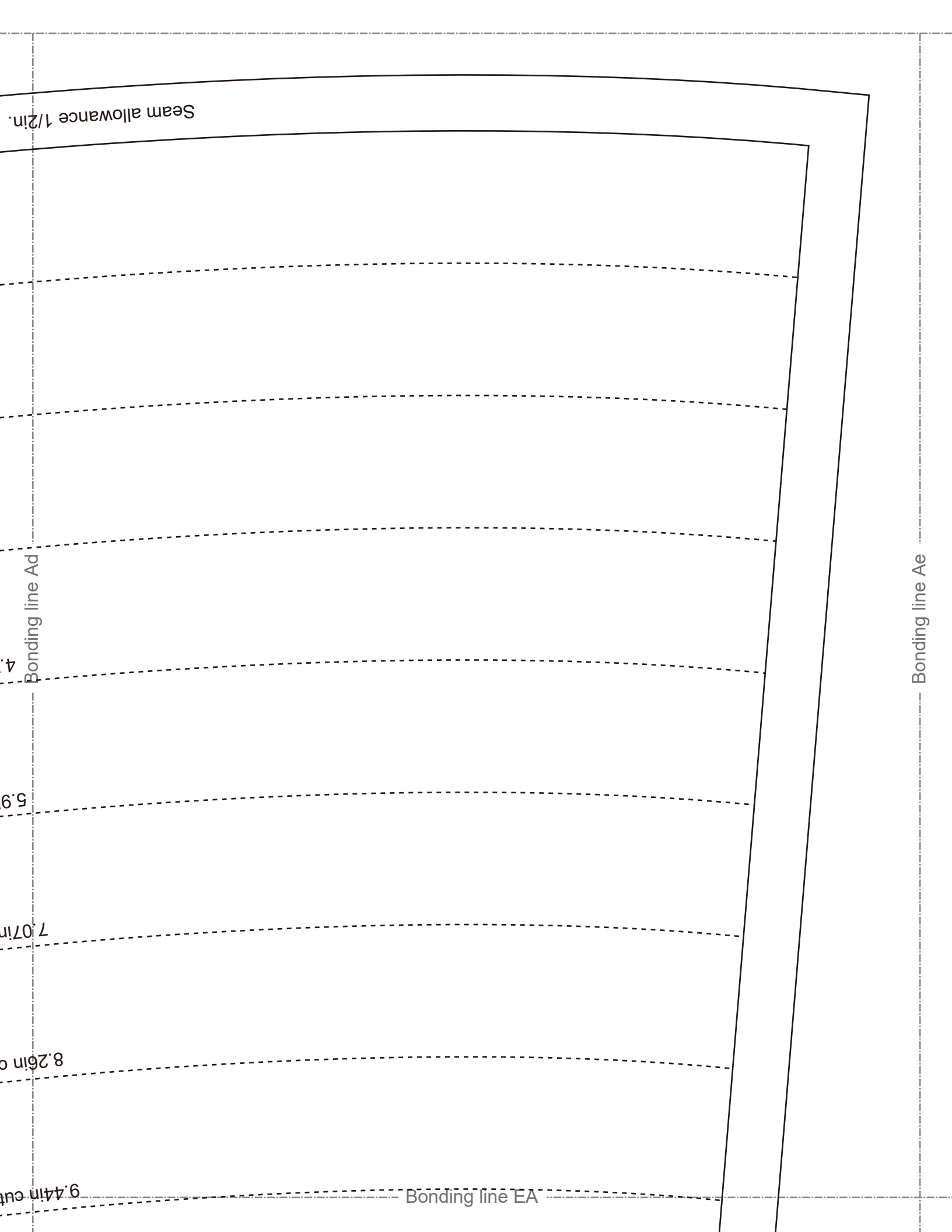
**DRCOS**

SITE [http://dr-cos.info\(en\)](http://dr-cos.info(en)) [http://dr-cos.com\(jp\)](http://dr-cos.com(jp))  
MAIL [info@dr-cos.com](mailto:info@dr-cos.com)  
Twitter [https://twitter.com/drcos\\_com](https://twitter.com/drcos_com)  
facebook <https://www.facebook.com/drcoscom>

9.44in cutline Bonding line DC







9.74 in cut

Bonding line EA



Bonding line Bd

Baste



Fastener

Bonding line Be

BACK OF  
two sheets

Bonding line EB

Princess Dress  
Back body  
two sheets

Bonding line EB

Fusible Stay tape

Bonding line Cd



Bonding line EC

Bonding line Ce

Bonding line EC

Facing Line

**DRCOS**  
 SITE <http://dr-cos.info/en> <http://dr-cos.com/jp>  
 MAIL [info@dr-cos.com](mailto:info@dr-cos.com)  
 TWITTER [https://twitter.com/dr-cos\\_com](https://twitter.com/dr-cos_com)  
 FACEBOOK <https://www.facebook.com/drcoscom>

Bonding line Dd

Bonding line De

Dress  
 Facing one sheets  
 Determining one sheets

Bonding line EC

Bonding line Ed

Bonding line Ed

Princess  
Front Facing  
Fusible interlin

LADIES'S  
size

Grain Line

Seam allowance 1/2in.

Bonding line EE

Bonding line Ee

**COS**  
com  
com  
w.facebook.com/drcoscom

Bonding line Fd

Bonding line EE

**DRCO**  
SITE <http://dr-cos.info/en> <http://dr-co>  
MAIL [info@dr-cos.com](mailto:info@dr-cos.com)  
Twitter [https://twitter.com/dr-cos\\_com](https://twitter.com/dr-cos_com)  
facebook <https://www.facebook.com/d>

Seam allowance 1/2in.

**Princess Dress**  
**Back Facing two sheets**  
**Fusible interlining two sheets**

Grain Line

Bonding line EF

Bonding line Fe