

Facing Line



Grain Line

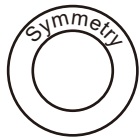
Bonding line AA

Bonding line Aa

Bonding line AA

Bonding line Ba

Princess Dress
Front body
one sheets



Bonding line AB

Bonding line AB



LADIES' size M

Bonding line Ca

Bonding line AC

Bonding line AC

9.44in cutline

8.26in cutline

7.07in cutline

5.9in cutline

4.72in cutline

3.54in cutline

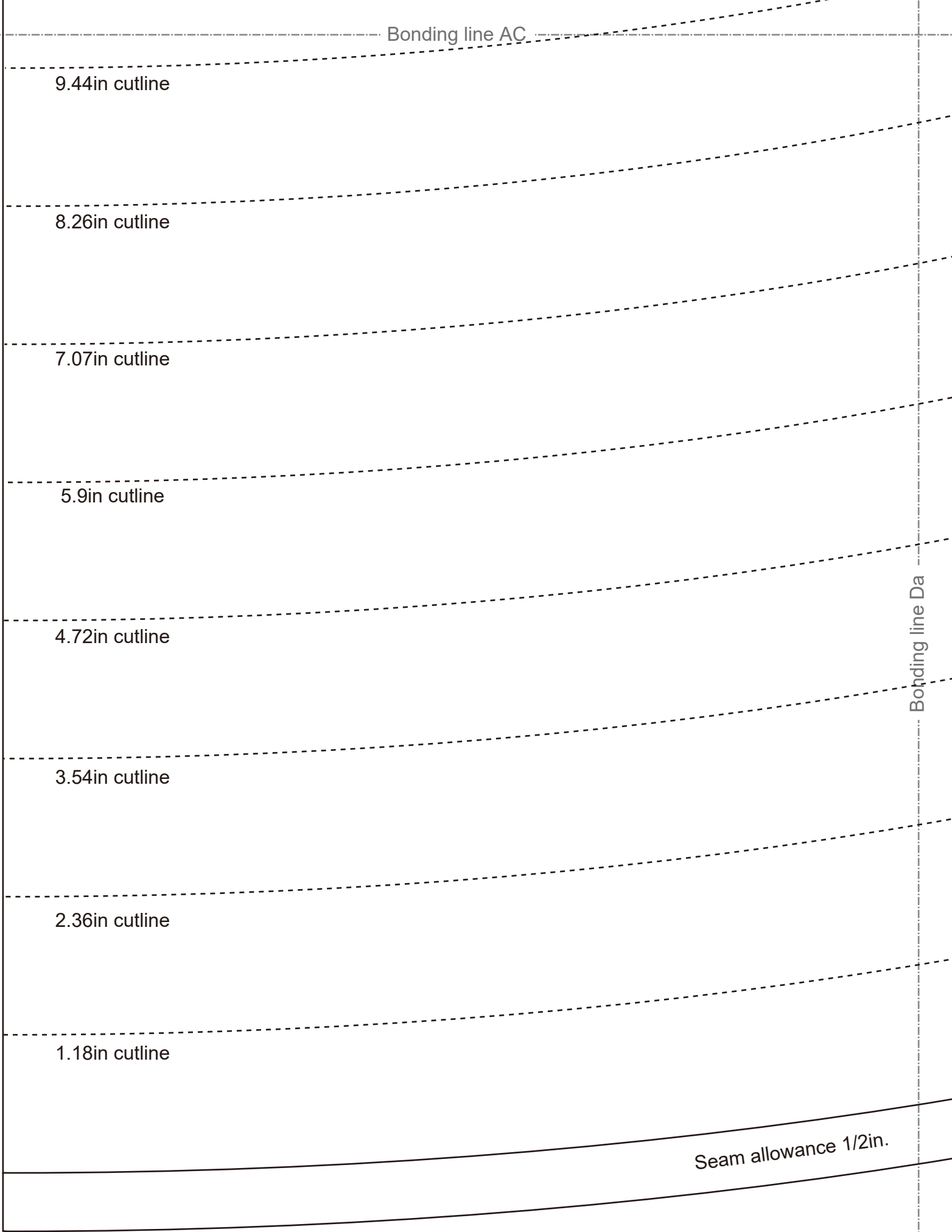
2.36in cutline

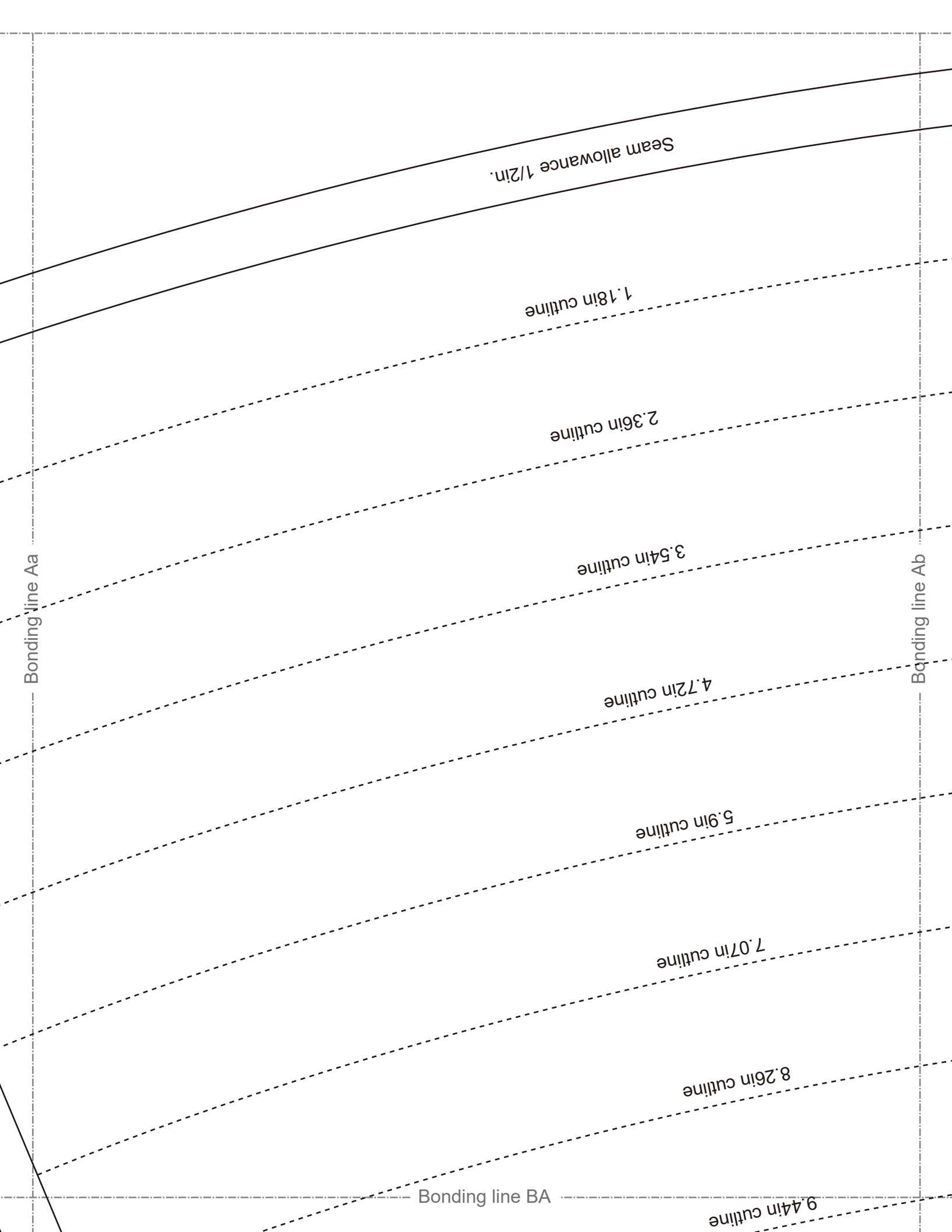
1.18in cutline

Seam allowance 1/2in.

Bonding line AD

Bonding line Da





Seam allowance 1/2 in.

1.18 in cutline

2.36 in cutline

3.54 in cutline

4.72 in cutline

5.9 in cutline

7.07 in cutline

8.26 in cutline

9.44 in cutline

Bonding line Aa

Bonding line Ab

Bonding line BA

Bonding line BA

9.44in cutline

[SITE http://dr-cos.info/en](http://dr-cos.info/en) <http://dr-cos.com/jp>
[MAIL info@dr-cos.com](mailto:info@dr-cos.com) [Twitter https://twitter.com/dr-cos](https://twitter.com/dr-cos) [facebook https://www.facebook.com/drcoscom](https://www.facebook.com/drcoscom)
DRCOS

Bonding line Ba

Bonding line Bb

size
W
DIES

Bonding line BB

Bonding line BB

Bonding line Ca

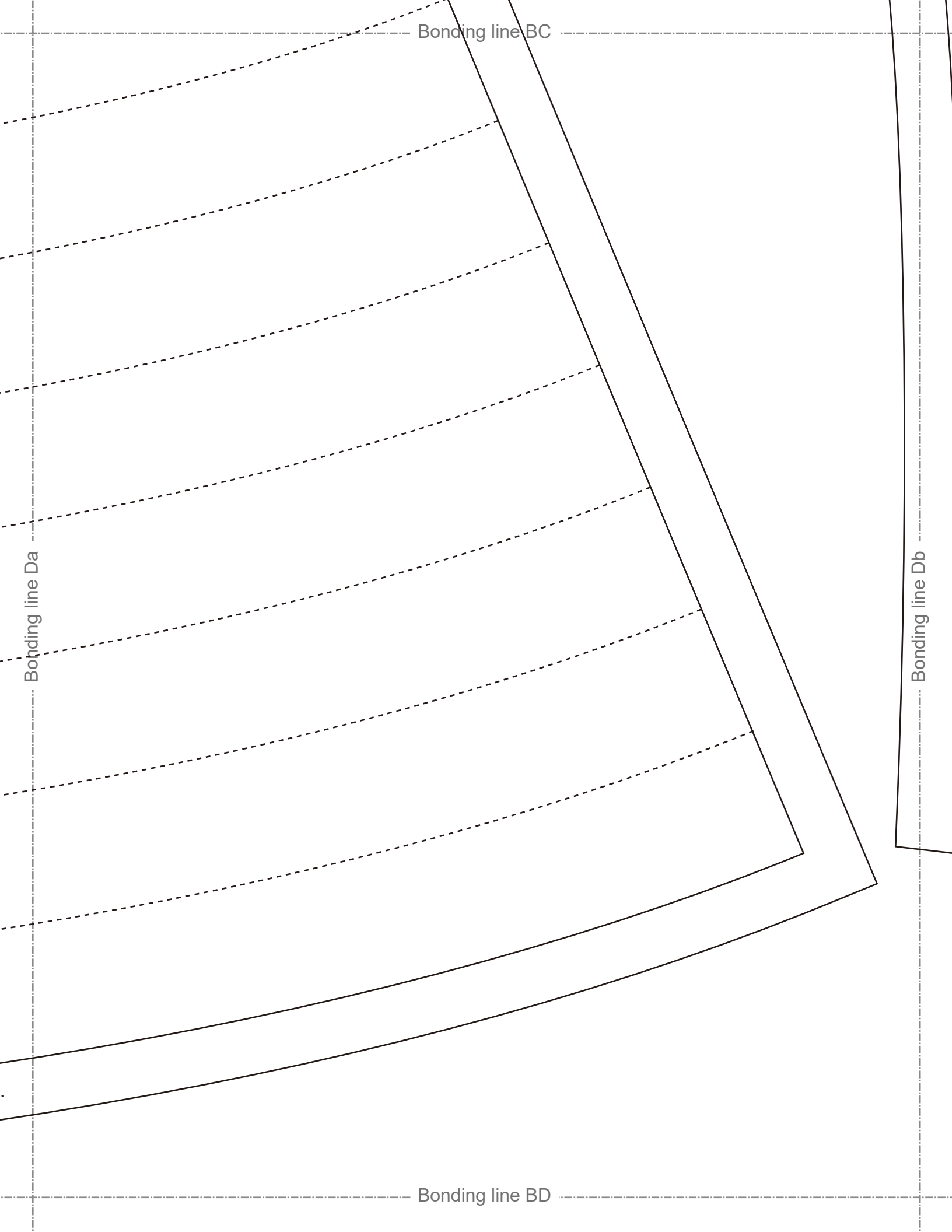
Bonding line Cb

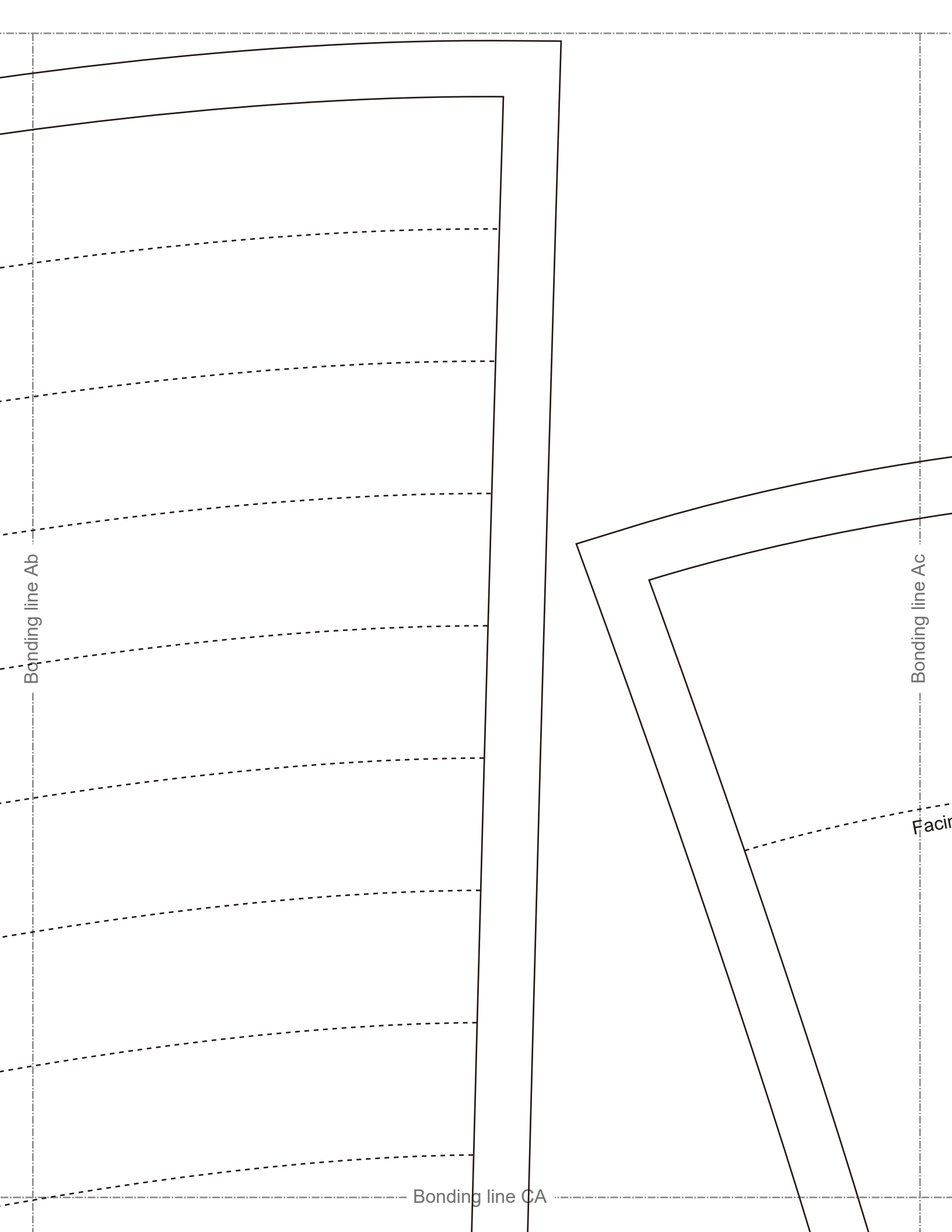
Press
from side
of sheets

DRCOS

SITE <http://dr-cos.info/en> <http://dr-cos.com/jp>
MAIL info@dr-cos.com
Twitter https://twitter.com/drcos_com
facebook <https://www.facebook.com/drcoscom>

Bonding line BC





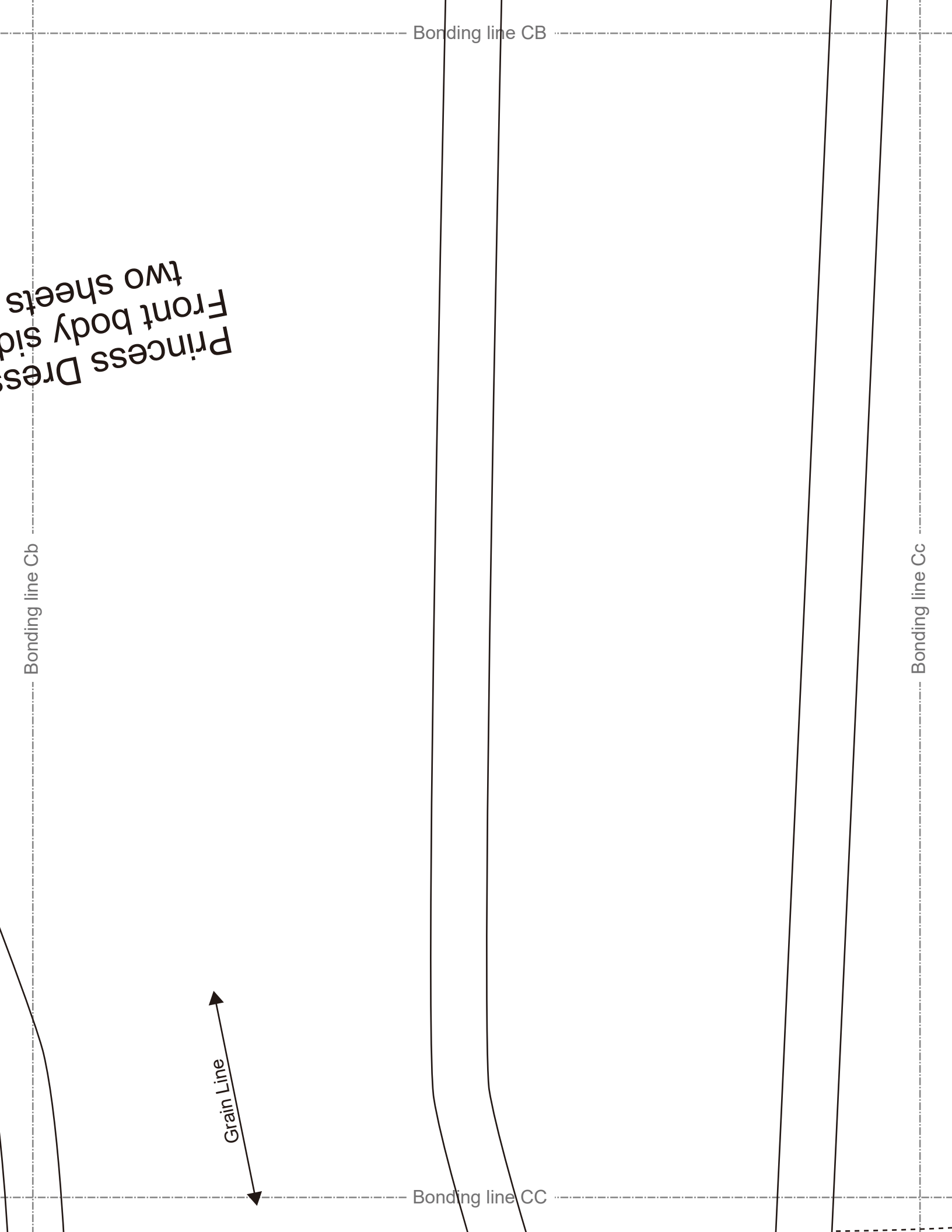
Bonding line CA

Bonding line Bb

Bonding line Bc

LADIA

Bonding line CB



Princess Dress
Front body side
two sheets

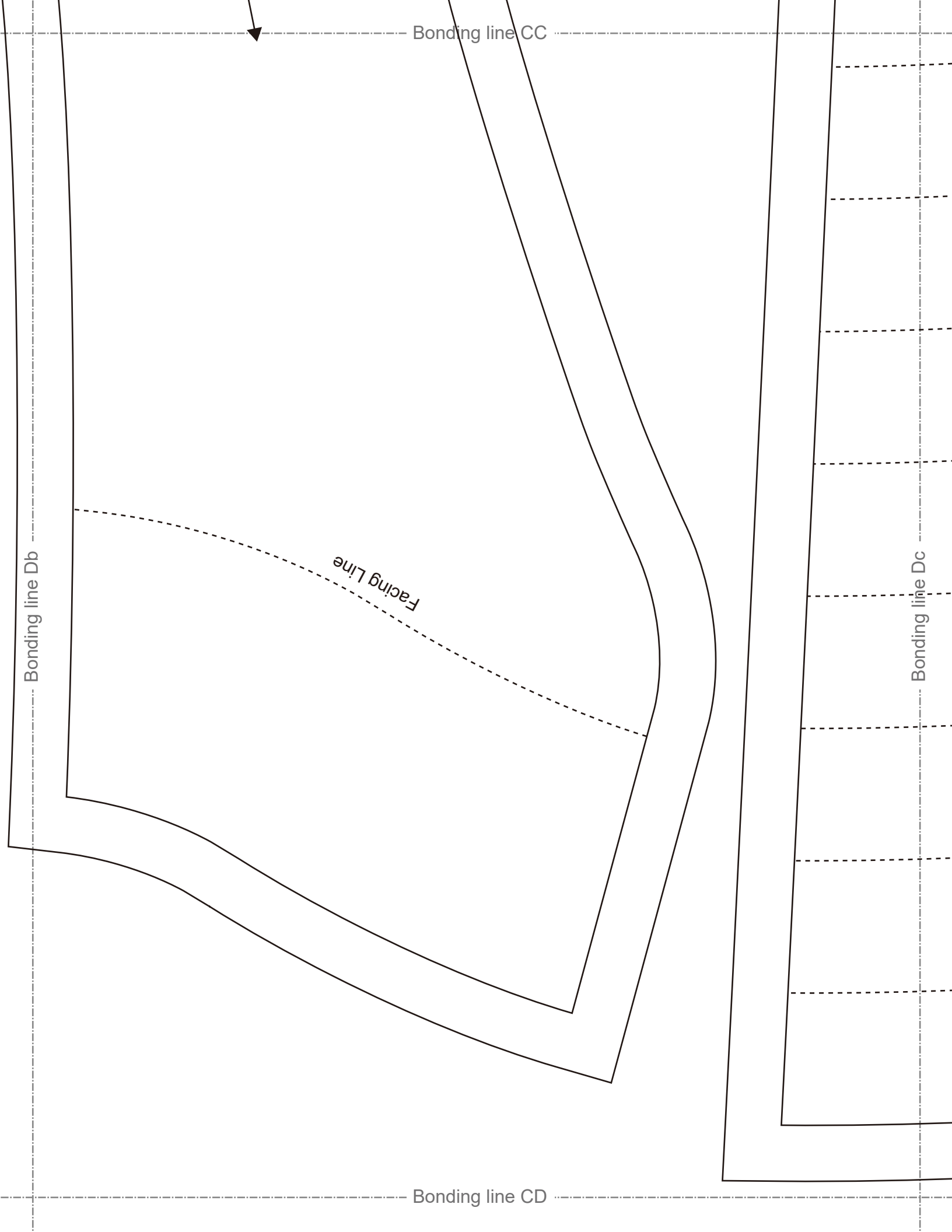
Bonding line Cb

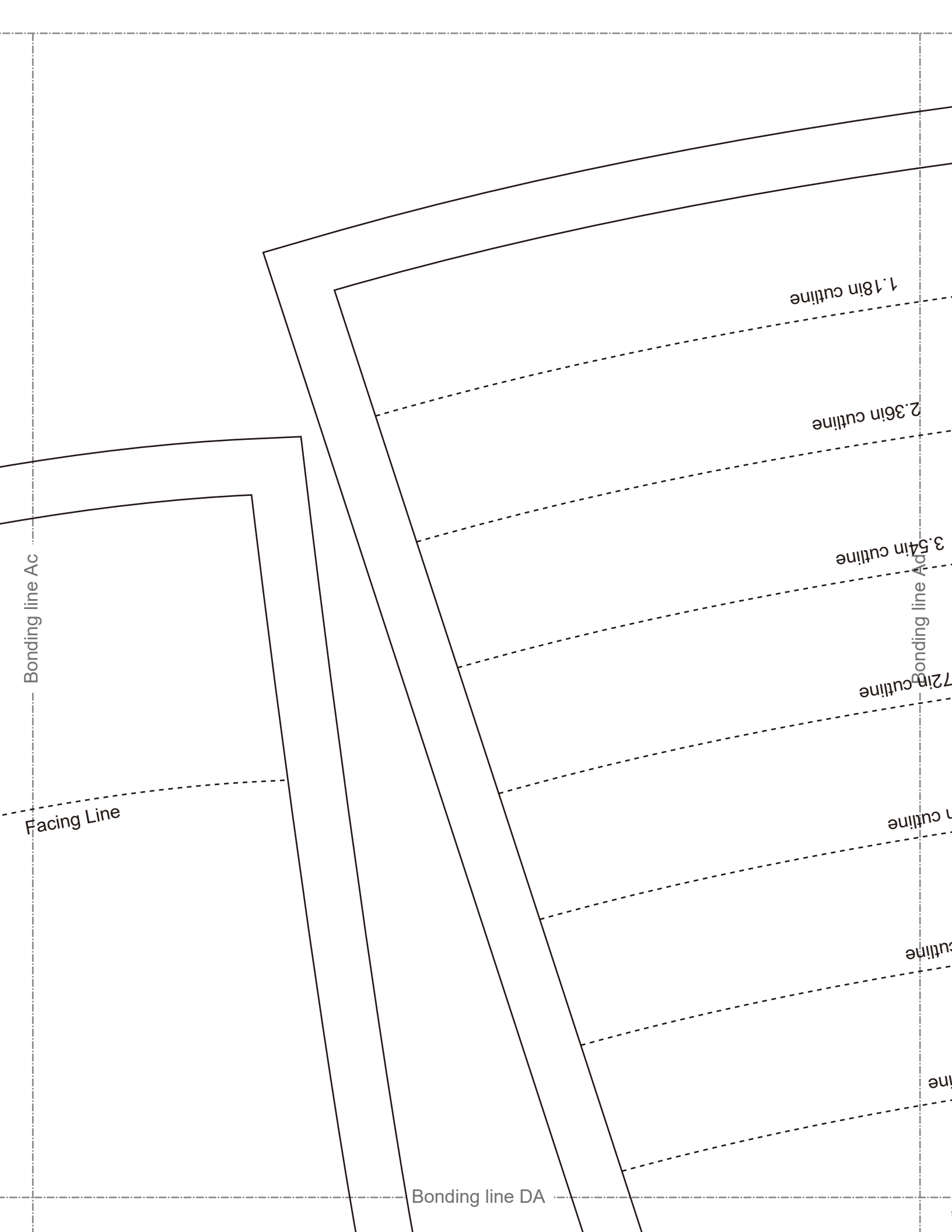
Bonding line CB

Bonding line Cc

Grain Line

Bonding line CC





Bonding line DA

Grain Line

Bonding line Bc

Bonding line Bd

**Princess Dress
Back body side
two sheets**

Bonding line DB

Bonding line DB

Bonding line Cc

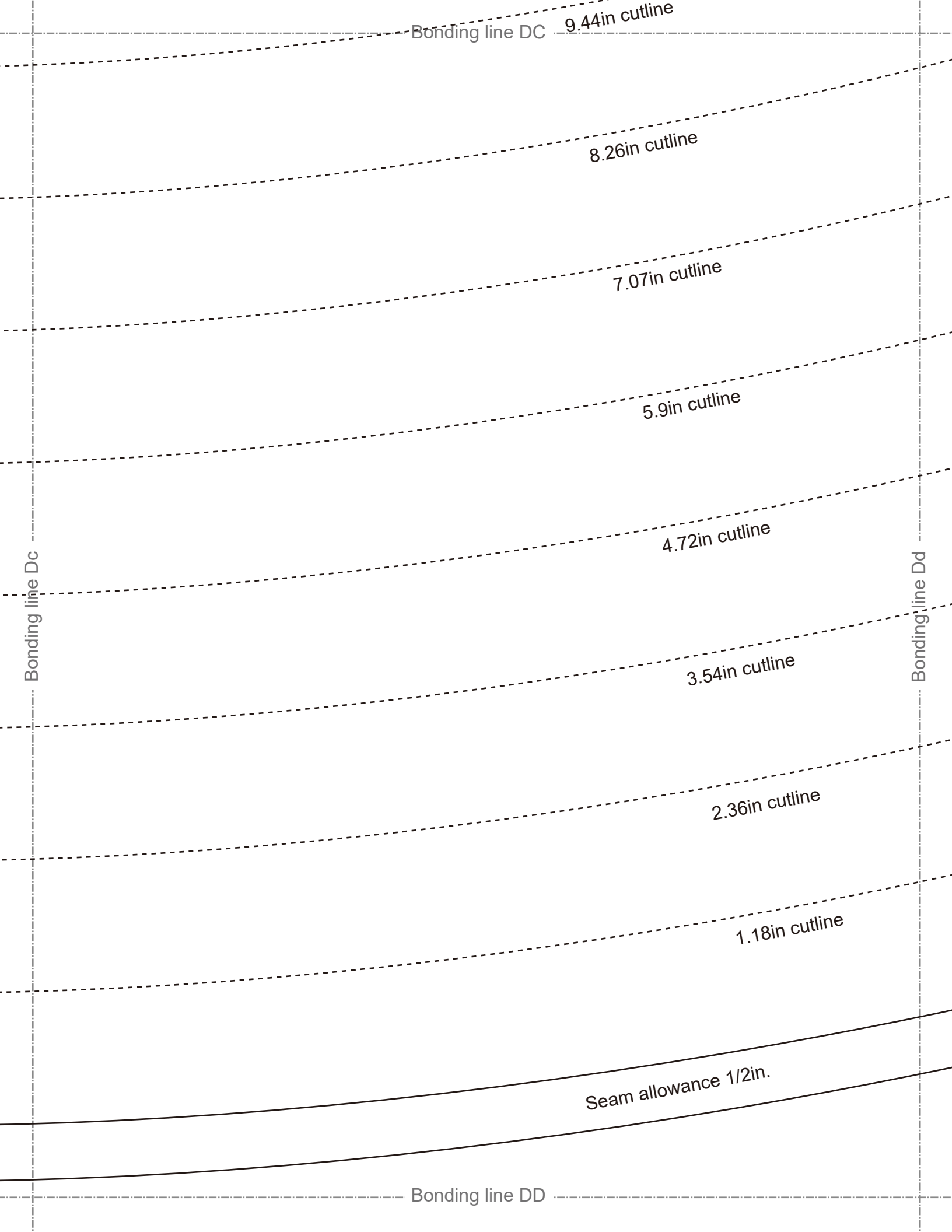
Bonding line Cd

LADIES' size M

DRCOS

SITE [http://dr-cos.info\(en\)](http://dr-cos.info(en)) <http://dr-cos.com>
MAIL info@dr-cos.com
Twitter [@drcos_com](https://twitter.com/@drcos_com)
facebook <https://www.facebook.com/drcos>

Bonding line DC 9.44in cutline



Bonding line DC

9.44in cutline

8.26in cutline

7.07in cutline

5.9in cutline

4.72in cutline

3.54in cutline

2.36in cutline

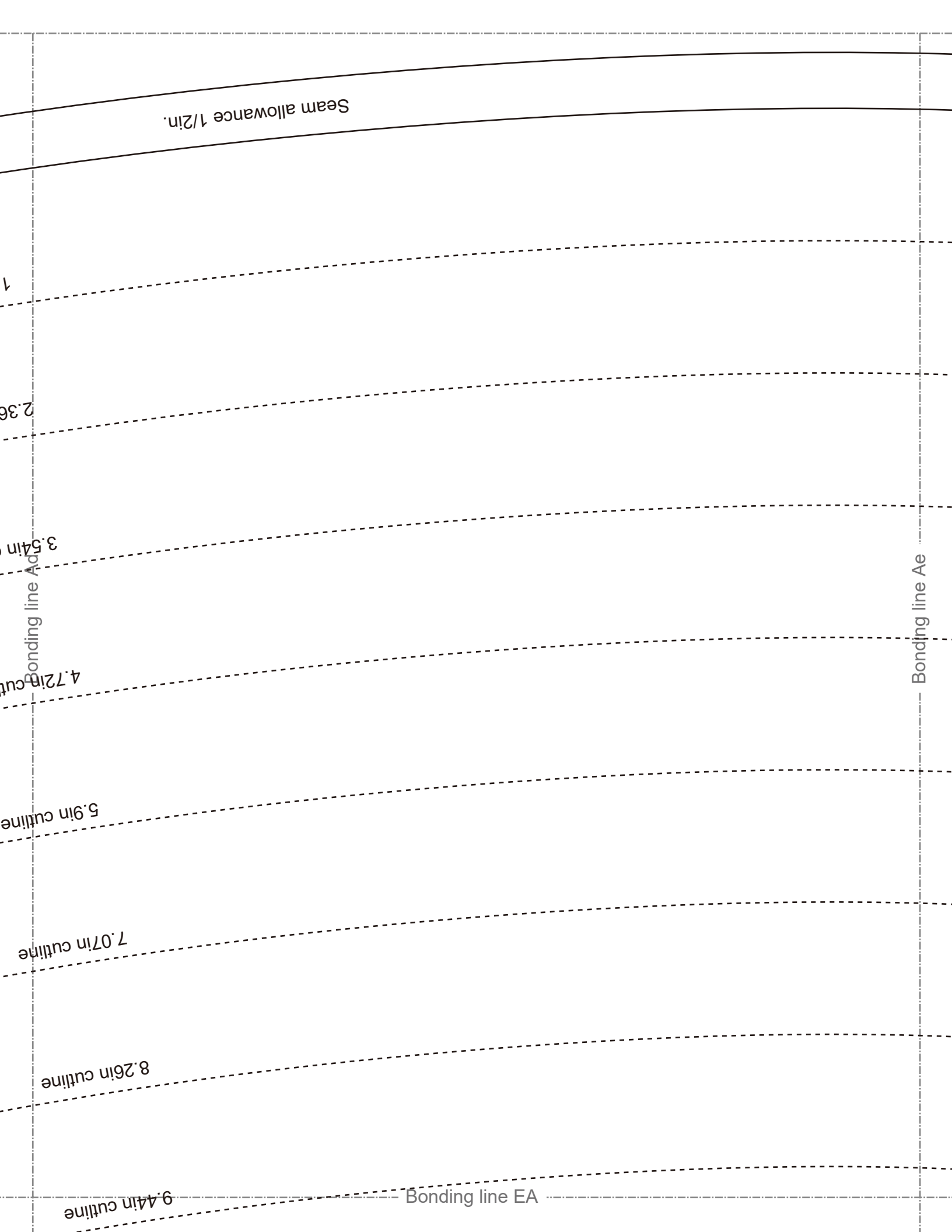
1.18in cutline

Seam allowance 1/2in.

Bonding line DD

Bonding line Dc

Bonding line Dd



9.44in outline

Bonding line EA

LADIES
size M

Bonding line Bd

Bonding line Be

Baste

Fastener end

Back of
two sheets

Bonding line EA

Princess Dress
Back body
two sheets

Bonding line EB

Fusible Stay tape

Grain Line

Bonding line Cd

Bonding line Ce

OS
http://dr-cos.com(jp)
n@drcos.com
facebook.com/drcoscom

Bonding line EC

Bonding line EC

Facing Line

Bonding line Dd

Bonding line Dd

SITE <http://drcos.int/en> <http://drcos.com/p>
MAIL info@drcos.com
Twitter https://twitter.com/drcos_com
facebook <https://www.facebook.com/drcoscom>

DRCOS

Bonding line ED



Bonding line Ae

Bonding line FA

Bonding line Af

Bonding line Be

Bonding line FA

Princess Dress
Back Facing two sheets
Fusible interlining two sheets

Seam allowance 1/2in.

Grain Line

Bonding line Bf

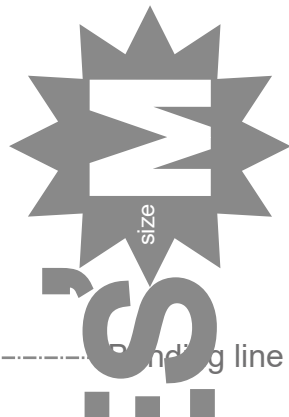
Bonding line FB

Bonding line FB

Bonding line Ce

Bonding line Cf

Princess Dress
Front Facing one sheets
Fusible interlining one sheets



Bonding line FC

allowance 1/2in.

Bonding line FC

LADIES

Seam allowance

Grain Line

Bonding line Dc

Bonding line Df

Bonding line FD

DRCOS

SITE <http://dr-cos.info/en> <http://dr-cos.com/jp>
MAIL info@dr-cos.com
Twitter [@drcos_com](https://twitter.com/@drcos_com)
facebook <https://www.facebook.com/drcoscom>