

Bonding line Aa

7.08in outline

6.29in outline

5.51in outline

4.72in outline

3.93in outline

3.14in outline

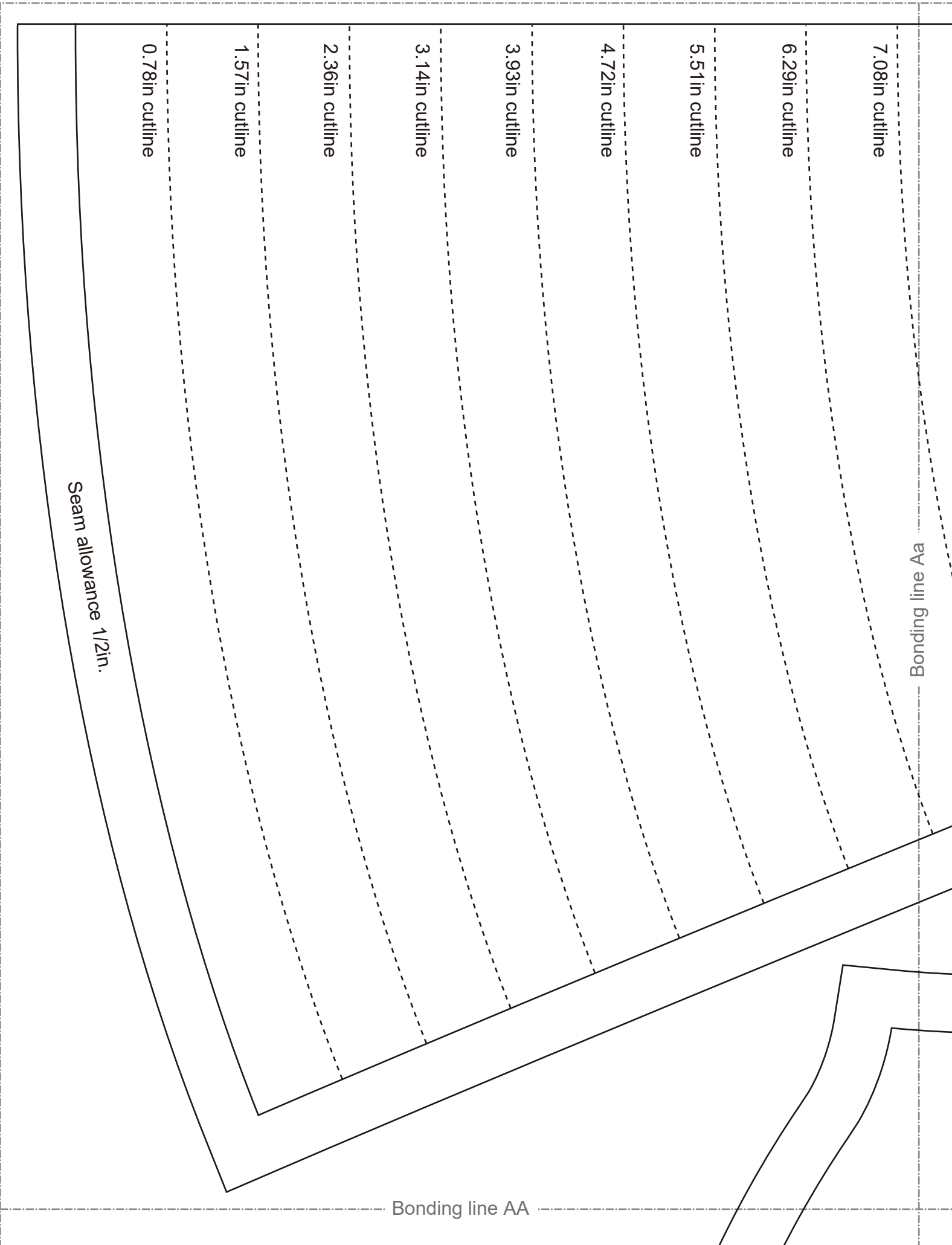
2.36in outline

1.57in outline

0.78in outline

Seam allowance 1/2in.

Bonding line AA



Bonding line AA

Bonding line Ba

7.08in outline

6.29in outline

5.51in outline

4.72in outline

3.93in outline

3.14in outline

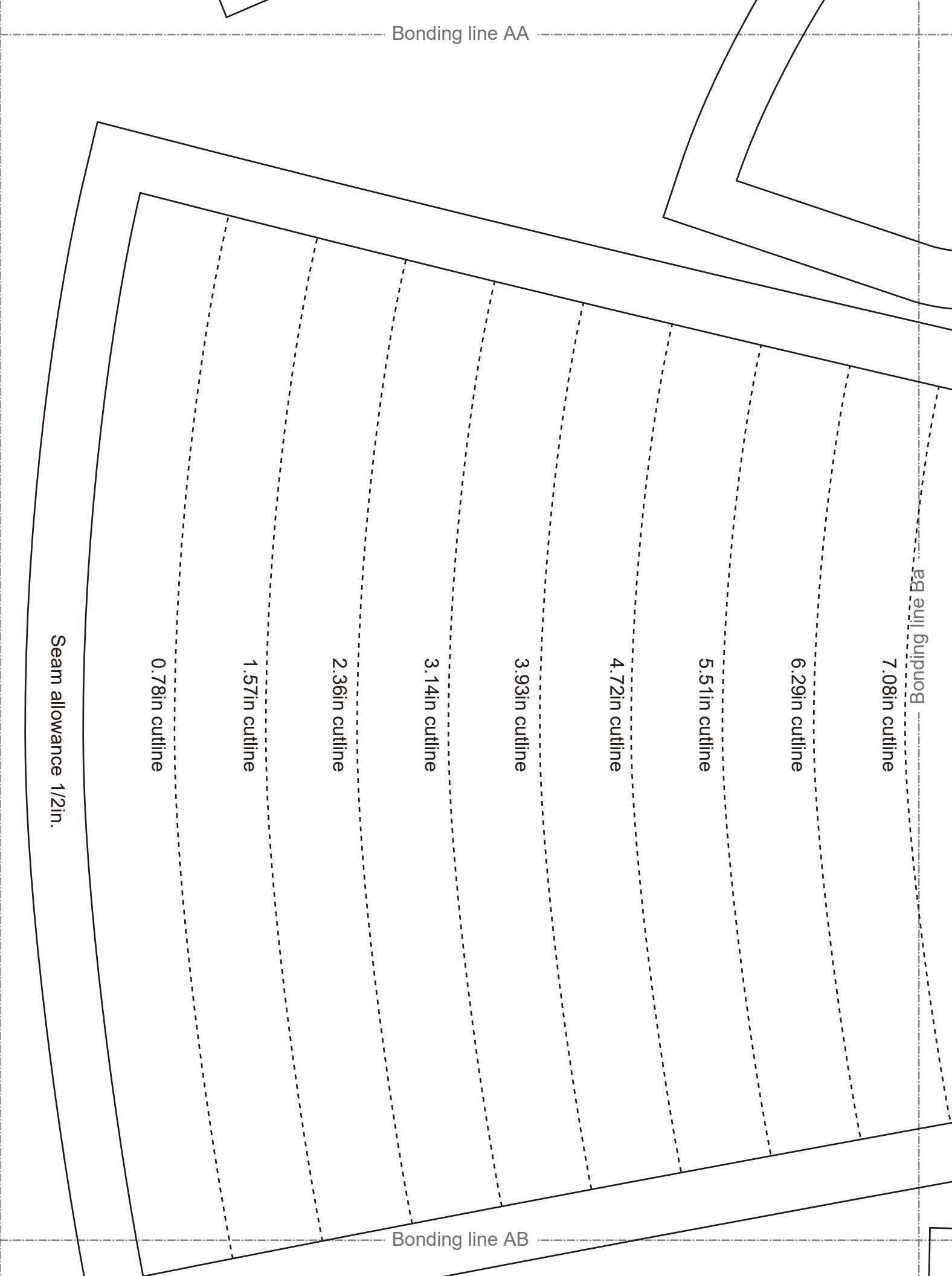
2.36in outline

1.57in outline

0.78in outline

Seam allowance 1/2in.

Bonding line AB



Bonding line AB

Bonding line Ca

Grain Line

Princ
Front Faci
Fusible interl

DRCOS
SITE [http://dr-cos.info\(en\)](http://dr-cos.info(en)) [http://dr-cos.com\(jp\)](http://dr-cos.com(jp))
MAIL info@dr-cos.com
Twitter [@drcos_com](https://twitter.com/@drcos_com)
facebook <https://www.facebook.com/drcoscom>

Seam allowance 1/2in

Bonding line AC

Children's

Princess Dress
Front body
one sheets



Bonding line Ab

Bonding line Aa

DRCOS
SITE <http://drcos.info/en> | <http://drcos.com/jp>
MAIL info@drcos.com
Twitter https://twitter.com/drcos_com
facebook <https://www.facebook.com/drcoscom>

Grain Line
Bonding line BA

Line

Bonding line BA

Facing Line

Bonding line Bb



Children's

Princess Dress
Back body side
two sheets

Bonding line Ba

7.08in cutline

Bonding line BB

Stay tape

DRCOS

SITE <http://dr-cos.info/en> <http://dr-cos.com/tp>
MAIL info@dr-cos.com
Twitter [@drcos_com](https://twitter.com/@drcos_com)
facebook <https://www.facebook.com/drcos.com>

Bonding line BB

Stay tape

DRCOS

SITE <http://dr-cos.info/en> <http://dr-cos.com/jp>
MAIL info@dr-cos.com
Twitter https://twitter.com/drcos_com
facebook <https://www.facebook.com/drcos.com>

Facing Line

Grain Line

Bonding line Ca

Bonding line Cb

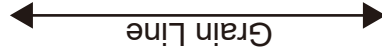
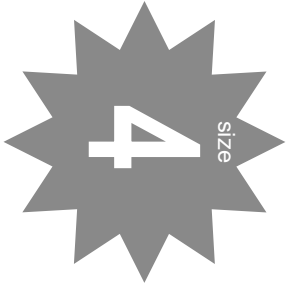
Princess Dress
Facing one sheets
interlining one sheets

nce 1/2in.



Bonding line BC

Bonding line Ab



Facing Line

Bonding line Ac



Children's

Princess Dress
Front body side
two sheets

Bonding line CA



7.08in outline

ch

P E
Bonding line CA

Bonding line Bb

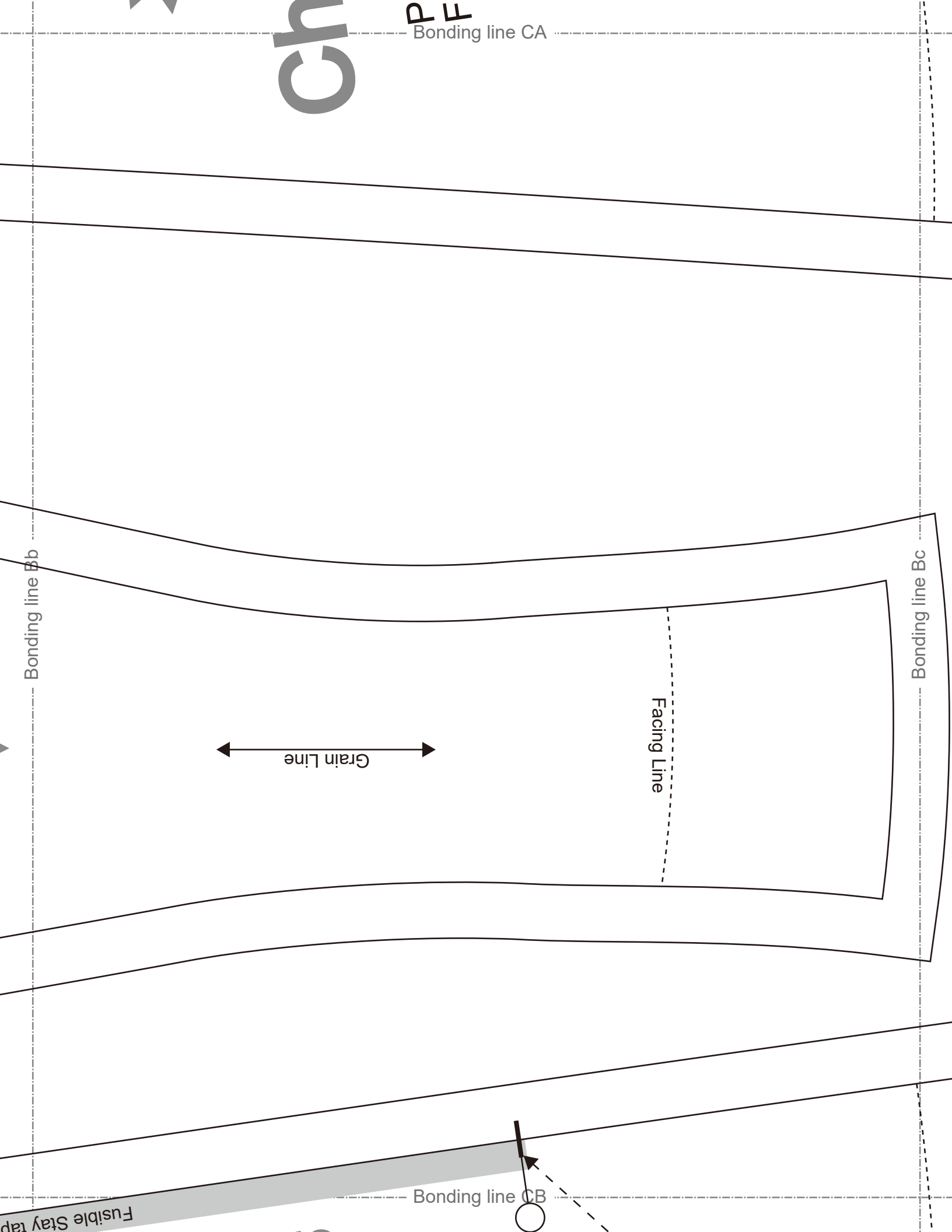
Bonding line Bc

Grain Line

Facing Line

Bonding line CB

Fusible Stay tap



Fusible Stay tap

Bonding line CB

Fastener end

Baste



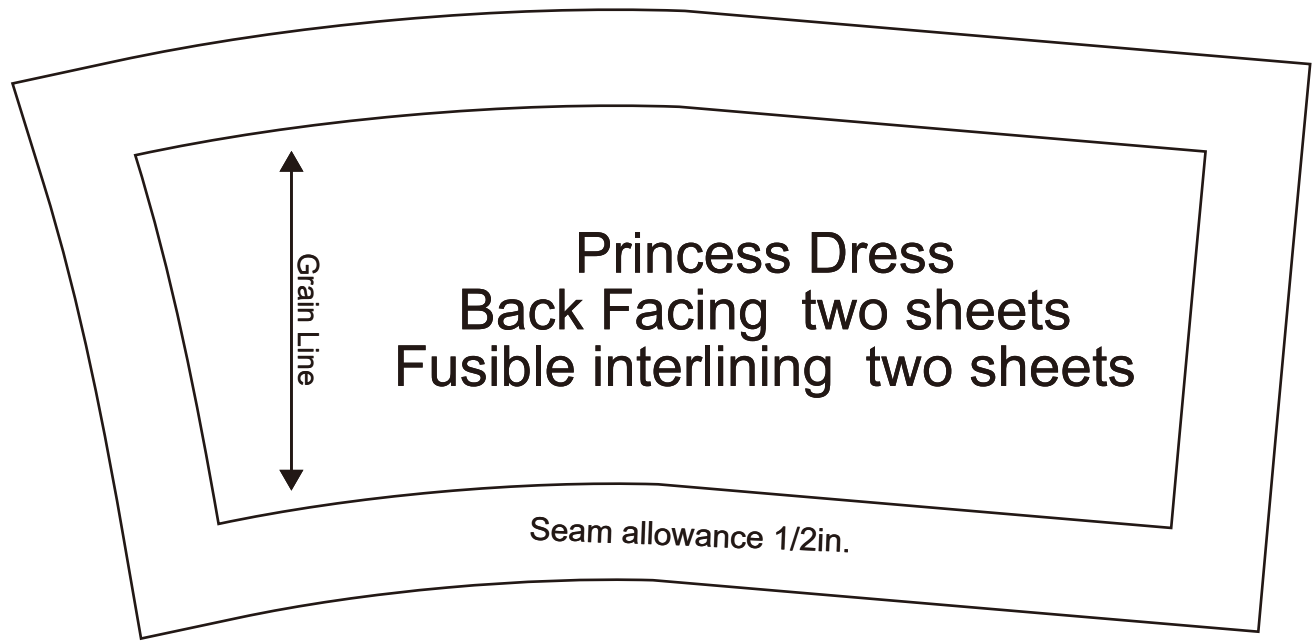
Children's

Princess Dress
Back body
two sheets

Bonding line Cb

Bonding line Cc

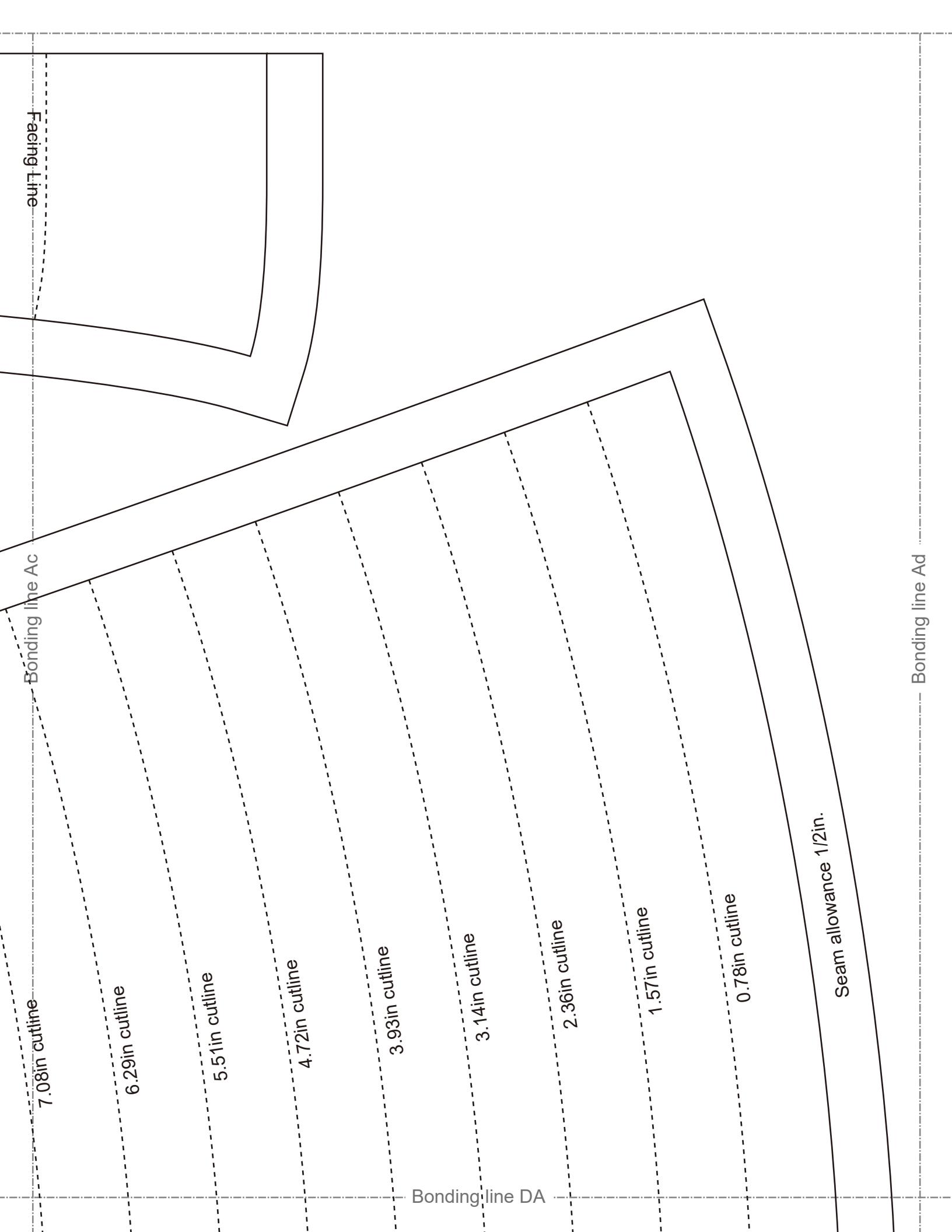
7.08in outline



Princess Dress
Back Facing two sheets
Fusible interlining two sheets

Seam allowance 1/2in.

Bonding line CC



Facing Line

Bonding line Ac

7.08in outline

6.29in outline

5.51in outline

4.72in outline

3.93in outline

3.14in outline

2.36in outline

1.57in outline

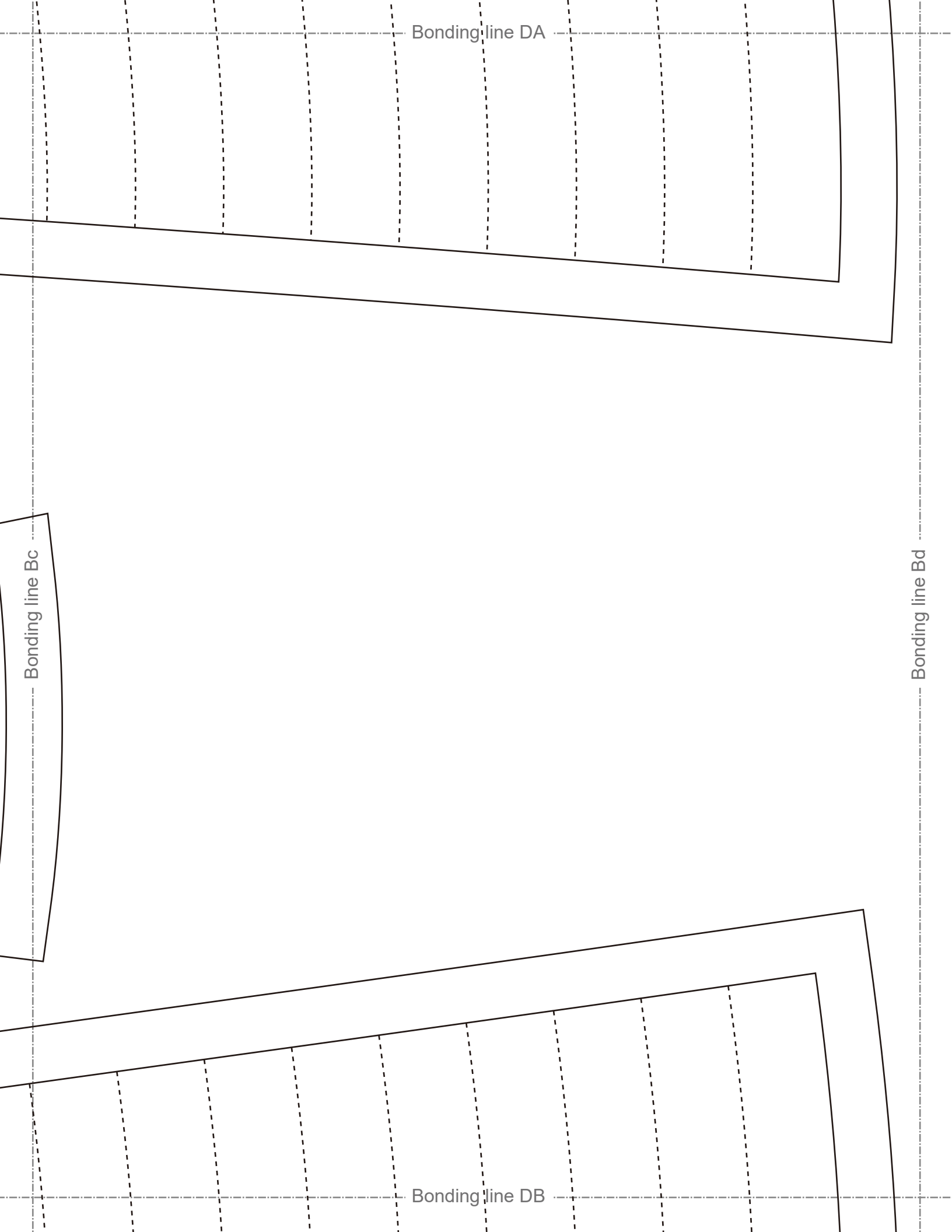
0.78in outline

Seam allowance 1/2in.

Bonding line DA

Bonding line Ad

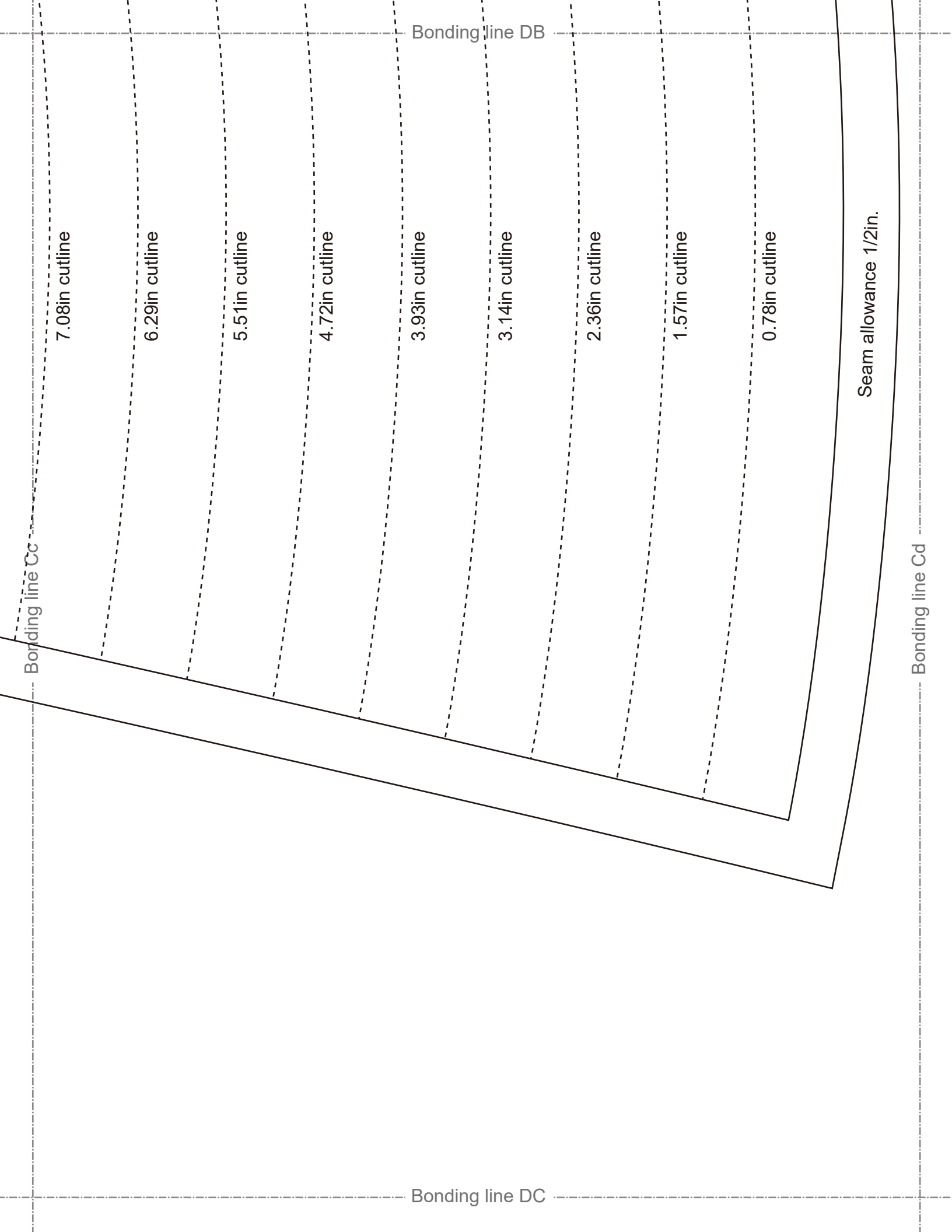
Bonding line DA



Bonding line Bc

Bonding line Bd

Bonding line DB



Bonding line Cc

7.08in cutline

6.29in cutline

5.51in cutline

4.72in cutline

3.93in cutline

3.14in cutline

2.36in cutline

1.57in cutline

0.78in cutline

Bonding line DB

Bonding line DC

Bonding line Cd

Seam allowance 1/2in.