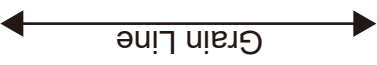


Children's ^{size} 4

Bonding line Aa



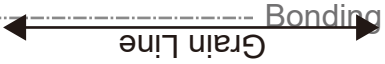
Seam allowance 1/2in.

Children's



Pin Two front two str

Bonding line AA



Se

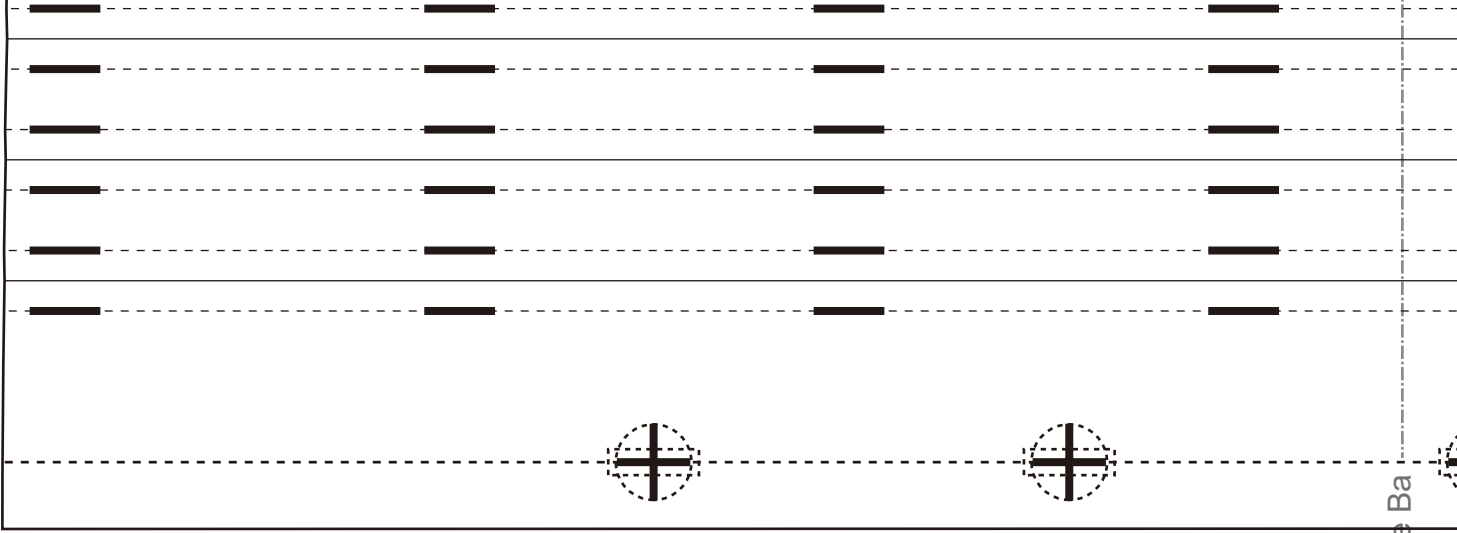
Children's

Tuck Shirt
front body
two sheets

Bonding line AA

Grain Line

Seam allowance 1/2in.



Bonding line Ba

Pin Tuck Shirt
facing two sheets
Fusible interlining two sheets

Grain Line

Seam allowance

Bonding line AB

Bonding line Ab

Facing Line

SITE <http://dr-cos.info/en> <http://dr-cos.com/jp>
MAIL info@dr-cos.com
Twitter https://twitter.com/dr-cos_com
facebook <https://www.facebook.com/drcoscom>

DRCOS

Pin Tuck Shirt
back body
one sheets



Symmetry

Bonding line Aa

Bonding line Ab

Facing

SITE <http://dr-cos.com/jp>
MAIL info@dr-cos.com
Twitter https://twitter.com/dr-cos_com
facebook <https://www.facebook.com/drcoscom>

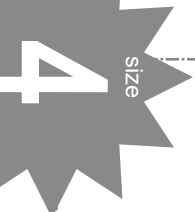
DR

Bonding

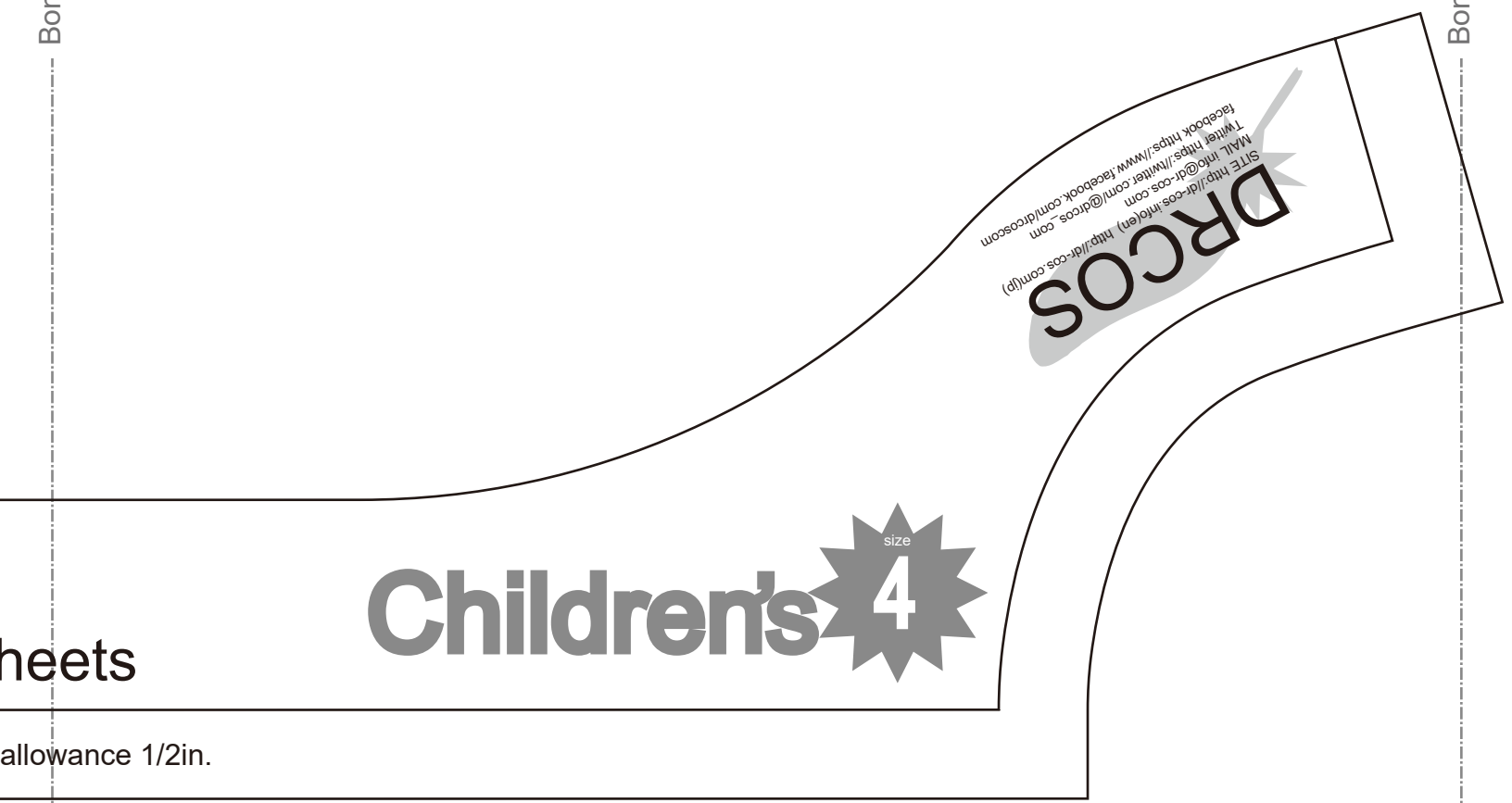
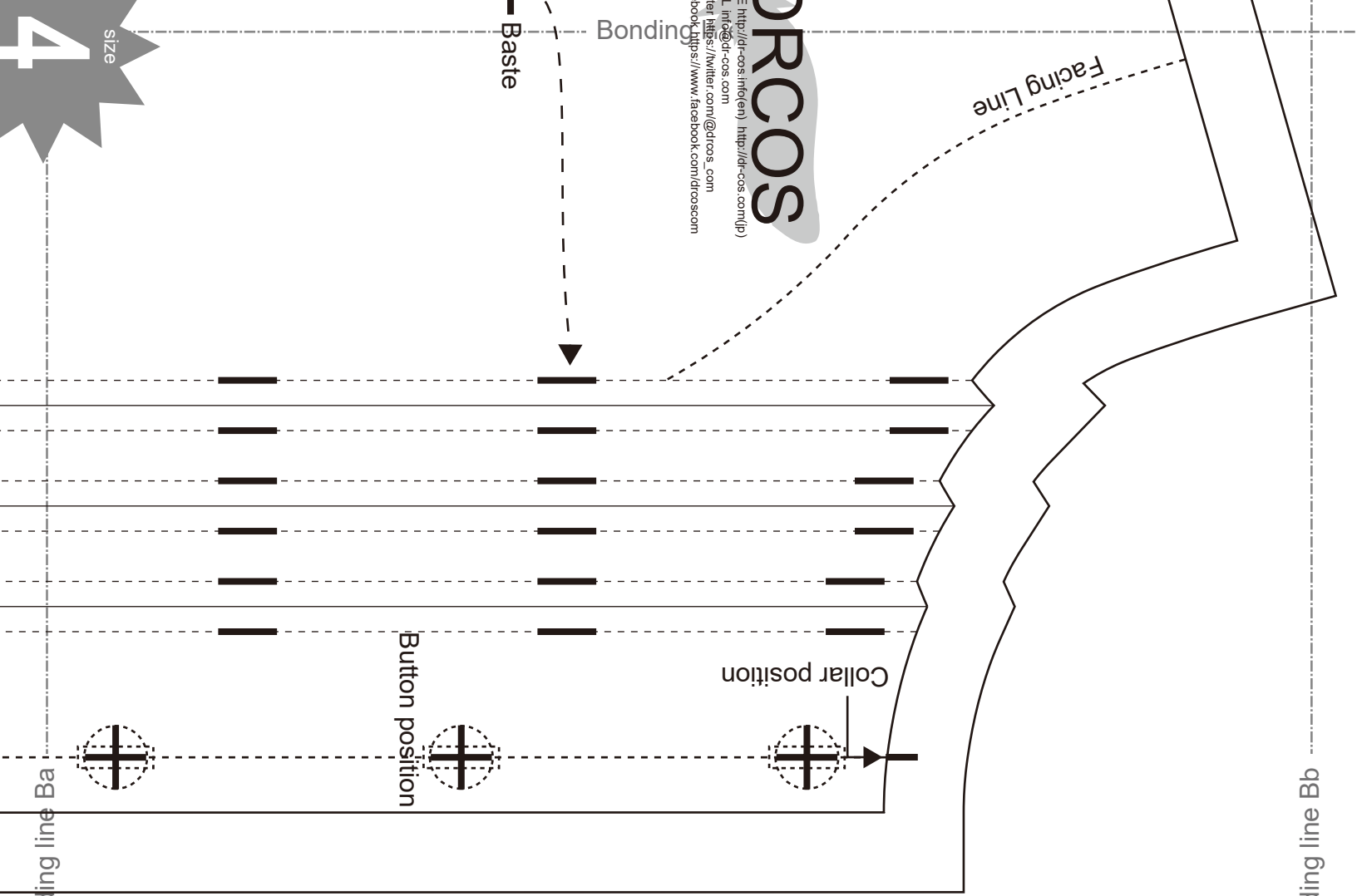
Bast

size

4



size



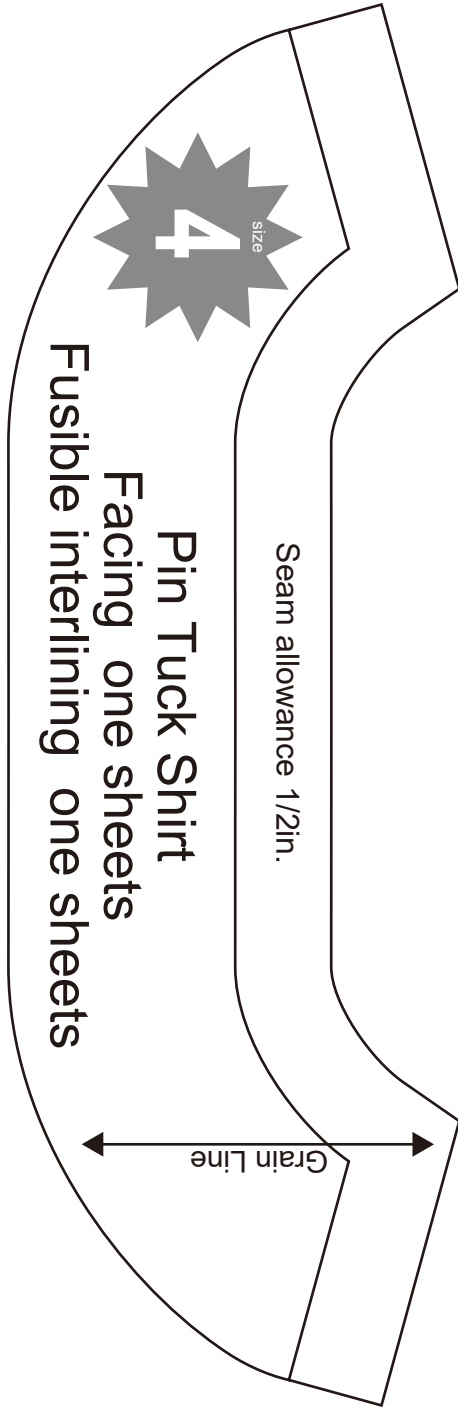
heets

Children's

allowance 1/2in.

Bonding line BB

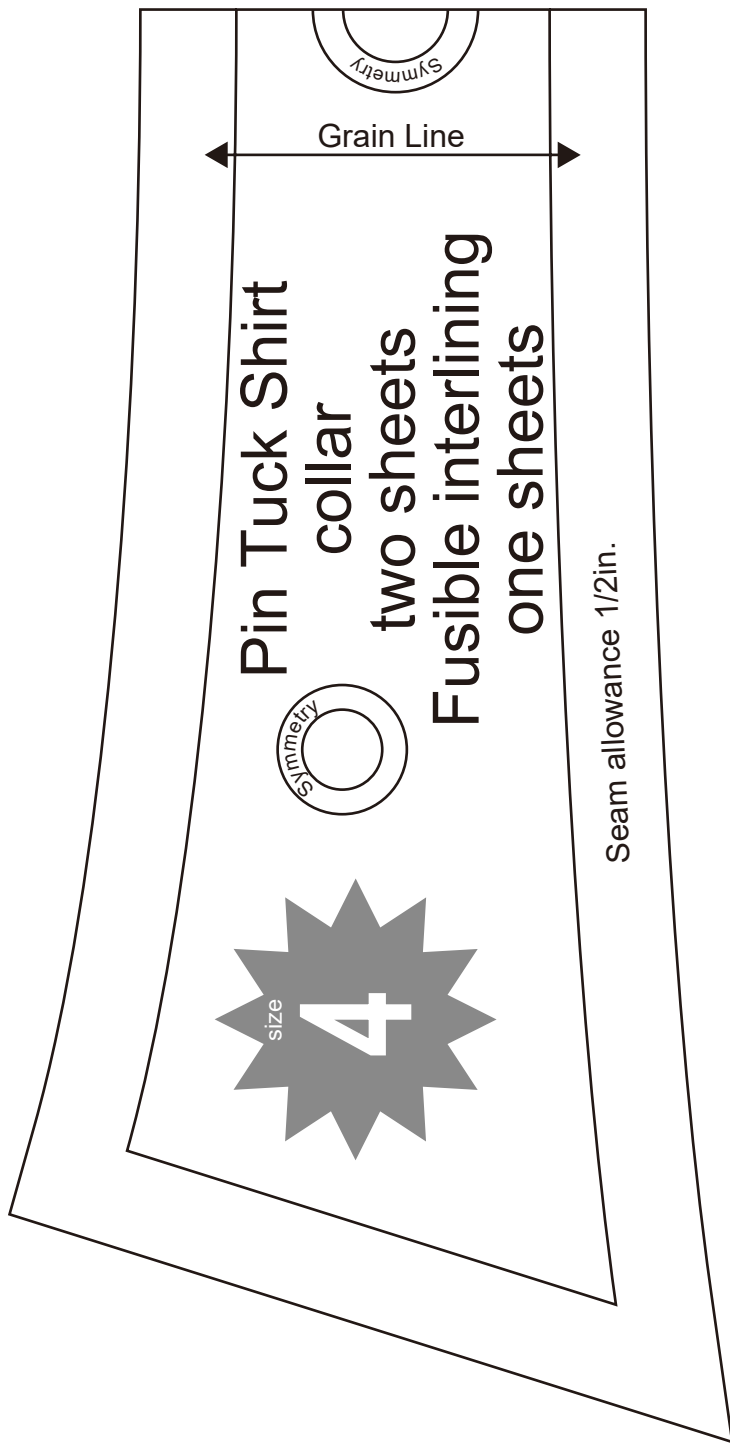
Bonding line Ab



Bonding line CA

Front

Bonding line Ac



DRCOS

SITE [http://dr-cos.info\(en\)](http://dr-cos.info(en)) [http://dr-cos.com\(jp\)](http://dr-cos.com(jp))
MAIL info@dr-cos.com
Twitter https://twitter.com/drcos_com
facebook <https://www.facebook.com/drcoscom>

Back

Children's

size

4

Pin Tuck Shirt
sleeve
two sheets

Bonding line DA

Gr

Bonding line Ac

Bonding line Ad

Bonding line DA

Grain Line

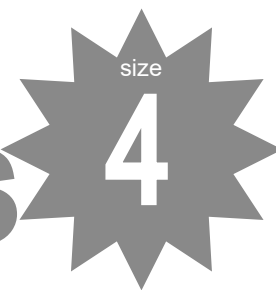


Seam allowance 1/2in.

Bonding line Bc

Bonding line Bd

Children's



size

4



Grain Line

Pin Tuck Shirt
Cuffs
two sheets
Fusible interlining
two sheets

Seam allowance 1/2in.

Bonding line DB