

Seam allowance 1/2in.

Bonding line Aa

Bonding line AA



Bonding line AA

# Children's 8

One Piece Dress  
Back body  
two sheets

Seam allowance 1/2in.

Bonding line AB



# Children's 8

One Piece Dress

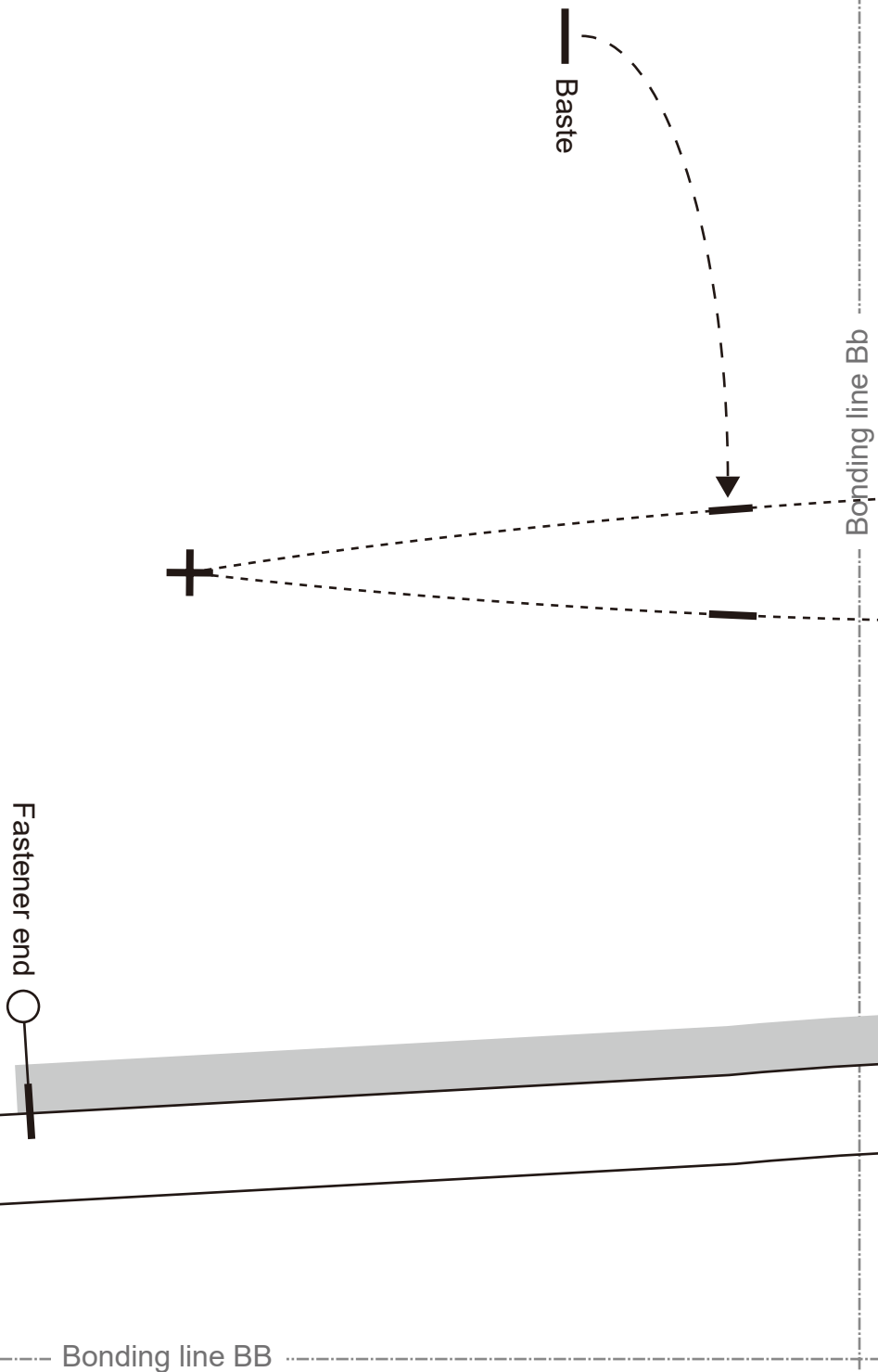
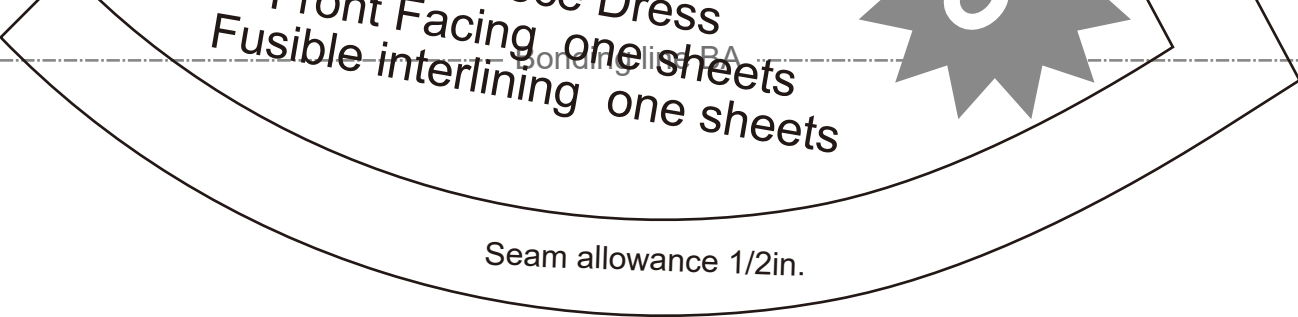
Front body  
one sheets

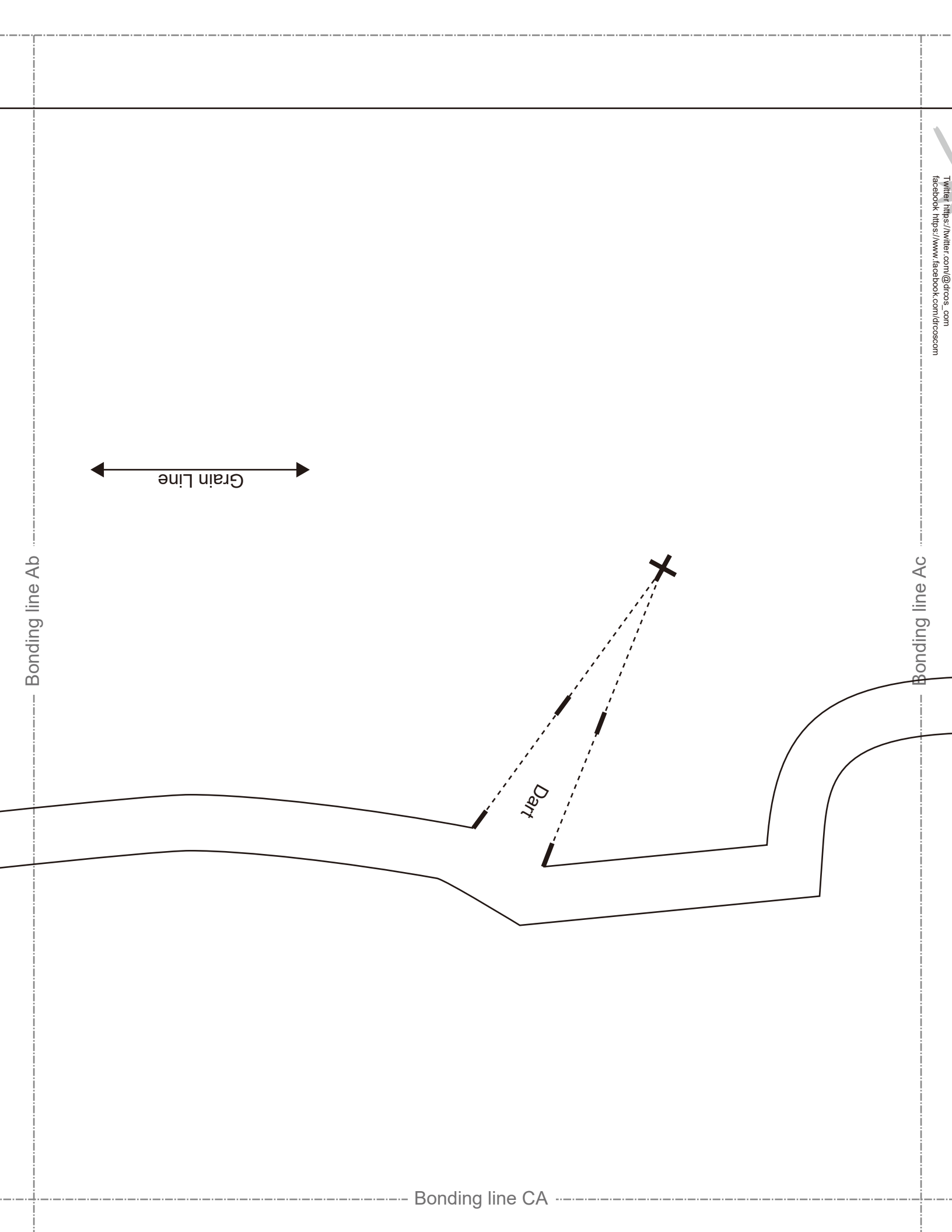


Bonding line Aa

Bonding line Ab







Bonding line Ab

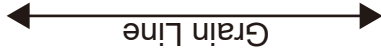
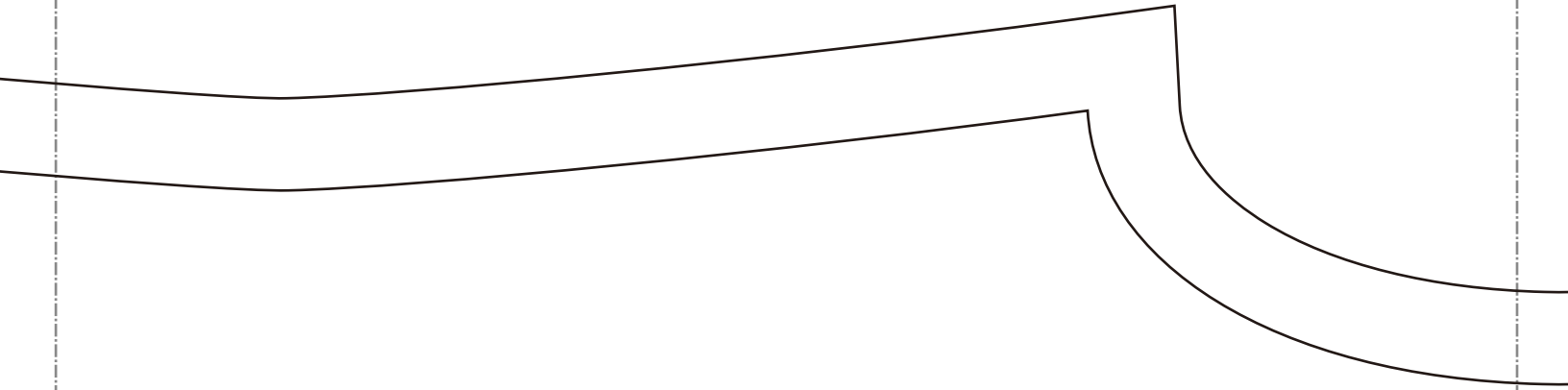
Grain Line

Dart

Bonding line CA

Bonding line Ac

Bonding line CA



Bonding line Bb



Bonding line Bc



Fusible Stay tape

Bonding line CB

**DRCOS**  
SITE <http://dr-cos.info/en> <http://dr-cos.com/jp>  
MAIL [info@dr-cos.com](mailto:info@dr-cos.com)  
Twitter [@dr-cos](https://twitter.com/dr-cos)  
facebook <https://www.facebook.com/drcoscom>

Facing Line

Front

Bonding line Ac

Bonding line Ad

Bonding line DA

Bonding line DA

C

Bonding line Bc

SITE <http://dr-cos.info/en>, <http://dr-cos.com/jp>  
MAIL [info@dr-cos.com](mailto:info@dr-cos.com)  
Twitter [https://twitter.com/dr-cos\\_com](https://twitter.com/dr-cos_com)  
facebook <https://www.facebook.com/dr-cos.com>

**DRCOS**

Facing Line

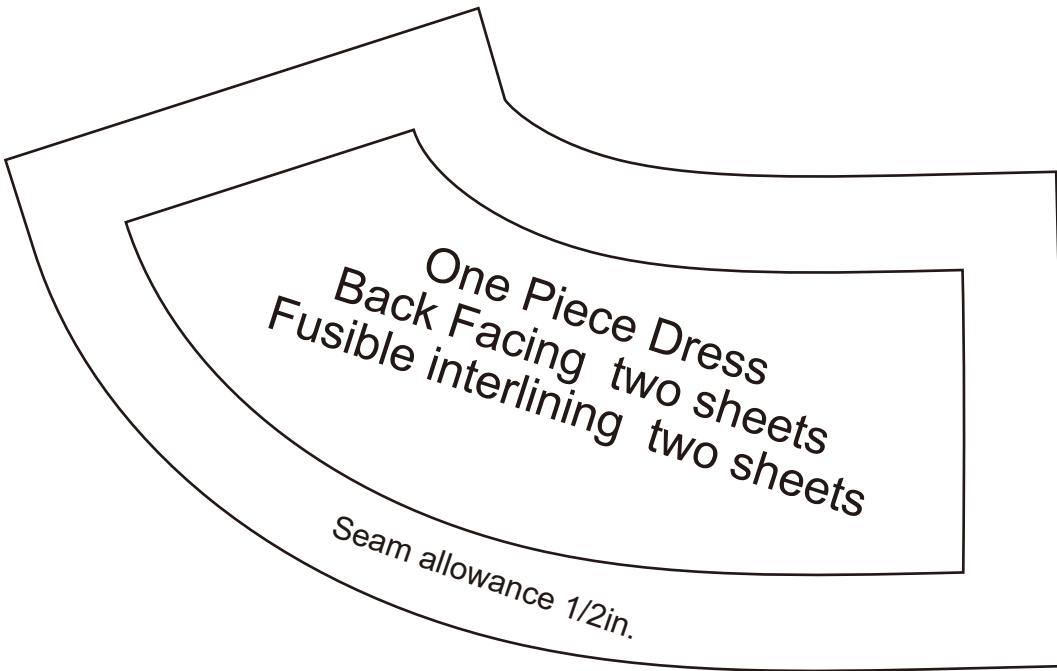
Bonding line Bd

Bonding line DB



Bonding line Ad

Bonding line Ae



# DRCOS

SITE <http://dr-cos.info/en> <http://dr-cos.com/jp>  
 MAIL [info@dr-cos.com](mailto:info@dr-cos.com)  
 Twitter [https://twitter.com/drcos\\_com](https://twitter.com/drcos_com)  
 facebook <https://www.facebook.com/drcoscom>

## Back



# Children's

Bo

size

Bo

8

# Children's

One Piece Dress  
Sleeve  
two sheets

Bonding line Bd



Bonding line Be

Seam allowance 1/2in.

Bonding line EB