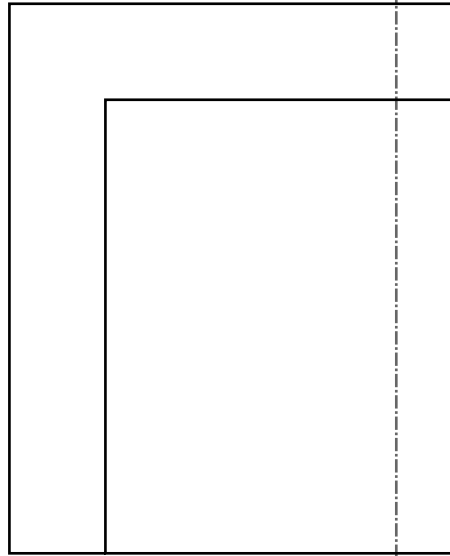


[Home](#)

[Back to Narrowcourt page](#)

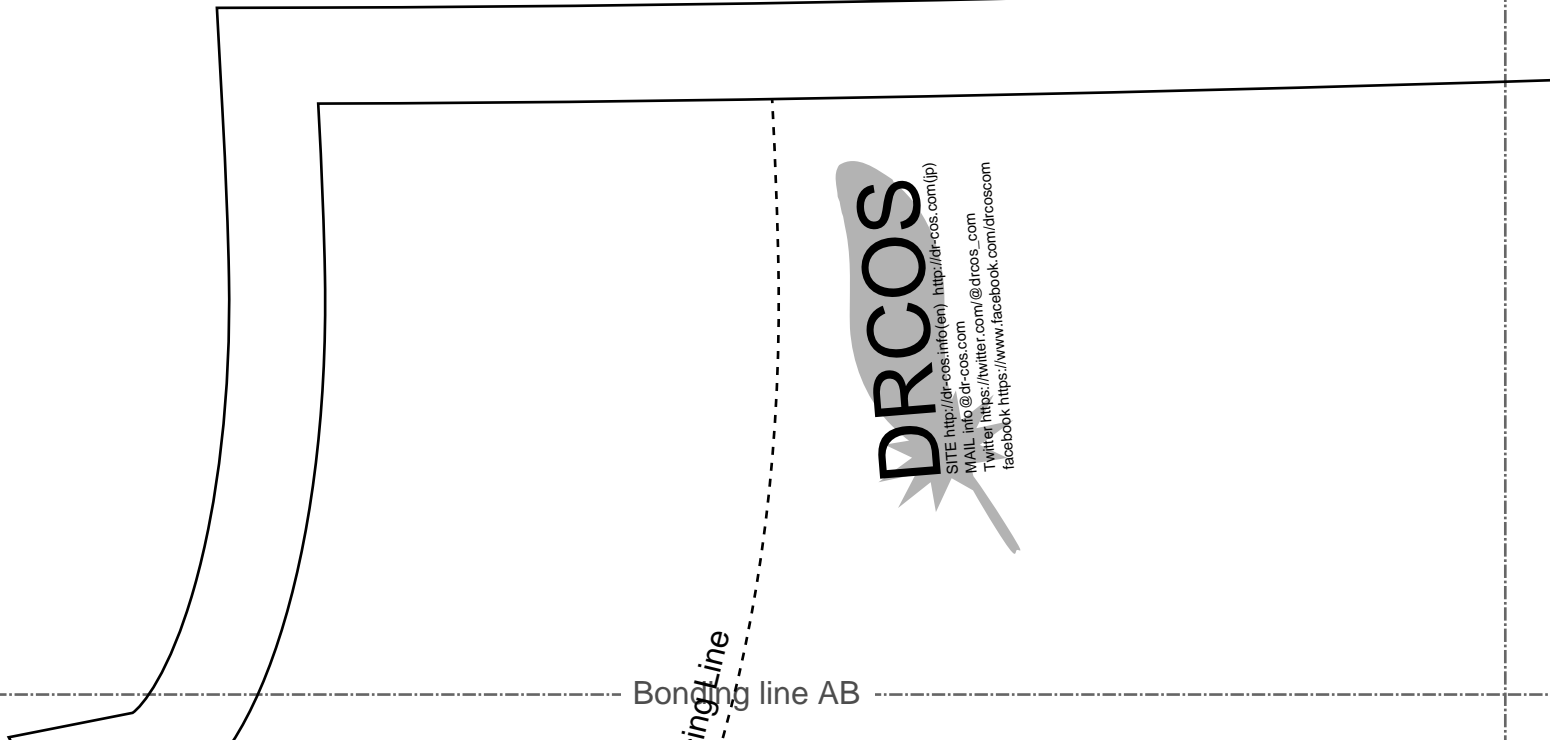


Advance 1/2in.

Bonding line AA

Bonding line Ba

Bonding line AB



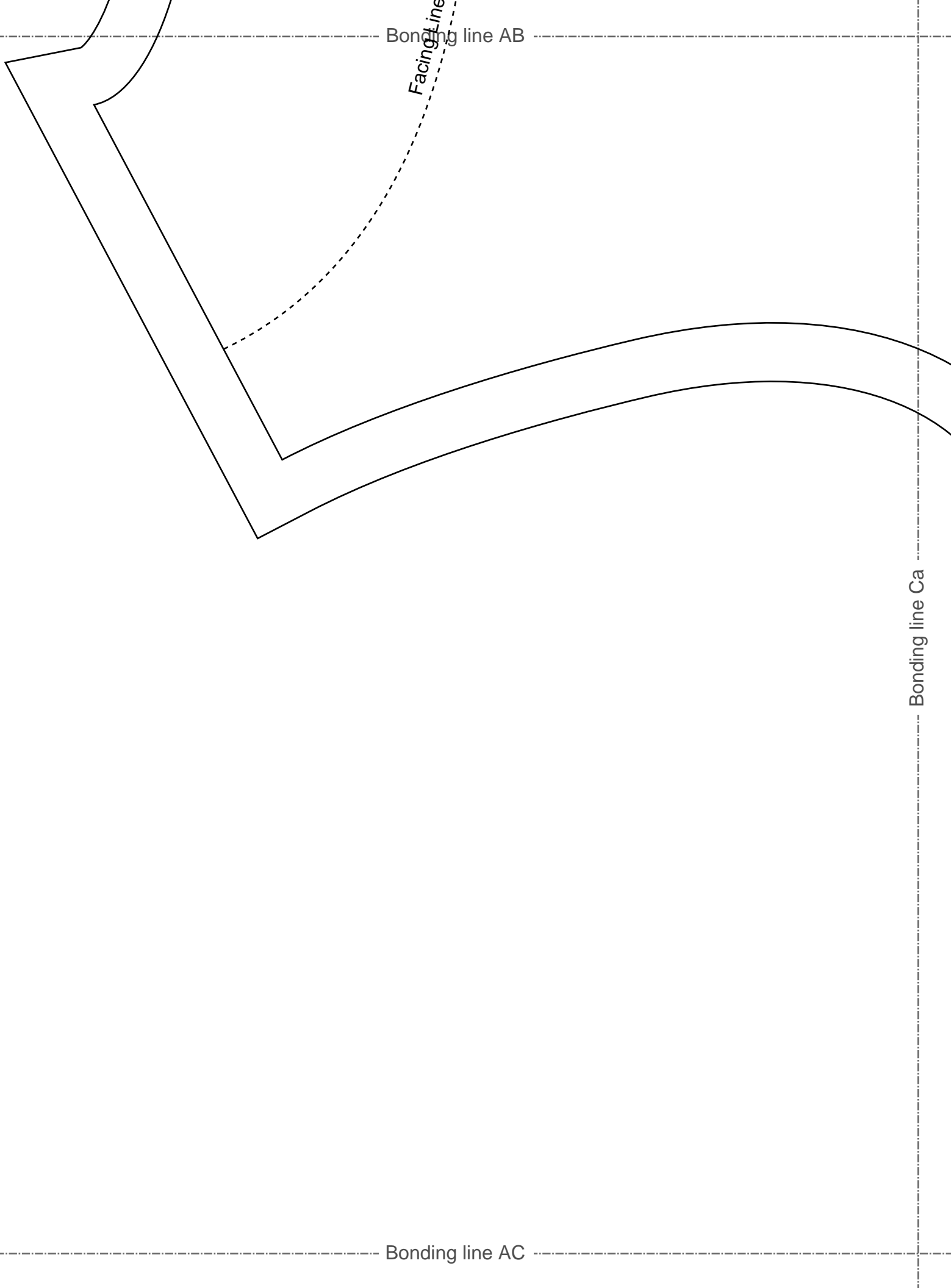
Bonding Line

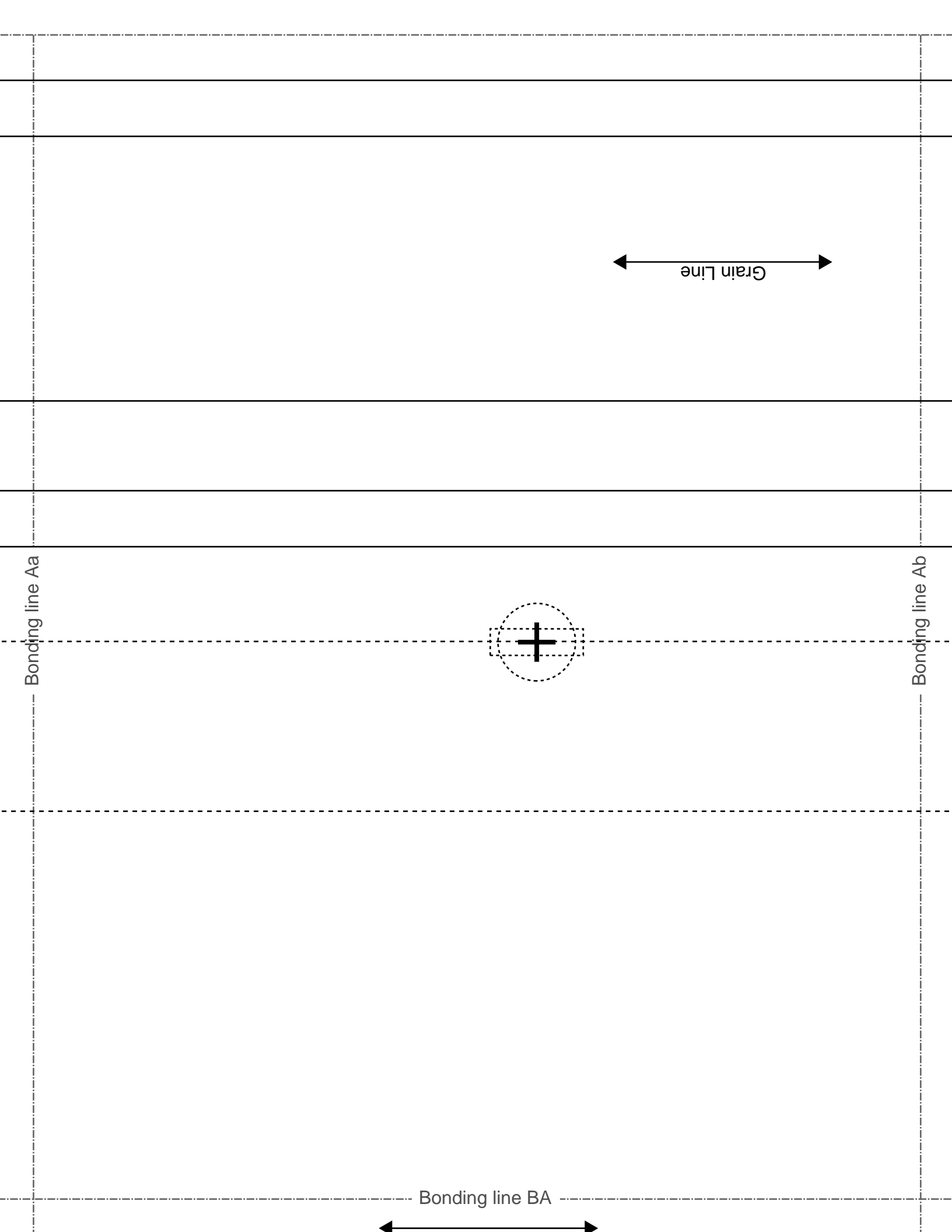
Bonding line AB

Facing Line

Bonding line Ca

Bonding line AC





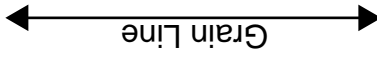
Grain Line

Bonding line Aa

Bonding line Ab

Bonding line BA

Bonding line BA



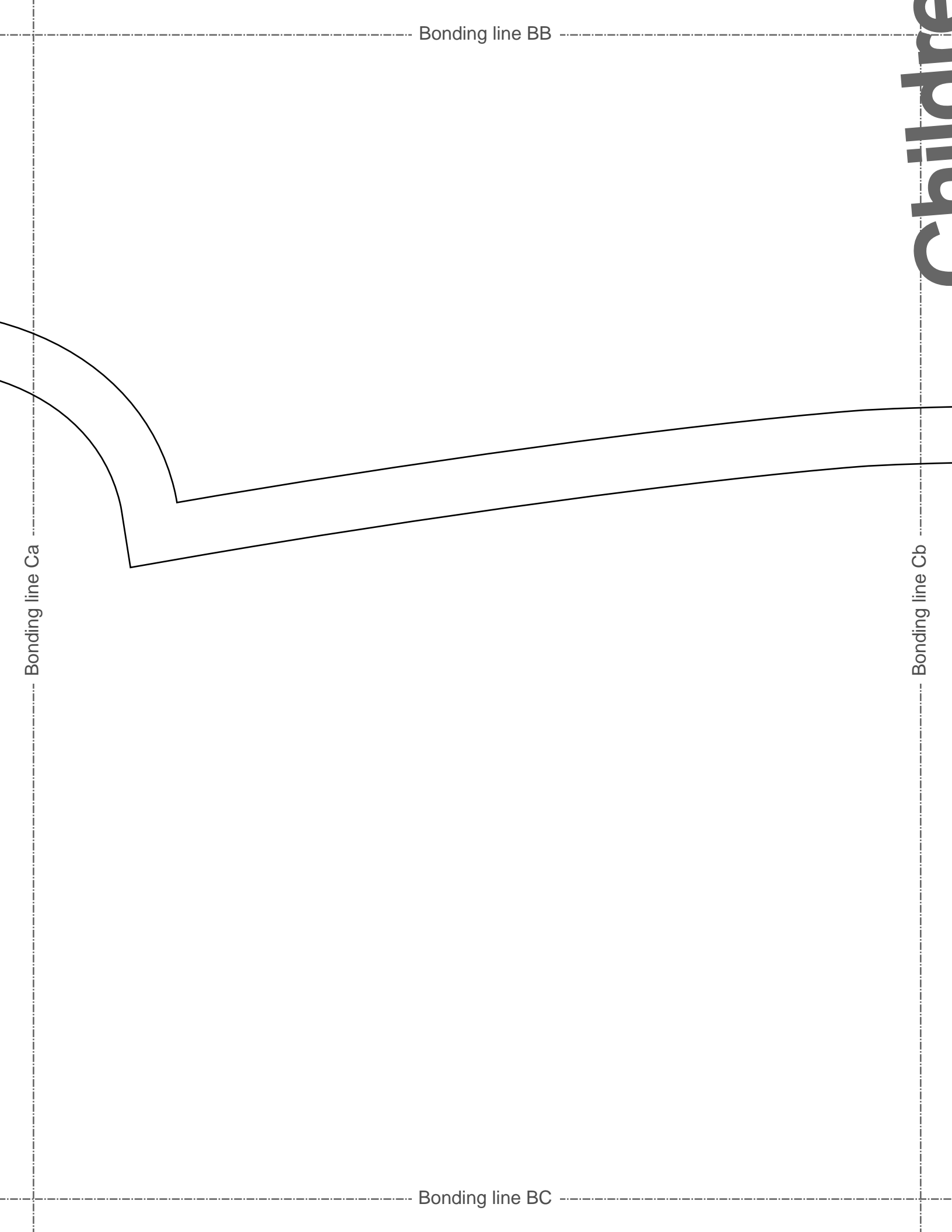
Grain Line

Bonding line Ba

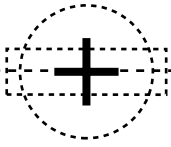
Bonding line Bb

Bonding line BB

size 10  
men's



Bonding line Ab



Bonding line Ac

Bonding line CA

two sheets

**ren's 10**

**arrowcoat  
back body  
two sheets**

Bonding line CB

Bonding line Bb

Bonding line CA

Bonding line Bc

heets



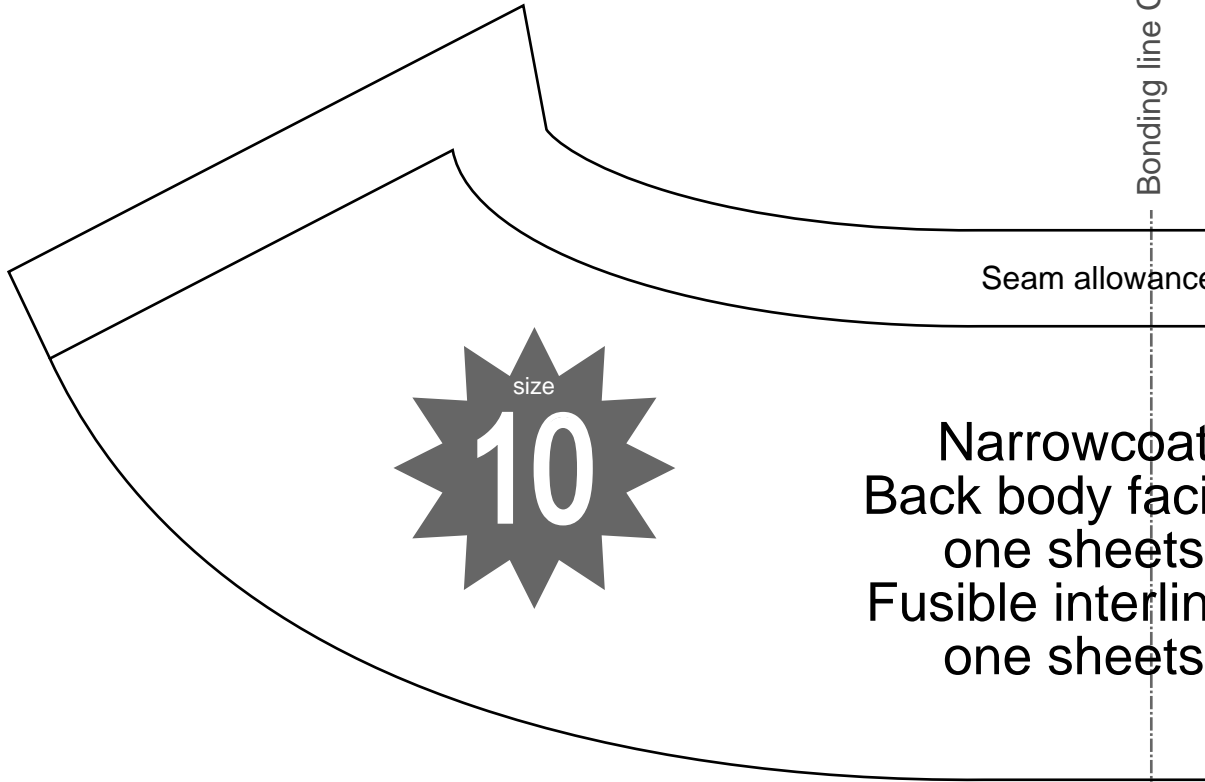
# Childre

Narrow  
Back  
two S

Bonding line CB

Bonding line Cb

Bonding line Cc



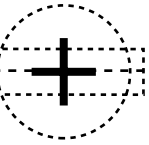
Seam allowance

Bonding line CC

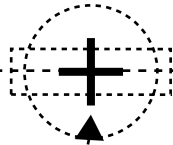
Seam allowance 1/2 in.

Narrowcoat  
Front body facing  
two sheets  
Fusible interlining  
two sheets

Boreing line Ac



Center position



Bonding line Ad

# Children

Narrowcoa  
Front body  
two sheets

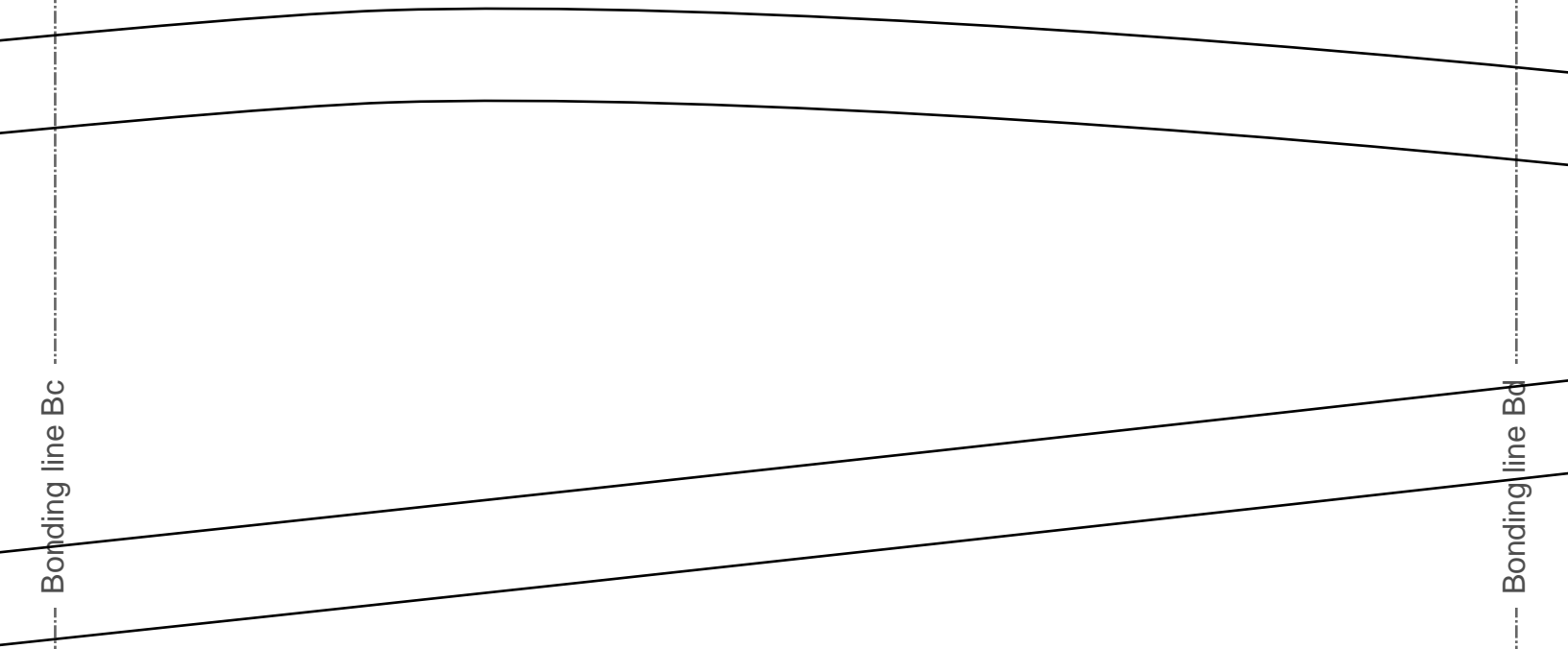
Baste

Bonding line DA

coats  
body  
eets

men's  
**10**  
size

Bonding line DA



Bonding line Bc

Bonding line Bd

Bonding line DB

Grain Line

Bonding line DB

Bonding line Cc

Bonding line Cd

allowance 1/2in.

lowcoat  
y facing  
neets  
terlining  
neets

Grain Line

**DRCOS**

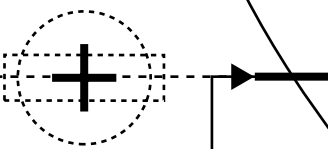
SITE [http://dr-cos.info\(en\)](http://dr-cos.info(en)) [http://dr-cos.com\(jp\)](http://dr-cos.com(jp))  
MAIL [info@dr-cos.com](mailto:info@dr-cos.com)  
Twitter [https://twitter.com/@drcos\\_com](https://twitter.com/@drcos_com)  
facebook <https://www.facebook.com/drcoscom>

Bonding line DC

# Children's <sup>size</sup> 10

Bonding line Ad

Bonding line Ae



Collar position

Facing Line

Bonding line EA

Bonding line EA

MAIL: info@dr-cos.com  
Twitter: https://twitter.com/@drcos.com  
facebook: https://www.facebook.com/drcoscom

**DRCOS**

SITE: <http://dr-cos.info/en/> <http://dr-cos.com/jp/>

Bonding line Bd

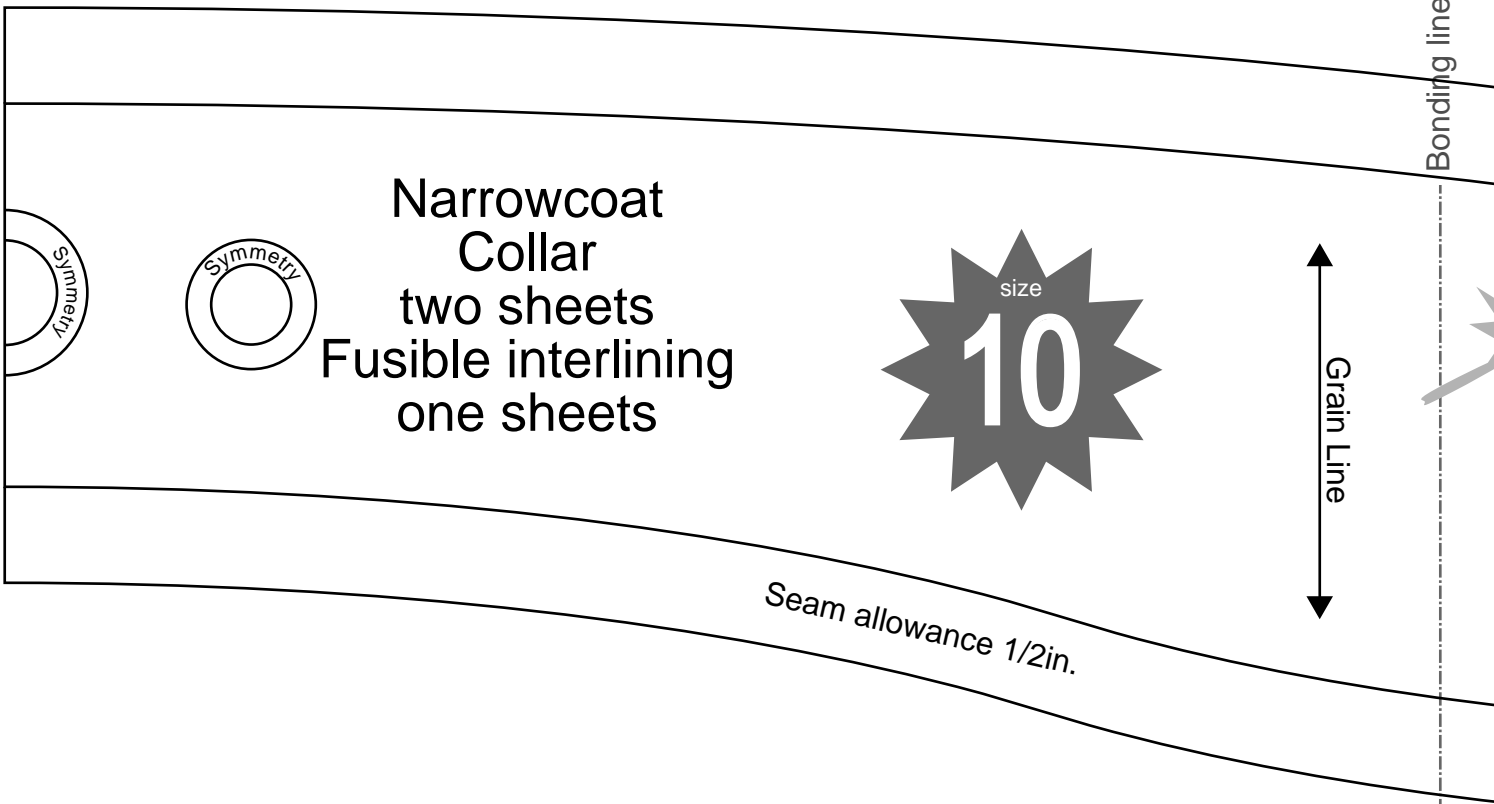
Bonding line Be

Bonding line EB

Bonding line EB

Bonding line Cd

Bonding line Ce



Narrowcoat  
Collar  
two sheets  
Fusible interlining  
one sheets

size  
**10**

Grain Line

Seam allowance 1/2in.

Bonding line EC

SITE <http://dr-cos.info/en> <http://dr-cos.com/jp>  
MAIL [info@dr-cos.com](mailto:info@dr-cos.com)  
TWITTER <https://twitter.com/dr-cos.com>  
FACEBOOK <https://www.facebook.com/drcos.com>

**DRCOS**

Bonding line Ae

Bonding line Af

Bonding line FA



Bonding line FA

**DRCOS**

SITE [http://dr-cos.info\(en\)](http://dr-cos.info(en)) [http://dr-cos.com\(jp\)](http://dr-cos.com(jp))

MAIL [info@dr-cos.com](mailto:info@dr-cos.com)

Twitter [https://twitter.com/@drcos\\_com](https://twitter.com/@drcos_com)

facebook <https://www.facebook.com/drcoscom>

Bonding line Be

Bonding line Bf

Seam allowance 1/2in.

Bonding line FB

**Chil**

Bonding line FB

Bonding line Ce

Bonding line Cf

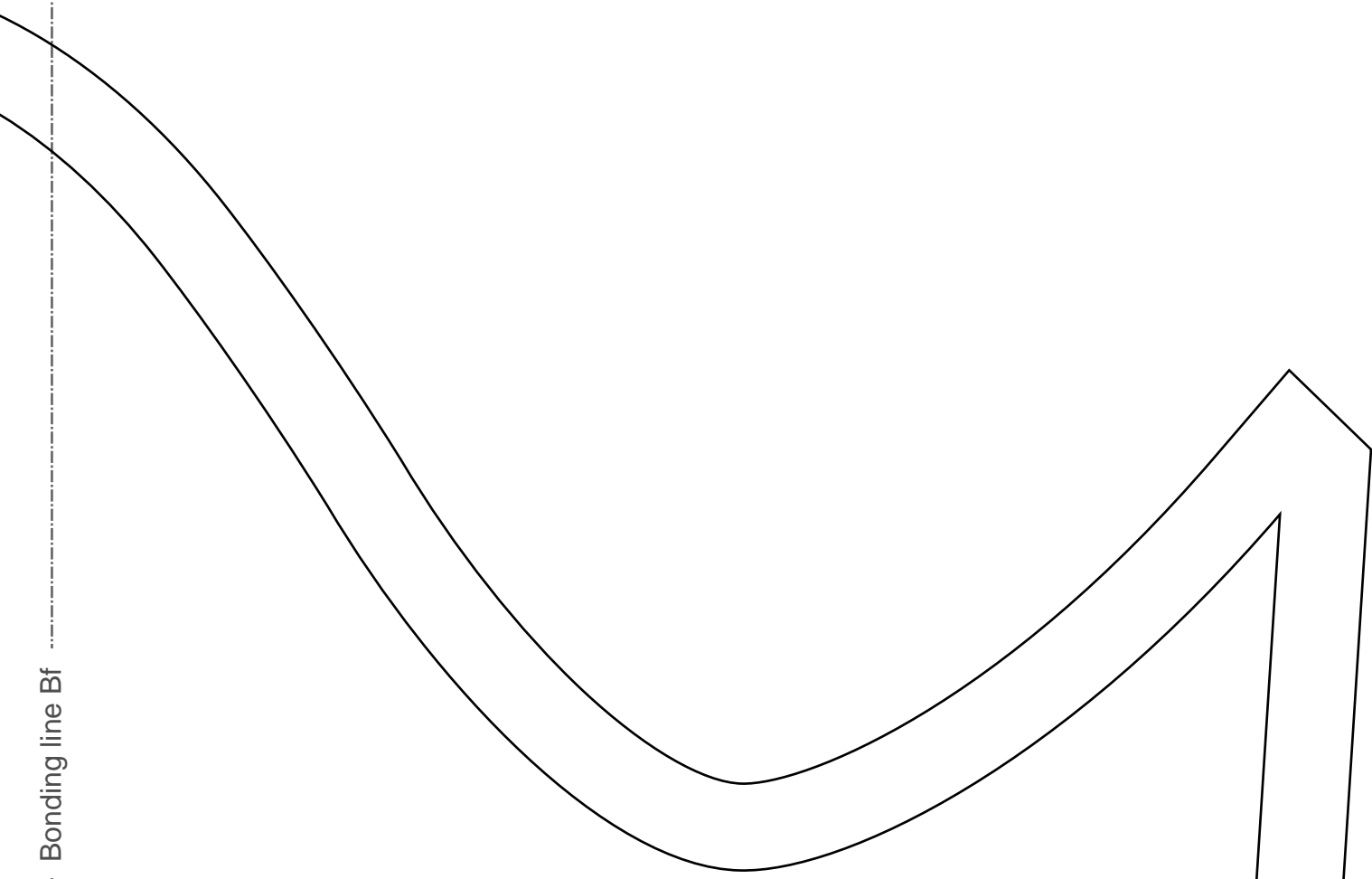
**DRCOS**

SITE [http://dr-cos.info\(en\)](http://dr-cos.info(en)) [http://dr-cos.com\(jp\)](http://dr-cos.com(jp))  
MAIL [info@dr-cos.com](mailto:info@dr-cos.com)  
Twitter [@drcos\\_com](https://twitter.com/@drcos_com)  
facebook <https://www.facebook.com/drcoscom>

Bonding line FC

Bonding line GA

Bonding line Bf



Children's **size 10**

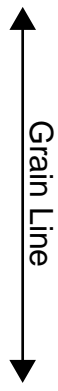
Narrowcoat  
Sleeve

Bonding line GB

# Narrowcoat Sleeve two sheets

Bonding line GB

Bonding line Cf



Seam allowance 1/2in.

Bonding line GC

