

[Home](#)  
[Back to Modskoat page](#)

**DRCOS**

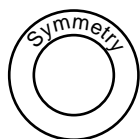
SITE [http://dr-cos.info\(en\)](http://dr-cos.info(en)) [http://dr-cos.com\(jp\)](http://dr-cos.com(jp))  
MAIL [info@dr-cos.com](mailto:info@dr-cos.com)  
Twitter [https://twitter.com/@drcos\\_com](https://twitter.com/@drcos_com)  
facebook <https://www.facebook.com/drcoscom>

Facing Line



**LADIES'** size **S**

Grain Line



Modskoat  
Back body top part  
one sheets

Bonding line Aa

Seam allowance 1/2in.

**DRCOS**

SITE [http://dr-cos.info\(en\)](http://dr-cos.info(en)) [http://dr-cos.com\(jp\)](http://dr-cos.com(jp))  
MAIL [info@dr-cos.com](mailto:info@dr-cos.com)  
Twitter [https://twitter.com/@drcos\\_com](https://twitter.com/@drcos_com)  
facebook <https://www.facebook.com/drcoscom>

Bonding line AA

Bonding line AA

Modskoat  
Back body lower part  
two sheets

Bonding line Ba

Drawstring position

Seam allowance 1/2in.

Bonding line AB

2in.

Bonding line AB

LADIES'  S  
size

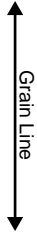
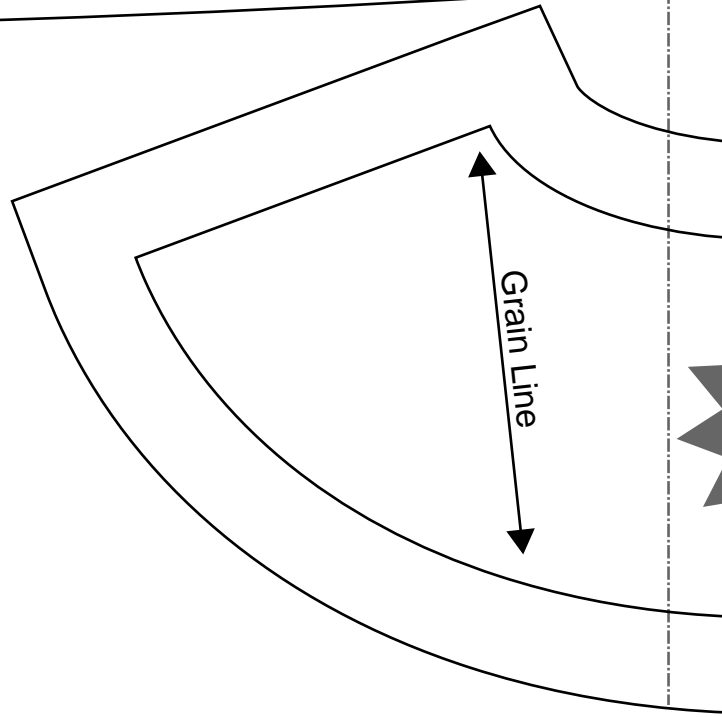


Grain Line

Bonding line Ca

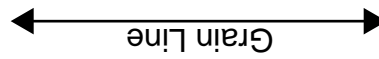
Bonding line AC

Bonding line AC

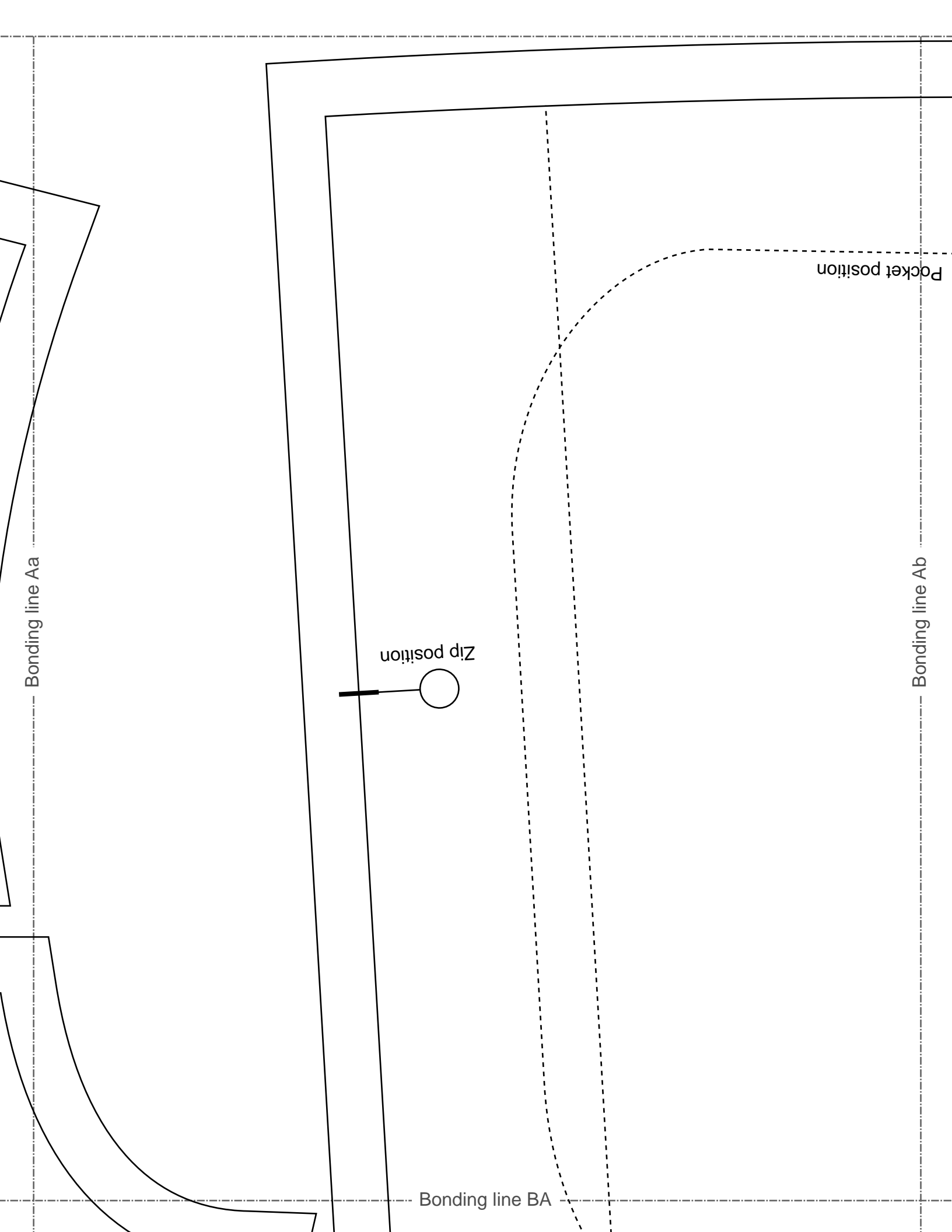


**LADIES' size S**

Seam allowance



Bonding line AD



Bonding line BA

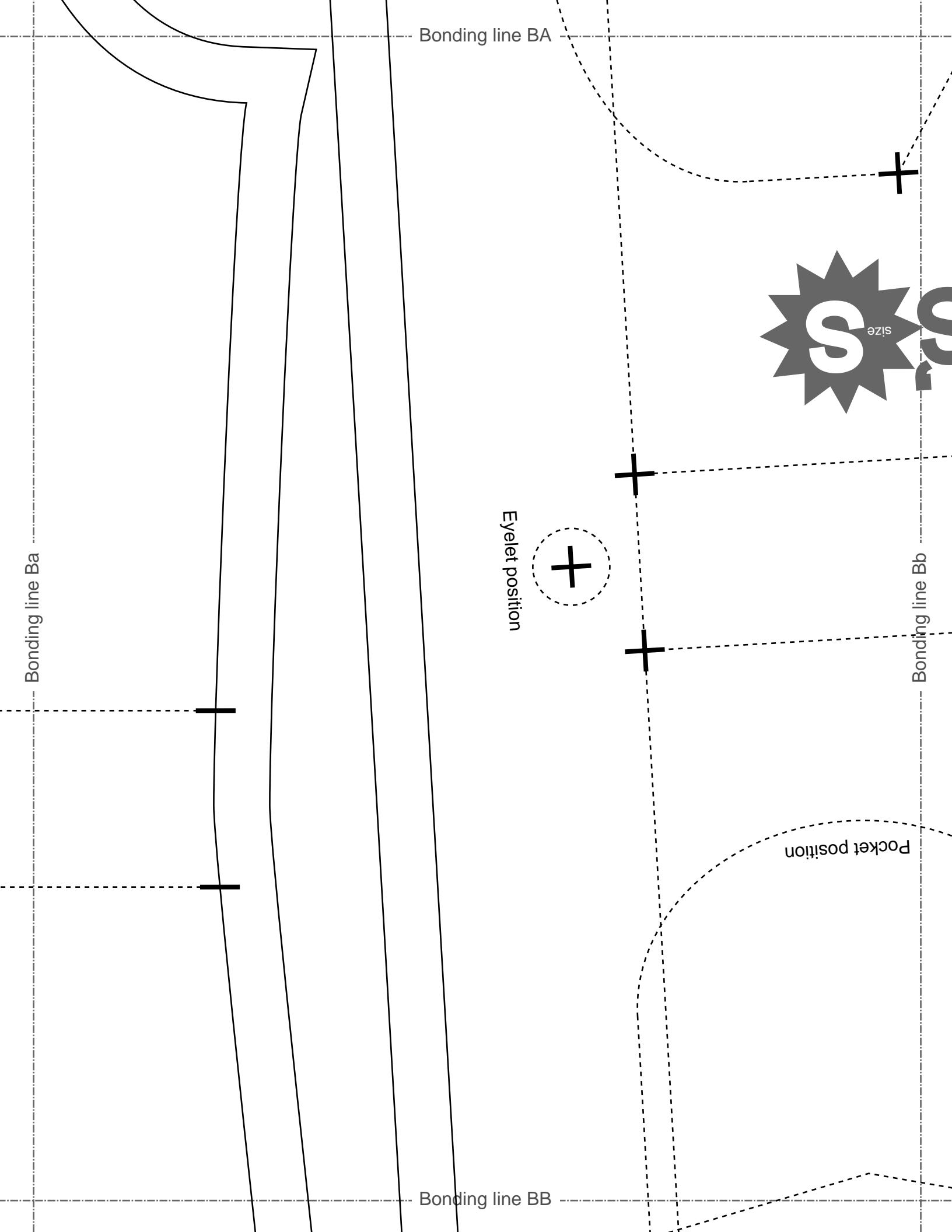
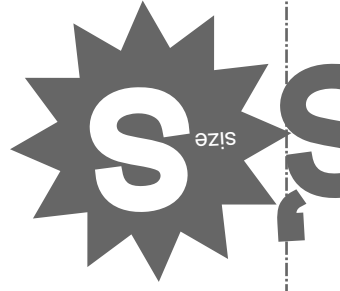
Bonding line Ba

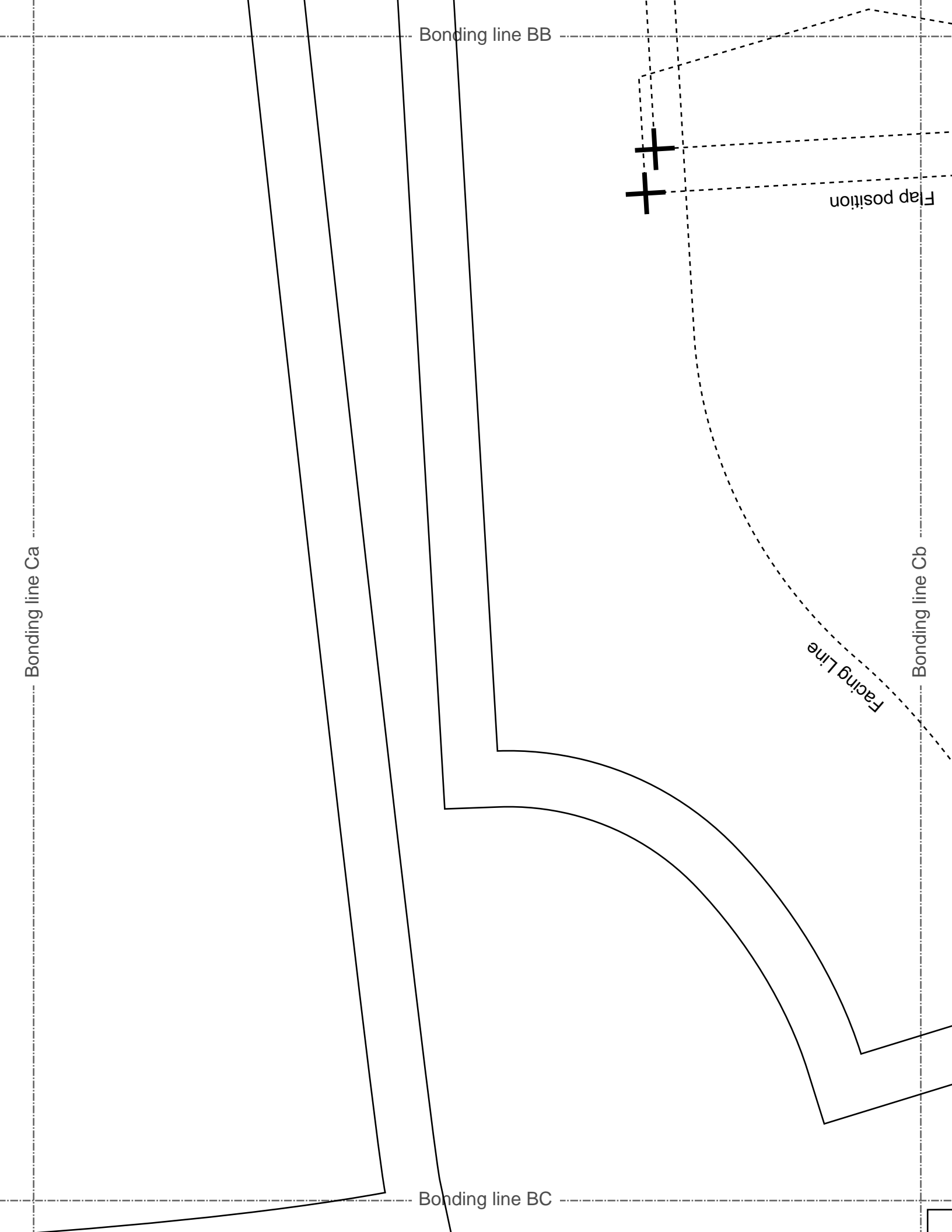
Eyelet position

Bonding line Bb

Bonding line BB

Pocket position

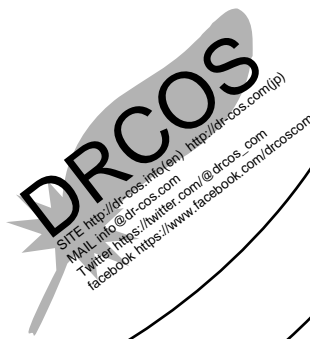




Bonding line BC

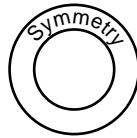


Modscot  
Back body facing  
one sheets  
Fusible interlining  
one sheets



Seam allowance 1/2in.

Bonding line Da



Modscot  
Drawstring  
one sheets



Bonding line Db

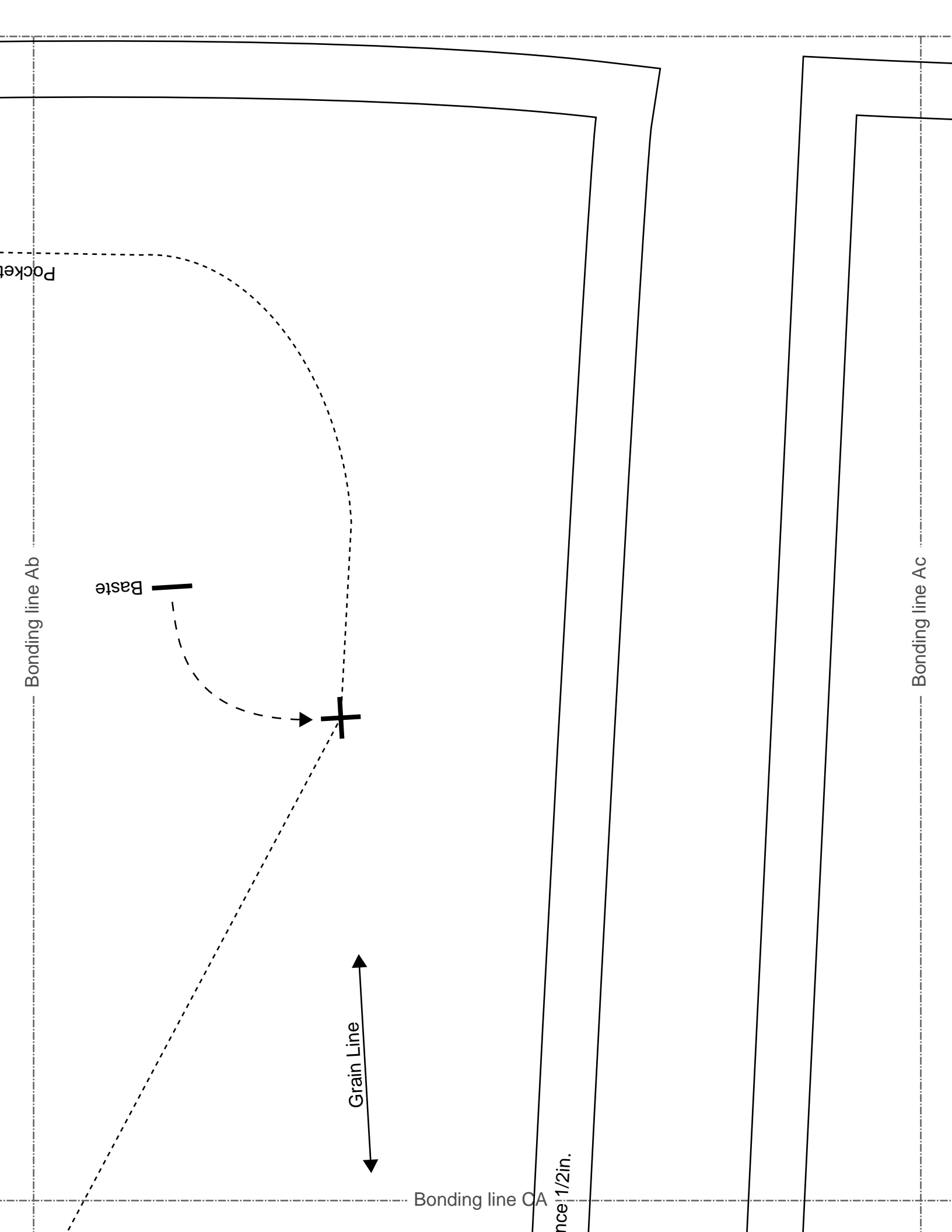
Seam allowance 1/2in.

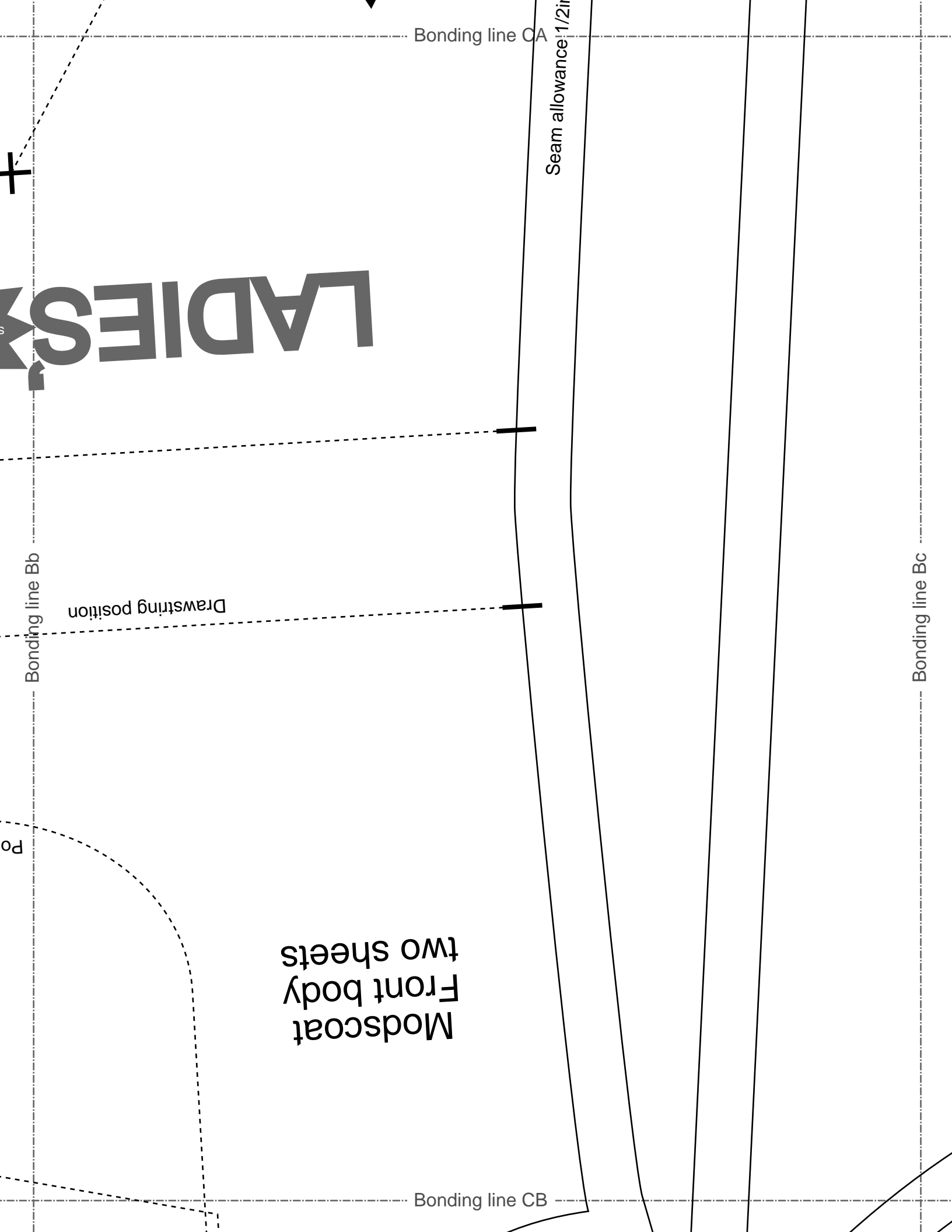


Seam allowance 1/2in.

Bonding line BD







Bonding line CB

Flap p

Bonding line Cb

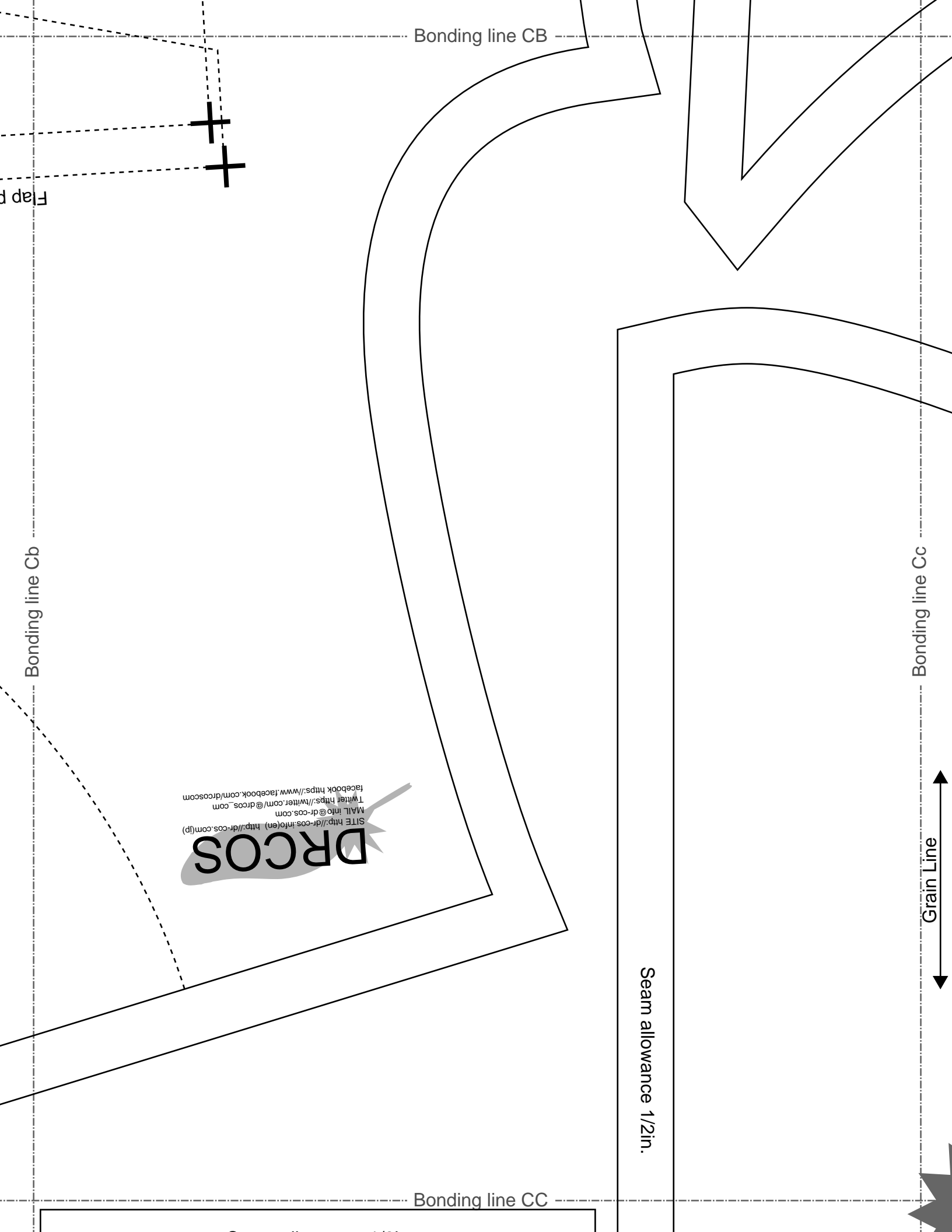
Bonding line Cc

**DRCOS**  
 SITE <http://dr-cos.info/en> <http://dr-cos.com/jp>  
 MAIL [info@dr-cos.com](mailto:info@dr-cos.com)  
 TWITTER <https://twitter.com/dr-cos.com>  
 FACEBOOK <https://www.facebook.com/dr-cos.com>

Seam allowance 1/2in.

Bonding line CC

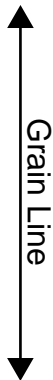
Grain Line



Bonding line CC

Seam allowance 1/2in.

Modscot  
pocket  
one sheets



**DRCOS**  
SITE <http://dr-cos.info/en> <http://dr-cos.com/fp>  
MAIL [info@dr-cos.com](mailto:info@dr-cos.com)  
Twitter [https://twitter.com/drcos\\_com](https://twitter.com/drcos_com)  
facebook <https://www.facebook.com/drcoscom>

Bonding line Dc

Bonding line Db

Modscot  
Front body facing  
two sheets  
Fusible interlining  
two sheets

Bonding line CD

Seam allowance 1/2 in.

Bonding line Ac

Bonding line Ad

Bonding line DA

Grain Line



Bonding line DA



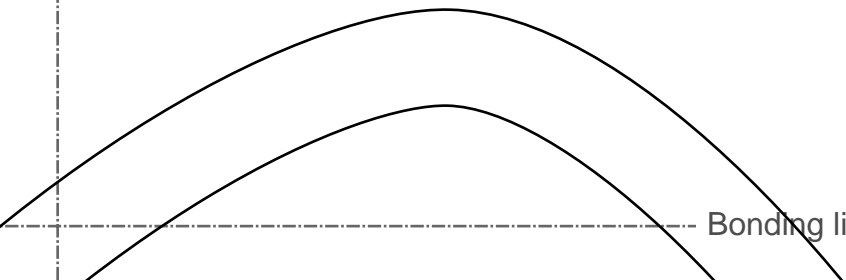
Bonding line Bc

Bonding line Bd

Modscot  
Sleeve  
two sheets



Bonding line DB



Bonding line DB

Bonding line Cc

Bonding line Cd



Modscot  
hood  
two sheets

SOS  
http://dr-cos.com(pdf)  
@dr-cos.com  
facebook.com/dr-cos.com



fac  
TW  
M7  
SIT

Bonding line Dc

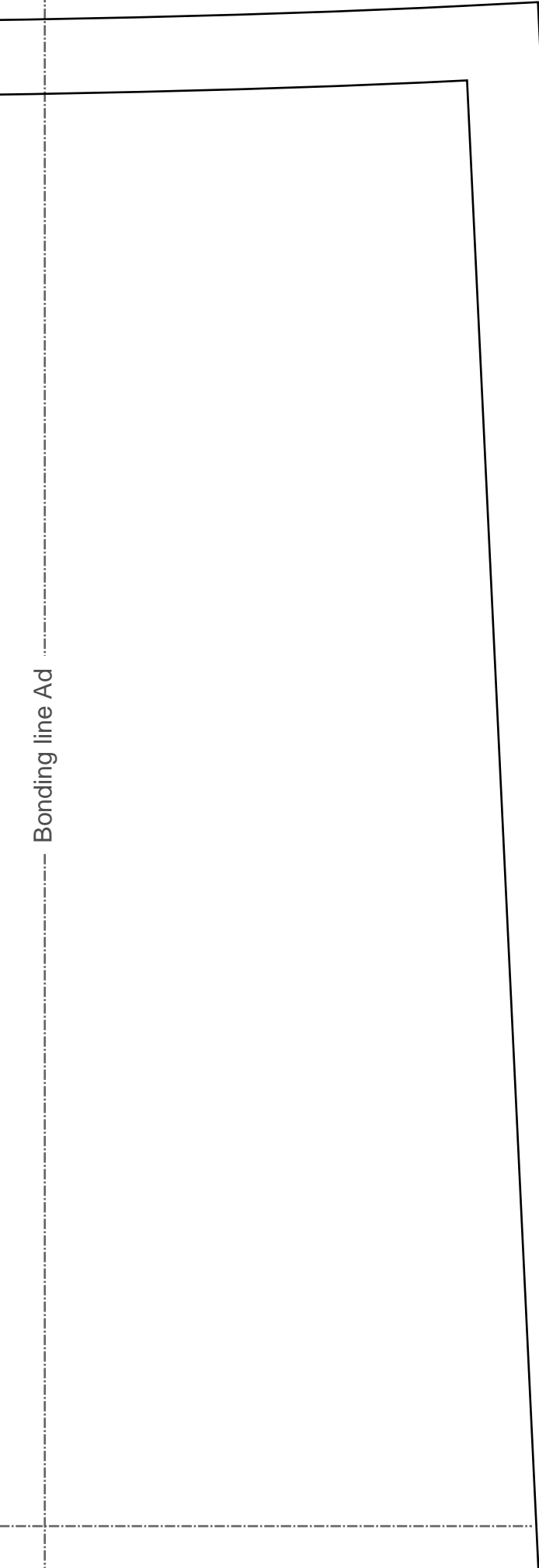
Bonding line Dd

**DRCOS**  
SITE: <http://drcos.com>  
MAIL: [info@drcos.com](mailto:info@drcos.com)  
Twitter: <https://twitter.com/drcos>  
Facebook: <https://www.facebook.com/drcos.com>

Bonding line DD



Bonding line Ad

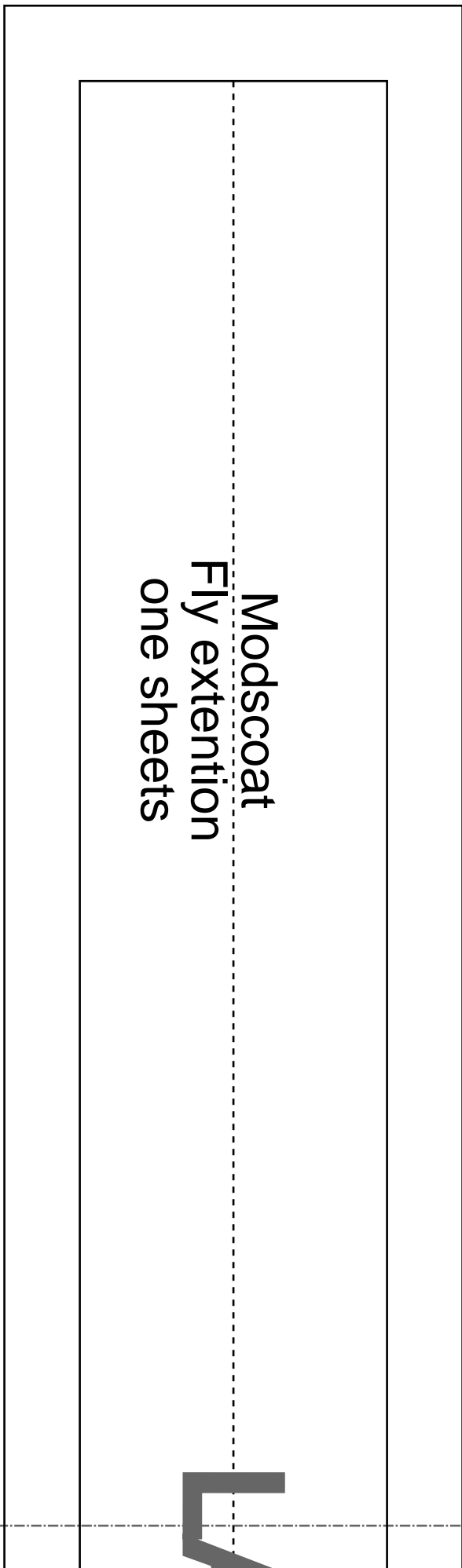


Bonding line EA

**Modskoat**  
**Fly extention**  
**one sheets**



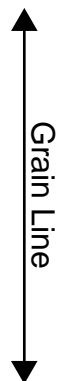
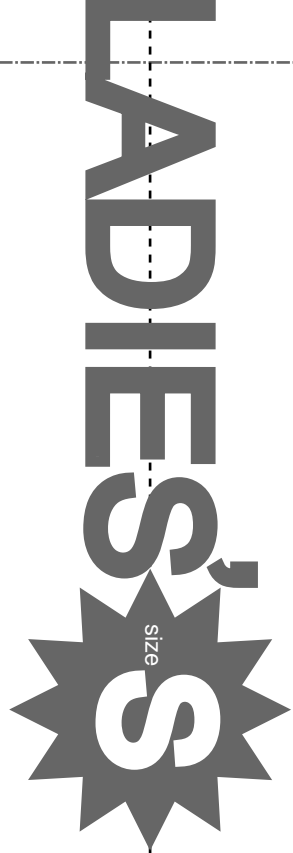
Bonding line Ae



Bonding line Bd

Bonding line EA

Seam allowance 1/2in.



Creese Line

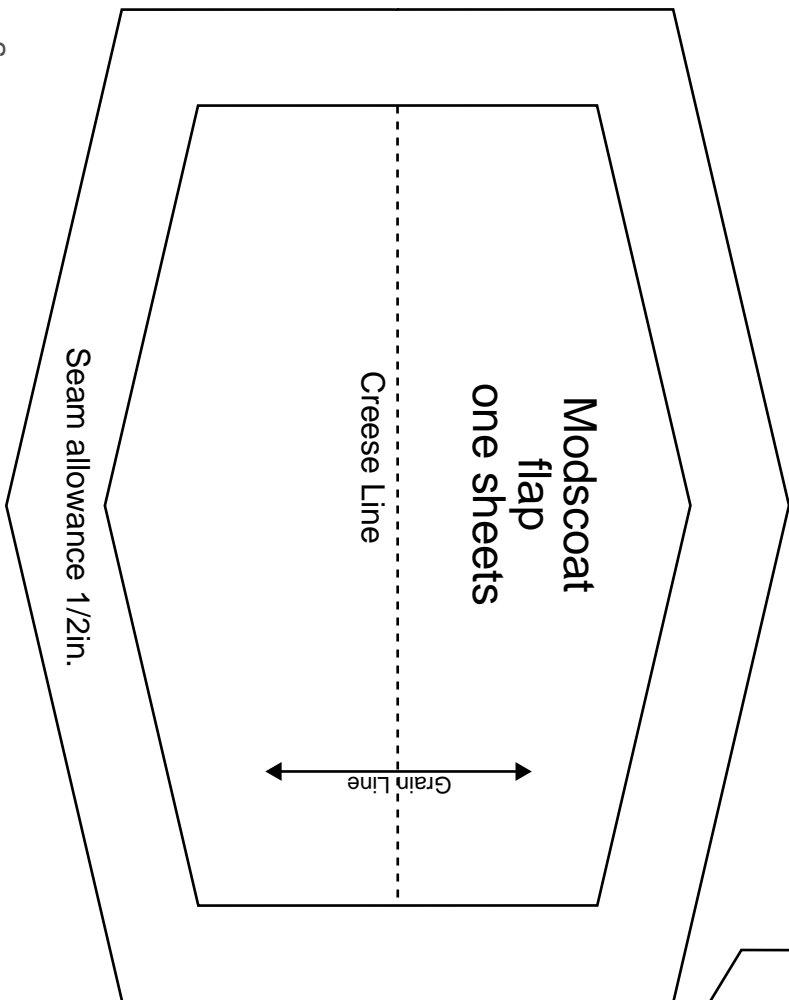
Bonding line Be

Bonding line EB

Bonding line EB

**DRCOS**  
SITE <http://dr-cos.info/en> <http://dr-cos.com>  
MAIL [info@dr-cos.com](mailto:info@dr-cos.com)  
Twitter <https://twitter.com/dr-cos>  
facebook <https://www.facebook.com/drcos>

Bonding line Cd

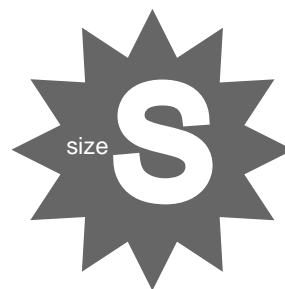


Bonding line EC

**DRCOS**  
SITE <http://dr-cos.info/en> <http://dr-cos.com>  
MAIL [info@dr-cos.com](mailto:info@dr-cos.com)  
Twitter <https://twitter.com/dr-cos>  
facebook <https://www.facebook.com/drcos.com>

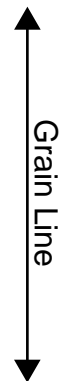
Bonding line Ce

Bonding line EC



Pocket mouth

**DRCOS**  
SITE [http://dr-cos.info\(en\)](http://dr-cos.info(en)) [http://dr-cos.com\(jp\)](http://dr-cos.com(jp))  
MAIL [info@dr-cos.com](mailto:info@dr-cos.com)  
Twitter [https://twitter.com/drcos\\_com](https://twitter.com/drcos_com)  
facebook <https://www.facebook.com/drcoscom>



Modskoat  
pocket  
two sheets

Seam allowance 1/2in.

Bonding line Dd

Bonding line De

Bonding line ED