

**DRCOS**

SITE [http://dr-cos.info\(en\)](http://dr-cos.info(en)) [http://dr-cos.com\(jp\)](http://dr-cos.com(jp))  
MAIL [info@dr-cos.com](mailto:info@dr-cos.com)  
Twitter [https://twitter.com/@drcos\\_com](https://twitter.com/@drcos_com)  
facebook <https://www.facebook.com/drcoscom>

LADIES'  size

Military Jacket  
Back Top Body  
one sheets

Epaulette position

Grain Line

Bonding line Aa

Seam allowance 1/2in.

Bonding line AA

**DRCOS**

**DRCOS**

SITE [http://dr-cos.info\(en\)](http://dr-cos.info(en)) [http://dr-cos.com\(jp\)](http://dr-cos.com(jp))  
MAIL [info@dr-cos.com](mailto:info@dr-cos.com)  
Twitter [https://twitter.com/drcos\\_com](https://twitter.com/drcos_com)  
facebook <https://www.facebook.com/drcoscom>

Bonding line AA

Bonding line Ba

LADIES' **LL** size

Military Jacket  
Back Bottom Body  
Two sheets

Bonding line AB

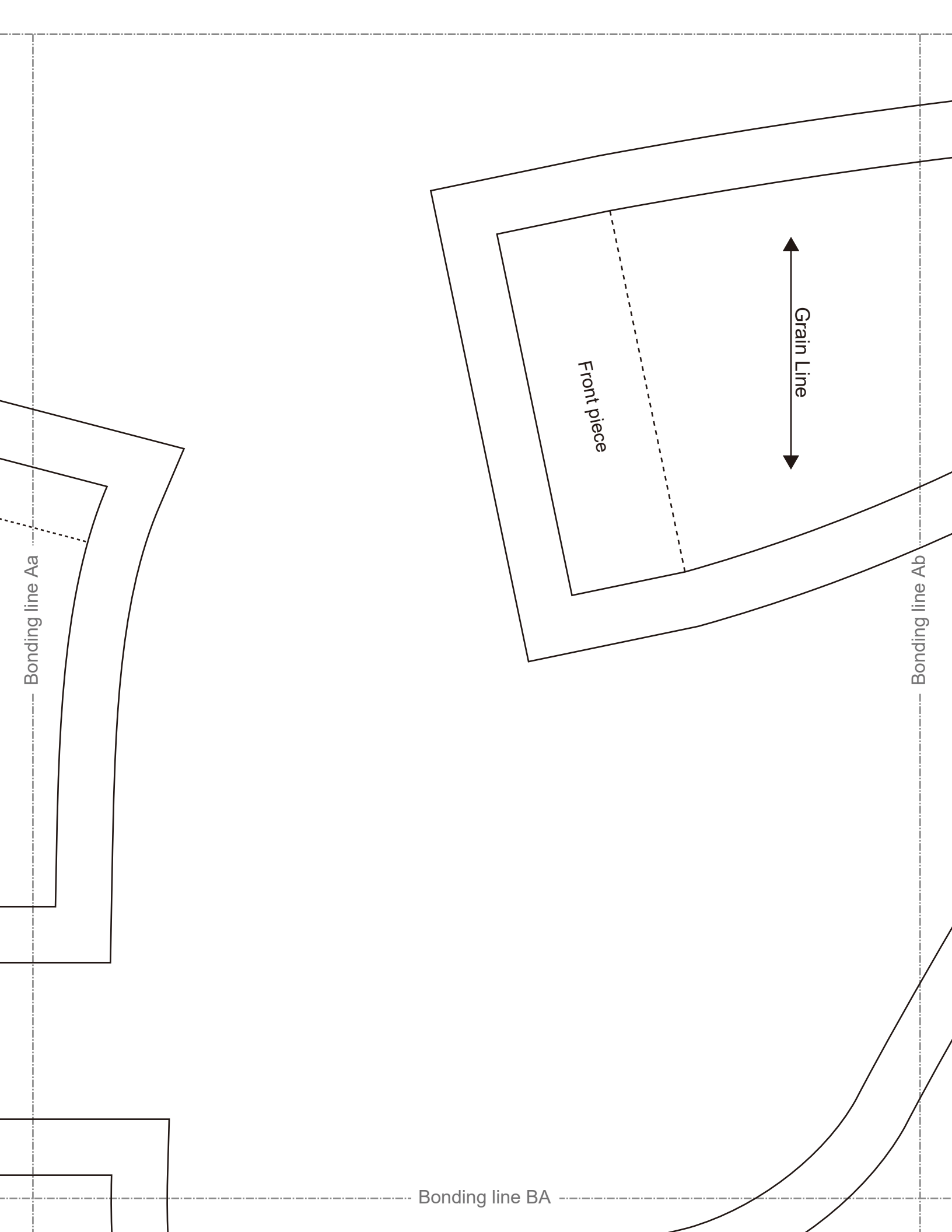
Bonding line AB



Bonding line Ca

Seam allowance 1/2in.

Bonding line AC

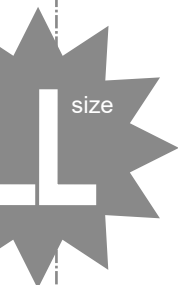


Bonding line BA

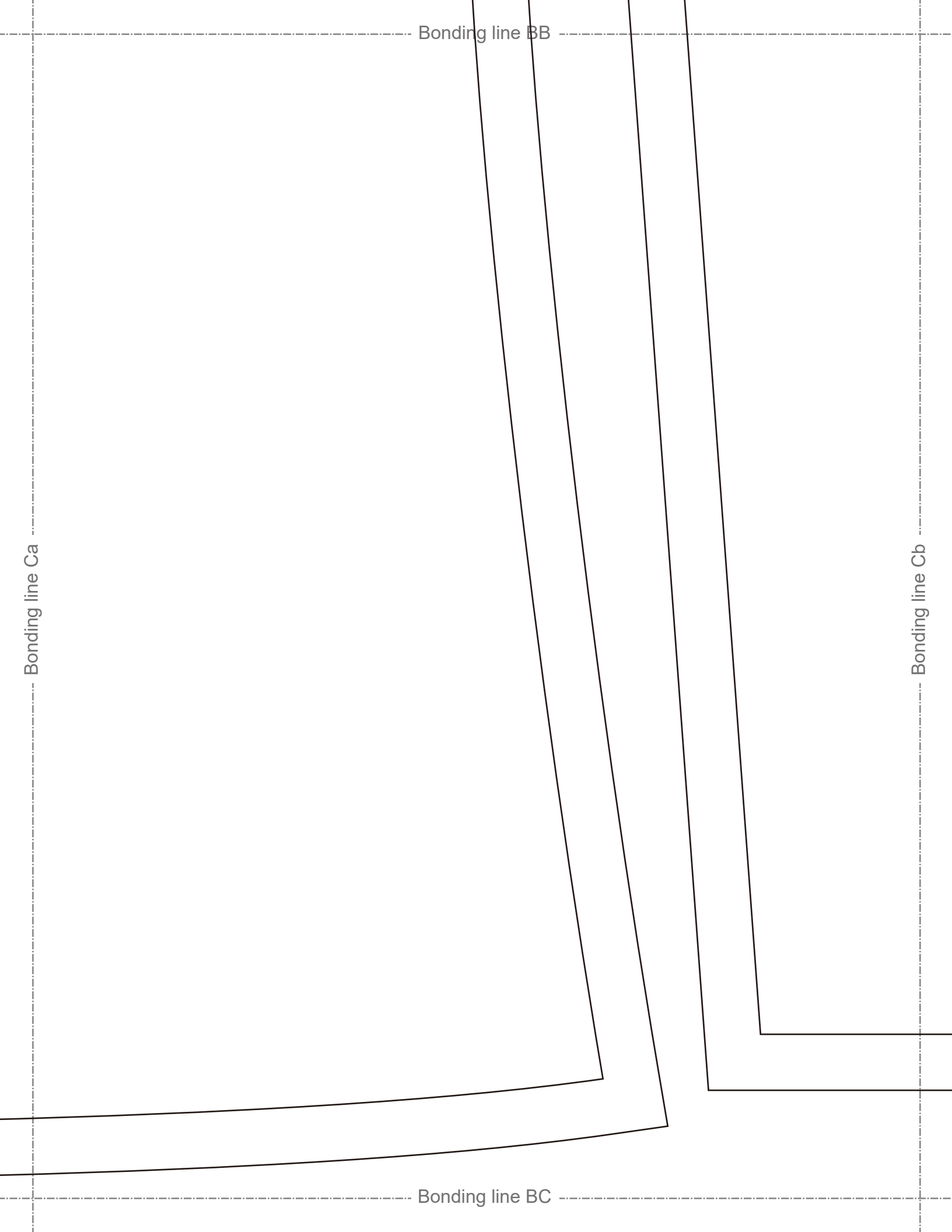
Front

Bonding line Ba

Bonding line Bb



Bonding line BB



Military Jacket  
Collar two sheets  
Fusible interlining one sheets

LADIE

Seam allowance 1/2in.

Bonding line Ab

Bonding line Ac

**DRCOS**

SITE <http://dr-cos.info/en> <http://dr-cos.com/jp>  
MAIL [info@dr-cos.com](mailto:info@dr-cos.com)  
Twitter [https://twitter.com/@drcos\\_com](https://twitter.com/@drcos_com)  
facebook <https://www.facebook.com/drcoscom>

Bonding line CA

LADIES'  LL size

Military Jacket  
Sleeve  
two sheets



Bonding line CB



Grain Line

Bonding line Cb

Bonding line Cc

Seam allowance 1/2in.

Bonding line CC

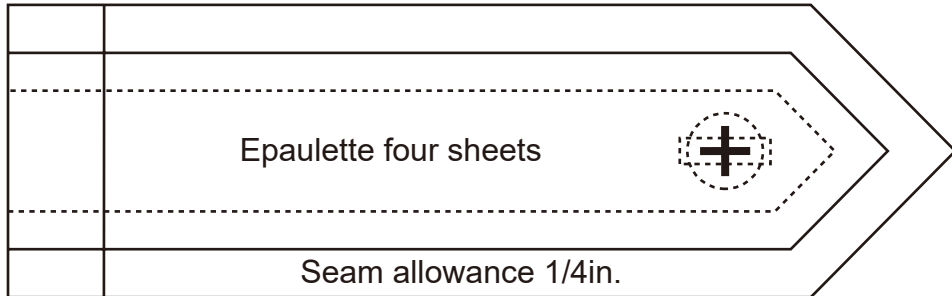
IES'LL size

**DRCOS**

SITE [http://dr-cos.info\(en\)](http://dr-cos.info(en)) [http://dr-cos.com\(jp\)](http://dr-cos.com(jp))  
MAIL [info@dr-cos.com](mailto:info@dr-cos.com)  
Twitter [https://twitter.com/@drcos\\_com](https://twitter.com/@drcos_com)  
facebook <https://www.facebook.com/drcoscom>

Bonding line Ac

Bonding line Ad



Bonding line DA

Bonding line DA

Back

Bonding line Bc

Bonding line Bd

**DRCOS**

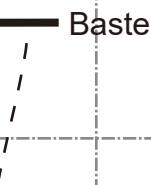
SITE [http://dr-cos.info\(en\)](http://dr-cos.info(en)) [http://dr-cos.com\(jp\)](http://dr-cos.com(jp))

MAIL [info@dr-cos.com](mailto:info@dr-cos.com)

Twitter [@drcos\\_com](https://twitter.com/@drcos_com)

facebook <https://www.facebook.com/drcoscom>

Bonding line DB



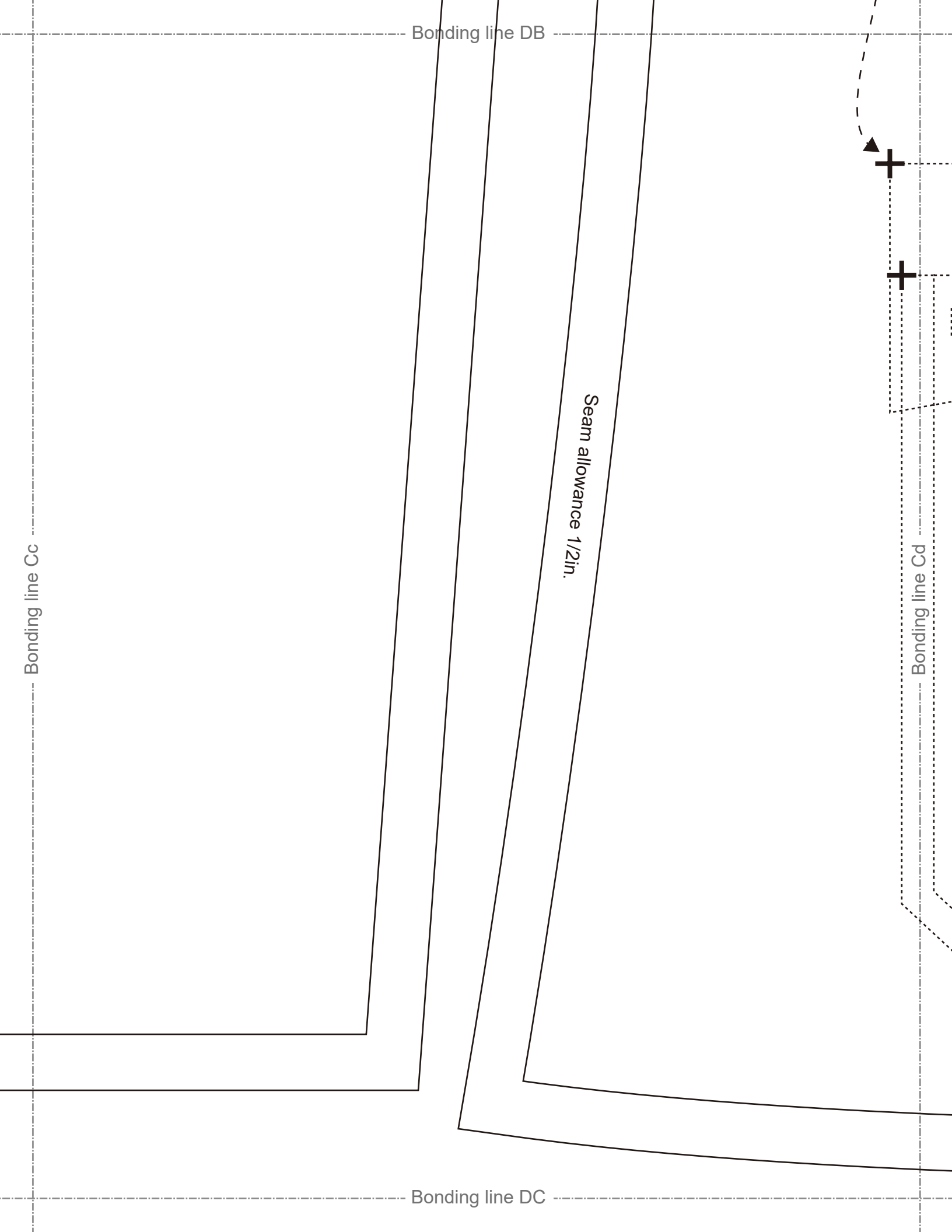
Bonding line DB

Bonding line Cc

Seam allowance 1/2in.

Bonding line Cd

Bonding line DC



Seam allowance 1/4in.

# Military Jacket flap four sheets



Bonding line Ad

Epaulette position

Bonding line Ae

## DRCOS

SITE [http://dr-cos.info\(en\)](http://dr-cos.info(en)) [http://dr-cos.com\(jp\)](http://dr-cos.com(jp))  
MAIL [info@dr-cos.com](mailto:info@dr-cos.com)  
Twitter [https://twitter.com/@drcos\\_com](https://twitter.com/@drcos_com)  
facebook <https://www.facebook.com/drcoscom>

# LADIES' **LL** size

Facing Line

Grain Line

# Military Jacket Front Top Body Two sheets

Bonding line EA

# I wo sheets

Bonding line EA

Flap position

Pocket position

Bonding line Bd

Bonding line Be

# LADIES' LL size

Facing Line

Baste

Bonding line EB

com(jp)  
oscom

Bonding line EB

Grain Line

Pocket position

Bonding line Cd

Bonding line Ce

# Military Jacket Front Bottom Body Two sheets

Open fastener position

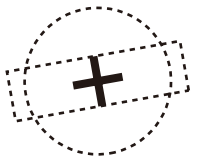


Bonding line EC

Bonding line Ae

Bonding line Af

LADIES' **LL** size



Military Jacket  
flap  
two sheets



Seam allowance 1/2in.

Seam allowance 1/2in.

Sheet  
two sheets  
two sheets

Bonding line FA

Jacket  
one sheets  
one sheets



Bonding line Be



Military Jacket  
Facing two sheets  
Fusible interlining two sh



Seam allowance 1/2in.

Bonding line FA

Bonding line FE



Military Jacket  
Front piece one sh  
Fusible interlining one



Seam allowance 1/2in.

Bonding line Bf

Bonding line Ce

**DRCOS**

SITE <http://dr-cos.info/en> <http://dr-cos.com/jp>  
MAIL [info@dr-cos.com](mailto:info@dr-cos.com)  
Twitter [@drcos\\_com](https://twitter.com/@drcos_com)  
facebook <https://www.facebook.com/drcoscom>

LADIES'S <sup>size</sup> **IT**

Bonding line F3

**DRCOS**

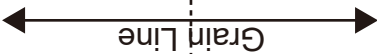
SITE <http://dr-cos.info/en> <http://dr-cos.com/jp>  
MAIL [info@dr-cos.com](mailto:info@dr-cos.com)  
Twitter [@drcos\\_com](https://twitter.com/@drcos_com)  
facebook <https://www.facebook.com/drcoscom>

LADIES'S <sup>size</sup> **IT**

Bonding line FC

Bonding line Cf

# LADIES'S size



**Military Jacket**  
**Cuffs two sheets**  
**Fusible interlining two sheets**

Seam allowance 1/2in.

Bonding line Af

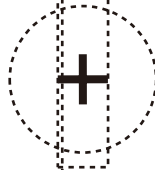
Bonding line GA

Bonding line GA

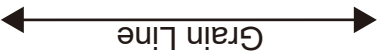


Bonding line Bf

Button position



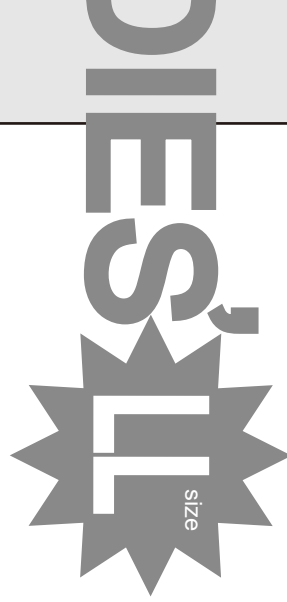
Grain Line



Seam allowance 1/2in.

LADII

Military Jacket  
Pocket  
two sheets



Bonding line Cf



Grain Line



Military Jacket  
Pocket  
two sheets

Seam allowance 1/2in.

Bonding line GC