

[Home](#)

[Back to Mermaiddress page](#)

Seam allowance 1/2in.

Seam allowance 1/2in.

Bonding line Aa

Bonding line AA

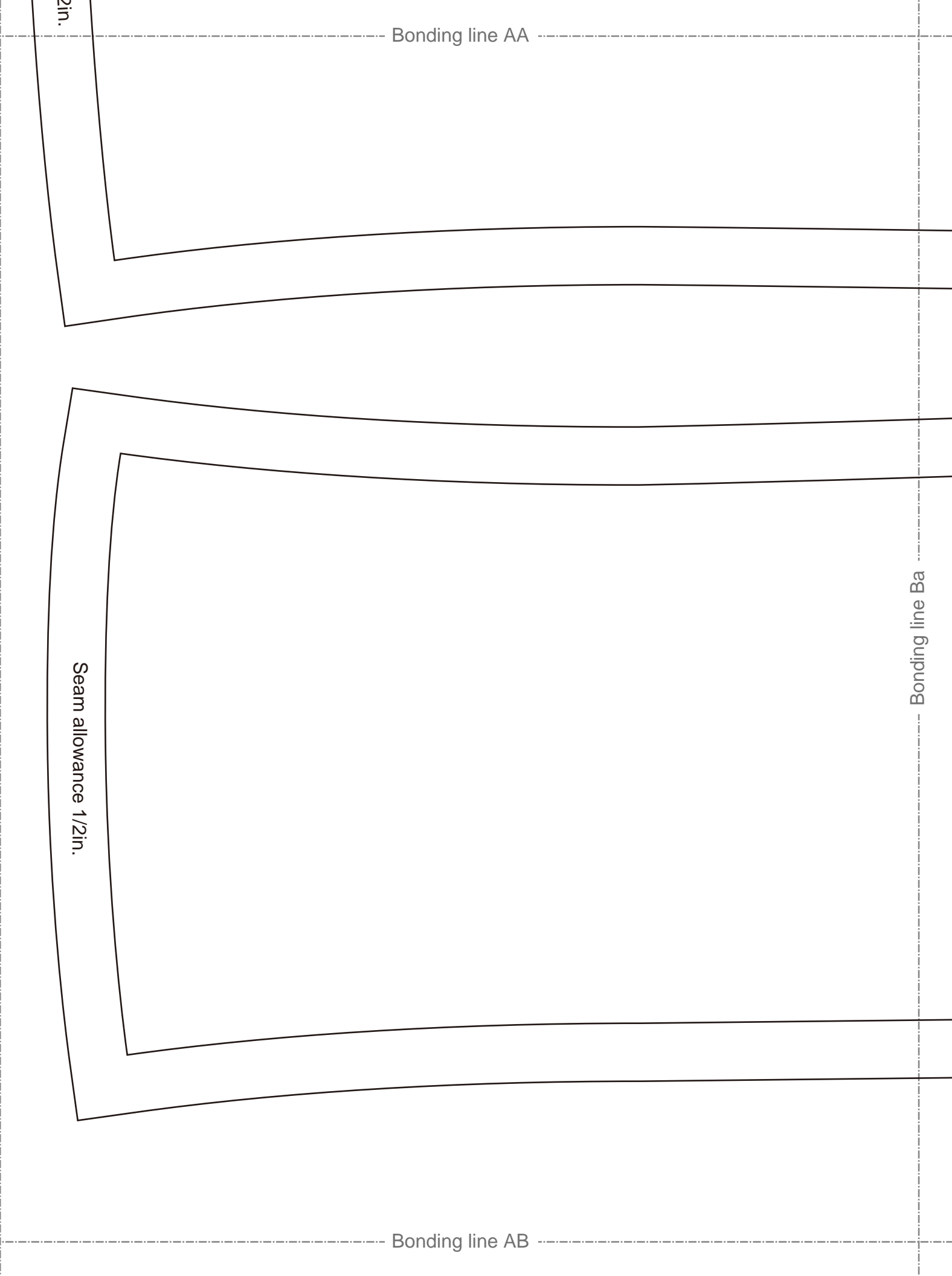
Bonding line AA

2in.

Seam allowance 1/2in.

Bonding line Ba

Bonding line AB

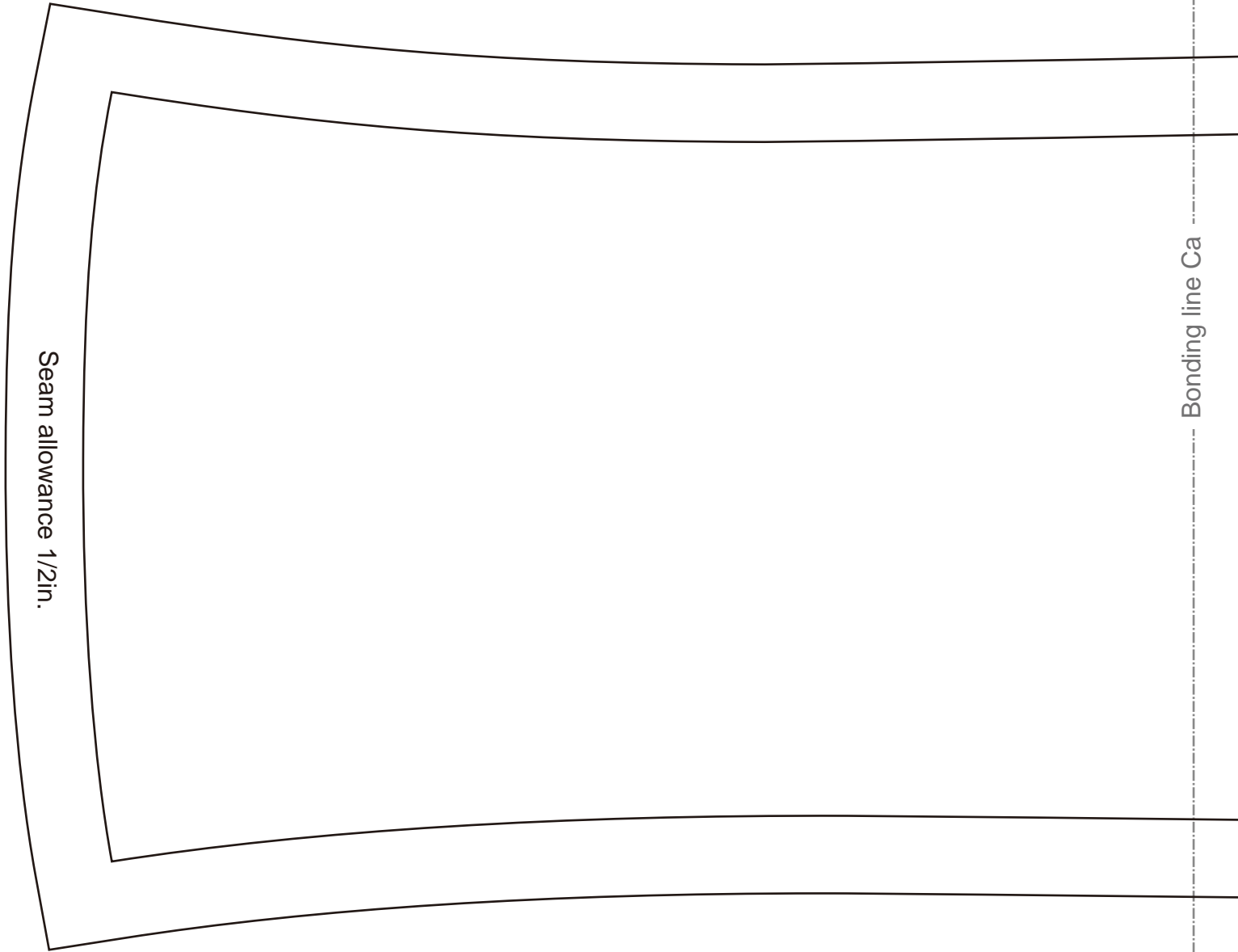


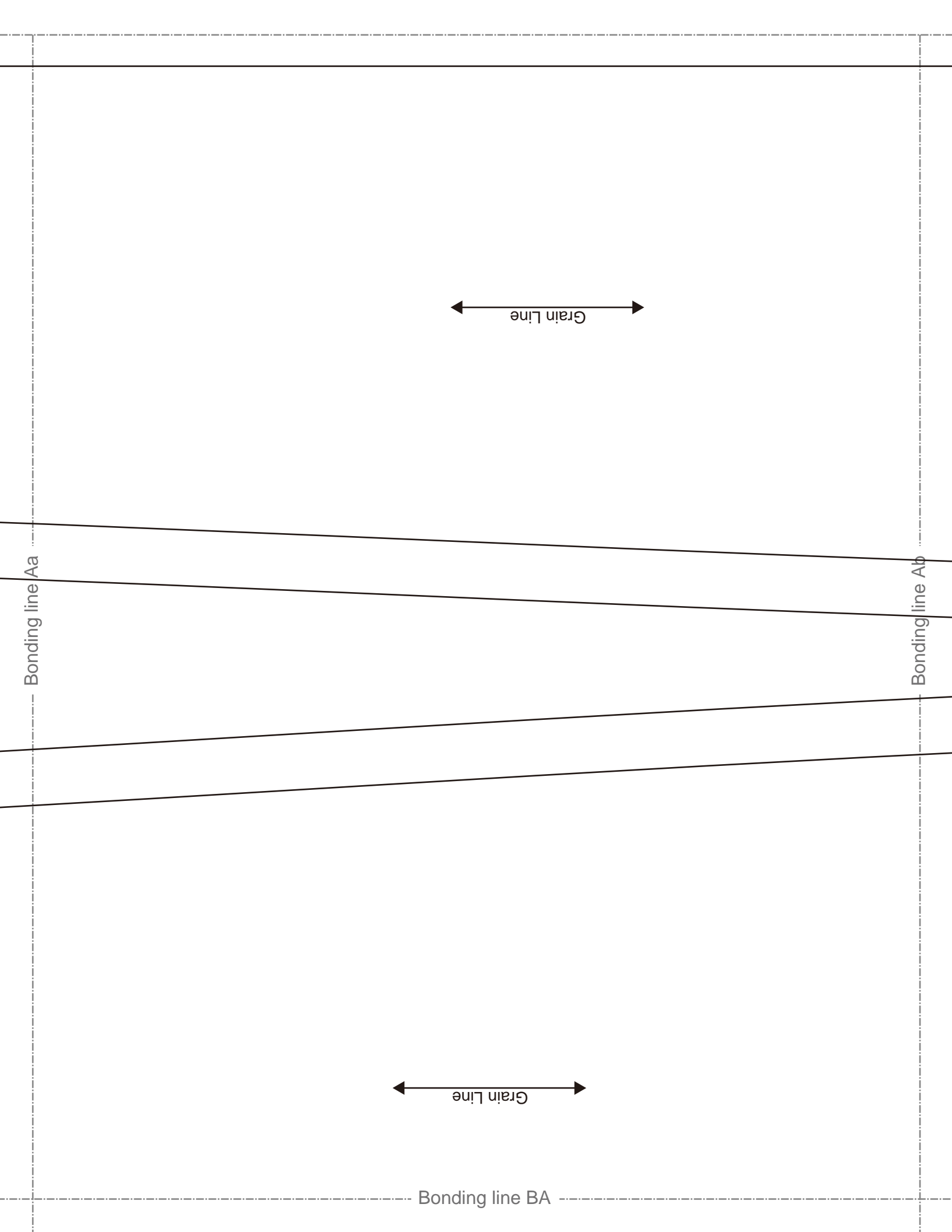
Bonding line AB

Bonding line Ca

Seam allowance 1/2in.

Bonding line AC





Grain Line

Bonding line Aa

Bonding line Ab

Grain Line

Bonding line BA

Bonding line BA

Bonding line Ba

Bonding line Bb



Grain Line

Bonding line BB

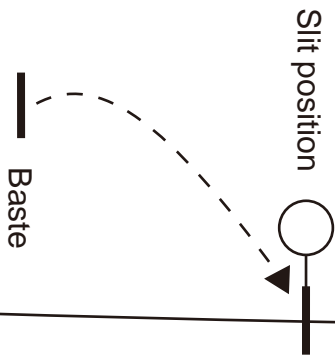
Bonding line BB

Bonding line Ca

Bonding line Cb



Bonding line BC



Bonding line Ab

Bonding line Ac

Bonding line CA

Bonding line CA

Bonding line Bb

Bonding line Bc



**DRCOS**  
SITE <http://dr-cos.info/en/>, <http://dr-cos.com/fp>  
MAIL [info@dr-cos.com](mailto:info@dr-cos.com)  
Twitter [https://twitter.com/dr-cos\\_com](https://twitter.com/dr-cos_com)  
facebook <https://www.facebook.com/drcoscom>

Bonding line CB



Bonding line CB

Bonding line Cb

Bonding line Cc



**Mermaidress**  
**Back Body**  
**two sheets**

Bonding line CC

Symmetry



**Mermaidress  
Front Body  
one sheets**



Bonding line Ac

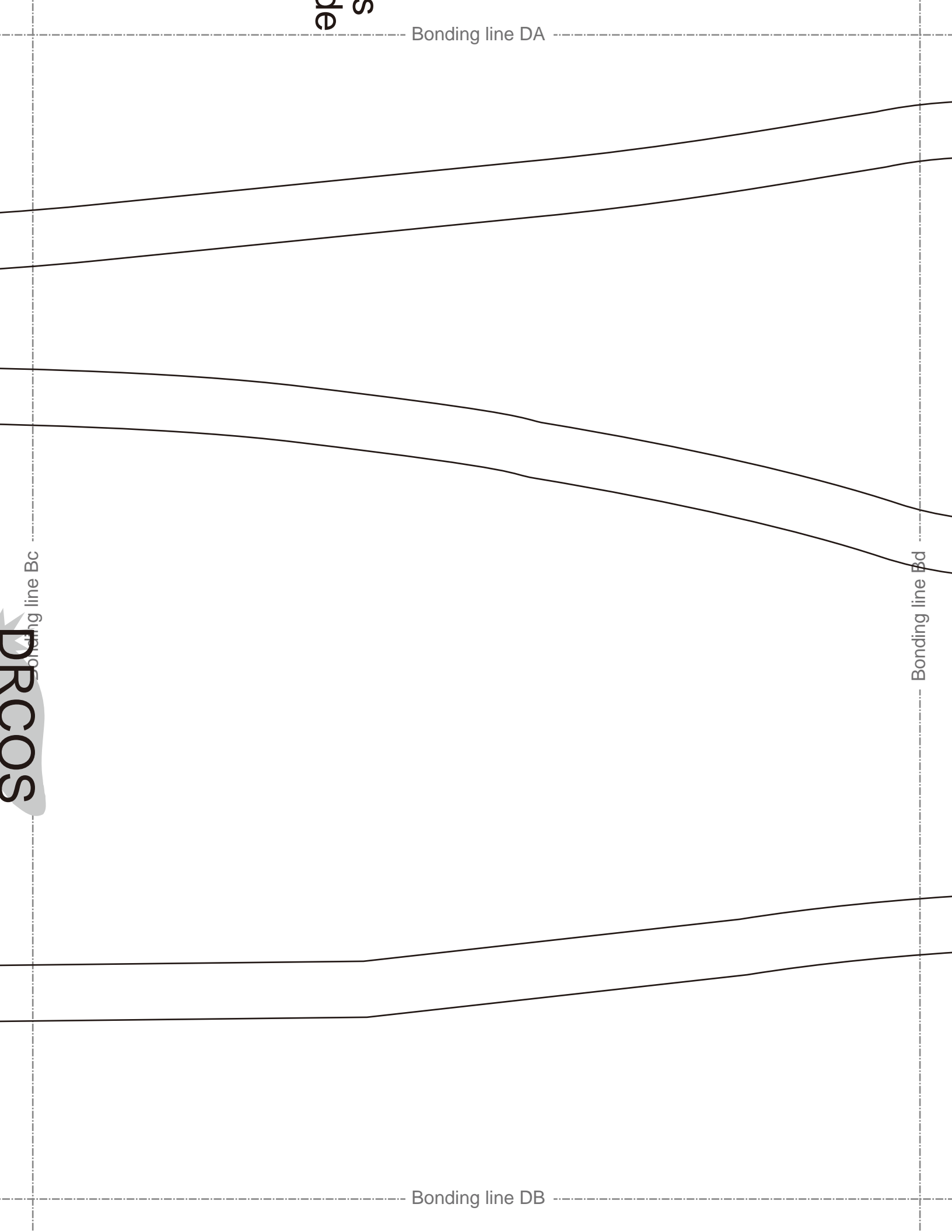
Bonding line Ad

**Mermaidress  
Front Body Side  
two sheets**



Bonding line DA

DRCOS



side

Bonding line DA

Bonding line Bc

Bonding line Bd

Bonding line DB

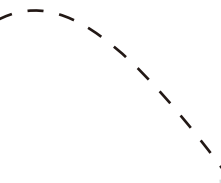
Bonding line DB

Bonding line Cc

Bonding line Cd



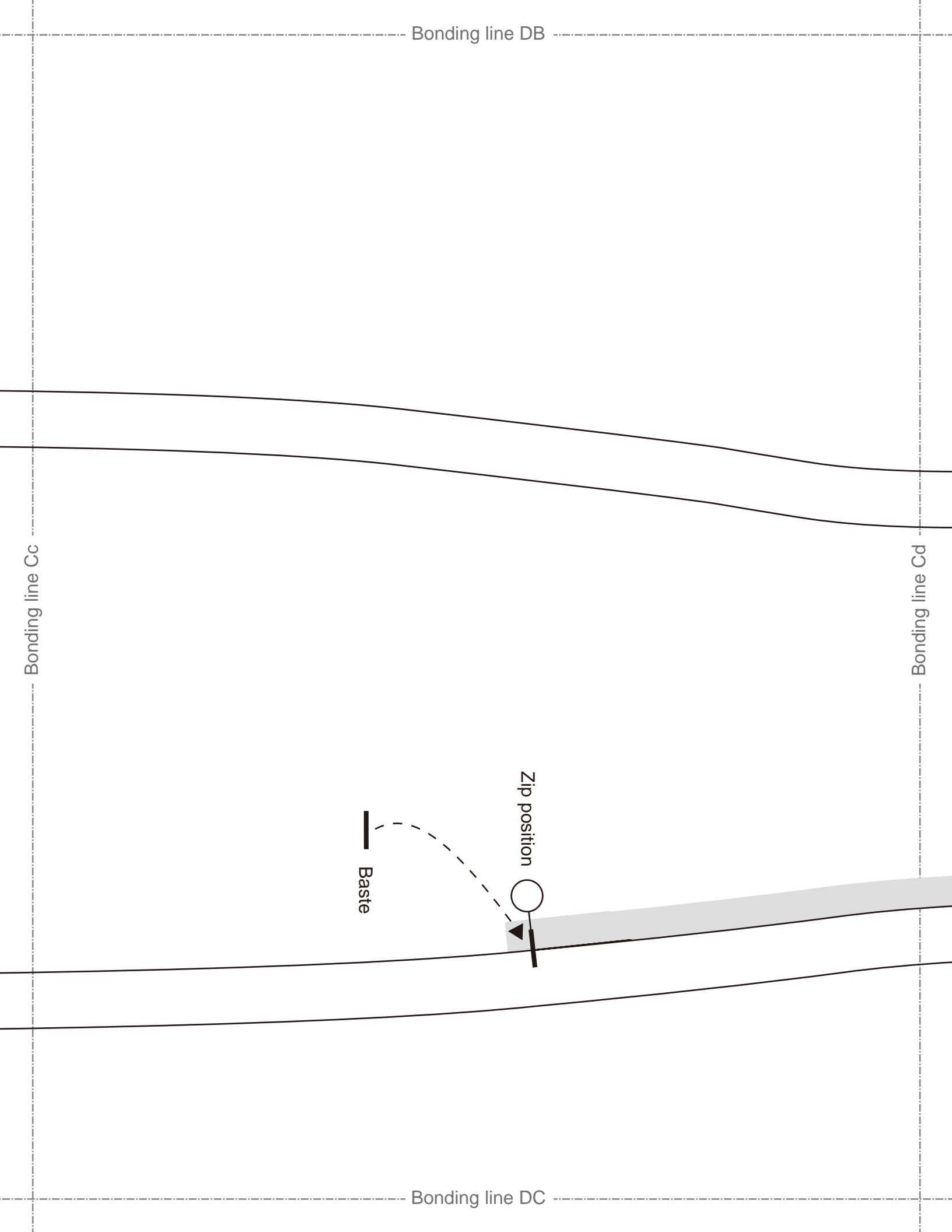
Baste



Zip position



Bonding line DC



Bonding line Ad

Bonding line Ae



**DRCOS**  
SITE <http://dt-cos.info/en> <http://dt-cos.com/fp>  
MAIL [info@dt-cos.com](mailto:info@dt-cos.com)  
TWITTER [https://twitter.com/@drcos\\_com](https://twitter.com/@drcos_com)  
FACEBOOK <https://www.facebook.com/drcoscom>

Bonding line EA

Bonding line EA

Bonding line Bd

Bonding line Be

**Mermaiddress  
Back Body Side  
two sheets**



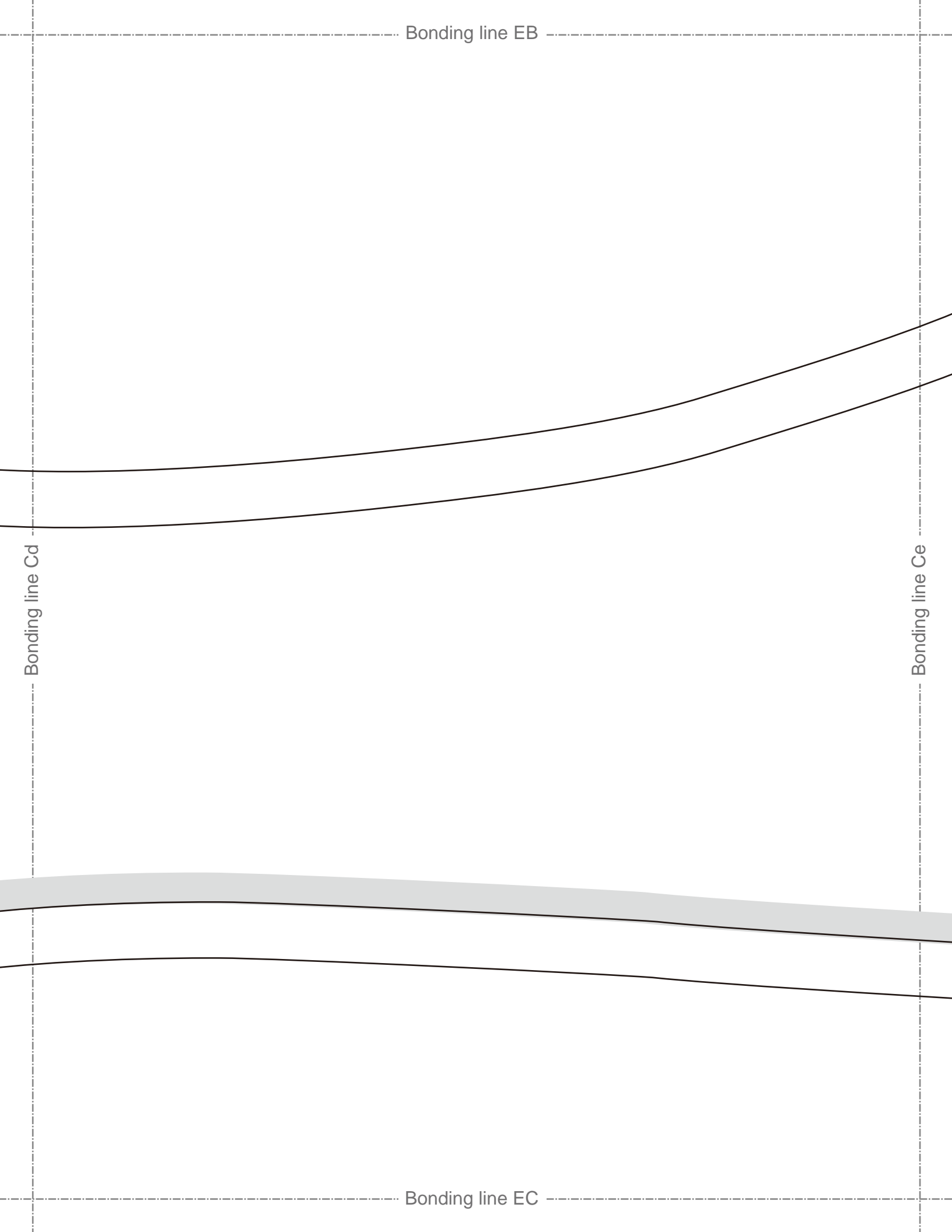
Bonding line EB

Bonding line EB

Bonding line Cd

Bonding line Ce

Bonding line EC



Bonding line Ae

Bonding line Af

Facing Line

**DRCOS**  
SITE <http://dr-cos.info/en> <http://dr-cos.com/fp>  
MAIL [info@dr-cos.com](mailto:info@dr-cos.com)  
Twitter [@drcos\\_com](https://twitter.com/@drcos_com)  
facebook <https://www.facebook.com/drcoscom>

Bonding line FA



Bonding line FA

Bonding line Be

Front

D  
SITE http  
MAIL inf  
Twitter h  
facebook

line Bf



Mermaid  
Sleeve  
two she

Bonding line FB

S

Bonding line FB

Bonding line Ce

Bonding line Cf

**DRCOS**  
SITE <http://dr-cos.info/en>, <http://dr-cos.com/lp>  
MAIL [info@dr-cos.com](mailto:info@dr-cos.com)  
Twitter <https://twitter.com/dr-cos>  
facebook <https://www.facebook.com/drcoscom>

Facing Line

Bonding line FC

Bonding line Af

**DRCOS**

SITE <http://dr-cos.info/en> <http://dr-cos.com/jp>  
MAIL [info@dr-cos.com](mailto:info@dr-cos.com)  
Twitter <https://twitter.com/drcos.com>  
facebook <https://www.facebook.com/drcos.com>

Seam allowance 1/2in.



**Mermaidress**

**Facing**

**One sheets**

**Fusible interlining**

**One sheets**

Grain Line

Bonding line GA

Bonding line GA

# DRCOS

SITE [http://dr-cos.info\(en\)](http://dr-cos.info(en)) [http://dr-cos.com\(jp\)](http://dr-cos.com(jp))  
MAIL [info@dr-cos.com](mailto:info@dr-cos.com)  
Twitter [https://twitter.com/drcos\\_com](https://twitter.com/drcos_com)  
facebook <https://www.facebook.com/drcoscom>

Line Bf



address  
eeve  
sheets



Back

Seam allowance 1/2in.

Bonding line GB

