

[Home](#)

[Back to Mermaaddress page](#)

Seam allowance 1/2in.

Bonding line Aa

Seam allow

Bonding line AA

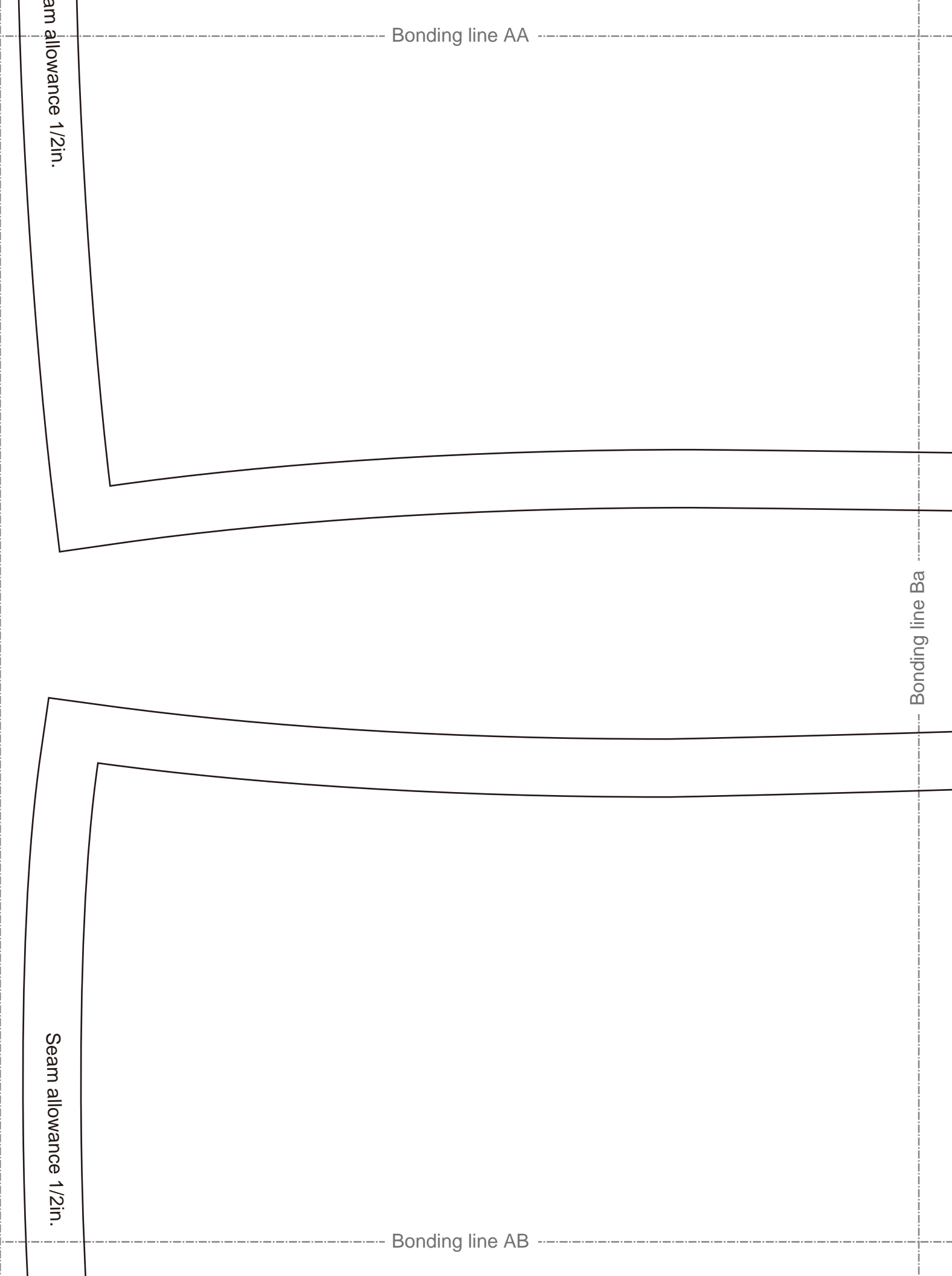
Bonding line AA

Seam allowance 1/2in.

Bonding line Ba

Seam allowance 1/2in.

Bonding line AB



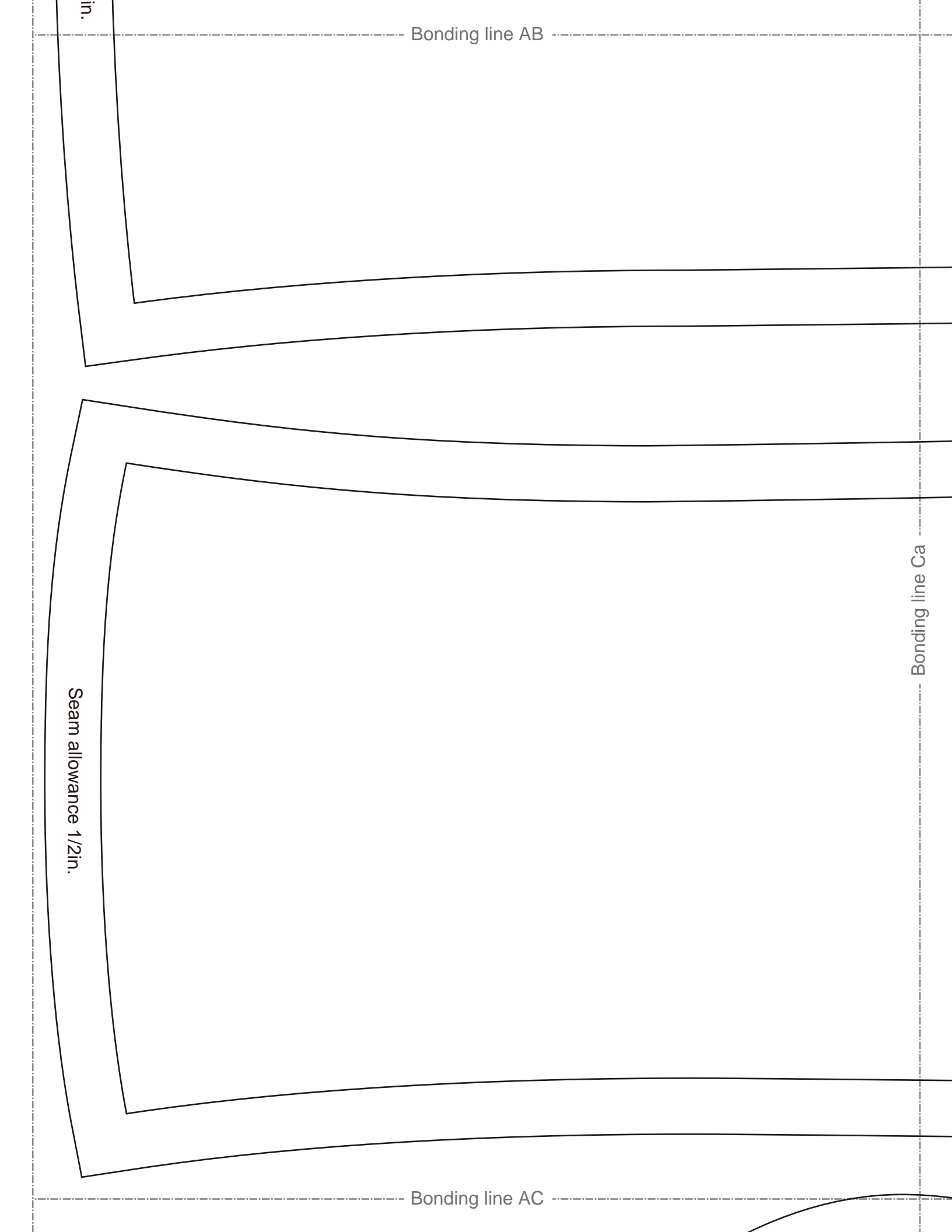
Bonding line AB

in.

Bonding line Ca

Seam allowance 1/2in.

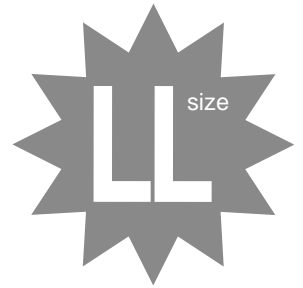
Bonding line AC



Bonding line AC

**DRCCO**

SITE <http://dr-cos.info/en> ht  
MAIL [info@dr-cos.com](mailto:info@dr-cos.com)  
Twitter <https://twitter.com/@d>  
facebook <https://www.faceboo>



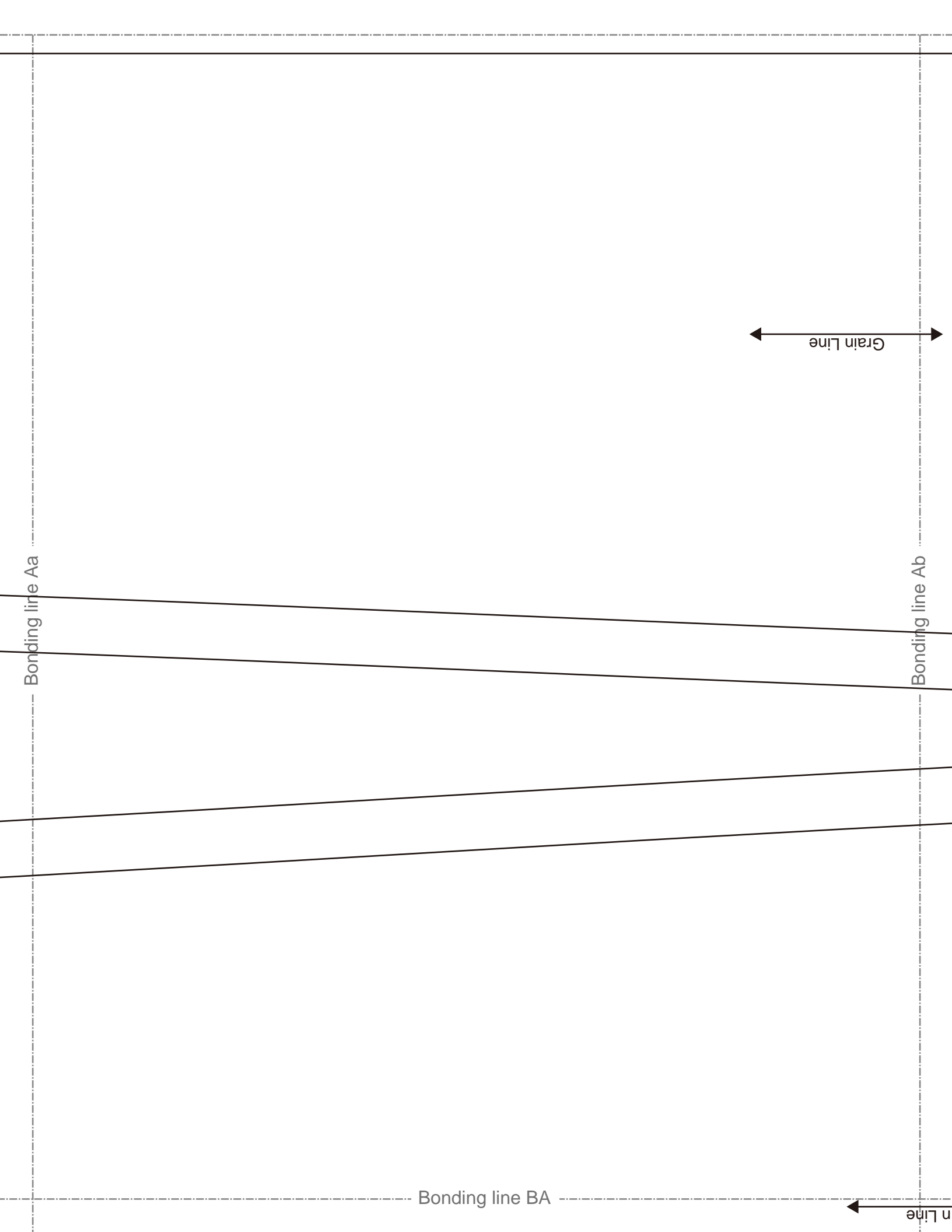
Bonding line Da

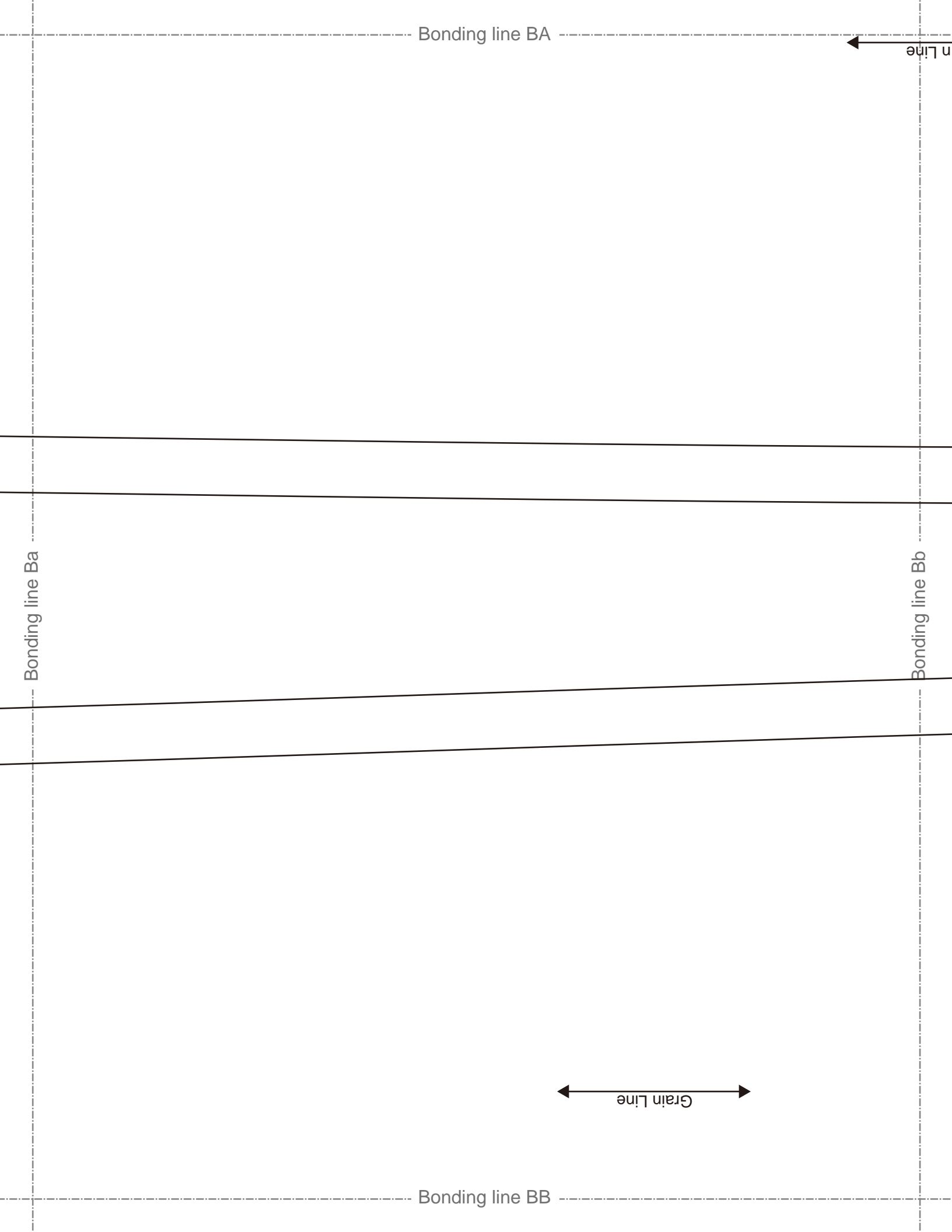
Front

Mermaidress  
Sleeve  
two sheets

Seam allow

Bonding line AD

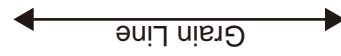




Bonding line BB

Bonding line Ca

Bonding line Cb



Bonding line BC

**RCOS**  
r-cos.info(en) http://dr-cos.com(jp)  
dr-cos.com  
/twitter.com/@drcos\_com  
os://www.facebook.com/drcoscom

Bonding line BC

Bonding line Da

Bonding line Db

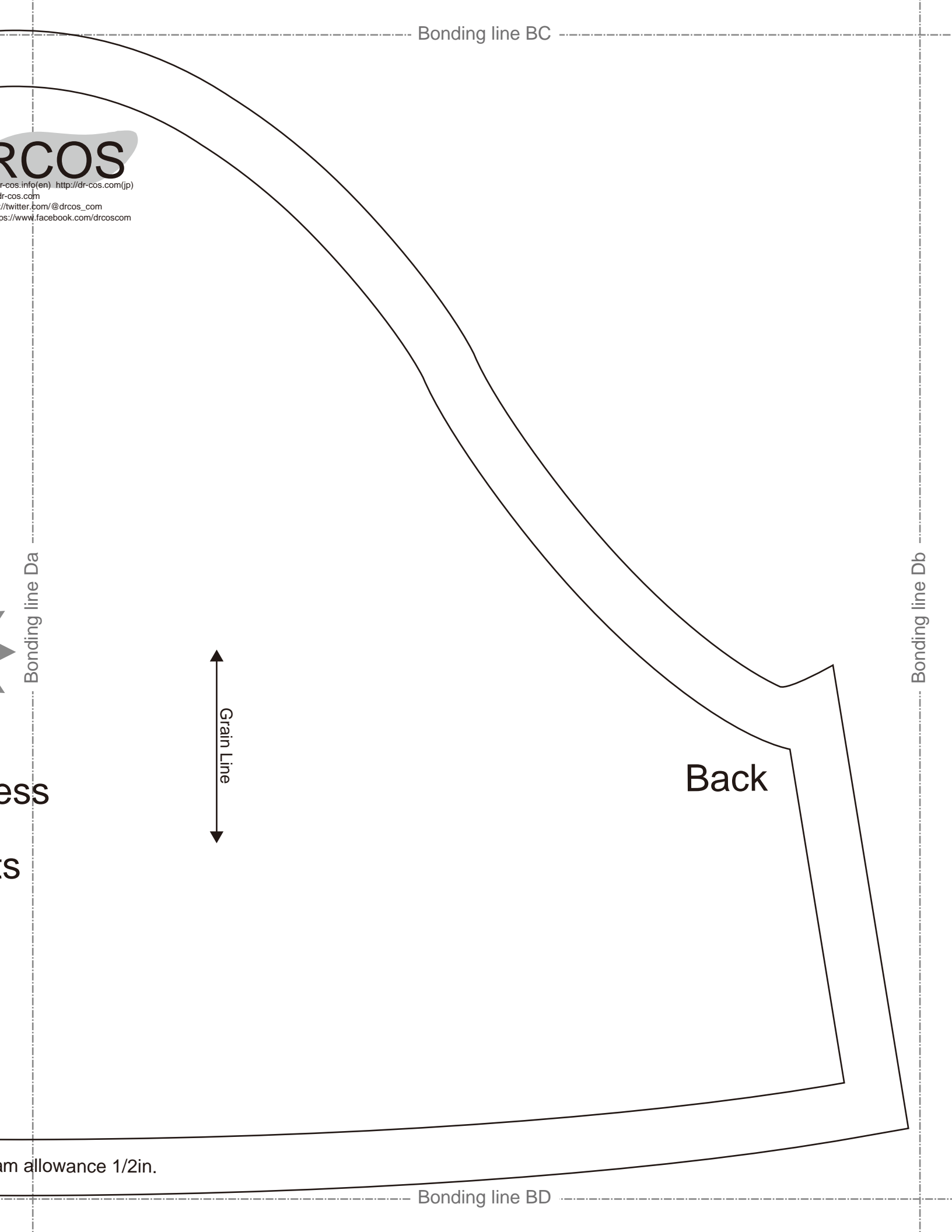
Grain Line

Back

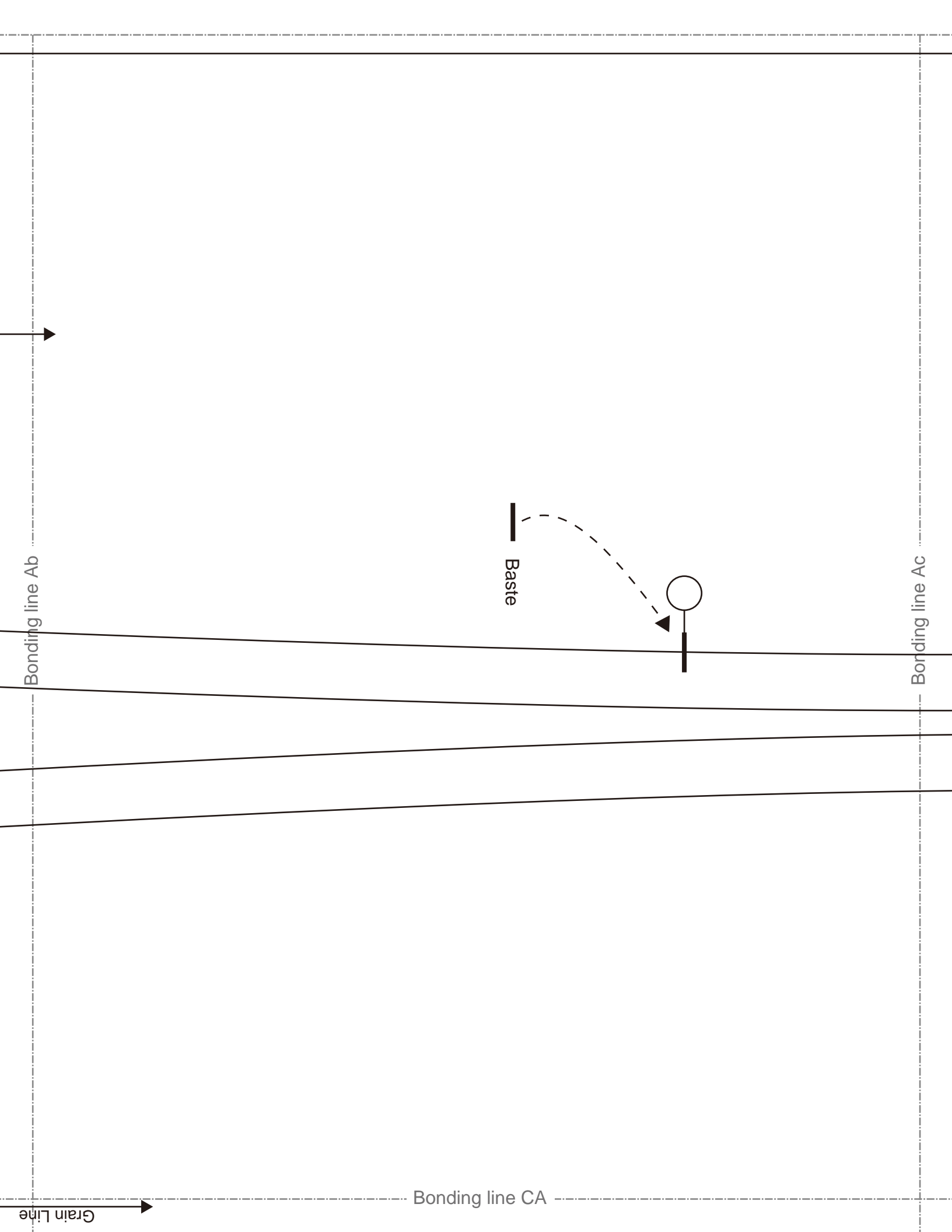
ess  
S

am allowance 1/2in.

Bonding line BD







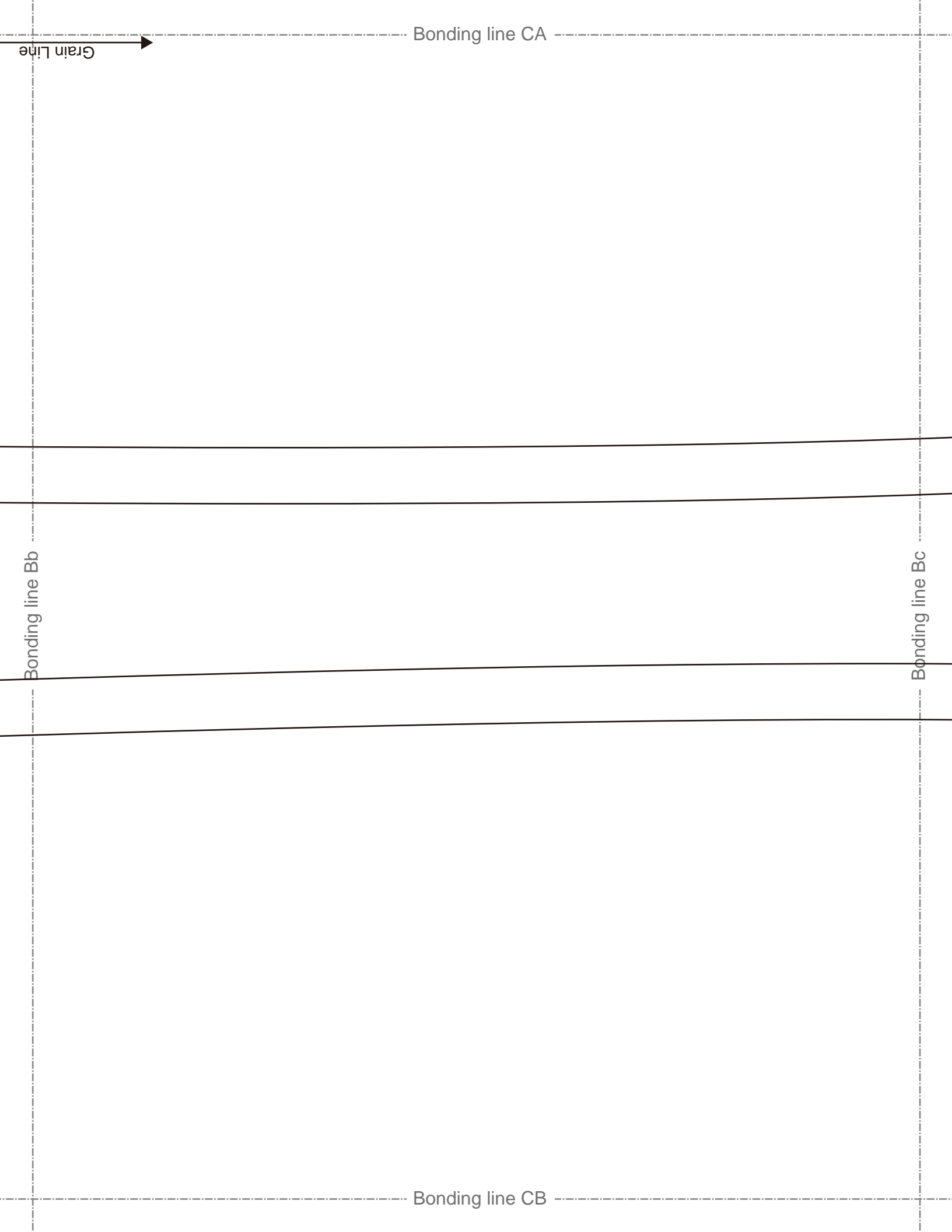
Grain Line →

Bonding line CA

Bonding line Bb

Bonding line Bc

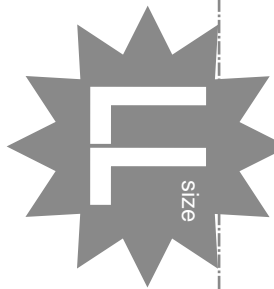
Bonding line CB



Bonding line CB

Bonding line Cb

Bonding line Cc



**Mermaidress**  
**Back Body**  
**two sheets**

Bonding line CC



**Mermaidress**  
**Front Body**  
**one sheets**



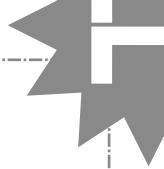
Bonding line Ad

Bonding line Ac



**Mermaidl**  
**Front Body**  
**two shee**

Bonding line DA



address  
body Side  
sheets

Bonding line DA

Bonding line Bc

Bonding line Bd

Bonding line DB



SITE <http://dr-cos.info/en> <http://dr-cos.com/tp>  
 MAIL [info@dr-cos.com](mailto:info@dr-cos.com)  
 Twitter <https://twitter.com/dr-cos>  
 facebook <https://www.facebook.com/drcoscom>

Bonding line DB

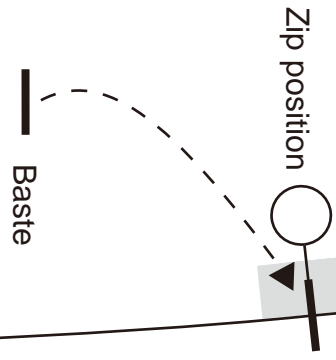
Bonding line Cc

Bonding line Cd



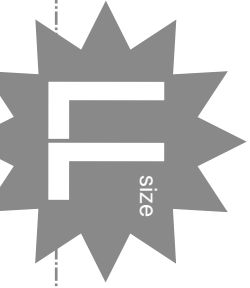
size

Bonding line DC



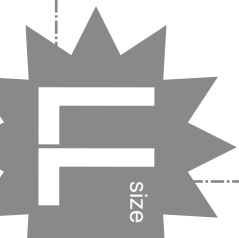
Baste

Zip position

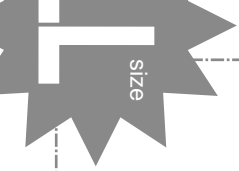


Bonding line Ad

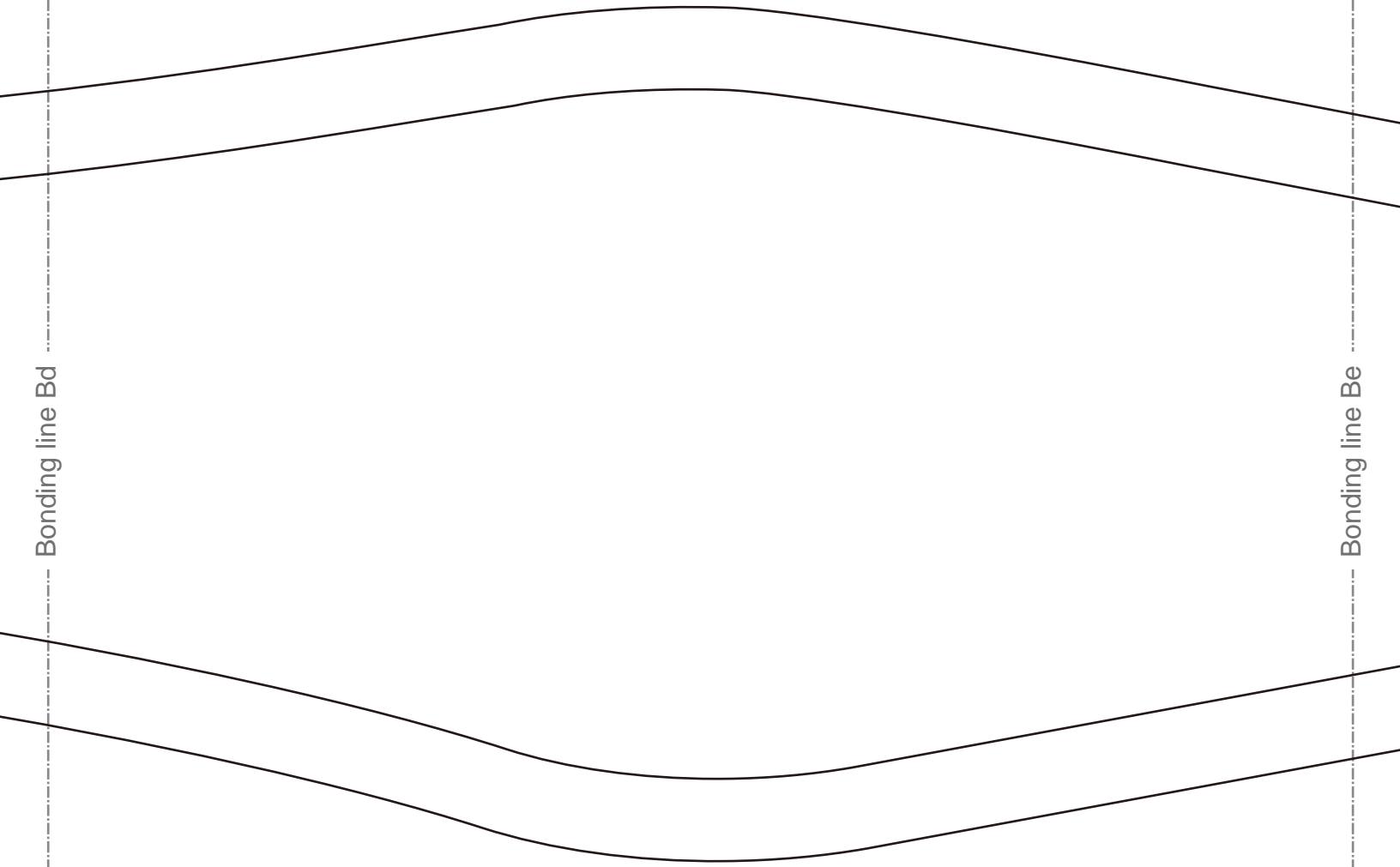
Bonding line Ae



Bonding line EA



Bonding line EA



Bonding line Bd

Bonding line Be



Mermaidress  
Back Body Side  
two sheets

Bonding line EB





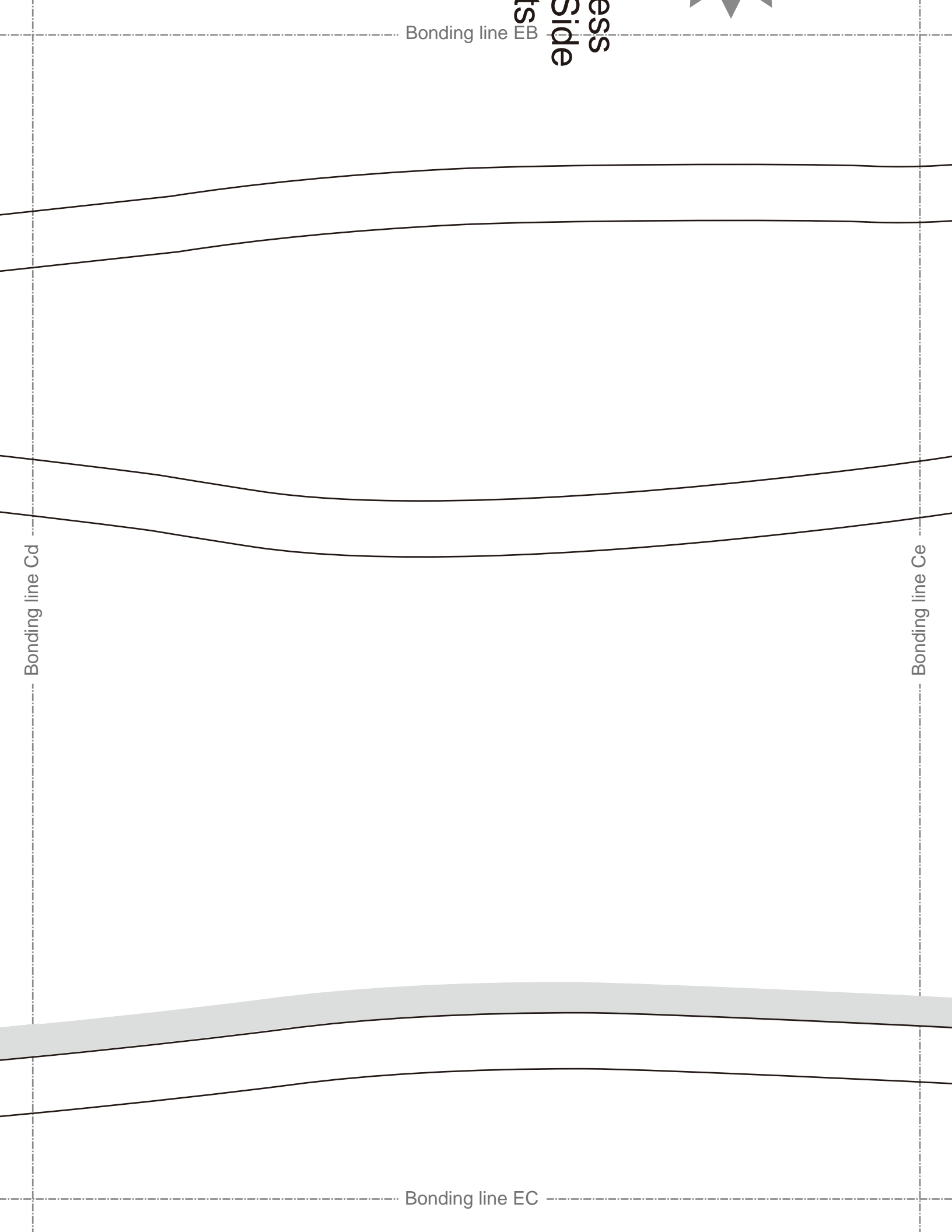
ess  
Side  
ts  
EB

Bonding line EB

Bonding line Cd

Bonding line Ce

Bonding line EC



Bonding line Ae

Bonding line Af

**DRCOS**  
SITE <http://drcos.info/en> <http://drcos.co>  
MAIL [info@drcos.com](mailto:info@drcos.com)  
T Twitter <https://twitter.com/drcos>  
facebook <https://www.facebook.com/drcos>

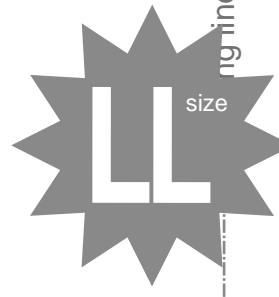
Bonding line FA

Bonding line FA

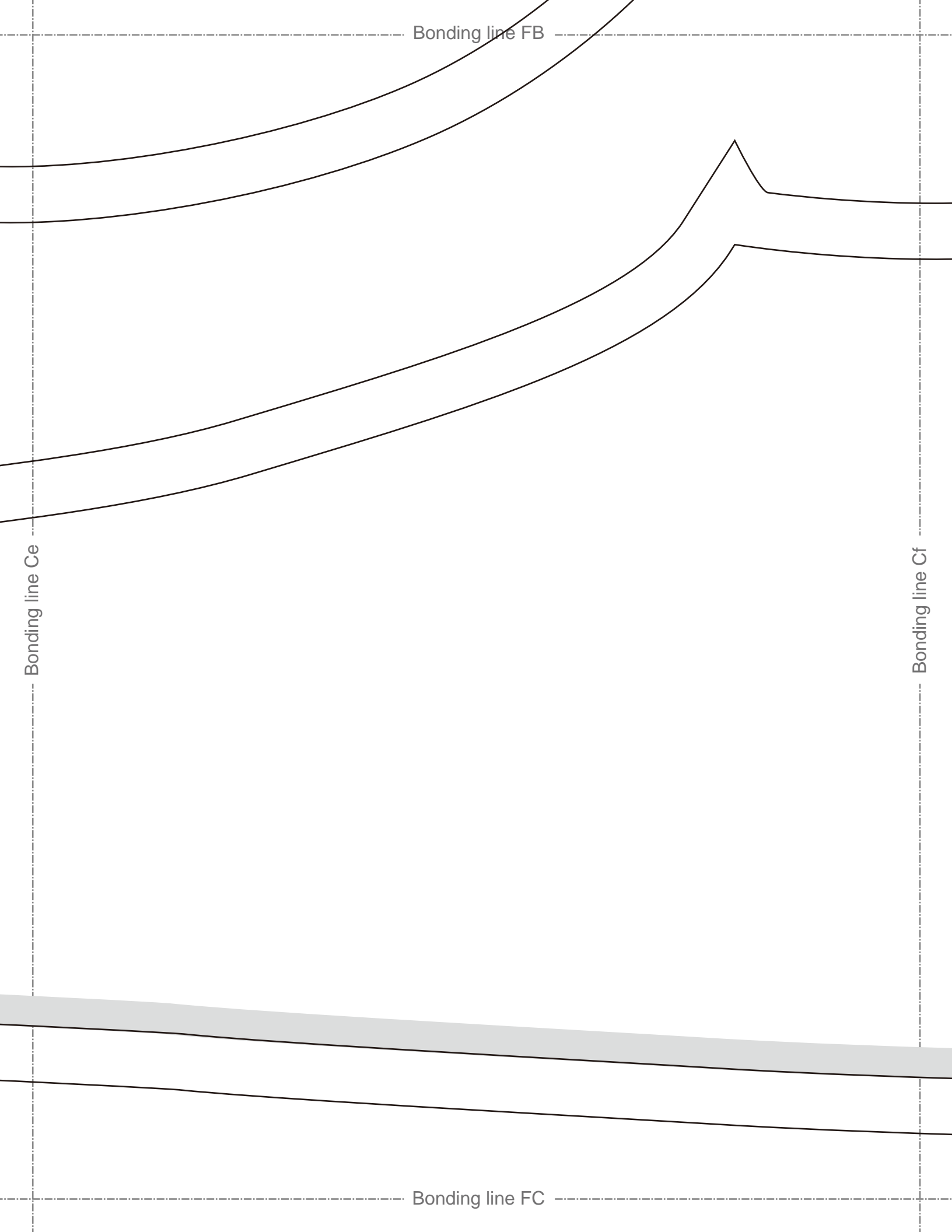
Bonding line Be

Bonding line FB

Grain Line



ingine/Bf



Bonding line Af

Facing Line



**DRCOS**  
SITE <http://dr-cos.info/en> <http://dr-cos.com/jp>  
MAIL [info@dr-cos.com](mailto:info@dr-cos.com)  
Twitter [@drcos\\_com](https://twitter.com/@drcos_com)  
facebook <https://www.facebook.com/drcoscom>

Bonding line GA

ingine/Bf  
size

Seam allowance 1/2in.

**DRCOS**  
SITE <http://dr-cos.info/en> <http://dr-cos.com/jp>  
MAIL [info@dr-cos.com](mailto:info@dr-cos.com)  
Twitter [@drcos\\_com](https://twitter.com/@drcos_com)  
facebook <https://www.facebook.com/drcoscom>

**Mermaidress**  
**Facing**  
**One sheets**  
**Fusible interlining**  
**One sheets**

Seam allowance 1/2in.

**DRCOS**

SITE <http://dr-cos.info/en> <http://dr-cos.com/jp>  
MAIL [info@dr-cos.com](mailto:info@dr-cos.com)  
Twitter [@drcos\\_com](https://twitter.com/@drcos_com)  
facebook <https://www.facebook.com/drcoscom>

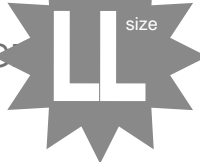
**Vest**  
**Facing**  
**two sheets**  
**Fusible interlining**  
**two sheets**

Bonding line GA



Grain Lin

Interlining  
two sheets



Grain Line

SITE <http://dr-cos.info/en> <http://dr-cos.com/fp>  
MAIL [info@dr-cos.com](mailto:info@dr-cos.com)  
TWITTER <https://twitter.com/@drccos>  
FACEBOOK <https://www.facebook.com/drccoscom>

**DRCCOS**

Facing Line

Bonding line Cf

Bonding line GC