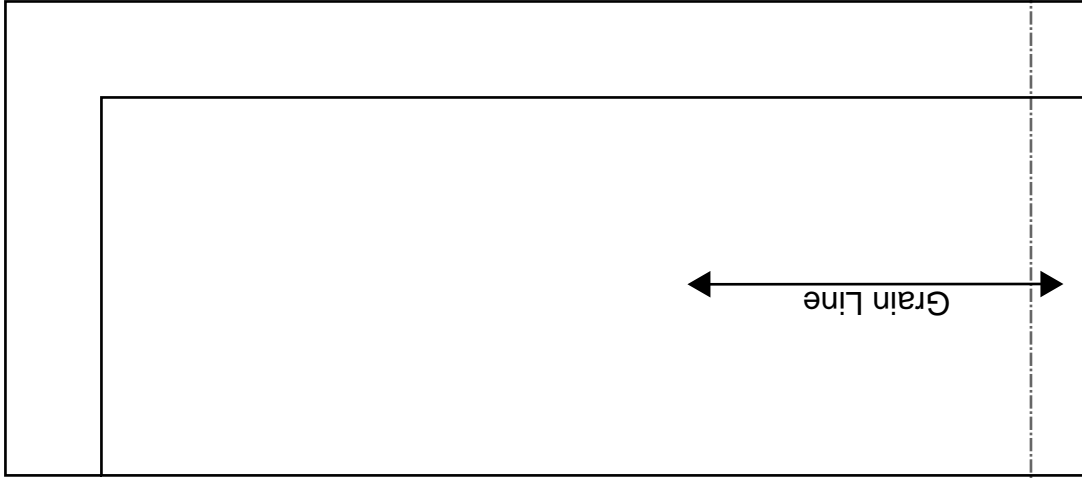


[Home](#)
[Back to Hoodie3 page](#)



Grain Line



Bonding line Aa

Grain Line

Bonding line AA

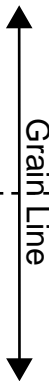
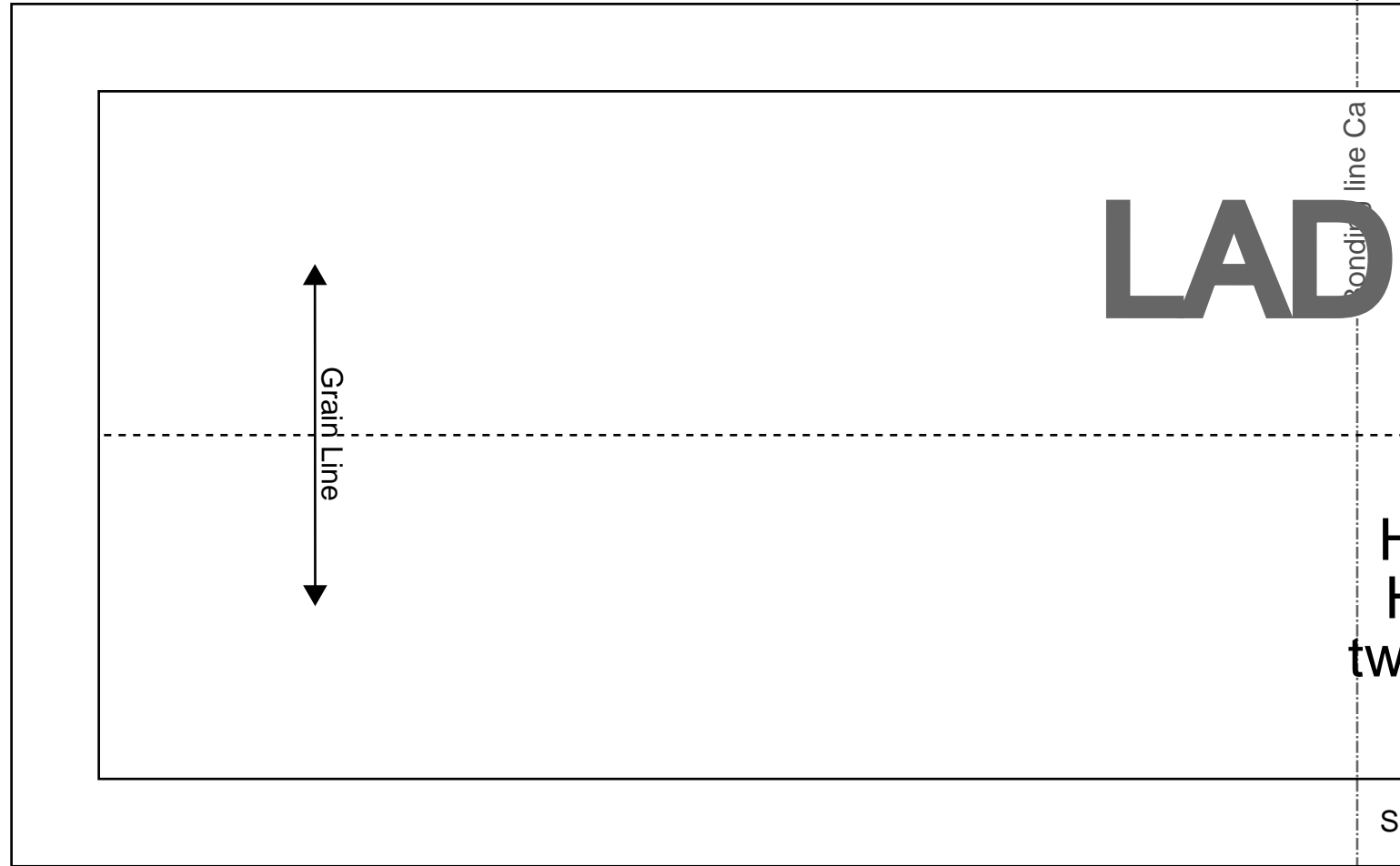
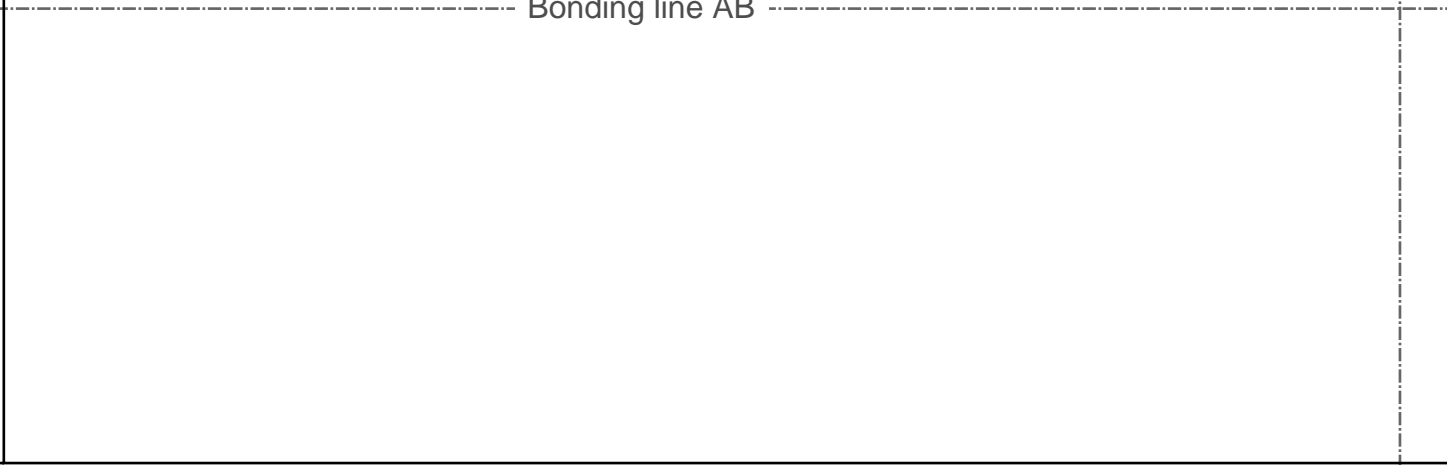
Bonding line AA



Bonding line AB

Bonding line Ba

Bonding line AB



Grain Line

LAD

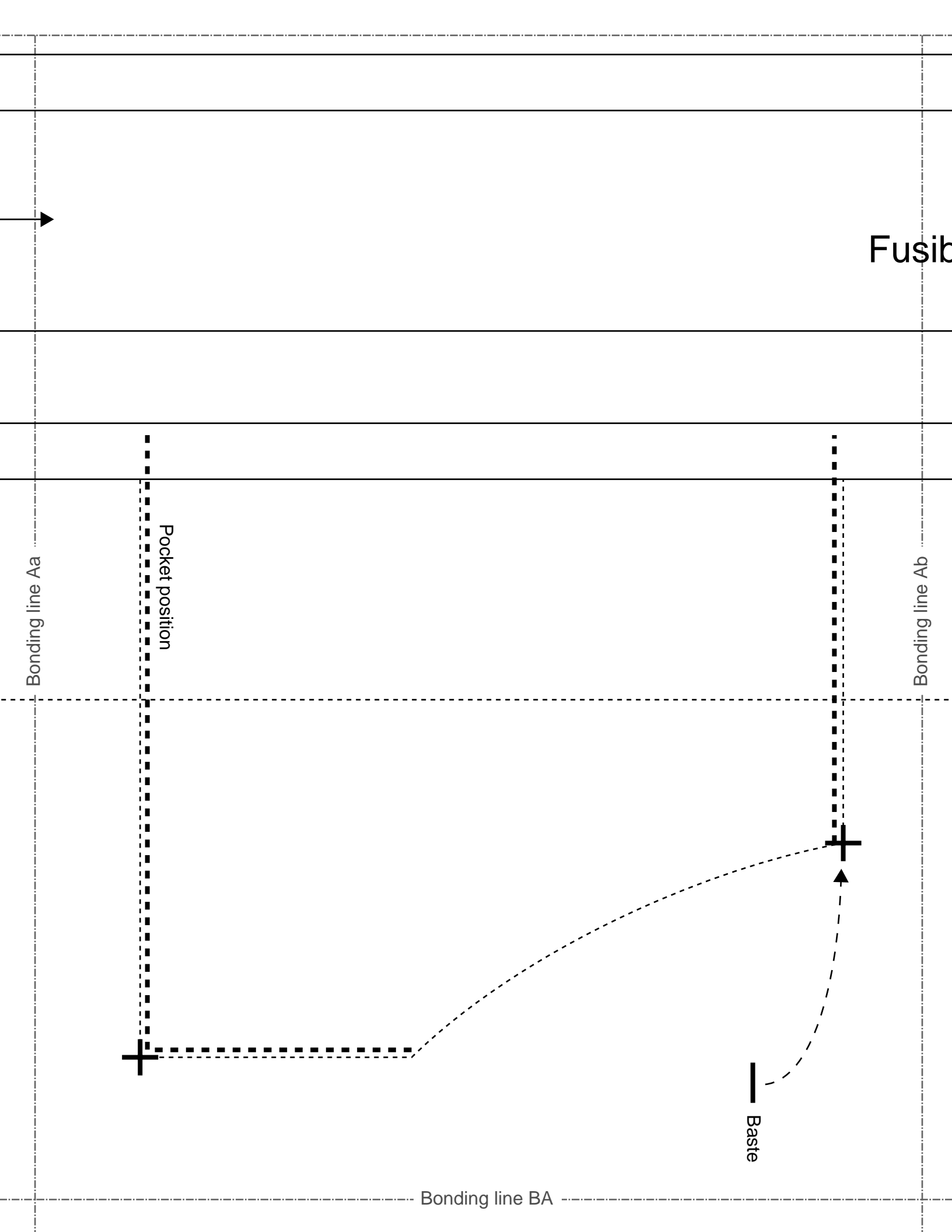
Bonding line Ca

H
H
tw

S

Bonding line AC



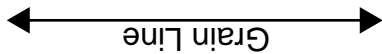


Bonding line BA

Seam allowance 1/2in.

Bonding line Ba

Bonding line Bb



Grain Line

Bonding line BB

Bonding line BB

Symme

Bonding line Ca



Bonding line Cb

Hoodie3
Hem rib
two sheets



Seam allowance 1/2in.

Bonding line BC

Seam allowance 1/2in.

Hoodie3
Facing two sheets
Visible interlining two sheets

Bonding line Ab

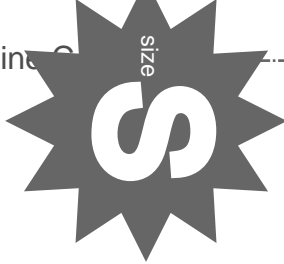
Bonding line Ac

Hoodie3
Front Body
two sheets

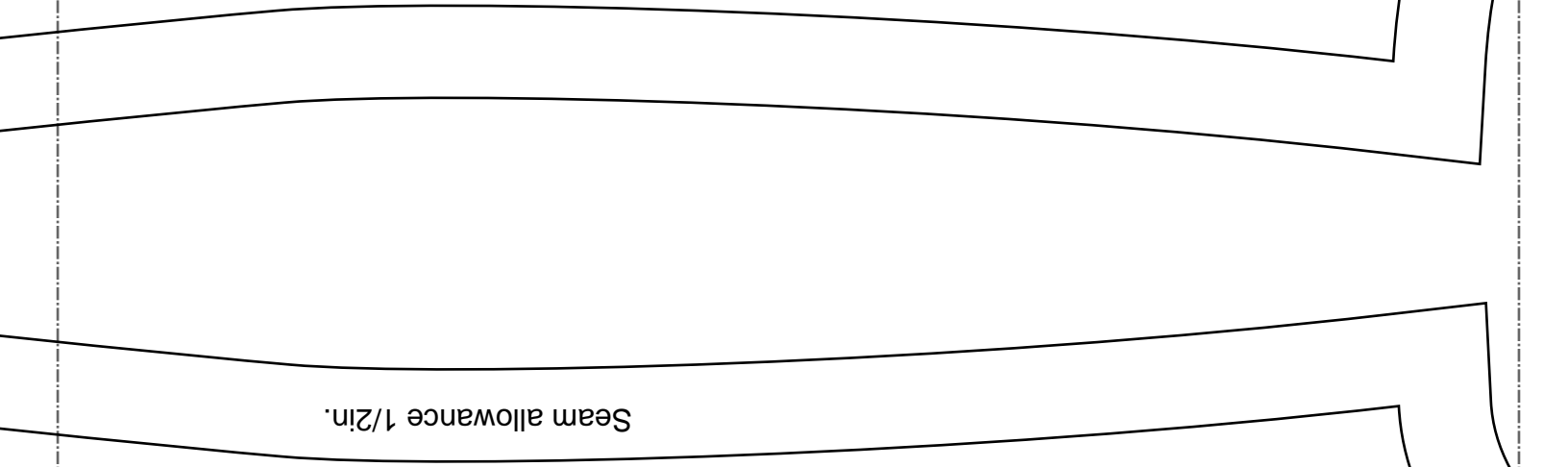
LADIES'S

Bonding line C

Size



Bonding line C



Seam allowance 1/2in.

Bonding line Bb

Bonding line Bc



Bonding line



Hoodies 3
Back Body
one sheets

Bonding line



Symmetry

Bonding line Cb

Bonding line Cc

LADIES

Grain Line

Hoodie3
Cuffs rib
two sheets

Seam allowance 1/2in.

RCOS

<http://dr-cos.info/en> <http://dr-cos.com/jp>
info@dr-cos.com
https://twitter.com/drcos_com
<https://www.facebook.com/drcoscom>

Bonding line CC

LADIES'S

size

Bonding line Ac

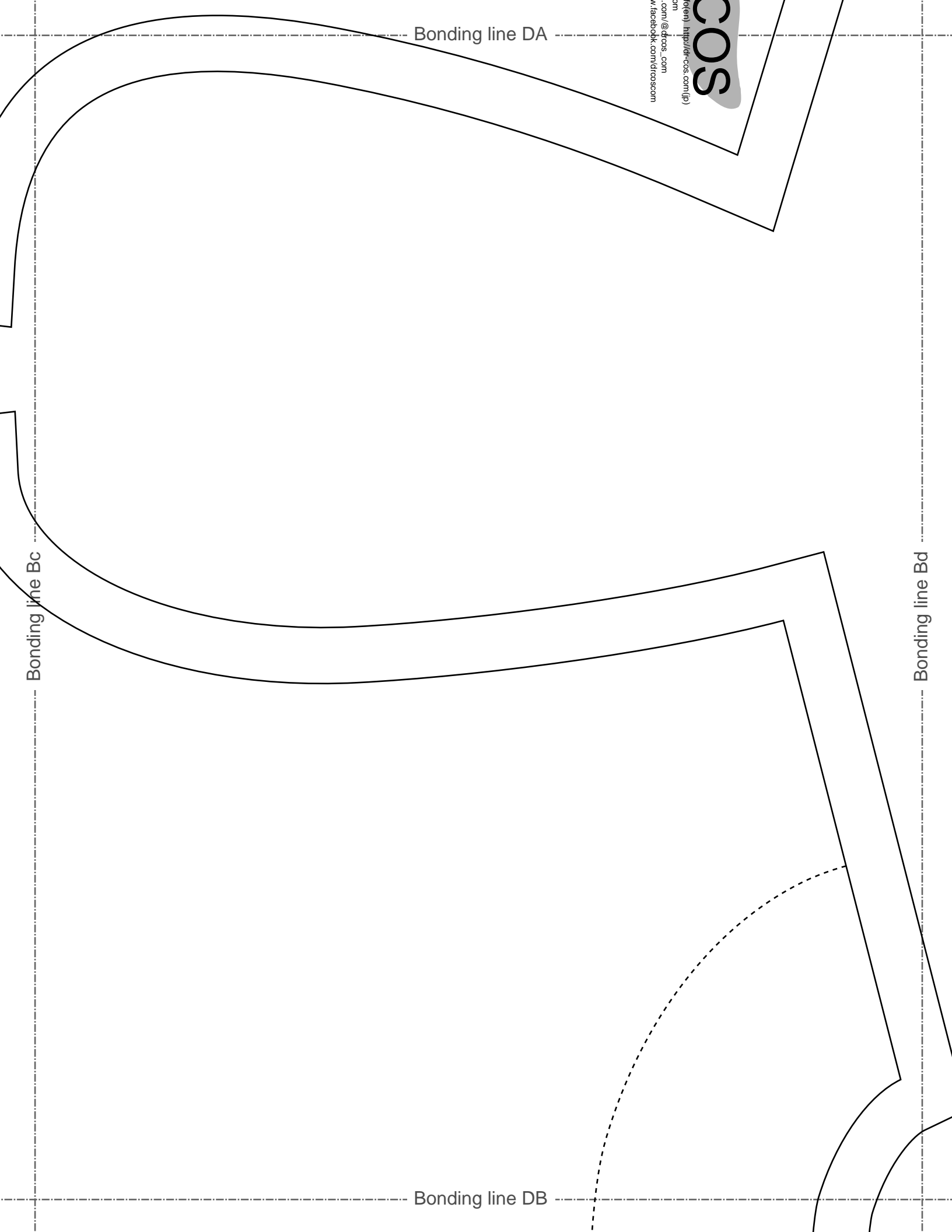
Bonding

Facing Line

Bonding line DA

DRCO
SITE <http://dr-cos.info/en/>
MAIL info@dr-cos.com
Twitter <https://twitter.com/drco>
facebook <https://www.facebook.com/drco>

DRCO
SITE <http://dr-cos.info/en/>
MAIL info@dr-cos.com
Twitter <https://twitter.com/drco>
facebook <https://www.facebook.com/drco>



Bonding line DA

uc
com
@drcos.com
facebook.com/drcoscom
(http://drcos.com/)

SOS

Bonding line Bc

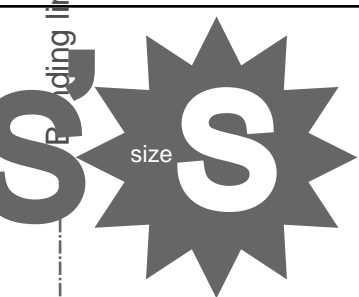
Bonding line Bd

Bonding line DB

Bonding line DB

Facing Line

Bonding line Cc



DRCOS

SITE [http://dr-cos.info\(en\)](http://dr-cos.info(en)) [http://dr-cos.com\(jp\)](http://dr-cos.com(jp))
MAIL info@dr-cos.com
Twitter https://twitter.com/@drcos_com
facebook <https://www.facebook.com/drcoscom>

Bonding line Cd



**Hoodie3
Pocket
two sheets**

DRCOS

SITE [http://dr-cos.info\(en\)](http://dr-cos.info(en)) [http://dr-cos.com\(jp\)](http://dr-cos.com(jp))
MAIL info@dr-cos.com
Twitter https://twitter.com/@drcos_com
facebook <https://www.facebook.com/drcoscom>

Seam allowance 1/2"

Bonding line DC

DRCOS

<http://drcos.info/en>
<http://drcos.com/jp>
drcos@dr-cos.com
<https://twitter.com/drcos>
<https://www.facebook.com/drcoscom>

Bonding line EA

Front

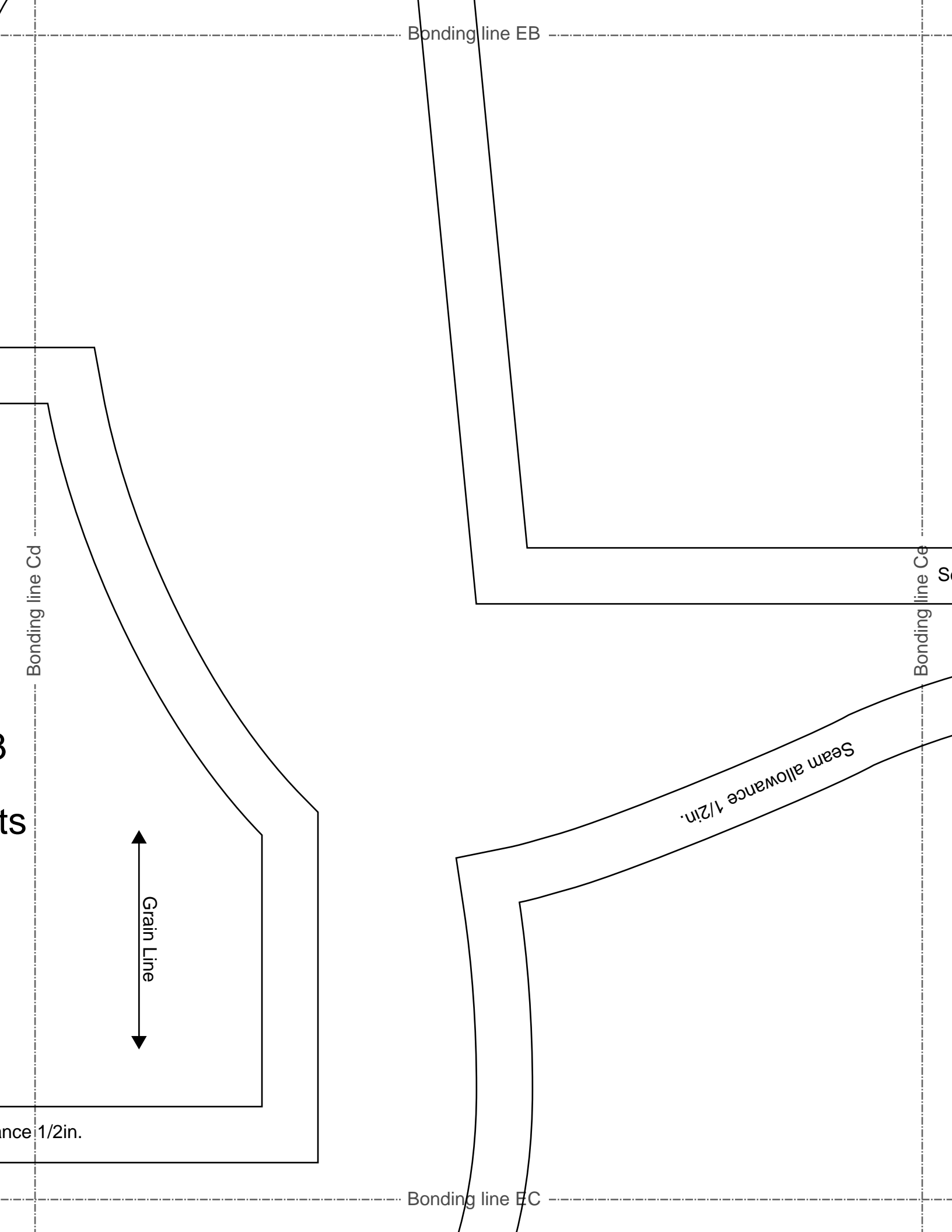
Bonding line Ae

Bonding line EA

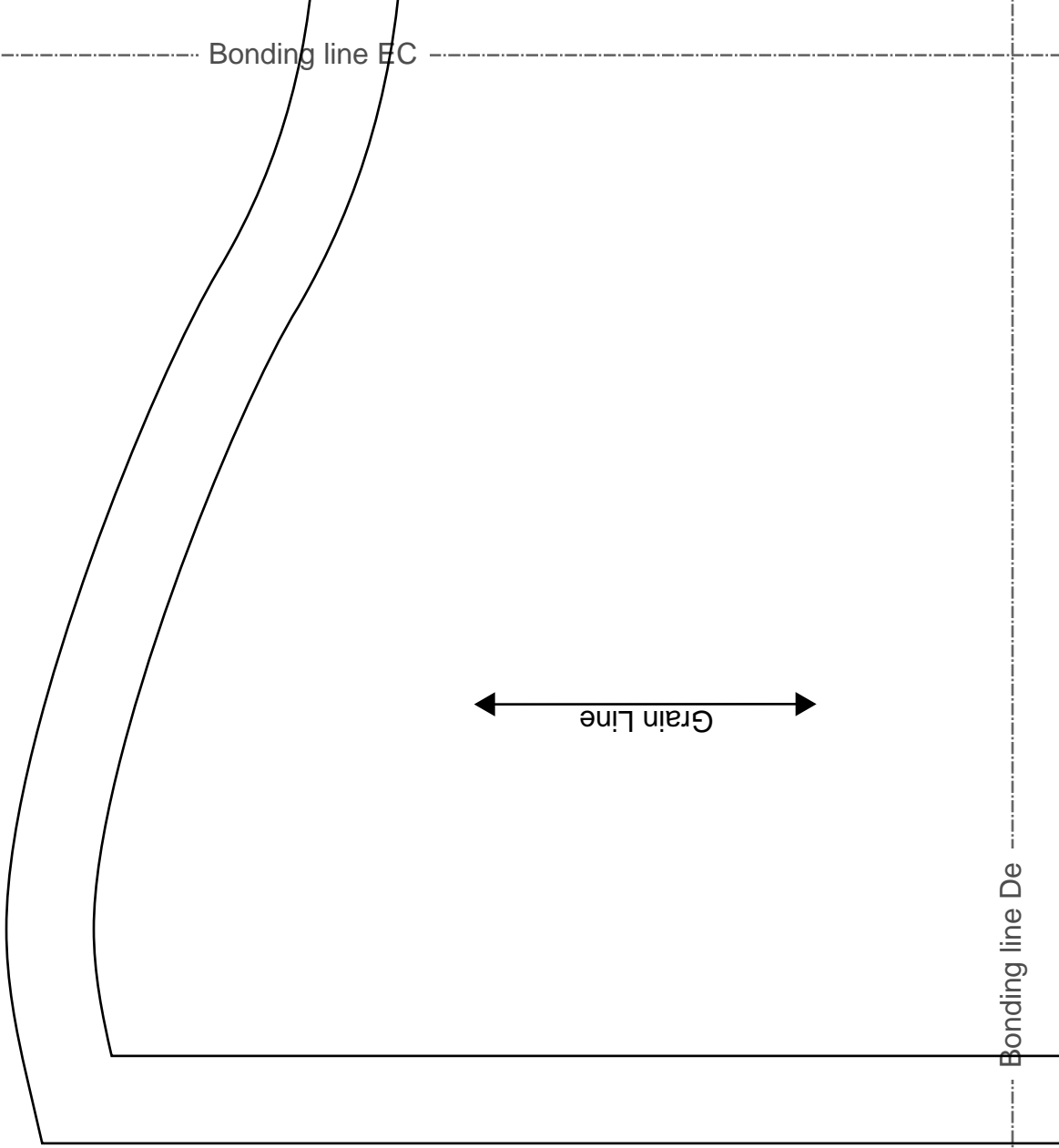
LAD







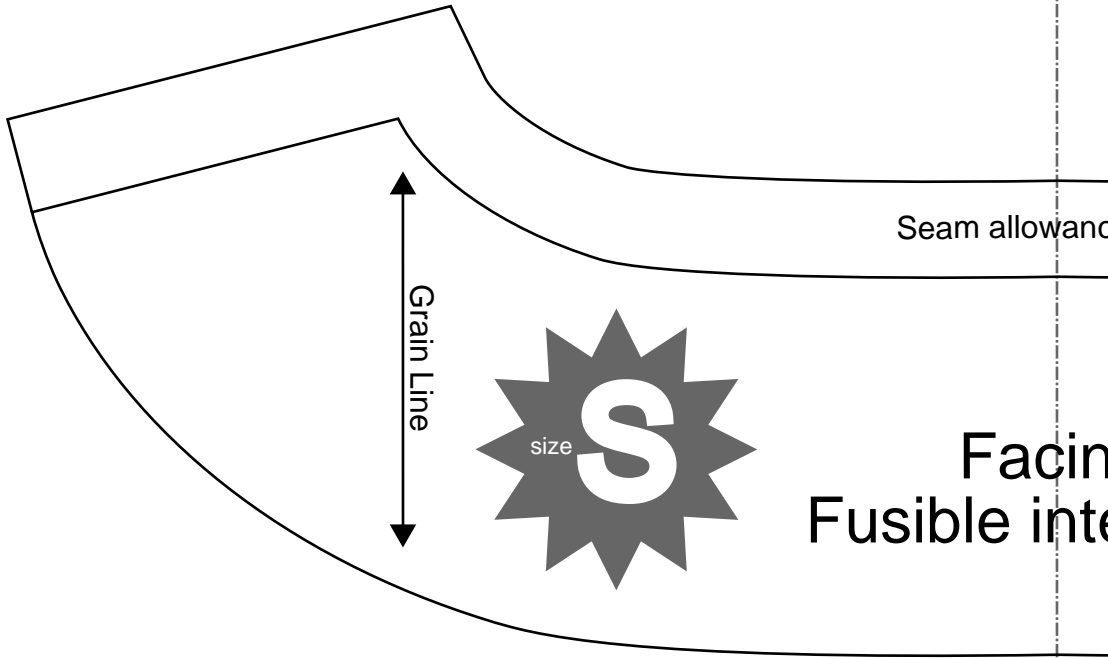
Bonding line EC



Bonding line Dd

Bonding line De

Seam allowance



Bonding line ED

Facing
Fusible inter

DRCOS

SITE <http://dr-cos.info/en> <http://dr-cos.com/jp>

MAIL info@dr-cos.com

Twitter https://twitter.com/@drcos_com

facebook <https://www.facebook.com/drcoscom>

Bonding line Ae

Bonding line Af

Back

NDIES'S size **S**

Bonding line FA

Bonding line FA

Hoodie3
Sleeve
two sheets

Bonding line Be

Bonding line Bf



Bonding line FB

Bonding line FB

Bonding line Ce

Seam allowance 1/2in.

Bonding line Cf

LAD

Bonding line FC

tw

Bonding line FC

DIES'S

size

Hoodies3
Hood
two sheets

DRCOS
SITE <http://dr-cos.info/en> | <http://dr-cos.com/fp>
MAIL info@dr-cos.com
Twitter [@drcos.com](https://twitter.com/@drcos.com)
facebook <https://www.facebook.com/drcoscom>

Bonding line De

Bonding line Df

allowance 1/2in.

Hoodie3
acing one sheets
e interlining one sheets

DRCOS
SITE <http://dr-cos.info/en> | <http://dr-cos.com/fp>
MAIL info@dr-cos.com
Twitter [@drcos.com](https://twitter.com/@drcos.com)
facebook <https://www.facebook.com/drcoscom>

Bonding line FD