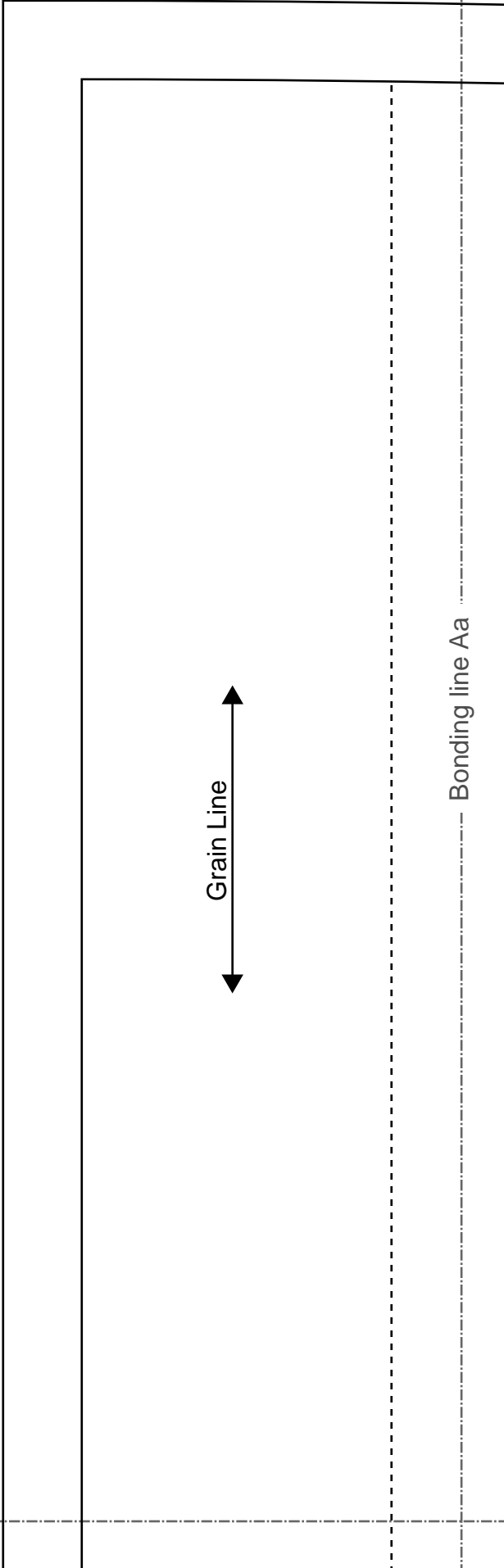
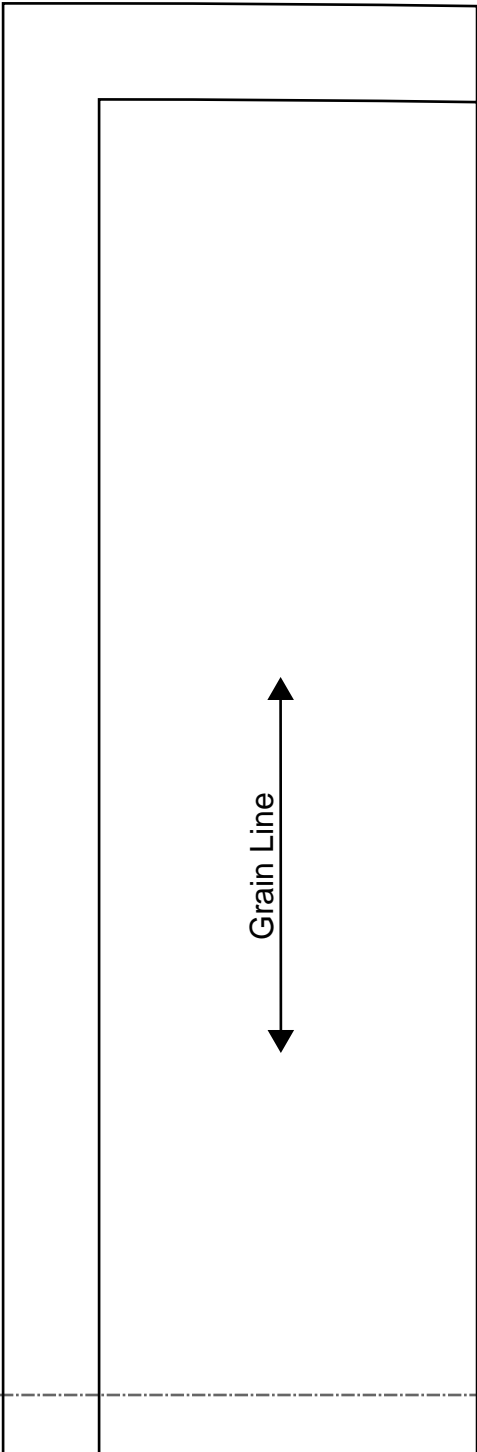


[Home](#)  
[Back to Hoodie2 page](#)



Bonding line AA

Bonding line Aa

Bonding line AA

**Hoodie2**  
**Facing two sheets**  
**Fusible interlining two sheets**

Seam allowance 1/2in.

Bonding line Ba

Bonding line AB

Bonding line AB

**MEN'S**  
size

**DRCOS**  
SITE: [www.drcos.com](http://www.drcos.com)  
T: [info@drcos.com](mailto:info@drcos.com) | [www.drcos.com](http://www.drcos.com)  
F: [info@drcos.com](mailto:info@drcos.com) | [www.drcos.com](http://www.drcos.com)  
Facebook: <https://www.facebook.com/drcos.com>

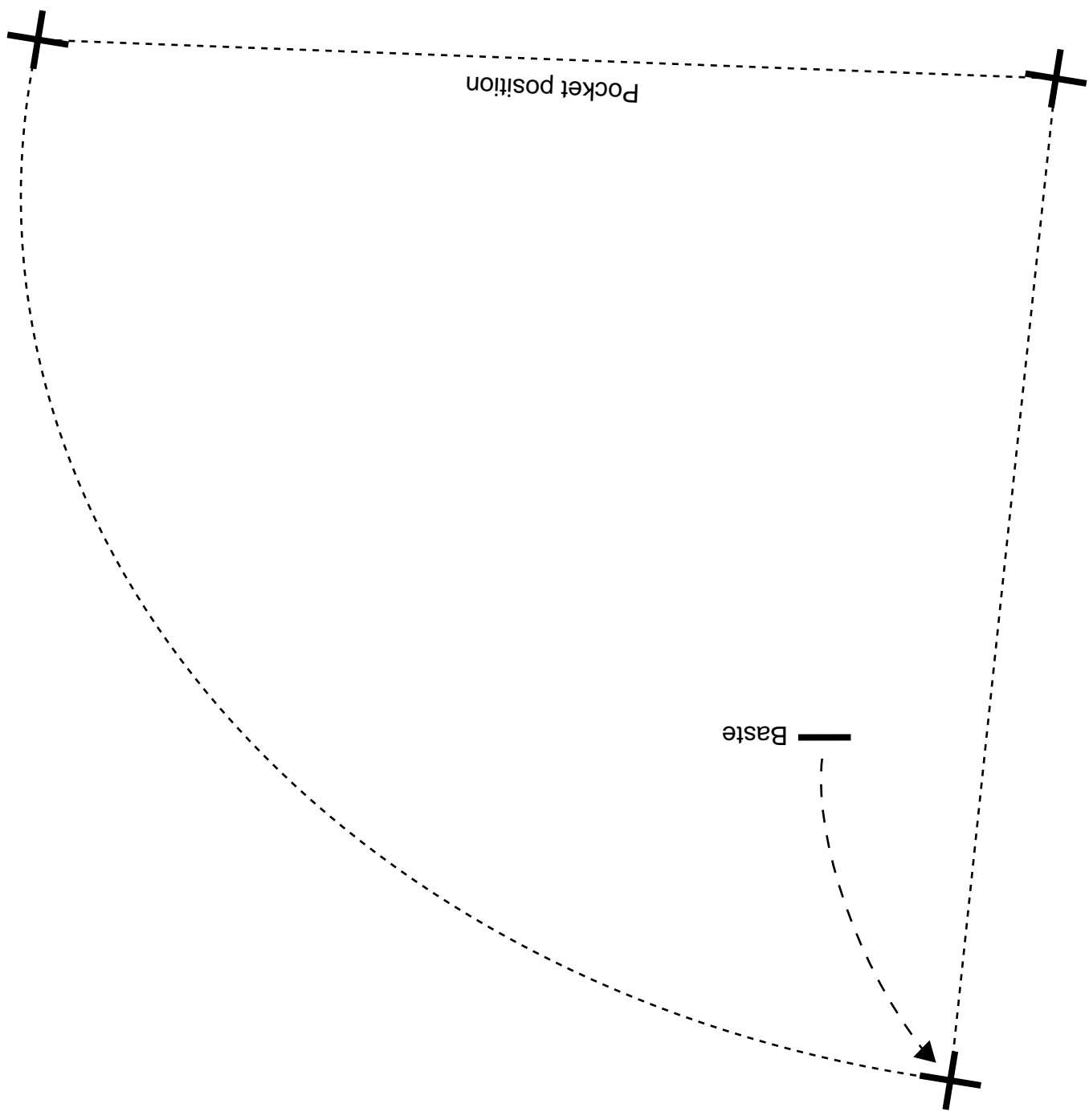
Bonding line Ca

Bonding line AC

Bonding line Aa

Bonding line Ab

Bonding line BA



Bonding line BA

Bonding line Ba

Bonding line Bb

Hoodie2  
Front Body  
two sheets



Bonding line BB

Bonding line BB

Bonding line Ca

Bonding line Cb

Facing Line

**DRCOS**  
 SITE [http://dr-cos.info\(en\)](http://dr-cos.info/en) [http://dr-cos.com\(pt\)](http://dr-cos.com/pt)  
 MAIL [info@dr-cos.com](mailto:info@dr-cos.com)  
 Twitter [https://twitter.com/dr-cos\\_com](https://twitter.com/dr-cos_com)  
 Facebook <https://www.facebook.com/drcoscom>

Seam allowance 1/2in.

Bonding line BC

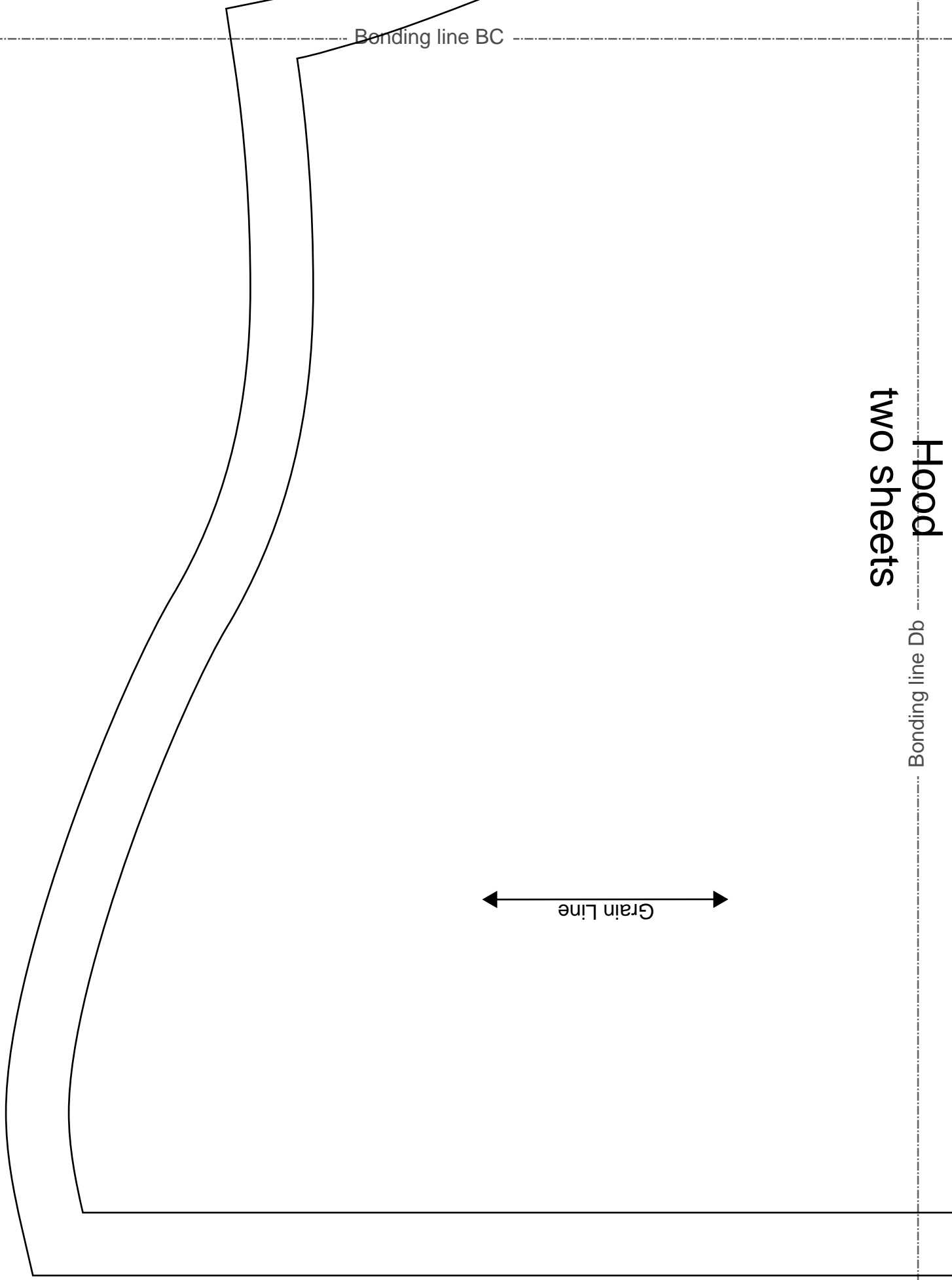
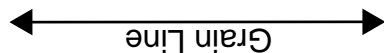
# Hood two sheets

Bonding line Da

Bonding line BC

Bonding line Db

Bonding line BD



Bonding line Ab

ce 1/2in.

Bonding line CA

Bonding line Ac



Bonding line Bb

Seam allowance 1/2in

Bonding line CA

Bonding line Bc

Back

Bonding line CB



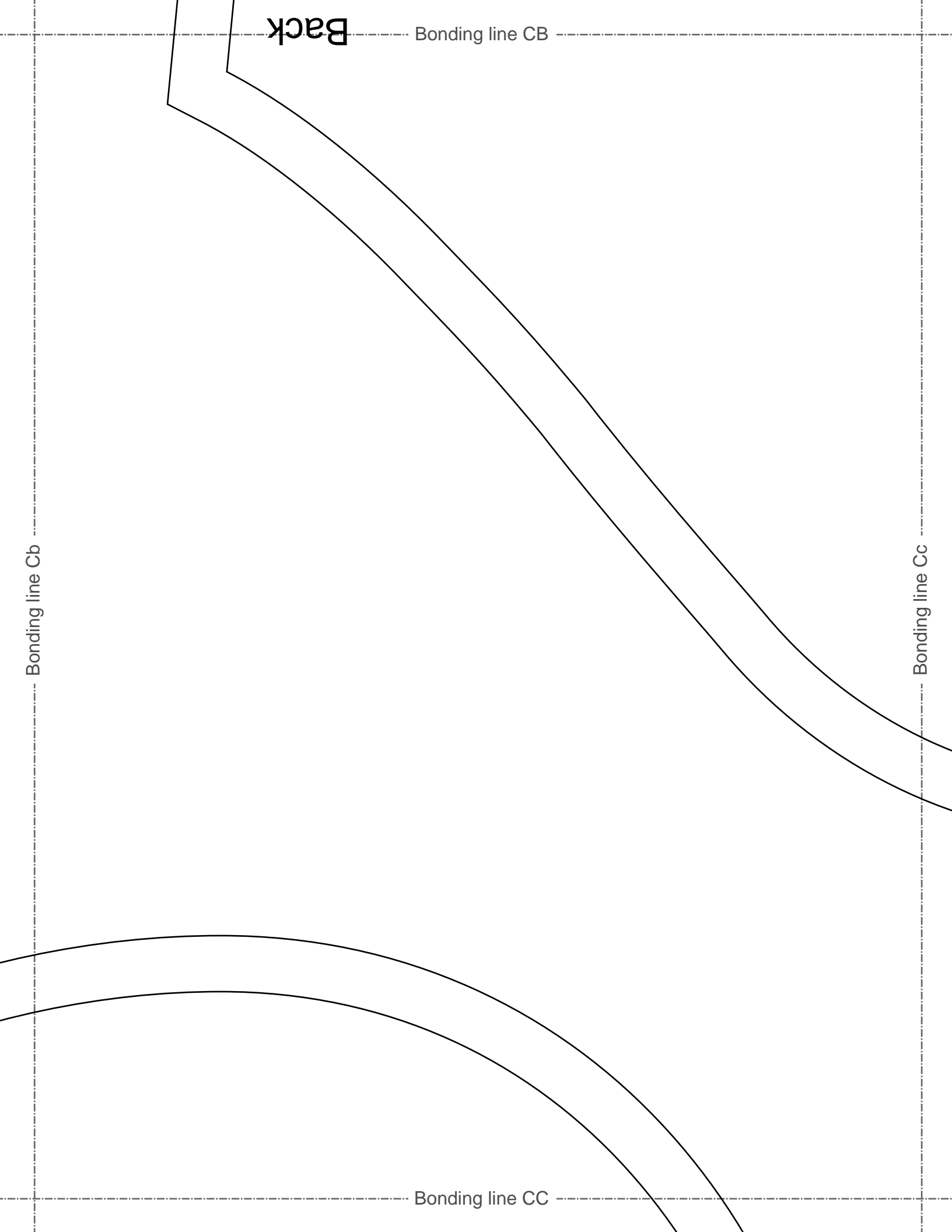
Back

Bonding line CB

Bonding line Cb

Bonding line Cc

Bonding line CC



Bonding line CC

two shafts

Bonding line Db

Hoodie2  
Hood

**MEN'S**  
 size

**DRCOS**  
SITE <http://dr-cos.info/en/> <http://dr-cos.com/fp>  
MAIL [info@dr-cos.com](mailto:info@dr-cos.com)  
Twitter [@drcos.com](https://twitter.com/@drcos.com)  
facebook <https://www.facebook.com/drcoscom>

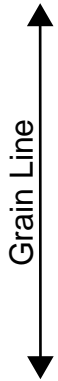
Bonding line Dc

Bonding line CD

Seam allowance 1/2in.

Bonding line Ac

Bonding line Ad



Bonding line DA

Bonding line DA

Bonding line Bc

Bonding line Bd

Hoodie2  
Sleeve  
two sheets



Bonding line DB

Bonding line DB

Bonding line Cc

**DRCOS**  
 SITE <http://dr-cos.info/en> <http://dr-cos.com/jp>  
 MAIL [info@dr-cos.com](mailto:info@dr-cos.com)  
 Twitter [https://twitter.com/dr-cos\\_com](https://twitter.com/dr-cos_com)  
 facebook <https://www.facebook.com/drcoscom>

Bonding line Cd

odiez  
 ne sheets  
 ing one sheets

**DRCOS**  
 SITE <http://dr-cos.info/en> <http://dr-cos.com/jp>  
 MAIL [info@dr-cos.com](mailto:info@dr-cos.com)  
 Twitter [https://twitter.com/dr-cos\\_com](https://twitter.com/dr-cos_com)  
 facebook <https://www.facebook.com/drcoscom>

Bonding line DC

Bonding line DC

Bonding line Dc

Bonding line Dd

Grain Line

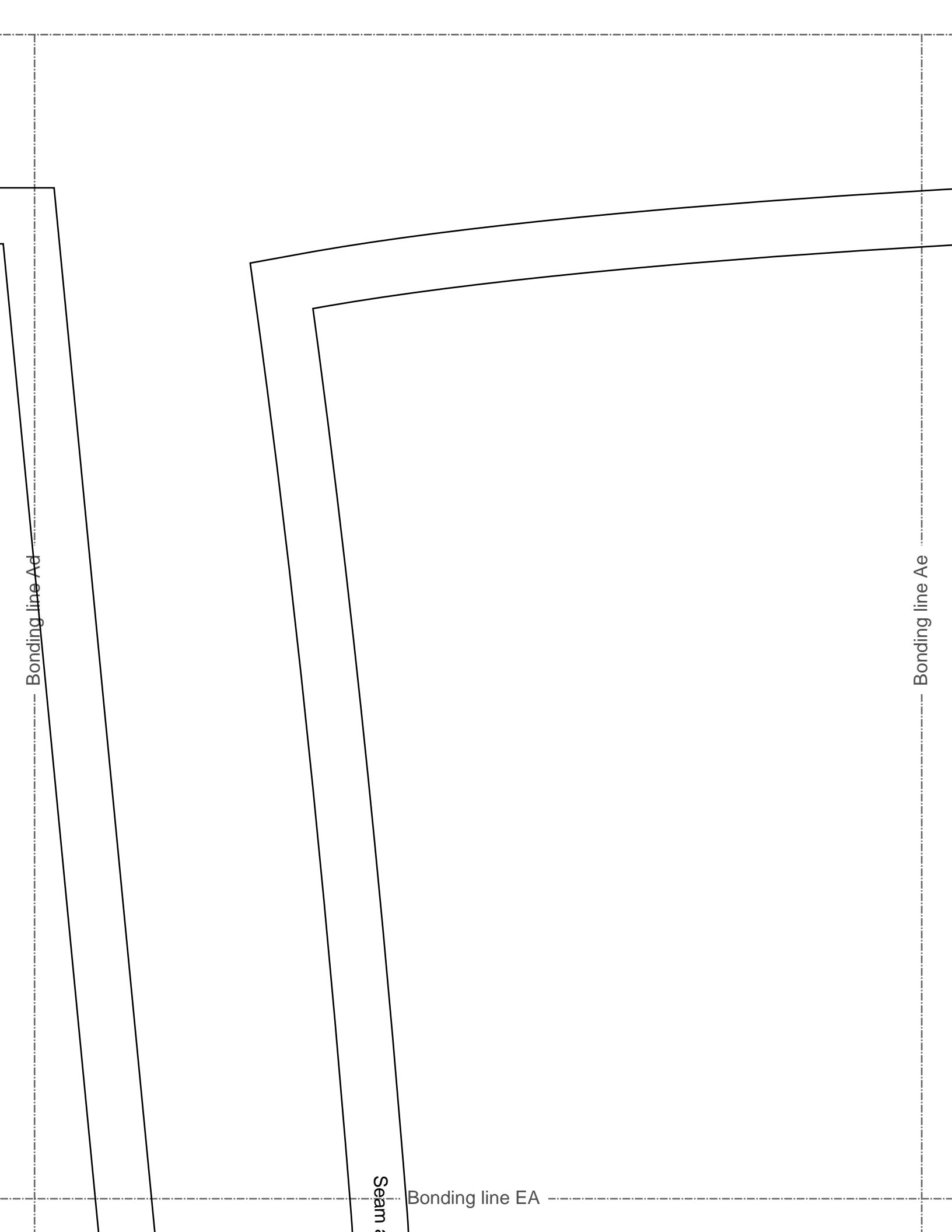
**MEN'S**  **L**  
size

Hoodie2  
Pocket  
two sheets



Seam allowance 1/2in.

Bonding line DD



Bonding line Ad

Seam

Bonding line EA

Bonding line Ae



Bonding line Bd

Bonding line EA

Seam allowance 1/2in.

Bonding line EB

Front



Size  
Type  
2

Front

Bonding line EB

Bonding line Cd

Bonding line Ce

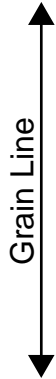
Hoodie  
Facing one s  
Fusible interlining

**MEN'S**  
**7**  
size

Seam allowance 1/2in.

Bonding line EC

Bonding line Ae



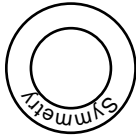
Bonding line FA

Bonding line Af

**DRCOS**  
SITE <http://drcos.info/en> <http://drcos.com/jp>  
MAIL [info@drcos.com](mailto:info@drcos.com)  
Twitter [https://twitter.com/drcos\\_com](https://twitter.com/drcos_com)  
facebook <https://www.facebook.com/drcoscom>

Bonding line FA

Hoodie2  
Back Body  
one sheets



size  
MEN'S  
be



Bonding line Bf

Bonding line FB

Bonding line FB

Bonding line Ce

Bonding line Cf

Facing Line

Bonding line FC

