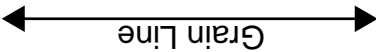


[Home](#)
[Back to Hoodie2 page](#)



Bonding line Aa

Seam allowa

Bonding line AA

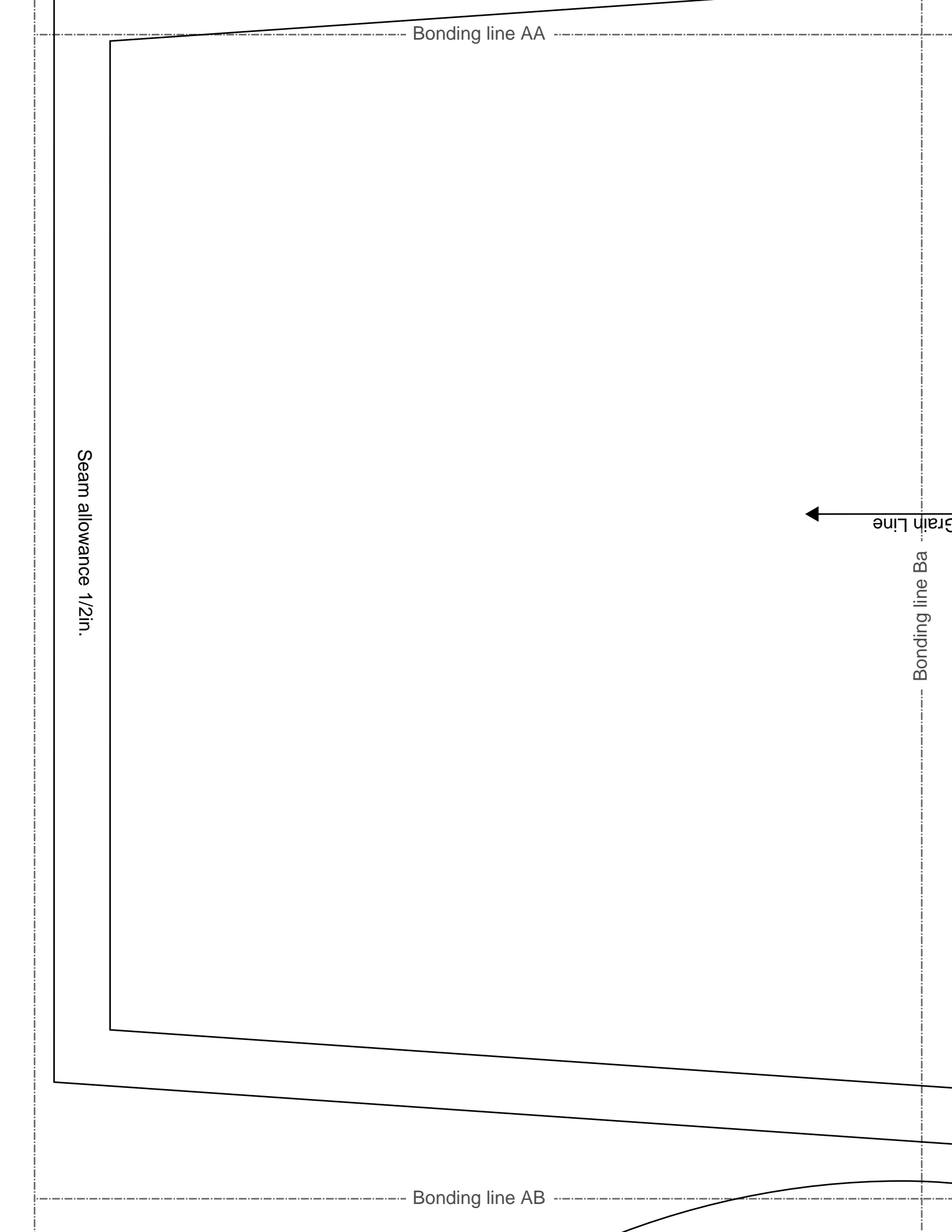
Bonding line AA

Seam allowance 1/2in.

Grain Line

Bonding line Ba

Bonding line AB





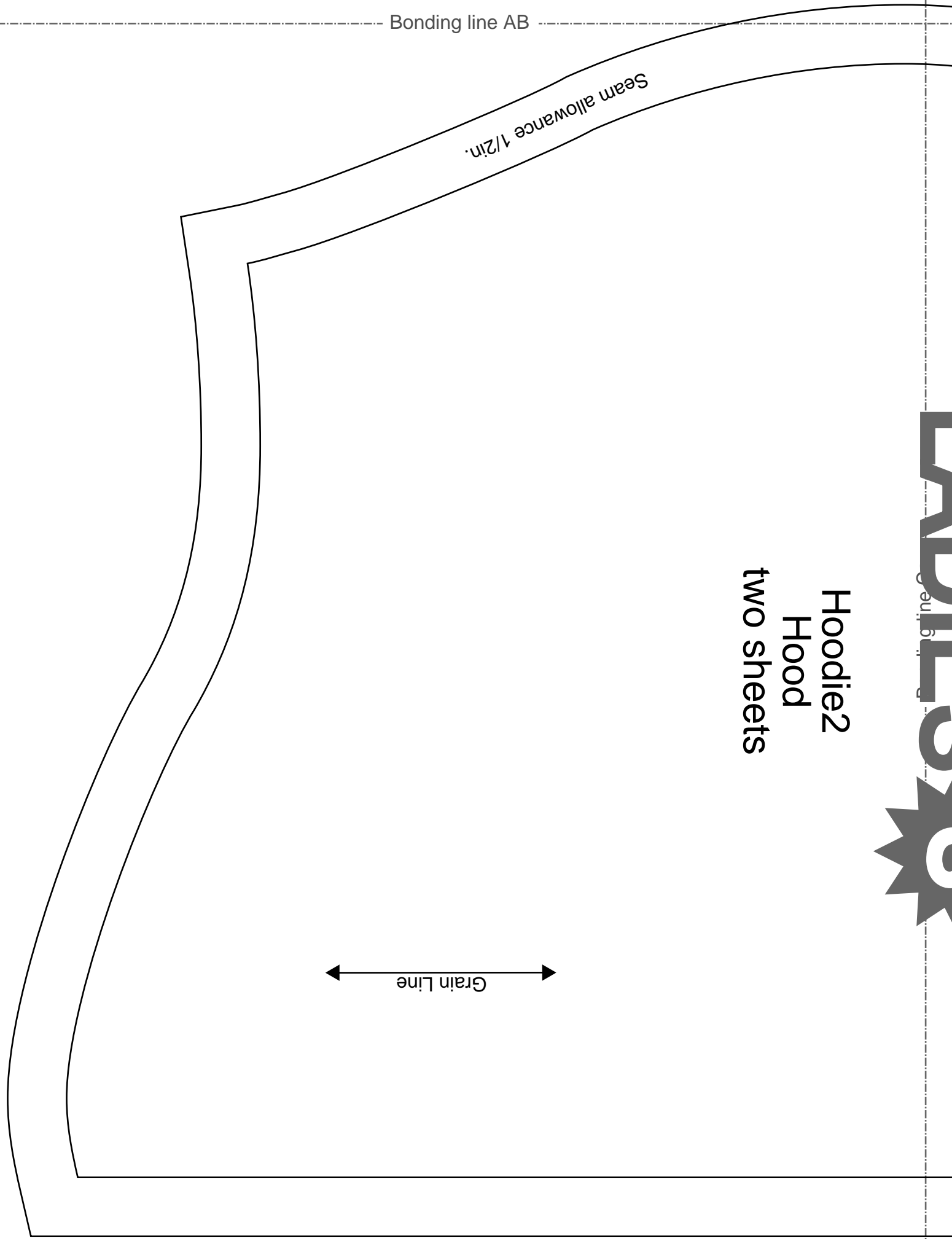
Hoodie2
Hood
two sheets

Bonding line AB

Seam allowance 1/2in.

Grain Line

Bonding line AC





LADIES'S size S



Hoodie2
Back Body
one sheets

Bonding line Aa

Bonding line Ab

allowance 1/2in.

Bonding line BA

Bonding line BA

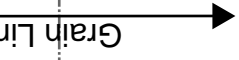
LADIES'S
size
S

Hoodie2
Sleeve
two sheets

Bonding line Bb

Bonding line BB

Bonding line Ba



Bonding line BB

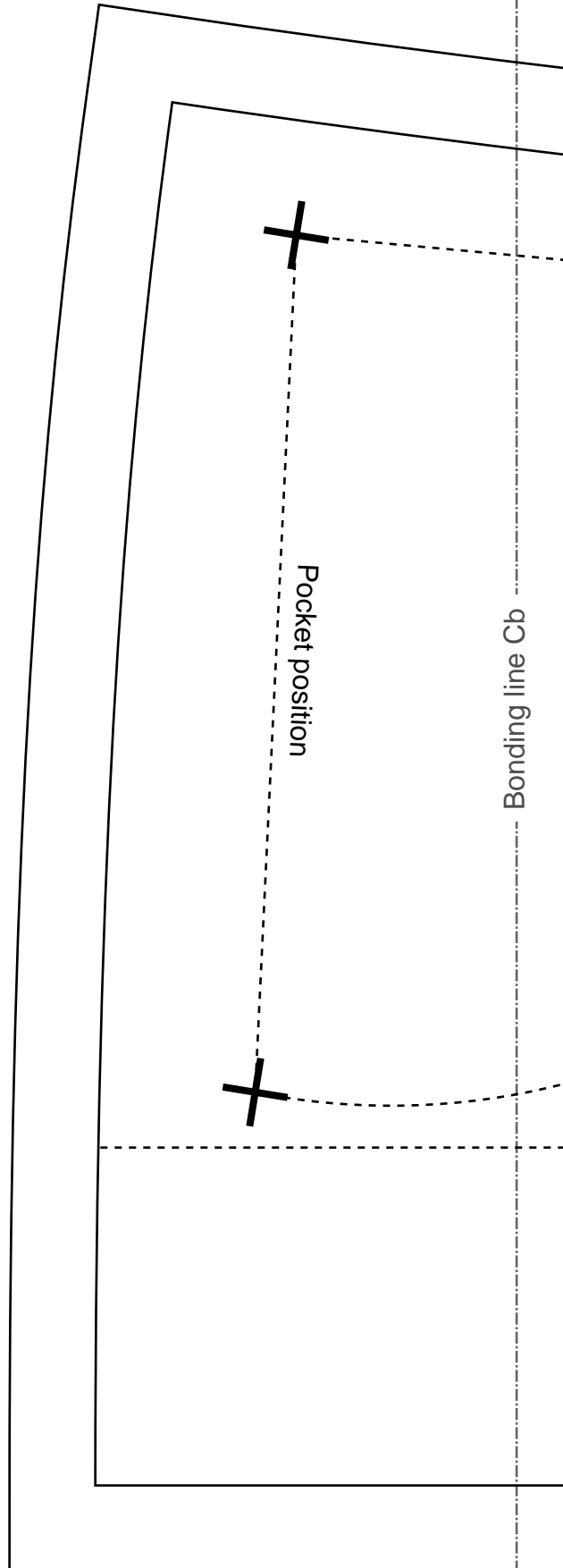
LADIES'S

size



STITE <http://dr-cos.info/en/> <http://dr-cos.com/jp/>
MAIL info@dr-cos.com
Twitter [@drcos_com](https://twitter.com/@drcos_com)
facebook <https://www.facebook.com/drcos.com/>

Bonding line BC



Pocket position

Bonding line Cb

Bonding line Ab

Facing Line

Seam allowance 1/2in.

Ac
size
Bor

Front

Bonding line CA

DRC
SITE <http://dr-cos.info/en>
MAIL info@dr-cos.com
Twitter <https://twitter.com/>
facebook <https://www.facebook.com/>

Bonding line CA

Bonding line Bb

Bonding line Bc

Back

Bonding line CB

Front of Body
two sheets

Seam allowance 1/2in.

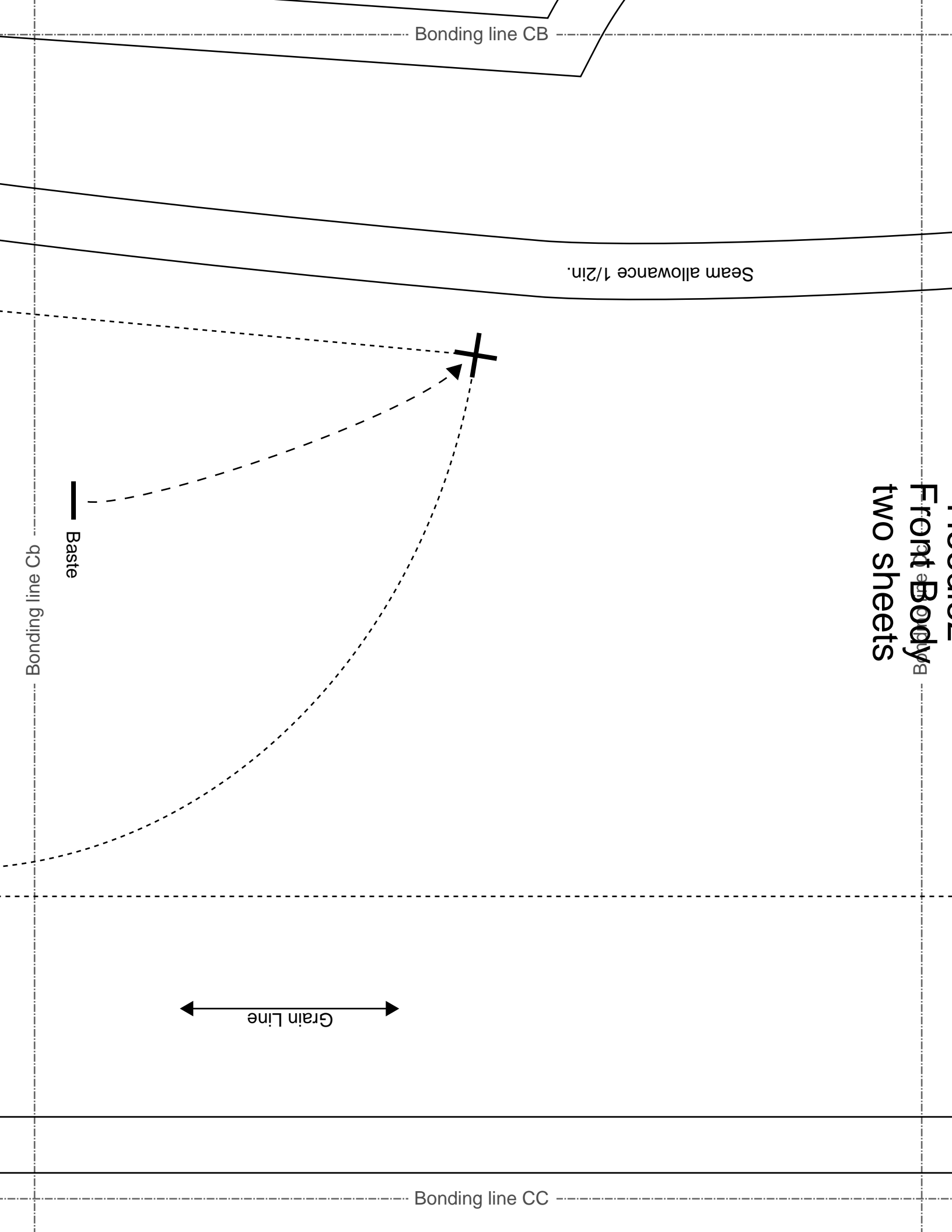
Bonding line CB

Bonding line CC

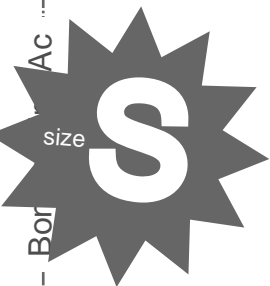
Bonding line Cb

Baste

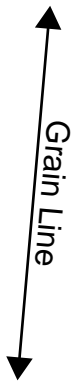
Grain Line



DRCOS
SITE <http://dr-cos.info/en> <http://dr-cos.com/jp/>
MAIL info@dr-cos.com
Twitter [@drcos_com](https://twitter.com/drcos_com)
facebook <https://www.facebook.com/drcoscom>



Hoodie2
Pocket
two sheets



DRCOS
<http://dr-cos.info/en> <http://dr-cos.com/jp/>
info@dr-cos.com
[@drcos_com](https://twitter.com/drcos_com)
<https://www.facebook.com/drcoscom>

LADIES'S
size

Bonding line DA

Bonding line Ad

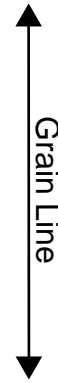
Bonding line Bc

Bonding line DA

Bonding line DB

www.soccos.com
info@drccs.com
<https://twitter.com/drccs>
<https://www.facebook.com/drccs>
 DRCCS
 (f) <http://drccs.com> (fp)
 (u) <http://drccs.com>
 (e) info@drccs.com
 (s) <http://drccs.com>

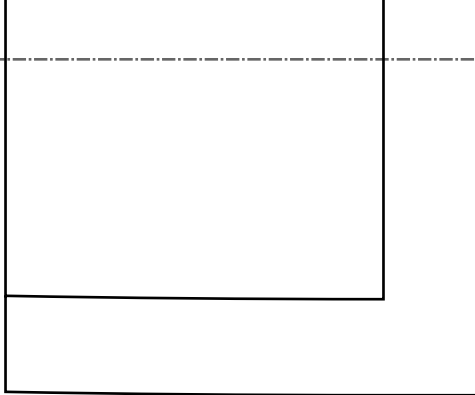
Hoodie2
Facing two sheets
Fusible interlining two sheets



Seam allowance 1/2in.

Bonding line Bd

Bonding line DB



Bonding line Cd

LADIES'S
size
S

Hoodie2

Front Body

two shorts

Bonding line DC

Bonding line EB

Bonding line Cd

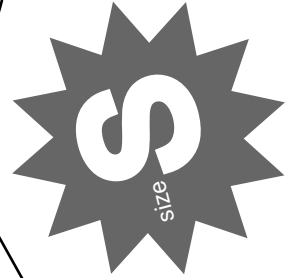
Facing Line

DRCOS
 (p)cnf/rd/dr-ccs/http://
 MAIL: info@drcos.com
 T: @drcos /twitter/https://
 facebook https://www.facebook.com/drcoscom

DRCOS
 (p)cnf/rd/dr-ccs/http://
 MAIL: info@drcos.com
 T: @drcos /twitter/https://
 facebook https://www.facebook.com/drcoscom

Seam allowance 1/2in.

Hoodie2
 sheets
 Facing one sheet
 Fusible interlining one sheet



Bonding line EC

Bonding line Ce