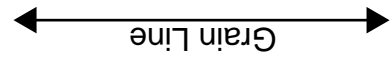


[Home](#)
[Back to Hoodie2 page](#)



Bonding line Aa

Sea

Bonding line AA

Bonding line AA

Seam allowance 1/2in.

Bonding line AB

Bonding line Ba



ne

Bonding line AB

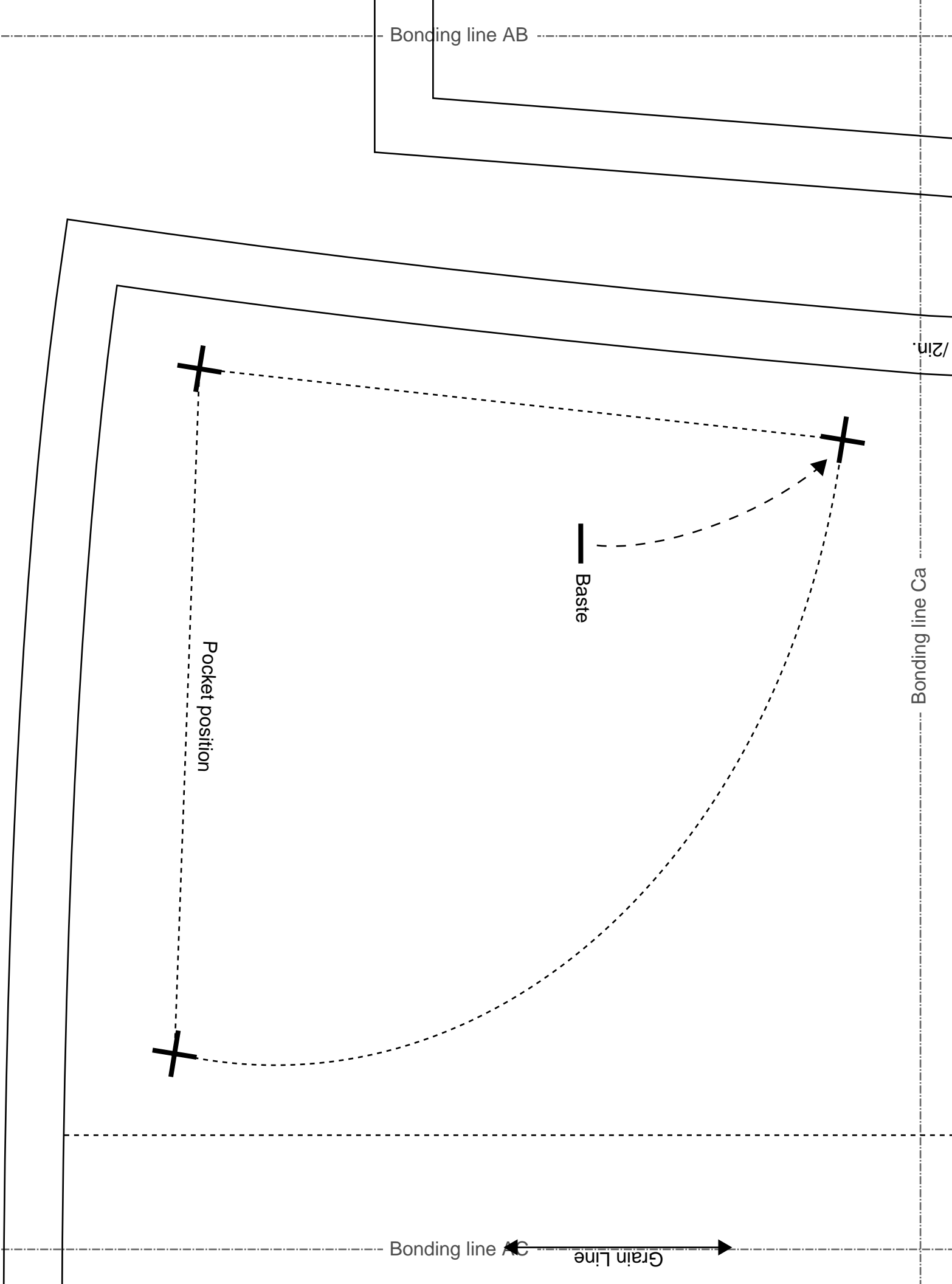
1/2 in.

Bonding line Ca

Baste

Pocket position

Bonding line AC Grain Line



Bonding line ← Grain Line →



Hoodie2 Pocket two sheets

Seam allowance 1/2in.

Grain Line

DRCOS

SITE [http://dr-cos.info\(en\)](http://dr-cos.info(en)) [http://dr-cos.com\(jp\)](http://dr-cos.com(jp))
MAIL info@dr-cos.com
Twitter [@drcos_com](https://twitter.com/@drcos_com)
facebook <https://www.facebook.com/drcoscom>

Bonding line Da


Bonding line AD

Bonding line Aa

Bonding line Ab



LADIES'S ^{size} M


Hoodie2
Back Body
one sheets

Seam allowance 1/2in.

Bonding line BA

Bonding line BA

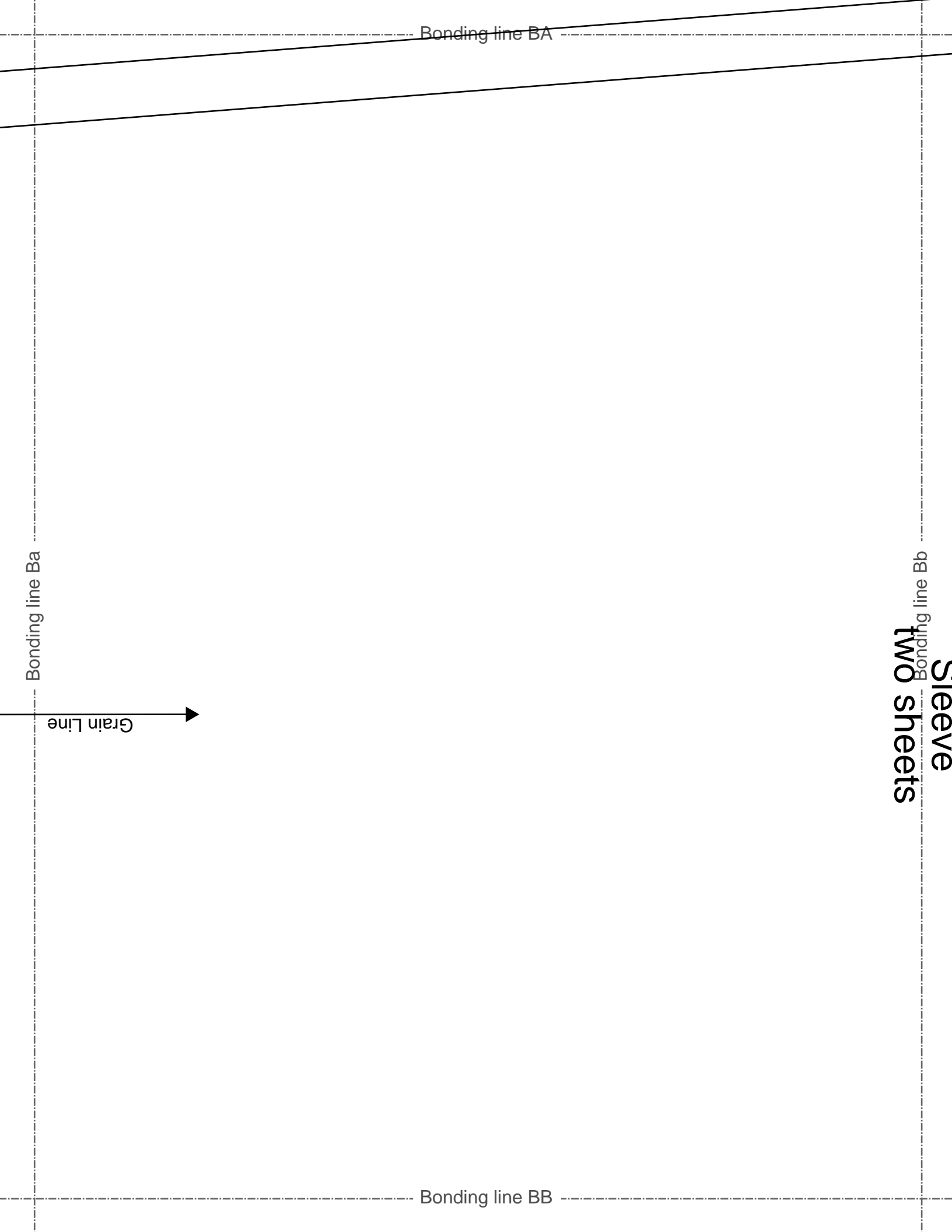
Bonding line Ba

Grain Line

Bonding line Bb

Sleeve
two sheets

Bonding line BB



Bonding line BB

Seam allowance 1/2in.

Bonding line Ca

Bonding line Cb

Hoodie2
Front Body
two sheets

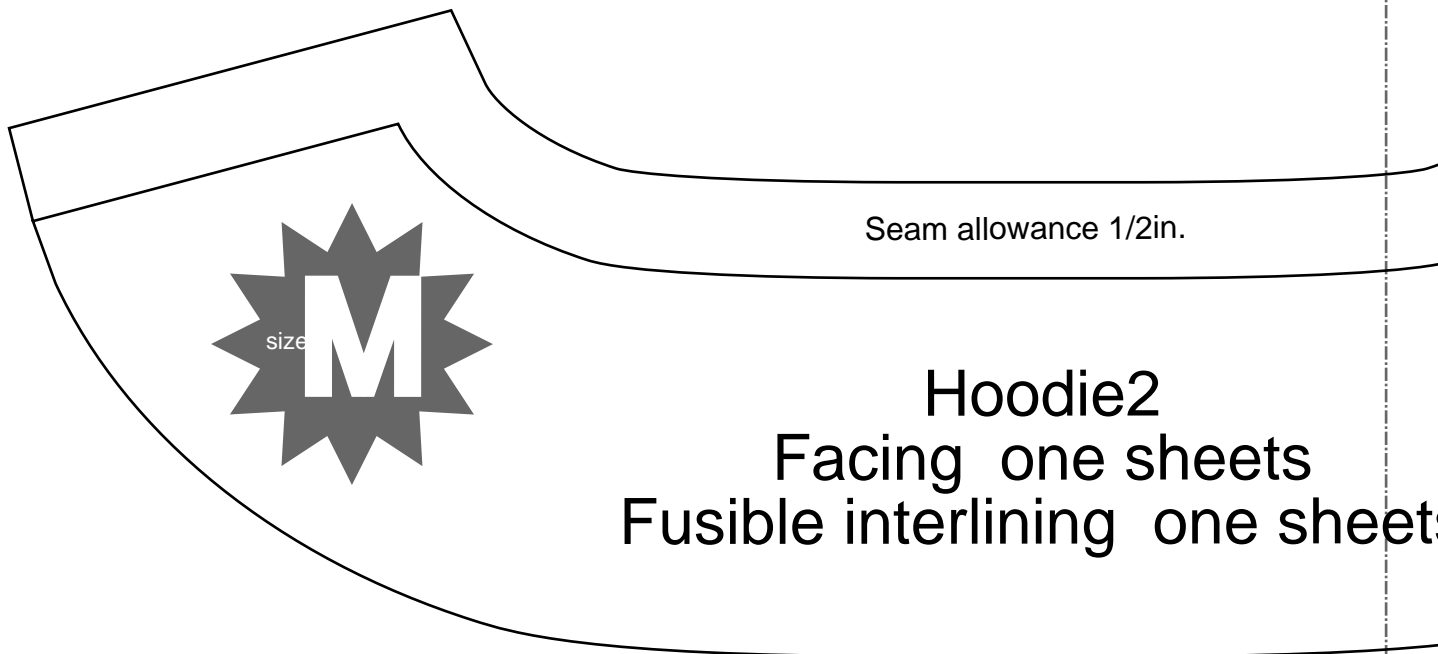


Bonding line BC

Bonding line BC

Bonding line Da

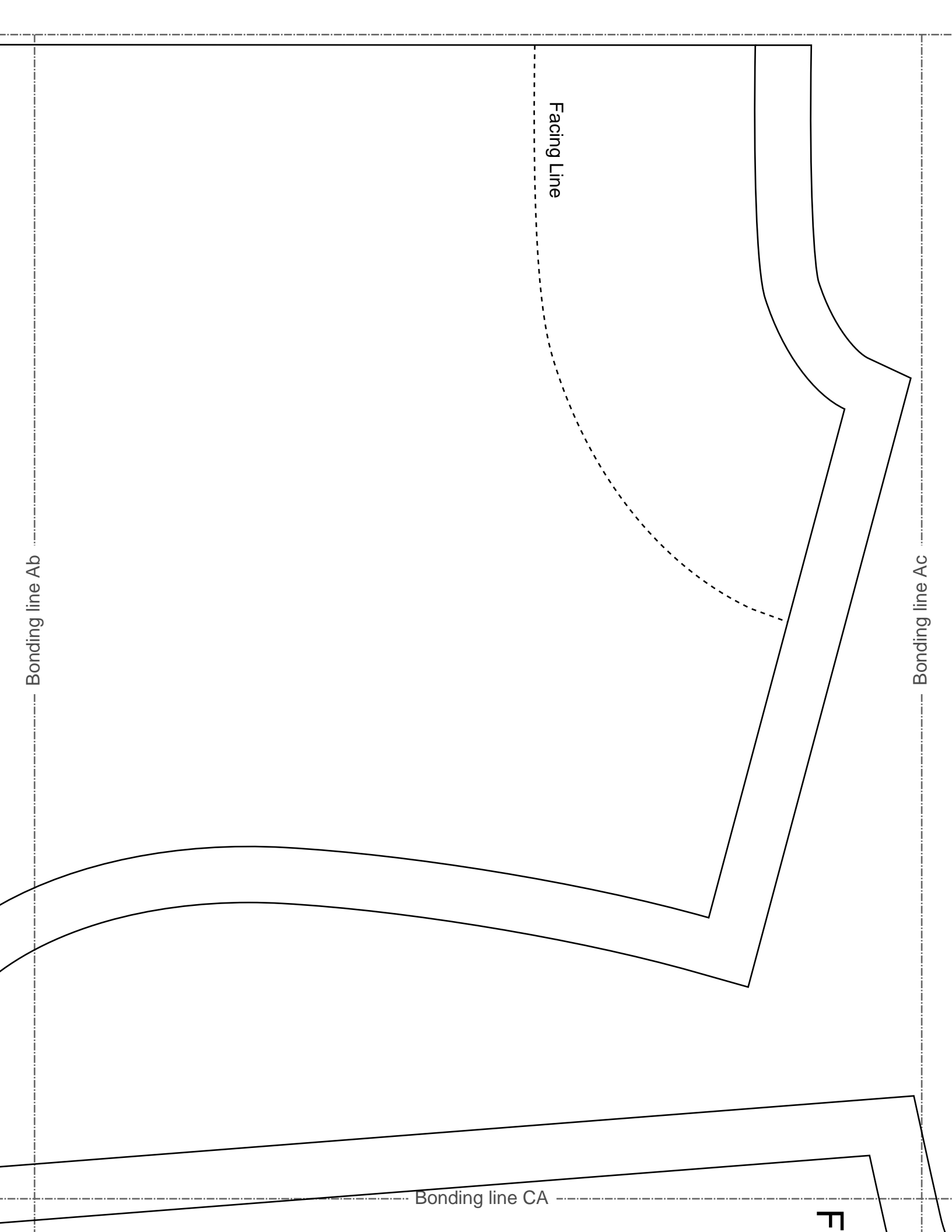
Bonding line Db



Seam allowance 1/2in.

Hoodie2
Facing one sheets
Fusible interlining one sheet

Bonding line BD



Bonding line Ab

Facing Line

Bonding line Ac

Bonding line CA

F

Front

Bonding line CA

Bonding line Bc

Bonding line CB

LADIES'S  M

Hoodie2

Sleeve

Bonding line Bb
two sheets

Bonding line CB

Back

Bonding line Cb

Bonding line Cc

DRCOS
 SITE: <http://dr-cos.info/en/> | <http://dr-cos.com/fp/>
 MAIL: info@dr-cos.com
 Twitter: <https://twitter.com/dr-cos> | <https://www.facebook.com/drcos.com>
 Facebook: <https://www.facebook.com/drcos.com>

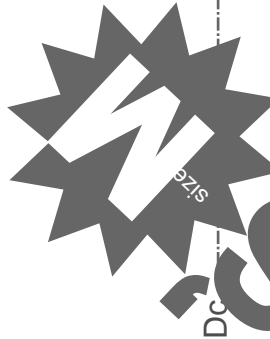
Facing Line

Bonding line CC

Bonding line CC

Bonding line Db

Bonding line Dc



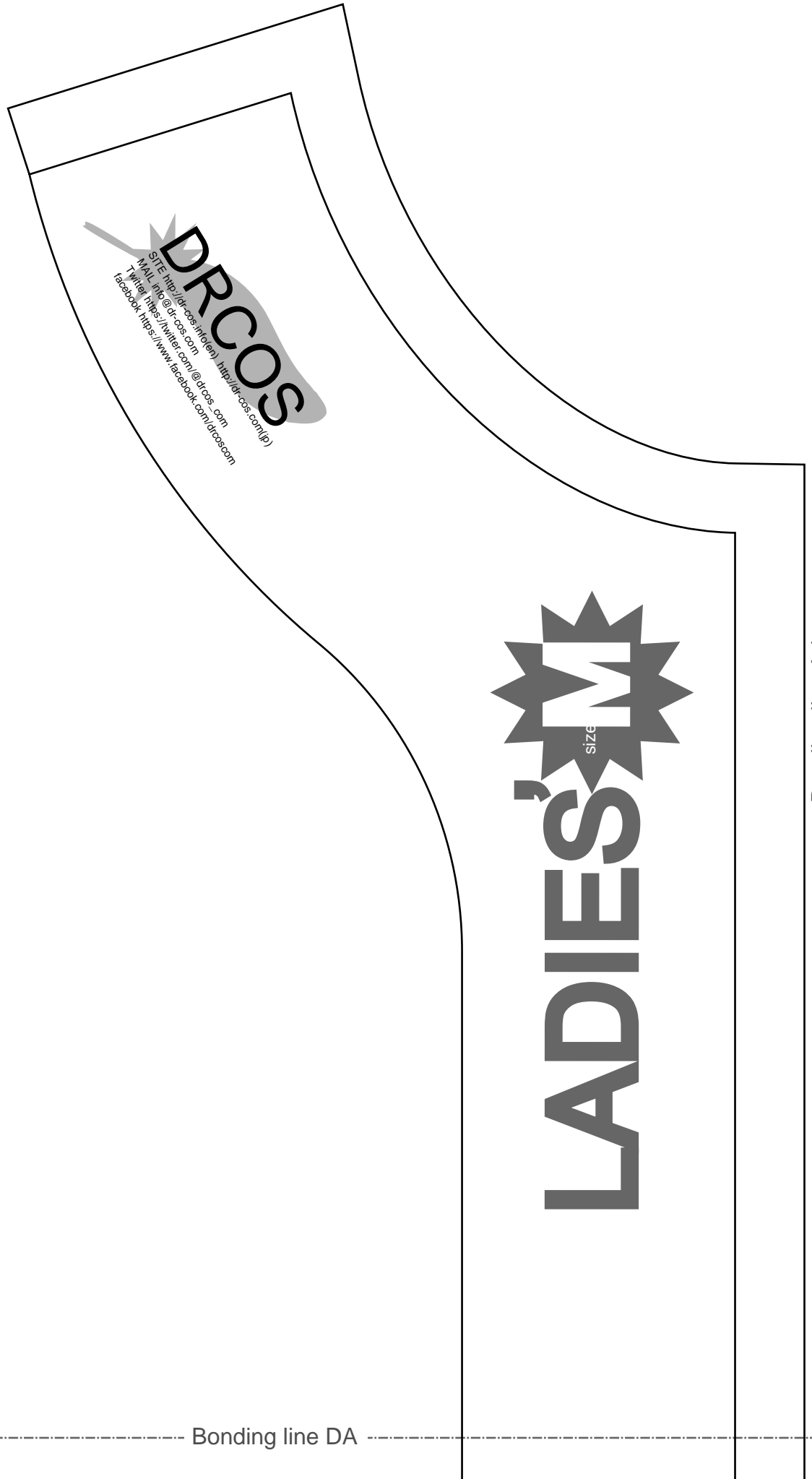
DRCOS
SITE: <http://drcos.info/en> | <http://drcos.com/jp>
MAIL: info@drcos.com | info@dr-cos.com
Twitter: <https://twitter.com/drcos> | <https://twitter.com/dr-cos>
facebook: <https://www.facebook.com/drcoscom> | <https://www.facebook.com/dr-cos-com>

DRCOS
SITE: <http://drcos.info/en> | <http://drcos.com/jp>
MAIL: info@drcos.com | info@dr-cos.com
Twitter: <https://twitter.com/drcos> | <https://twitter.com/dr-cos>
facebook: <https://www.facebook.com/drcoscom> | <https://www.facebook.com/dr-cos-com>

heets

Bonding line CD

Bonding line Ac



DRCOS
SITE: <http://drcos.info/en> | <http://drcos.com>
MAIL: info@drcos.com
Twitter: <https://twitter.com/drcos>
Facebook: <https://www.facebook.com/drcos.com>

LADIES'S  **M**
size

Bonding line DA

Bonding line Ad

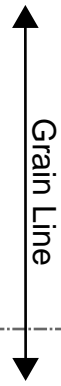
Bonding line Bc

Bonding line DA



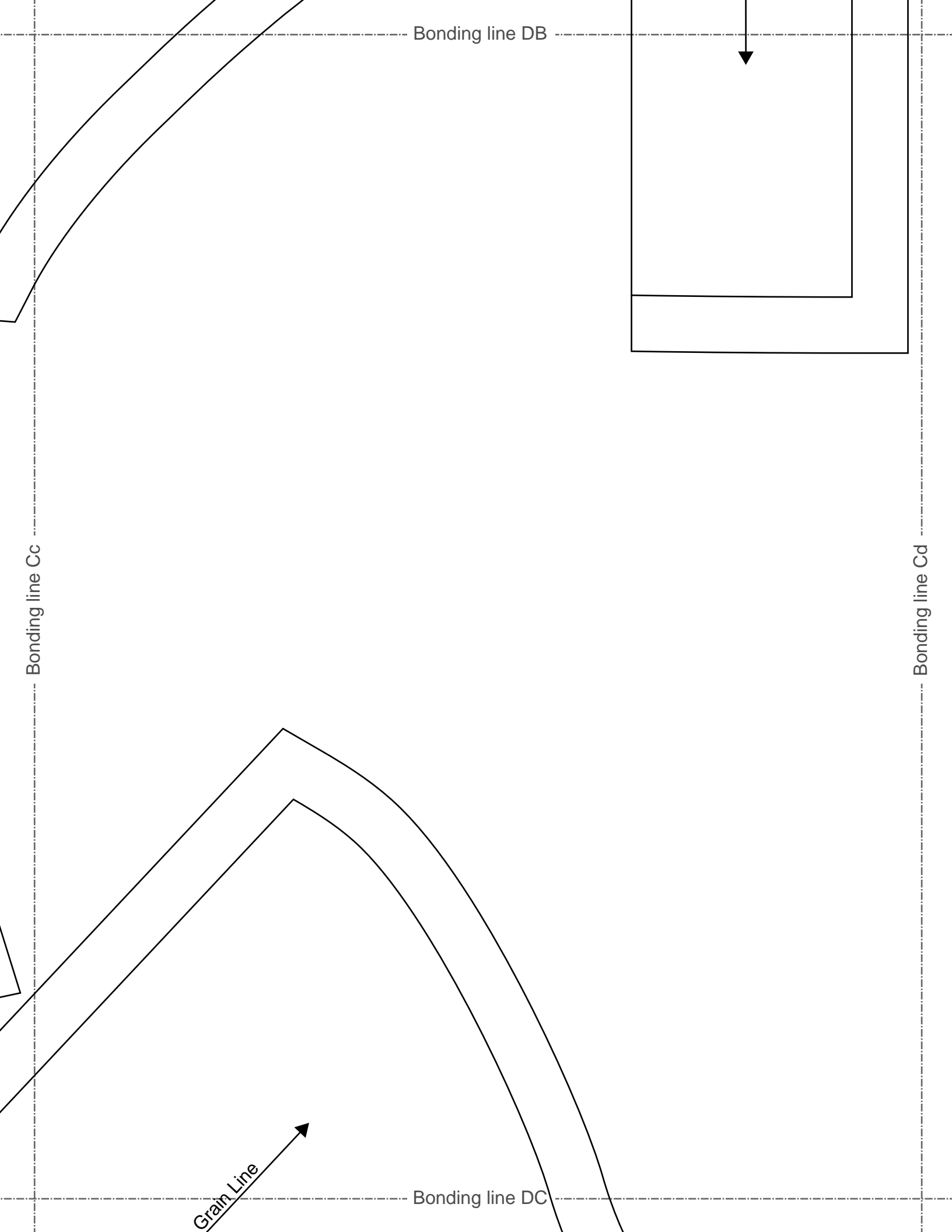
Bonding line DB

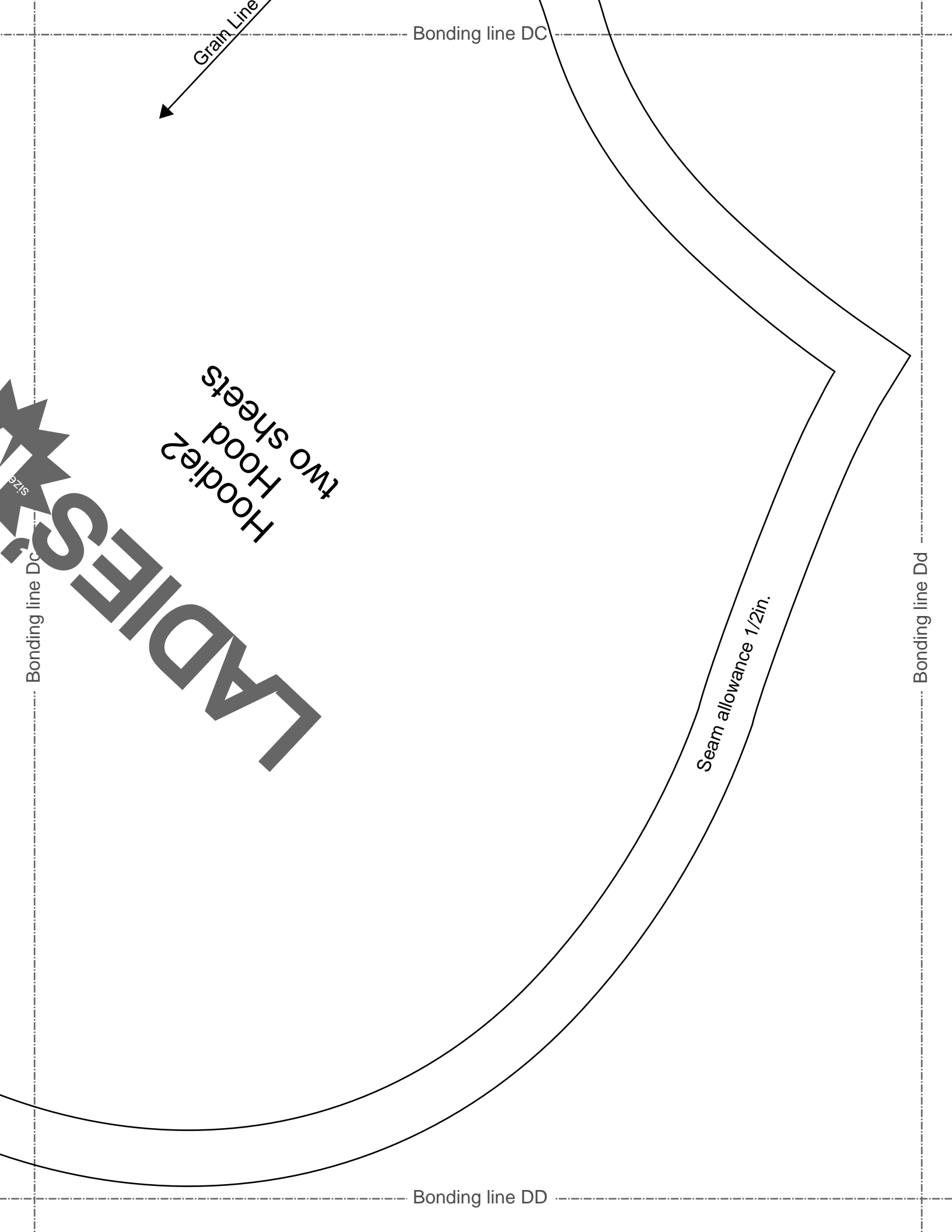
Hoodie2
Facing two sheets
Fusible interlining two sheets



Seam allowance 1/2in.

Bonding line Bd





Grain Line

Bonding line DC

Bonding line Dc

Hoodie2
Hood
two sheets

LADIES

Seam allowance 1/2in.

Bonding line DD

Bonding line Dd