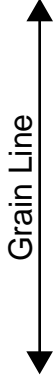


[Home](#)

[Back to Hoodie2 page](#)



Pocket position

Bonding line Aa

Bonding line AA

Bonding line AA

Hoodie2
Front Body
two sheets



Bonding line Ba

Bonding line AB

Bonding line AB

Facing Line

facebook <https://www.facebook.com/drcos.com>
Twitter <https://twitter.com/drcos.com>
MAIL info@drcos.com
SITE [http://drcos.info\(en\)](http://drcos.info(en)) [http://drcos.com\(fp\)](http://drcos.com(fp))

DRCOS

Bonding line Ca

Bonding line AC

LABOR

Bonding line AC

LADIES'

Hoodie2
Hood
two sheets

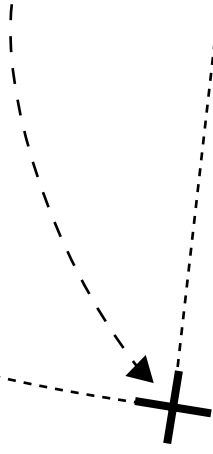
Seam allowance 1/2in.

Bonding line Da

Bonding line AD

Bonding line Aa

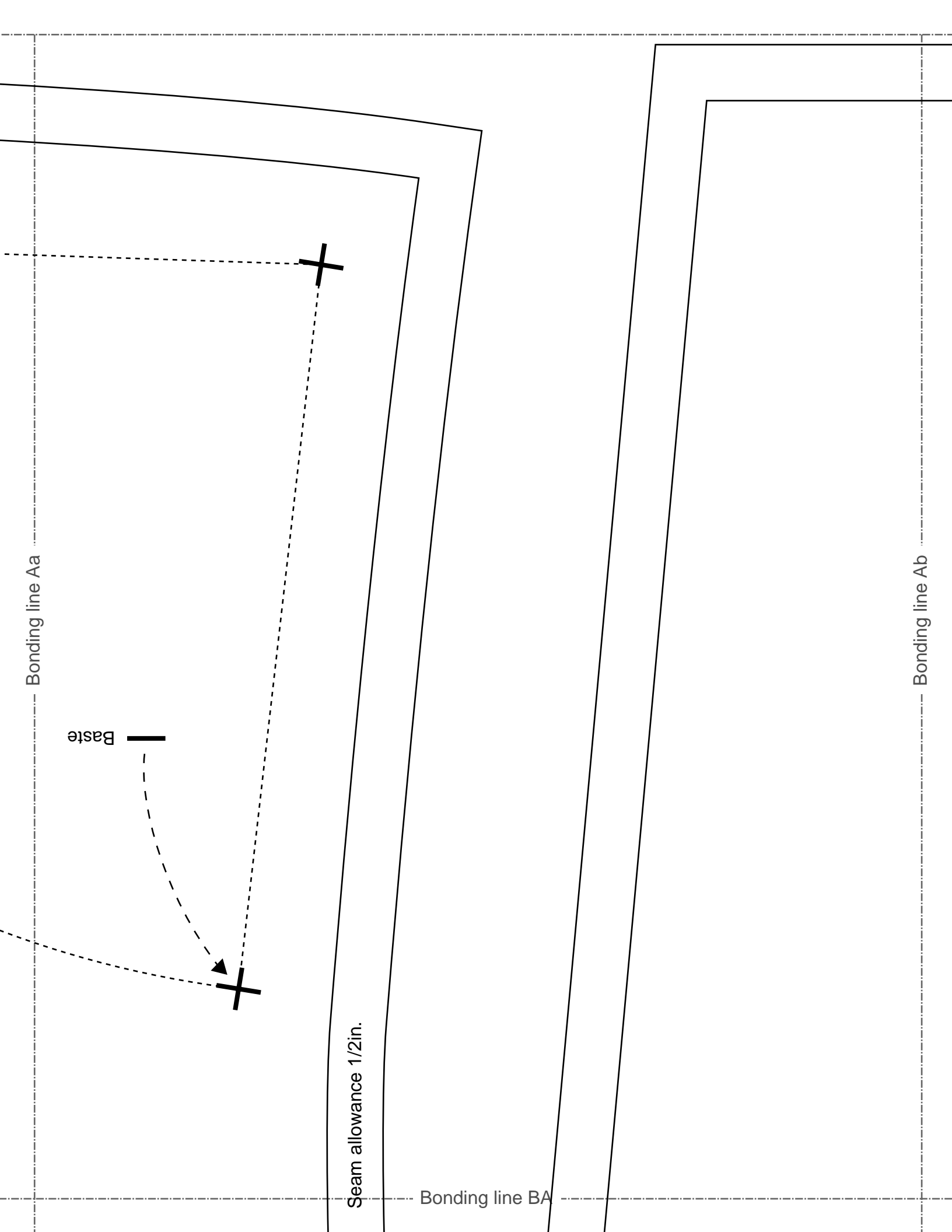
Baste



Seam allowance 1/2in.

Bonding line BA

Bonding line Ab



LA

Bonding line Ba

Seam

Bonding line BA

Back

Bonding line BB

Bonding line Bb

Bonding line BB

facebook
Twitter ht
MAIL info
SITE http
D

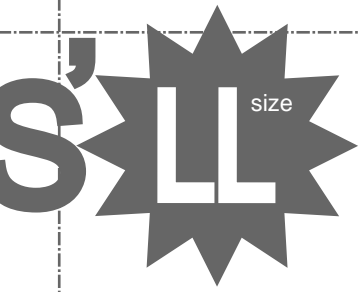
Bonding line Ca

Bonding line Cb

DRCOS

SITE [http://dr-cos.info\(en\)](http://dr-cos.info(en)) [http://dr-cos.com\(jp\)](http://dr-cos.com(jp))
MAIL info@dr-cos.com
Twitter https://twitter.com/@drcos_com
facebook <https://www.facebook.com/drcoscom>

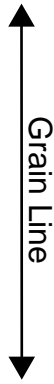
Bonding line BC



Bonding line BC

2
ts

Bonding line Da



Bonding line Db

Bonding line BD

Seam allowance 1/2in.

Bonding line Ab

Bonding line Ac



Bonding line CA

Hoodie2
Sleeve
two sheets



Bonding line CB

Bonding line Cb

[SITE http://dr-cos.info/en](http://dr-cos.info/en) <http://dr-cos.com/jp>
 MAIL info@dr-cos.com
 Twitter https://twitter.com/drcos_com
 facebook <https://www.facebook.com/drcoscom>

DRCOS

[SITE http://dr-cos.info/en](http://dr-cos.info/en) <http://dr-cos.com/jp>
 MAIL info@dr-cos.com
 Twitter https://twitter.com/drcos_com
 facebook <https://www.facebook.com/drcoscom>

DRCOS

Bonding line Cc

↔ Grain Line

Hood
 Facing tw
 Fusible interlinin

Bonding line CC

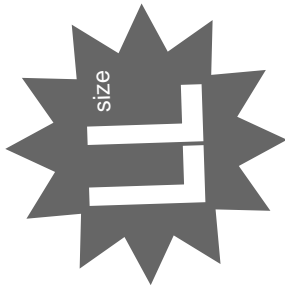
Bonding line CC

Bonding line Db

Bonding line Dc

Hoodie2 Pocket two sheets

Grain Line



Seam allowance 1/2in.

Bonding line CD

Bonding line Ac

Bonding line Ad

Seam allowance 1/2in.

Bonding line A

Bonding line Bc

Bonding line 1/2in. A

Bonding line Bd

size

Front

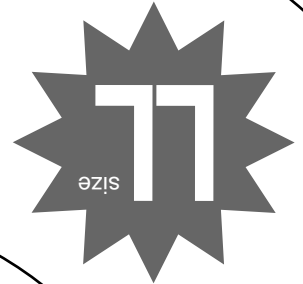
Bonding line DB



Bonding line DB

Hoodie2
Facing one sheets
Fusible interlining one sheets

Seam allowance 1/2in.



Bonding line Cc

Bonding line Cd

Hoodie2
Facing two sheets
Fusible interlining two sheets

LAD

Seam allowance 1/2in.

Bonding line DC

Bonding line Ad



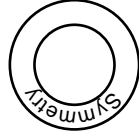
Bonding line EA

DRCOS
SITE [http://drcos.info\(en\)](http://drcos.info(en)) [http://drcos.com\(jp\)](http://drcos.com(jp))
MAIL info@drcos.com
Twitter https://twitter.com/drcos_com
facebook <https://www.facebook.com/drcoscom>

Bonding line Ae

Bonding line EA

Hoodie2
Back Body
one sheets



LADIES
Size

Bonding line Bd

Bonding line Be

Bonding line EB

Bonding line EB

Facing Line

Bonding line Cd

Bonding line Ce

[SITE http://dr-cos.info/](http://dr-cos.info/) <http://dr-cos.com/>
[MAIL info@dr-cos.com](mailto:info@dr-cos.com)
[Twitter https://twitter.com/dr-cos](https://twitter.com/dr-cos)
[facebook https://www.facebook.com/dr-cos.com/](https://www.facebook.com/dr-cos.com/)
[facebook https://www.facebook.com/drcoscom](https://www.facebook.com/drcoscom)

ADIES' L size


Bonding line EC