



DRCOS

SITE [http://dr-cos.info\(en\)](http://dr-cos.info(en)) [http://dr-cos.com\(jp\)](http://dr-cos.com(jp))
MAIL info@dr-cos.com
Twitter [@drcos_com](https://twitter.com/@drcos_com)
facebook <https://www.facebook.com/drcoscom>

Bonding line Aa

tape. Please refer to this page
s.info/kt-biastape.html



tape. Please refer to this page
s.info/kt-biastape3.html

Bonding line AA

Bonding line AA

Facing Line

Bonding line Ba

How to make bias tape. Please
<https://www.dr-cos.info/kit->

How to sew bias tape. Please
<https://www.dr-cos.info/kit->

DRCOS

SITE <http://dr-cos.info/en> <http://dr-cos.com/jp>

MAIL info@dr-cos.com

Twitter [@drcos_com](https://twitter.com/@drcos_com)

facebook <https://www.facebook.com/drcoscom>

Bonding line AB

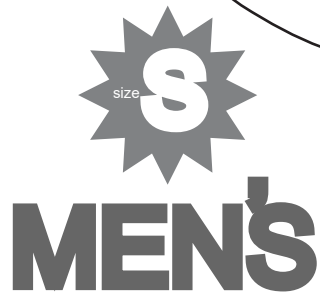
Facing Line

Bonding line AB

Facing Line

Bonding line Ca

Seam allowance 1/2in.



Hoodie
Facing one sheet
Fusible interlining one

Bonding line AC

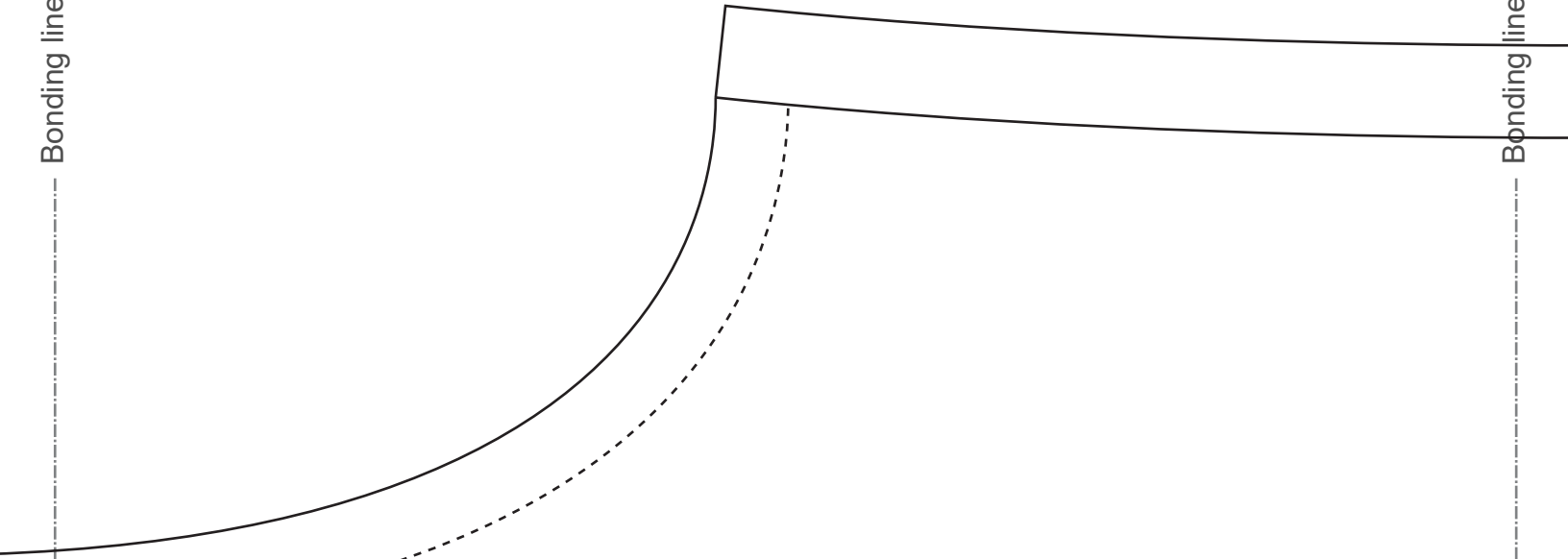


Bonding line BA



Hoodie
Back Body
one sheets

Bonding line Aa



Bonding line Ab

MEN'S

Hoodie
Back Body
one sheets

Seam allowance 1/2in.

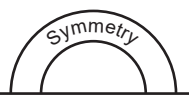
Bonding line BA

MEN'S

HC
Bac
one



What is "Grainline" cut on fold"?
Please refer to this page
<https://www.dr-cos.info/kt-grainline.html>



Bonding line Ba

Bonding line Bb

Bon



Bonding line Ca

Bonding line Ca

Bonding line BC

two sheets
one sheet



Seam allowance 1/2 in.

Bonding line Cb

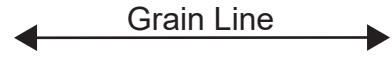
Bonding line Cb

MEN'S ^{size} S

Hoodie
Front Body
two sheets

Seam

Hoodie
Facing two
Fusible interlining

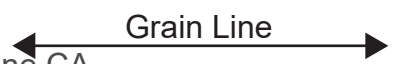


Bonding line Ab

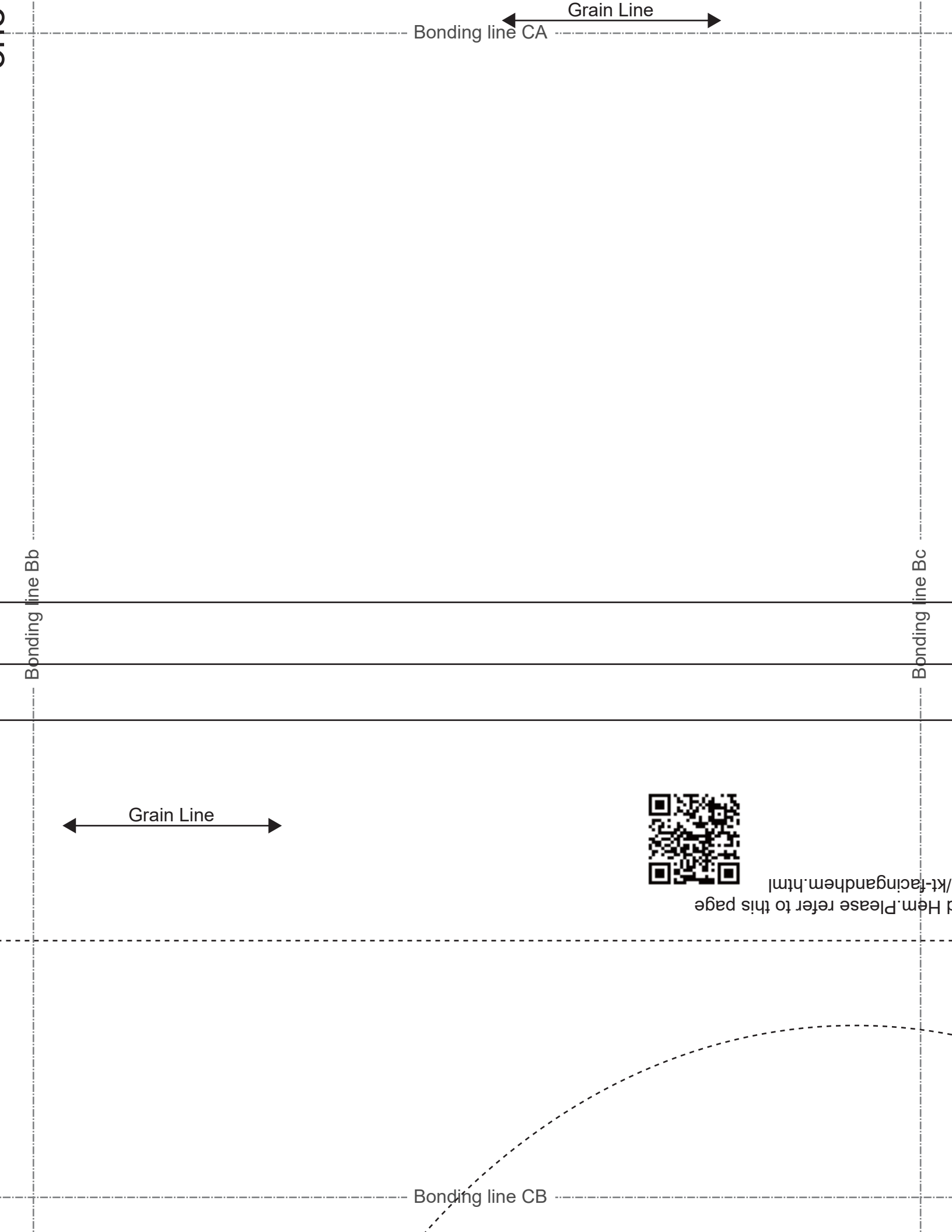
Seam allowance 1/2in.

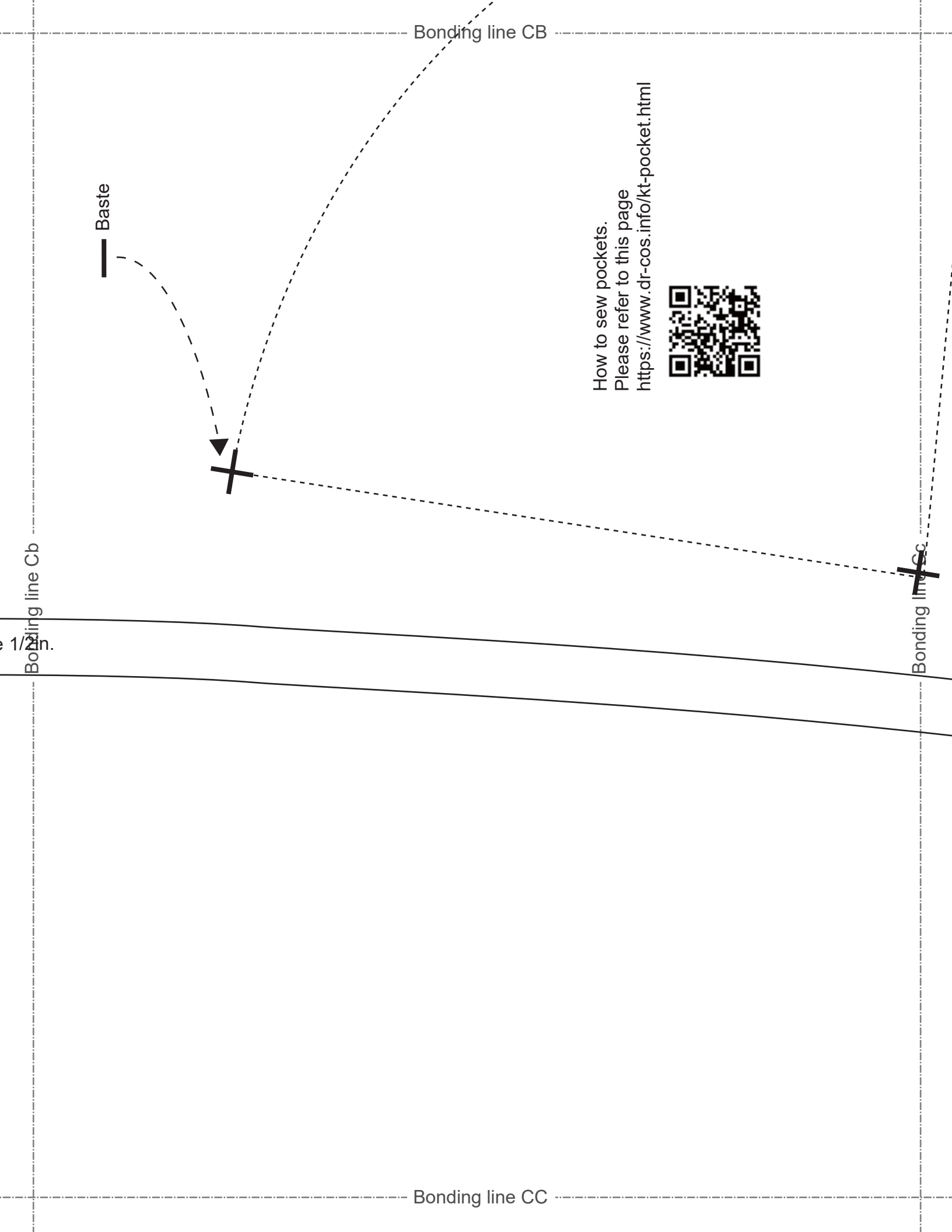
Bonding line Ac

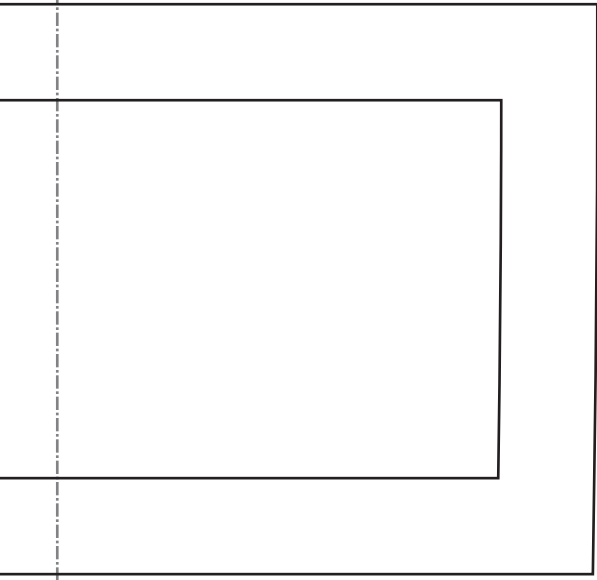
How to Serge/overlock (sewing machine & overlock sewing machine).
 Please refer to this page
<https://www.dr-cos.info/kt-serge.html>



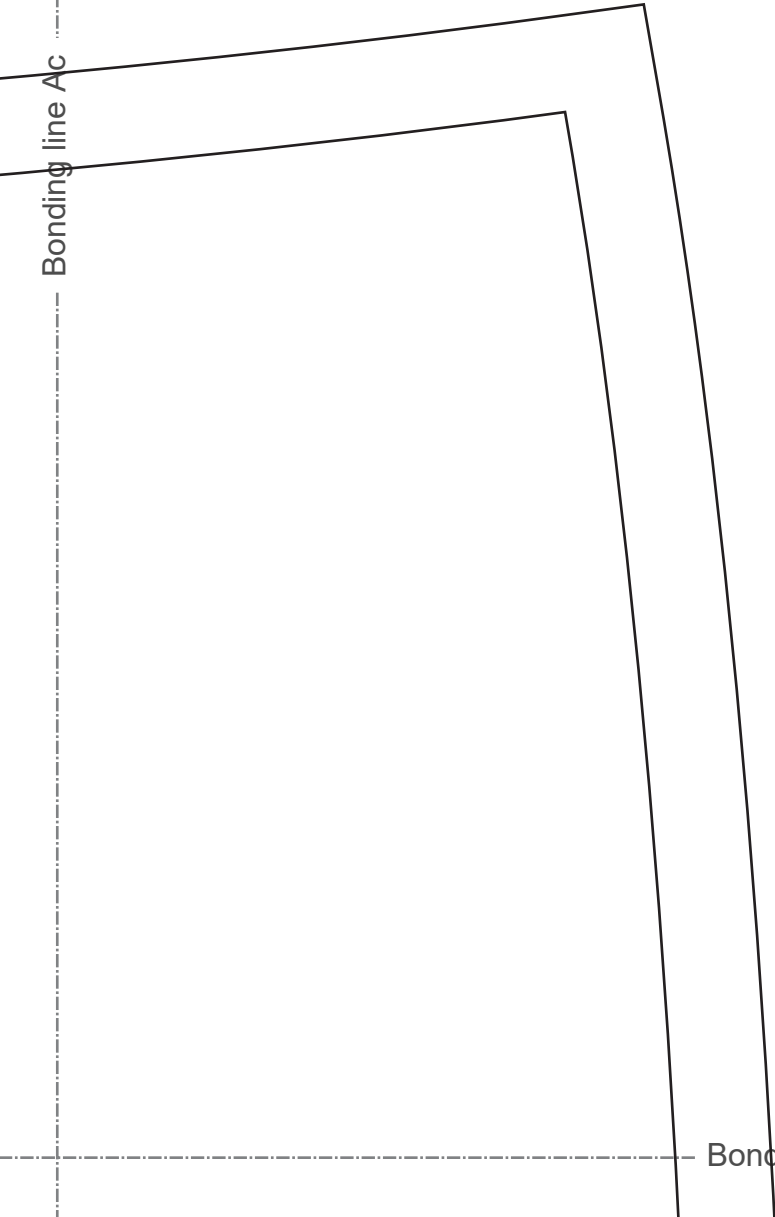
Bonding line CA







Bonding line Ac



Bonding line DA

Seam allowance 1/2in.

Bonding line Ad

M

Bonding line Bc

Bonding line DA

DRCOS

SITE <http://dr-cos.info/en> <http://dr-cos.com/jp>
MAIL info@dr-cos.com
Twitter https://twitter.com/dracos_com
facebook <https://www.facebook.com/dracoscom>

How to sew Facing and Hem.F
<https://www.dr-cos.info/kt-facn>



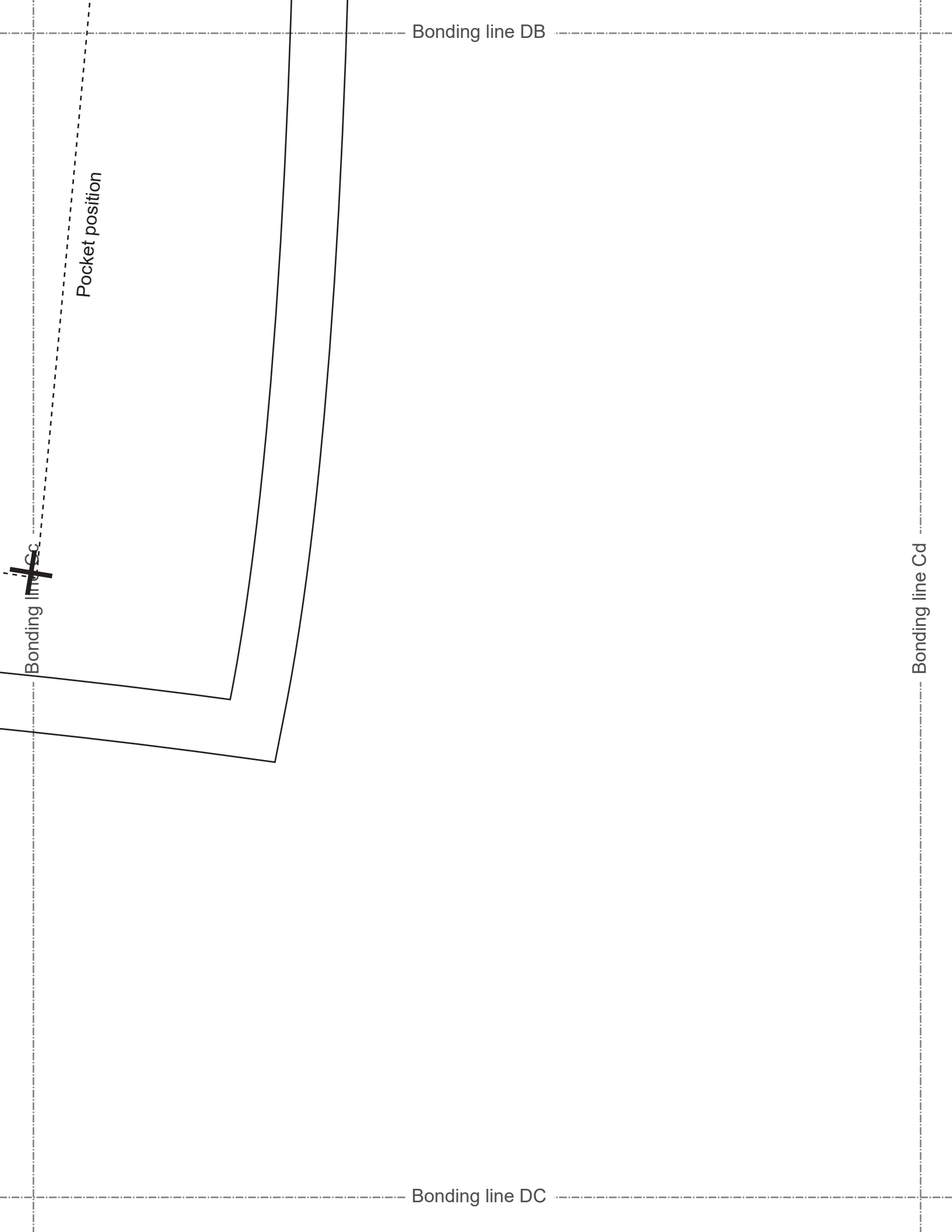
Bonding line DB

Seam allowance 1/2in.

ME



Bonding line Bd



Bonding line Ad

Bonding line Ae

DRCOS

SITE <http://dr-cos.info/en> <http://dr-cos.com/jp>

MAIL info@dr-cos.com

Twitter [@drcos_com](https://twitter.com/@drcos_com)

facebook <https://www.facebook.com/drcoscom>

MEN'S size **S**

Hoodie
Hood
two sheets



Bonding line EA

Bonding line EA

Bonding line Bd

MEN'S size **S**

Hoodie
Pocket
two sheets

DRCOS

SITE [http://dr-cos.info\(en\)](http://dr-cos.info(en)) [http://dr-cos.com\(jp\)](http://dr-cos.com(jp))
MAIL info@dr-cos.com
Twitter [@drcos_com](https://twitter.com/@drcos_com)
facebook <https://www.facebook.com/drcoscom>

Bonding line Be

Bonding line EB