



Hoodie
 Facing one sheets
 Fusible interlining one sheets

Grain Line

Seam allowance 1/2in.

Bonding line Aa

Facing Line

Bonding line AA

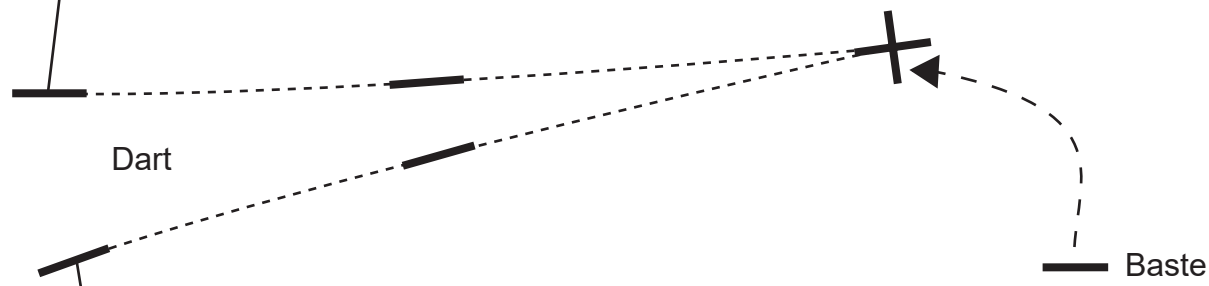


DR COS
E: info@dr-cos.info | <http://dr-cos.com>
MAIL: info@dr-cos.com
Twitter: <https://twitter.com/dr-cos>
Facebook: <https://www.facebook.com/dr-cos.com>

Bonding line AA



How to sew darts. Please refer to this page
<https://www.dr-cos.info/kt-darts.html>



Bonding line Ba

Bonding line AB

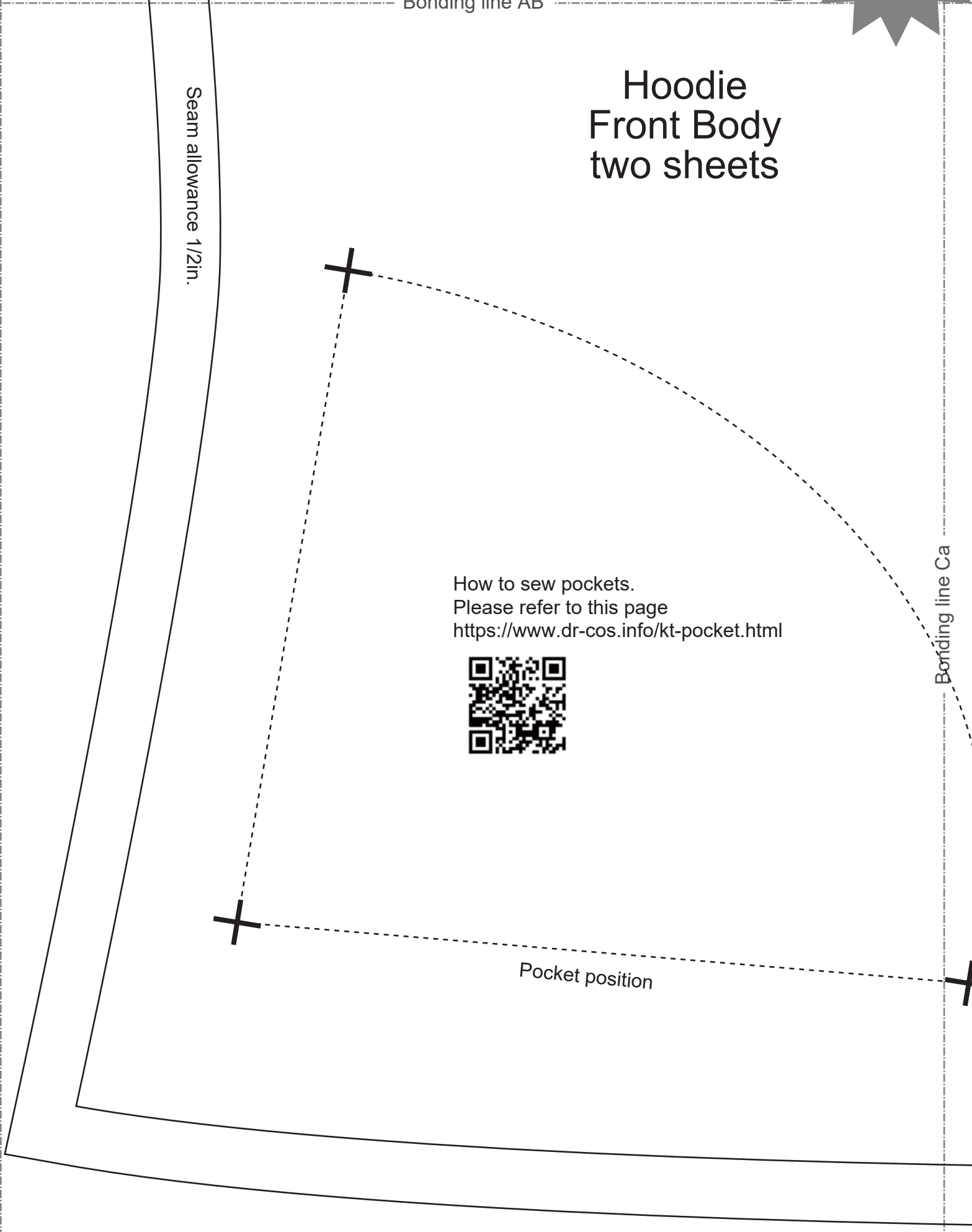
LADIES' M
size

Bonding line AB



Hoodie Front Body two sheets

Seam allowance 1/2in.



How to sew pockets.
Please refer to this page
<https://www.dr-cos.info/kt-pocket.html>



Pocket position

Bonding line Ca

Bonding line AC

Bonding line Aa


 MAIL: info@drcos.com
 SITE: <http://drcos.info/en> / <http://drcos.com/it/>
 Twitter: <https://twitter.com/drcos.com>
 Facebook: <https://www.facebook.com/drcos.com>


LADIES' M
 size

Bonding line BA

Bonding line Ab

Bonding line Ba

Bonding line BA

DRCOS

SITE [http://dr-cos.info\(en\)](http://dr-cos.info(en)) [http://dr-cos.com\(jp\)](http://dr-cos.com(jp))
MAIL info@dr-cos.com
Twitter https://twitter.com/@drcos_com
facebook <https://www.facebook.com/drcoscom>

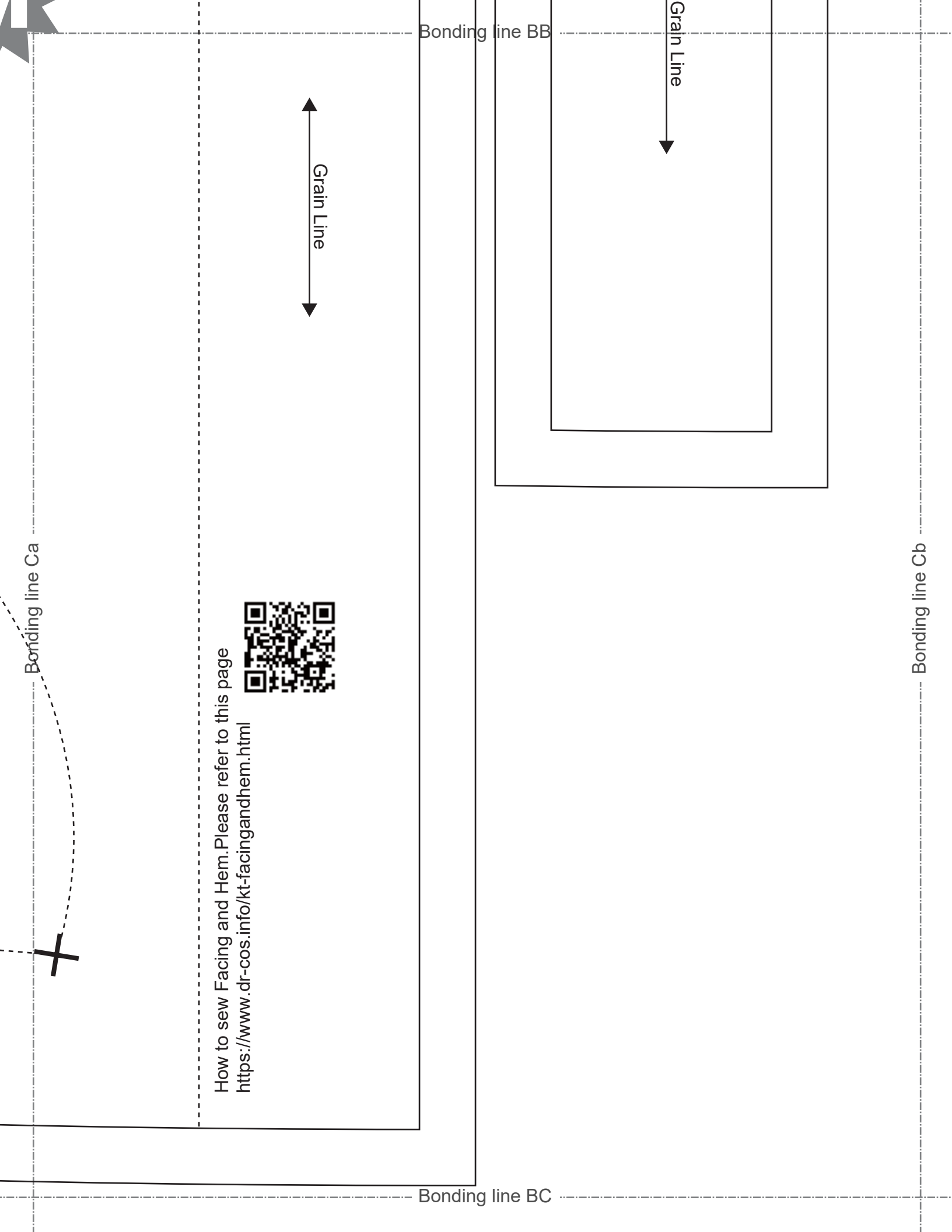
Hoodie
Facing two sheets
Fusible interlining two sheets

Seam allowance 1/2in.

Bonding line Bb

Bonding line BB

Grain Li
↑



Bonding line Ca

Bonding line BB

Bonding line BC

Bonding line Cb

Grain Line

Grain Line

How to sew Facing and Hem. Please refer to this page

<https://www.dr-cos.info/kt-facingandhem.html>



Bonding line Ab

Bonding line Ac

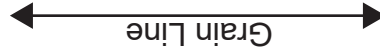
Seam allowance 1/2"

Bonding line CA

How to Serge/overlock (sewing machine & overlock sewing machine).

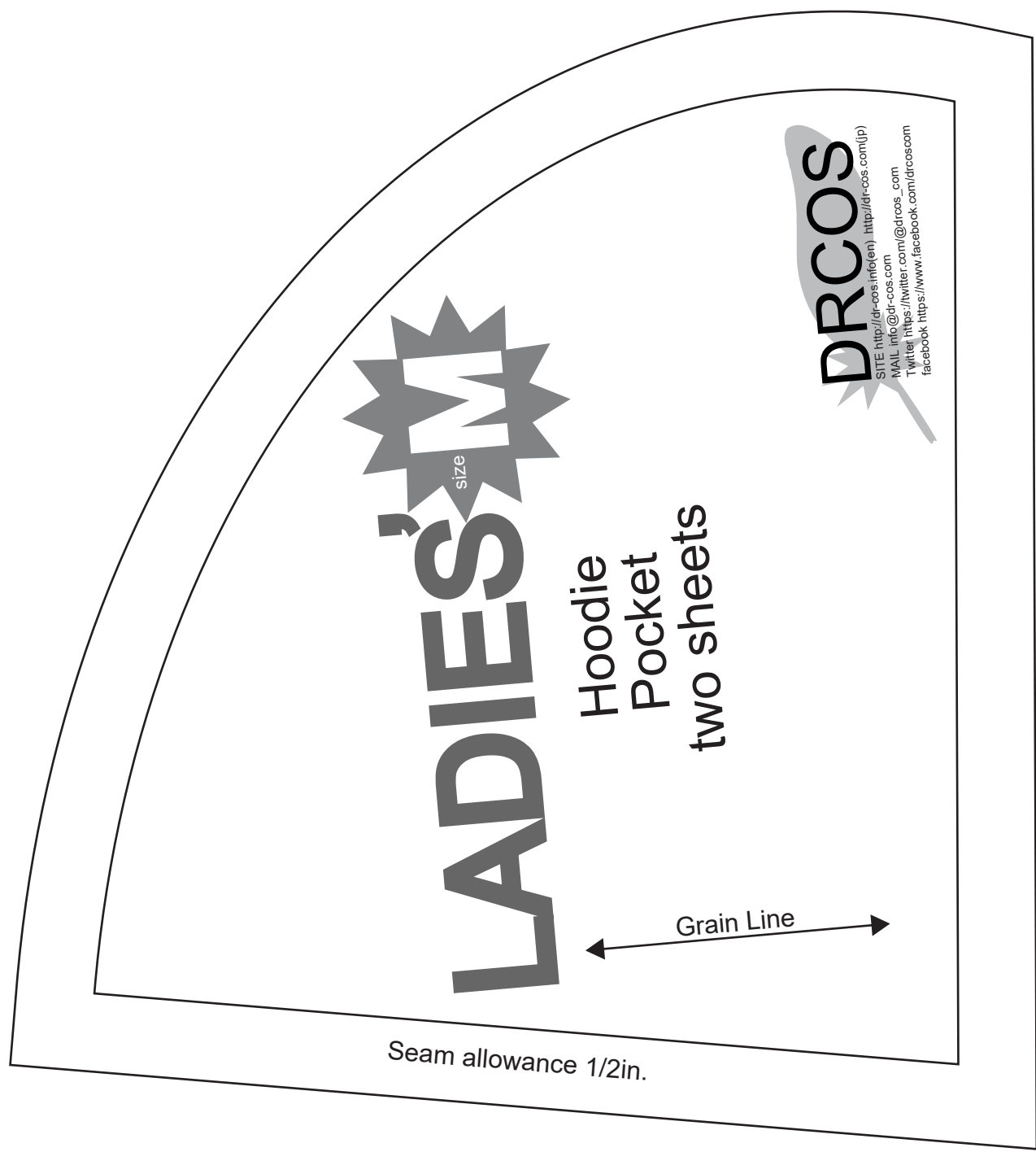
Please refer to this page

<https://www.dr-cos.info/kt-serge.html>



DRCCOS

SITE <http://dr-cos.info/en> <http://dr-cos.com/jp>
MAIL info@dr-cos.com
Twitter <https://twitter.com/drccos>
facebook <https://www.facebook.com/drccos.com>



Seam allowance 1/2in.

Bonding line Ad



What is "Grainline""cut on fold"?"
Please refer to this page
<https://www.dr-cos.info/kt-grainline.html>



LADIES' M

Hoodie
Back Body
one sheets

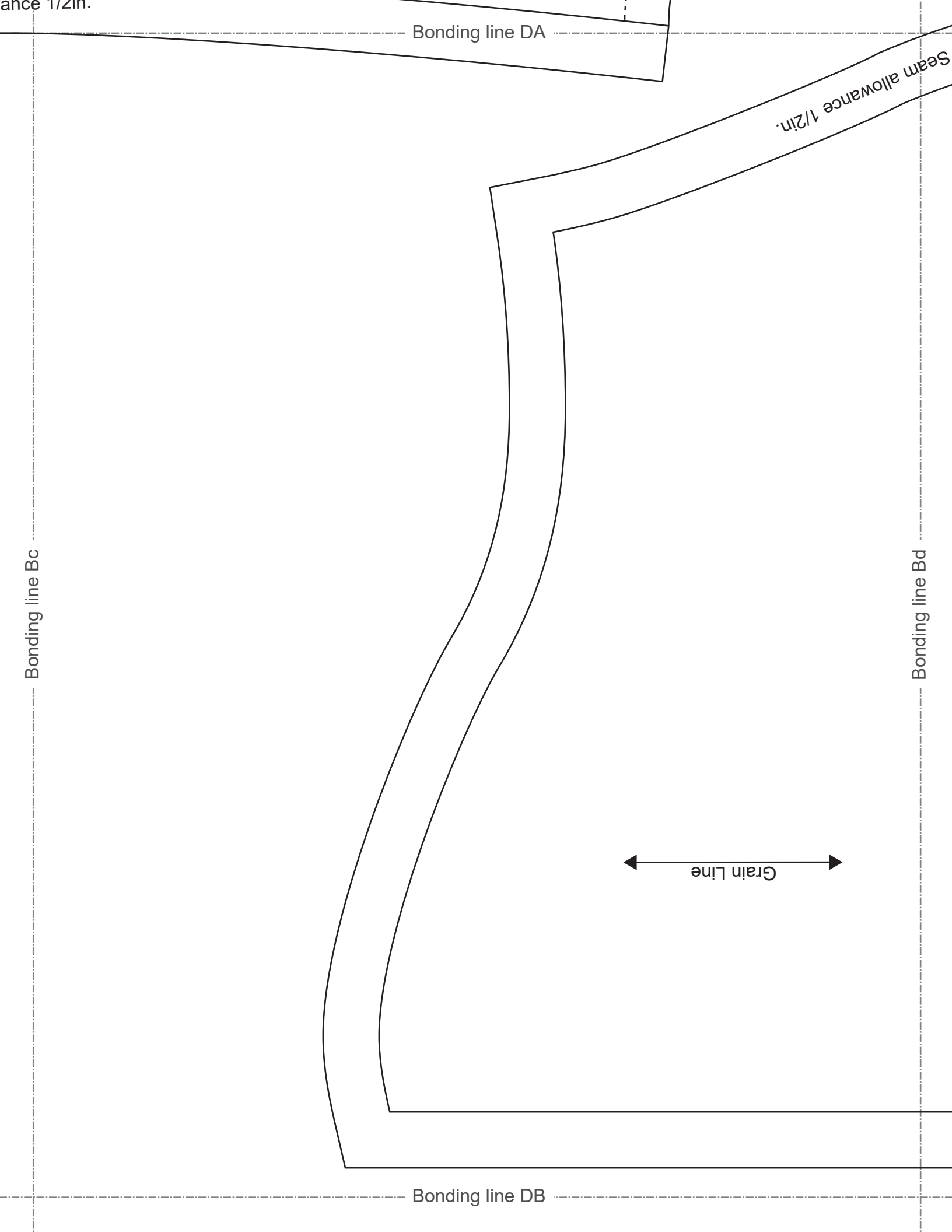


Bonding line Ac

Bonding line DA

ance 1/2in.

Seam



Bonding line Ae

Facing Line

How to make bias tape. Please refer to this page
<https://www.dr-cos.info/kt-biastape.html>



How to sew bias tape. Please refer to this page
<https://www.dr-cos.info/kt-biastape3.html>



Bonding line Ad

Bonding line EA

Seam

Bonding line EA

Seam at

Bonding line Bd

Bonding line Be

LADIES'

Hoodie
Hood
two sheets

DRCOS
 SITE <http://dr-cos.info/en> <http://dr-cos.com/jp>
 MAIL info@dr-cos.com
 Twitter <https://twitter.com/dr-cos.com>
 facebook <https://www.facebook.com/drcos.com>

Bonding line EB