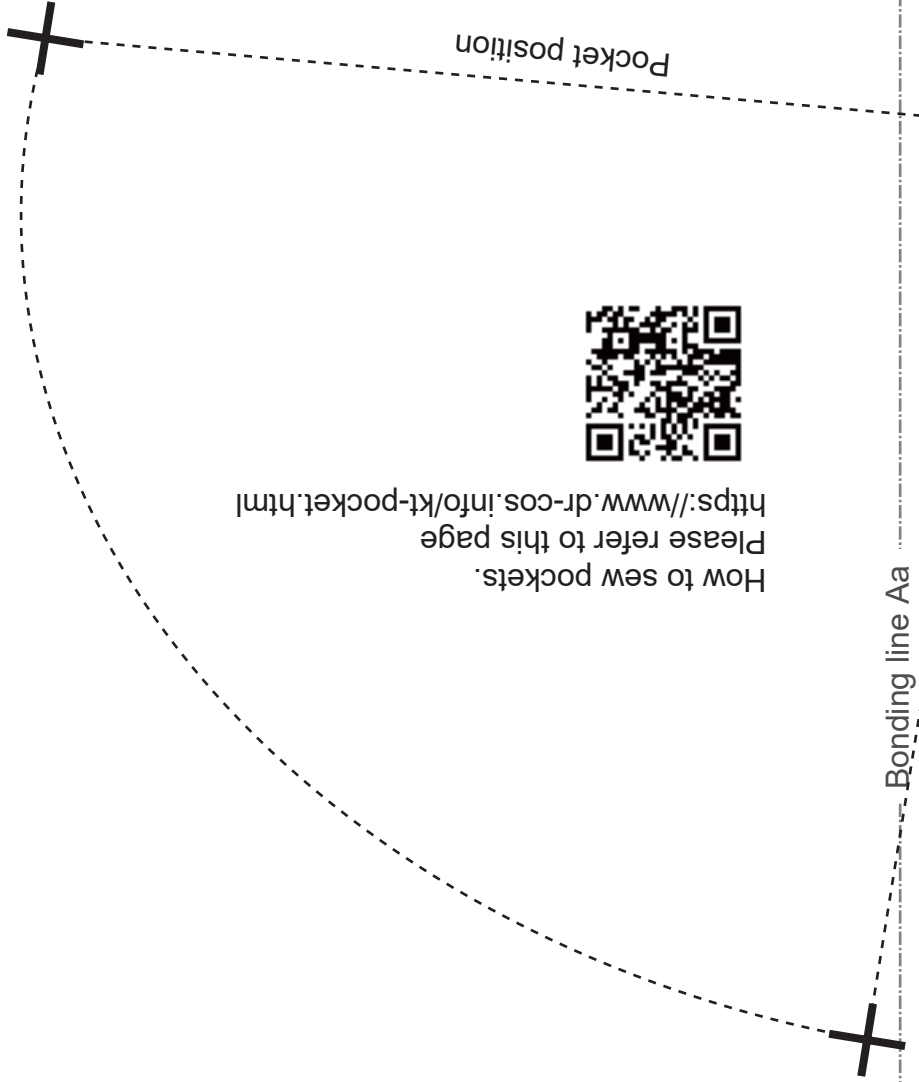


## Hoodie Front Body two sheets



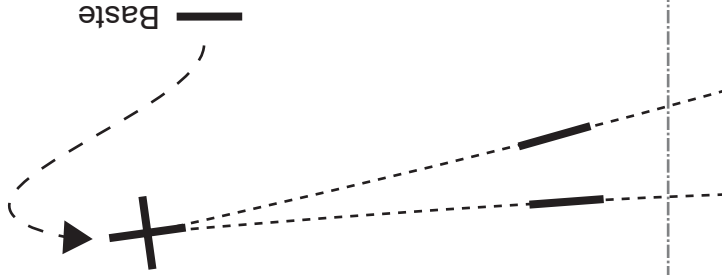
How to sew pockets.  
Please refer to this page  
<https://www.dr-cos.info/kt-pocket.html>



How to sew Facing and Hem. Please refer to this page  
<https://www.dr-cos.info/kt-facingandhem.html>



Grain Line



How to sew darts. Please refer to this page  
<https://www.dr-cos.info/kt-darts.html>



facebook <https://www.facebook.com/drcoscom>  
Twitter [https://twitter.com/drcos\\_com](https://twitter.com/drcos_com)  
MAIL [info@dr-cos.com](mailto:info@dr-cos.com)  
SITE <http://dr-cos.info/en> <http://dr-cos.com/jp>

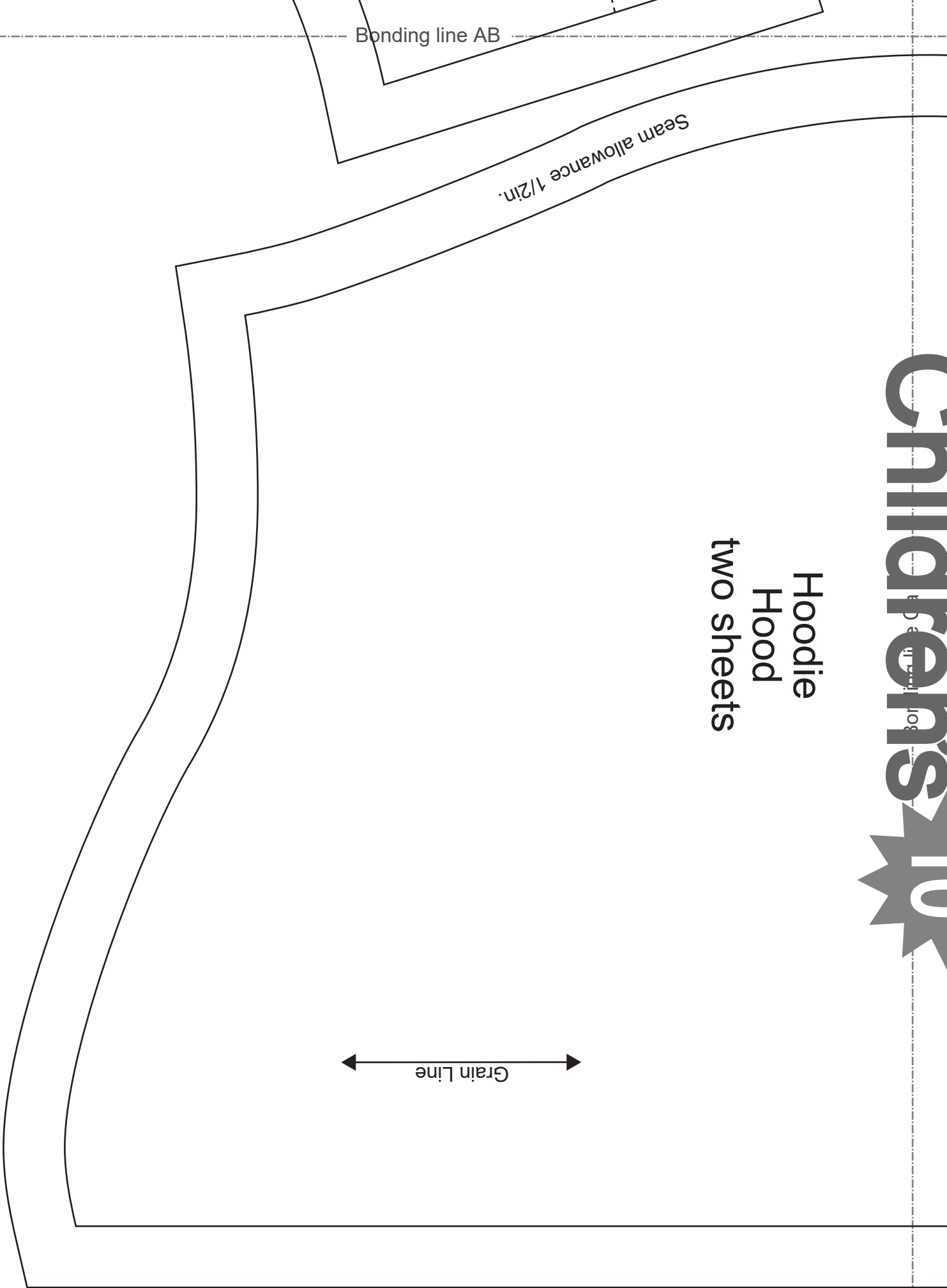
# DRCOS

Facing Line

Bonding line Ba

Bonding line AB

## Hoodie Hood two sheets

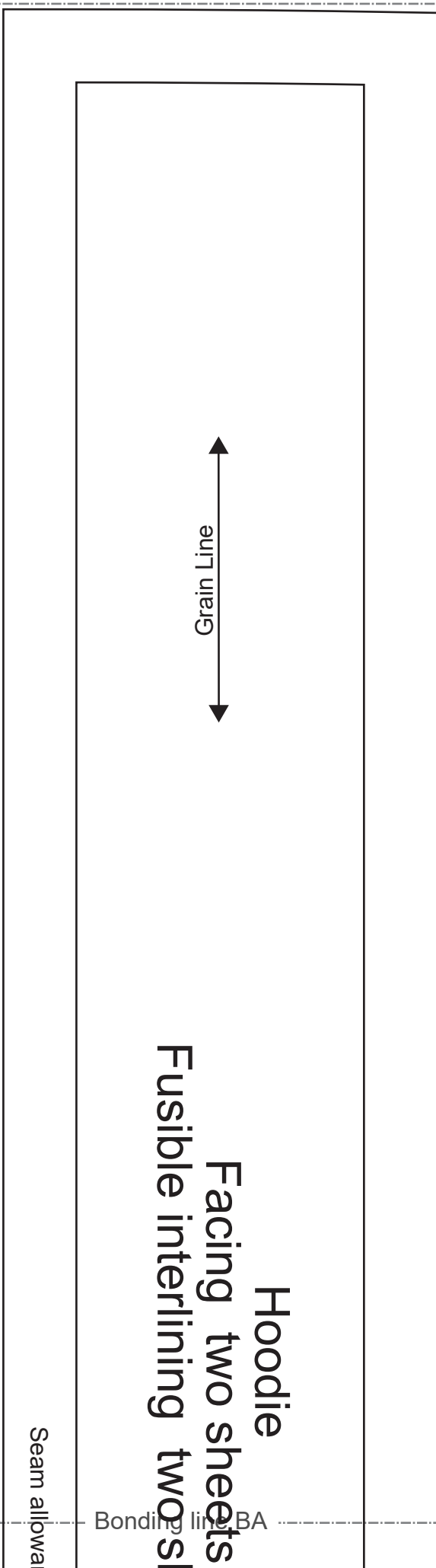
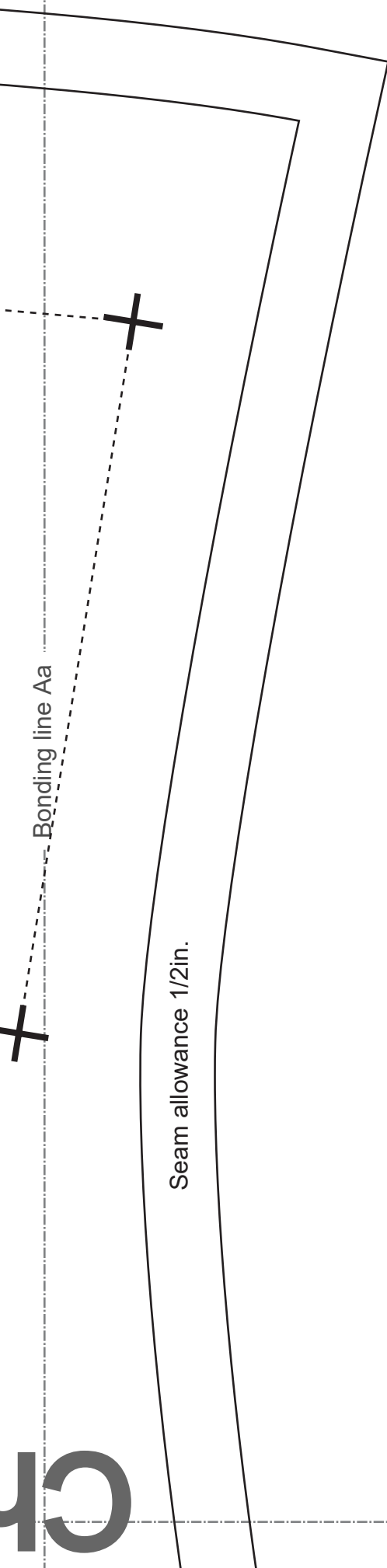


Bonding line AB

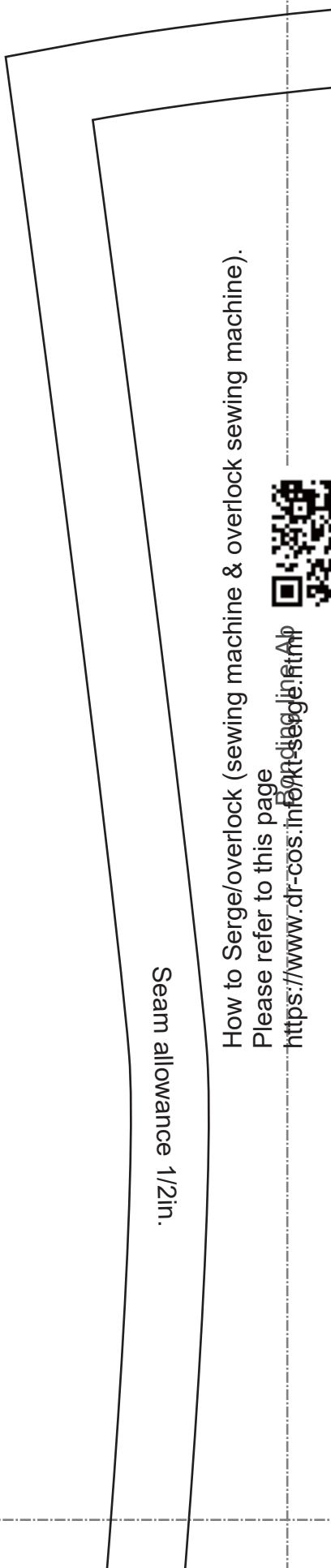
Seam allowance 1/2in.

Grain Line

Bonding line AC



## Hoodie Facing two sheets Fusible interlining two sheets



How to Serge/overlock (sewing machine & overlock sewing machine).  
Please refer to this page  
<https://www.dr-cos.info/rt-serge.html>



Bonding line BA

Children's  
sheets

allowance 1/2in.

# Children's size 10

Bonding line Bb



Bonding line BB

Dart

Bonding line Ba

Bonding line BB

# Children's **10**

size

**DRCOS**  
 SITE <http://dr-cos.info/en> <http://dr-cos.com/fp>  
 MAIL [info@dr-cos.com](mailto:info@dr-cos.com)  
 Twitter <https://twitter.com/@drcos>  
 facebook <https://www.facebook.com/drcos.com>

Bonding line BC

SO  
<http://dr-cos.com/fp>  
 @drcos.com  
 book.com/drcos.com

Bonding line Cb

size

Seam allowance 1/2in.



# Children's

Hoodie  
Back Body  
one sheets



**DRCOS**  
SITE [http://dr-cos.info\(en\)](http://dr-cos.info/en) [http://dr-cos.com\(jp\)](http://dr-cos.com(jp))  
MAIL [info@dr-cos.com](mailto:info@dr-cos.com)  
Twitter [https://twitter.com/dr-cos\\_com](https://twitter.com/dr-cos_com)  
facebook <https://www.facebook.com/drcoscom>



What is "Grainline" cut on fold?  
Please refer to this page  
<https://www.dr-cos.info/kt-grainline.html>



How to sew bias tape. Please refer to this page  
<https://www.dr-cos.info/kt-biastape3.html>



How to make bias tape. Please refer to this page  
<https://www.dr-cos.info/kt-biastape.html>

Facing Line

Bonding line Bb

Bonding line Bc

Bonding line CB

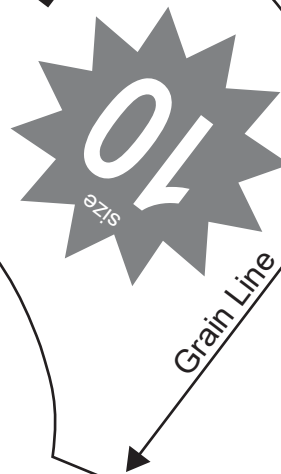


Bonding line CB

**DRCOS**  
SITE <http://dr-cos.info/en> <http://dr-cos.com/jp>  
MAIL [info@dr-cos.com](mailto:info@dr-cos.com)  
Twitter [https://twitter.com/drcos\\_com](https://twitter.com/drcos_com)  
facebook <https://www.facebook.com/drcoscom>

Hoodie  
Facing one sheets  
Fusible interlining one sheets

Seam allowance 1/2in.



Hoodie  
Pocket  
two sheets

**DRCOS**

SITE <http://dr-cos.info/en> <http://dr-cos.com/jp>  
MAIL [info@dr-cos.com](mailto:info@dr-cos.com)  
Twitter [https://twitter.com/drcos\\_com](https://twitter.com/drcos_com)  
facebook <https://www.facebook.com/drcoscom>

Bonding line Cb

Bonding line Cc

Bonding line CC