

DRCC

SITE [http://dr-cos.info\(en\)](http://dr-cos.info(en)) <http://dr-cos.com>

MAIL info@dr-cos.com

Twitter <https://twitter.com/drcc>

facebook <https://www.facebook.com/drcc>

Bonding line AA

Bonding line AA

Bonding line AA



Bas

Gored s
Body
eight sh

Bonding line aa

LADIE

Bonding line AB

Bonding line AB

Seam allowance 1/2

Bonding line Ca



Placket

Grain L

Bonding line AC

RCOS

rcos.info(en) [http://dr-cos.com\(jp\)](http://dr-cos.com(jp))
rcos.com|
twitter.com/@drcos_com
//www.facebook.com/drcoscom

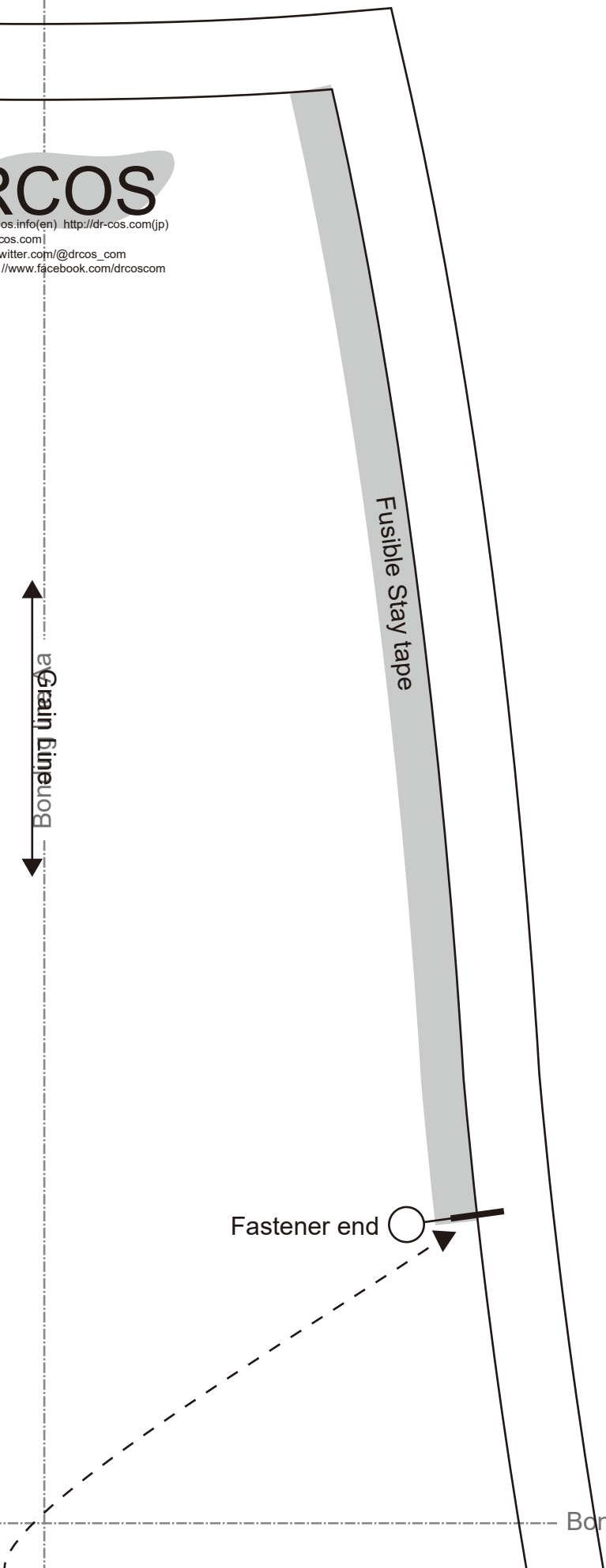
Bonding line Aa

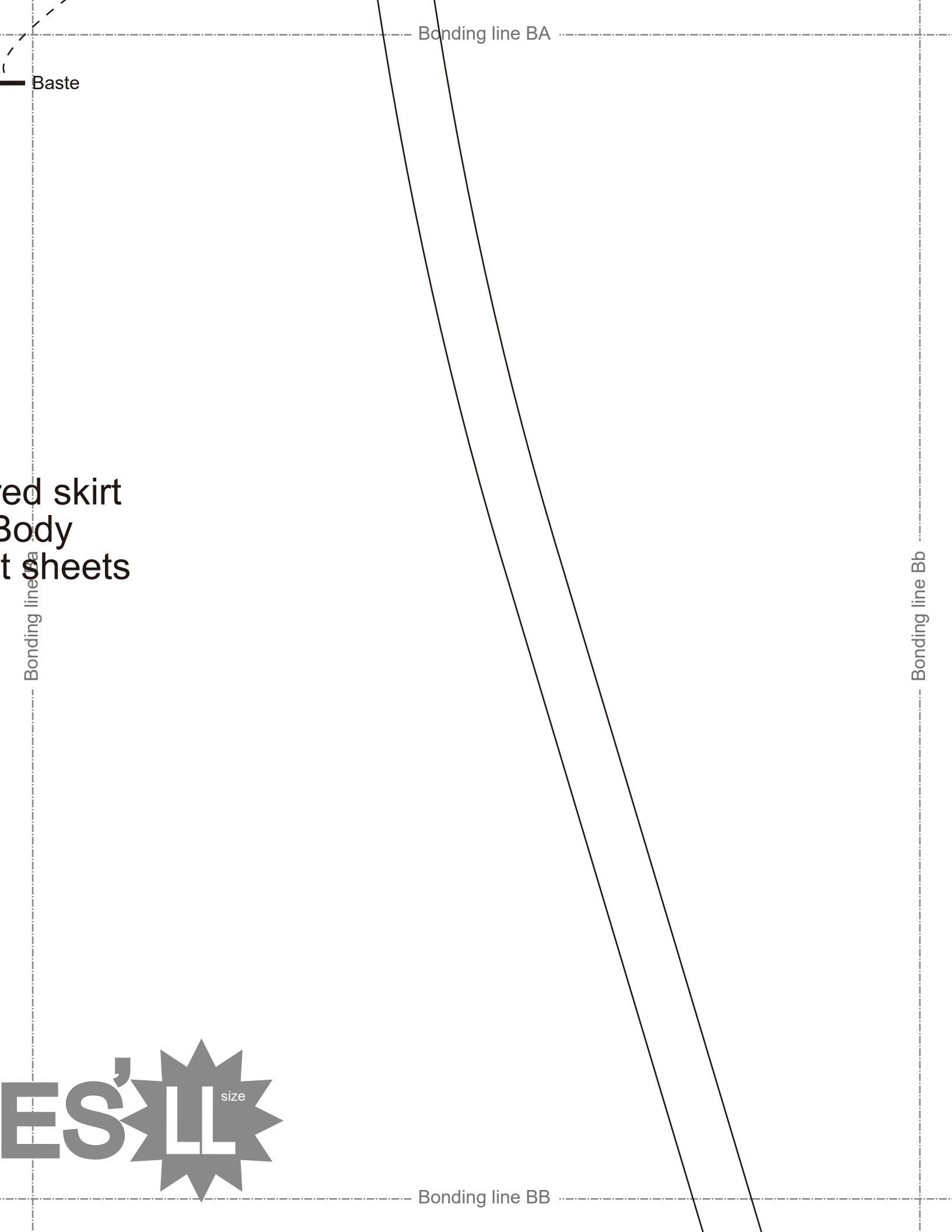
Fusible Stay tape

Fastener end

Bonding line BA

Bonding line Ab





Baste

Bonding line BA

ed skirt
Body
t sheets

Bonding line Ba

Bonding line Bb



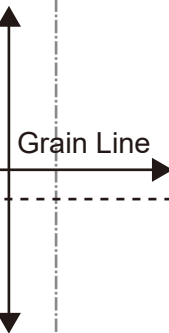
Bonding line BB

Bonding line BB

Distance 1/2in.

Bonding line Ca

Bonding line Cb



Gored skirt
 Belt
 one sheets
 Fusible interlining
 one sheets

Bonding line BC

Bonding line CB

Bonding line Cb

Bonding line Cc

skirt

heets
erlining
eets

LAD

Seam allowance 1/2in.

Bonding line CC

Bonding line DB

Bonding line Cc

Bonding line Cd

ADIES'  size

Bonding line DC

Bonding line EB

Bonding line Cd

Bonding line Ce

DRCOS

SITE [http://dr-cos.info\(en\)](http://dr-cos.info(en)) [http://dr-cos.com\(jp\)](http://dr-cos.com(jp))

MAIL info@dr-cos.com

Twitter [@drcos_com](https://twitter.com/@drcos_com)

facebook <https://www.facebook.com/drcoscom>

Bonding line EC