

Bonding line AA

[Home](#)

[Back to Gauchopants page](#)

Bonding line Ba

Folding line

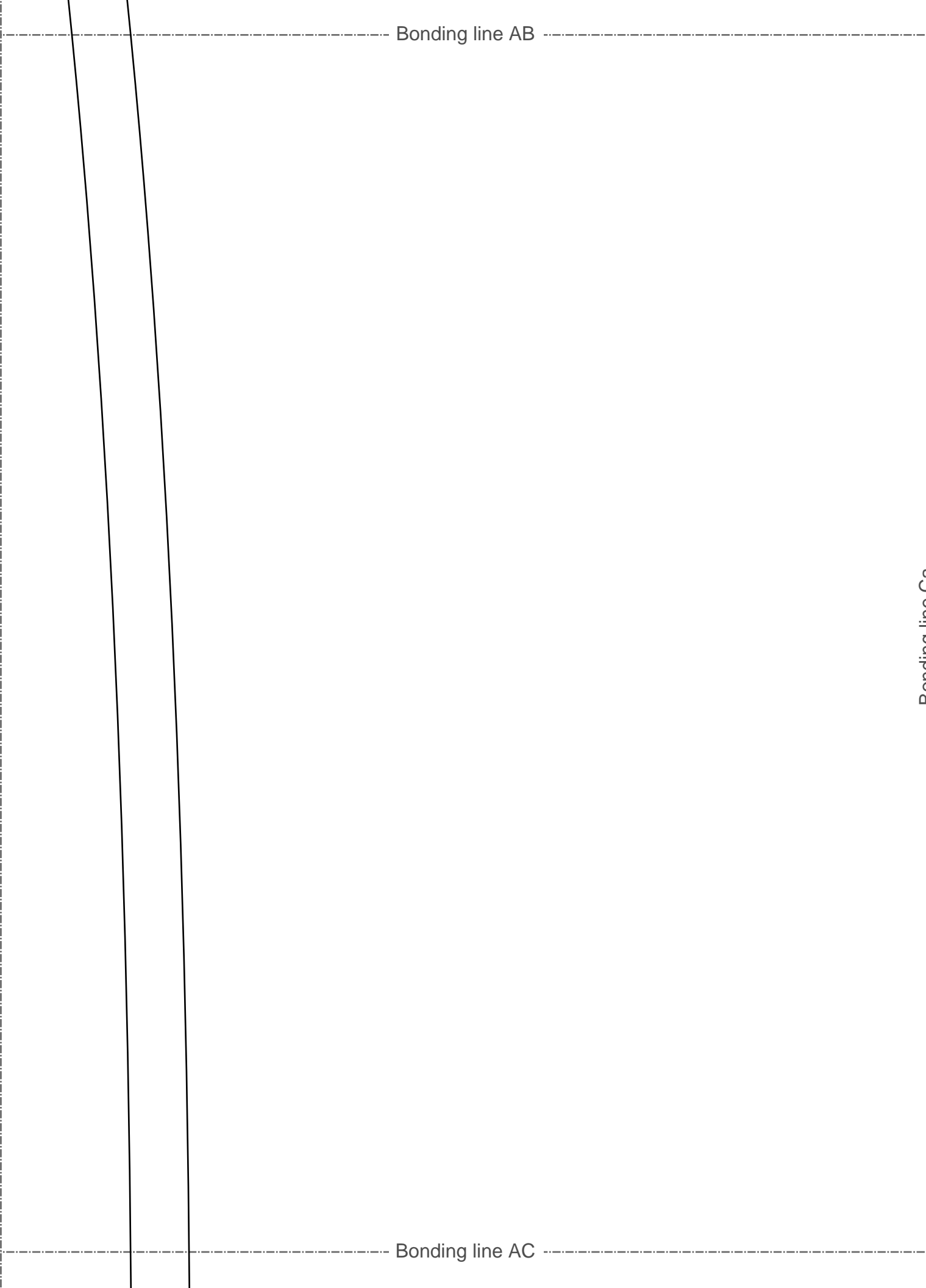
Folding line

Bonding line AB

Bonding line AB

Bonding line AC

Bonding line Ca



Bonding line AC

LA

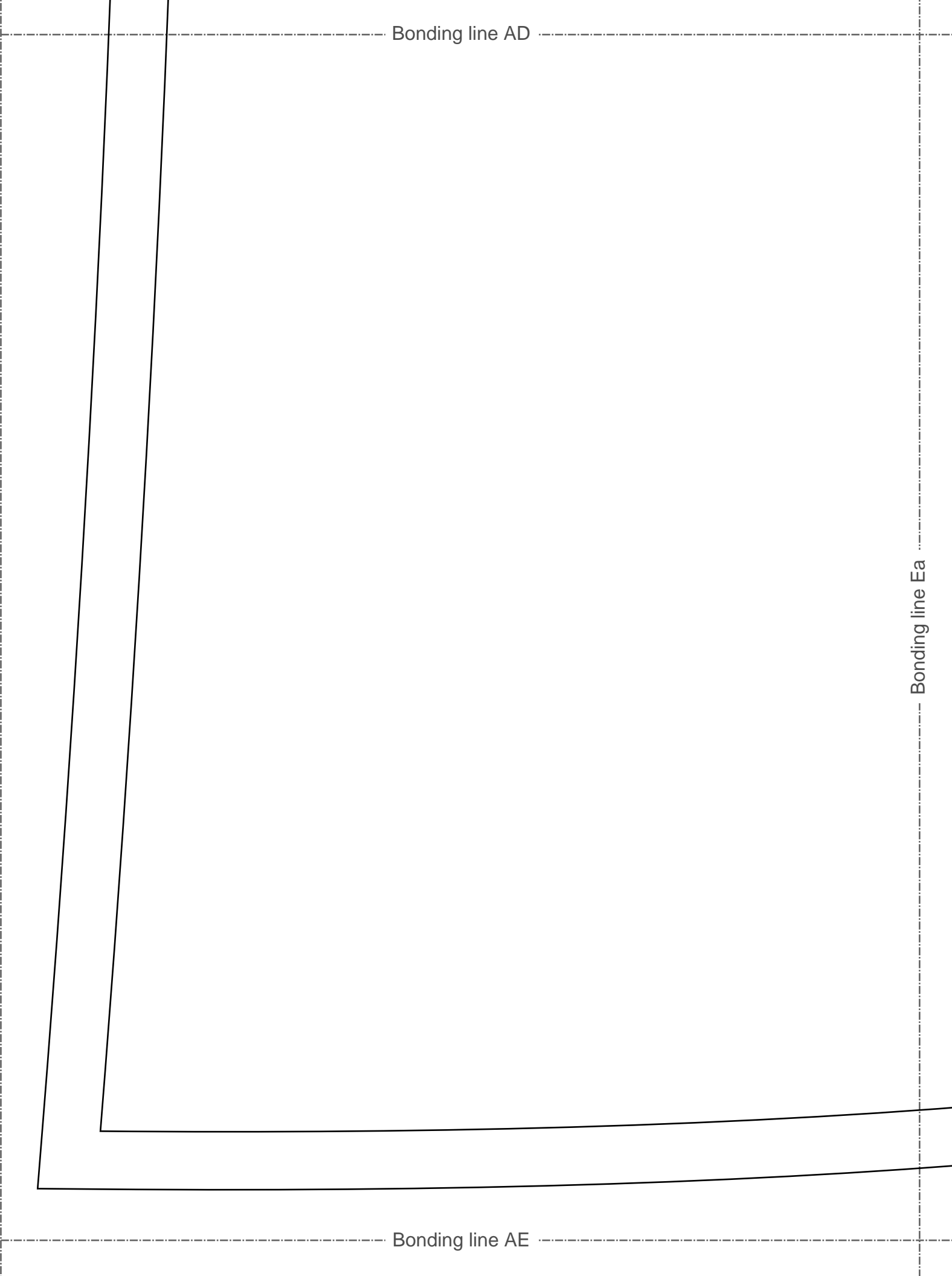
Bonding line Da

Bonding line AD

Bonding line AD

Bonding line Ea

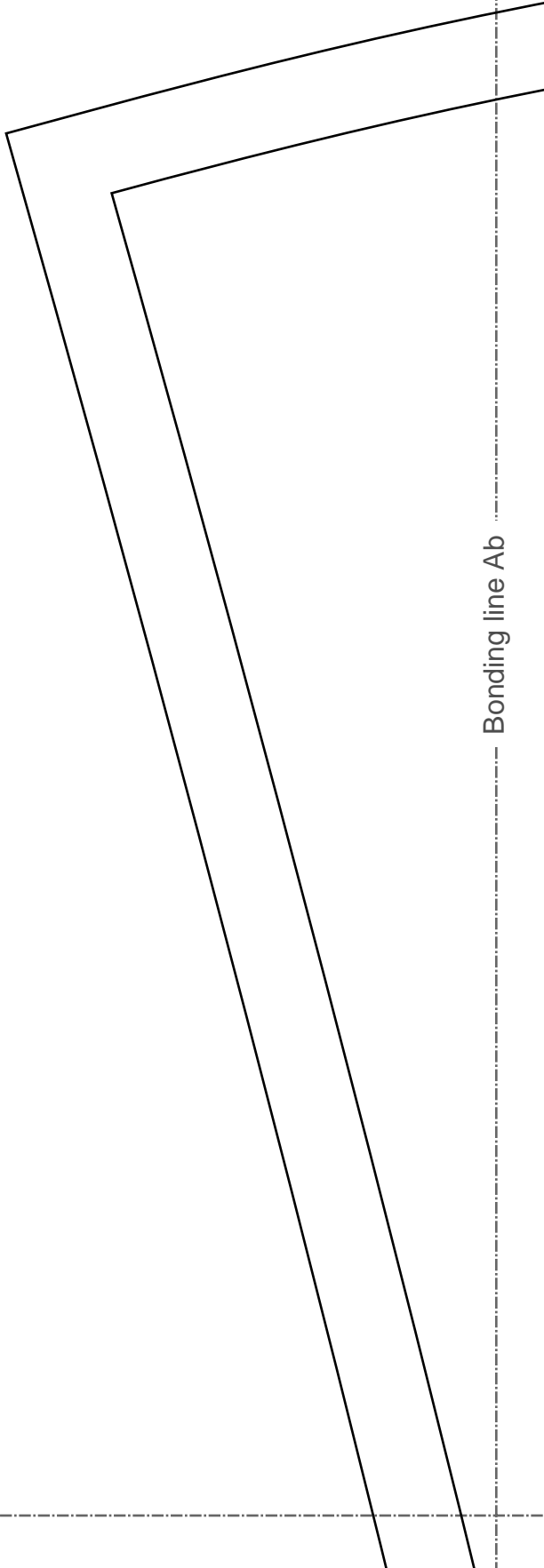
Bonding line AE



Bonding line Aa

Bonding line Ab

Bonding line BA



Bonding line BA

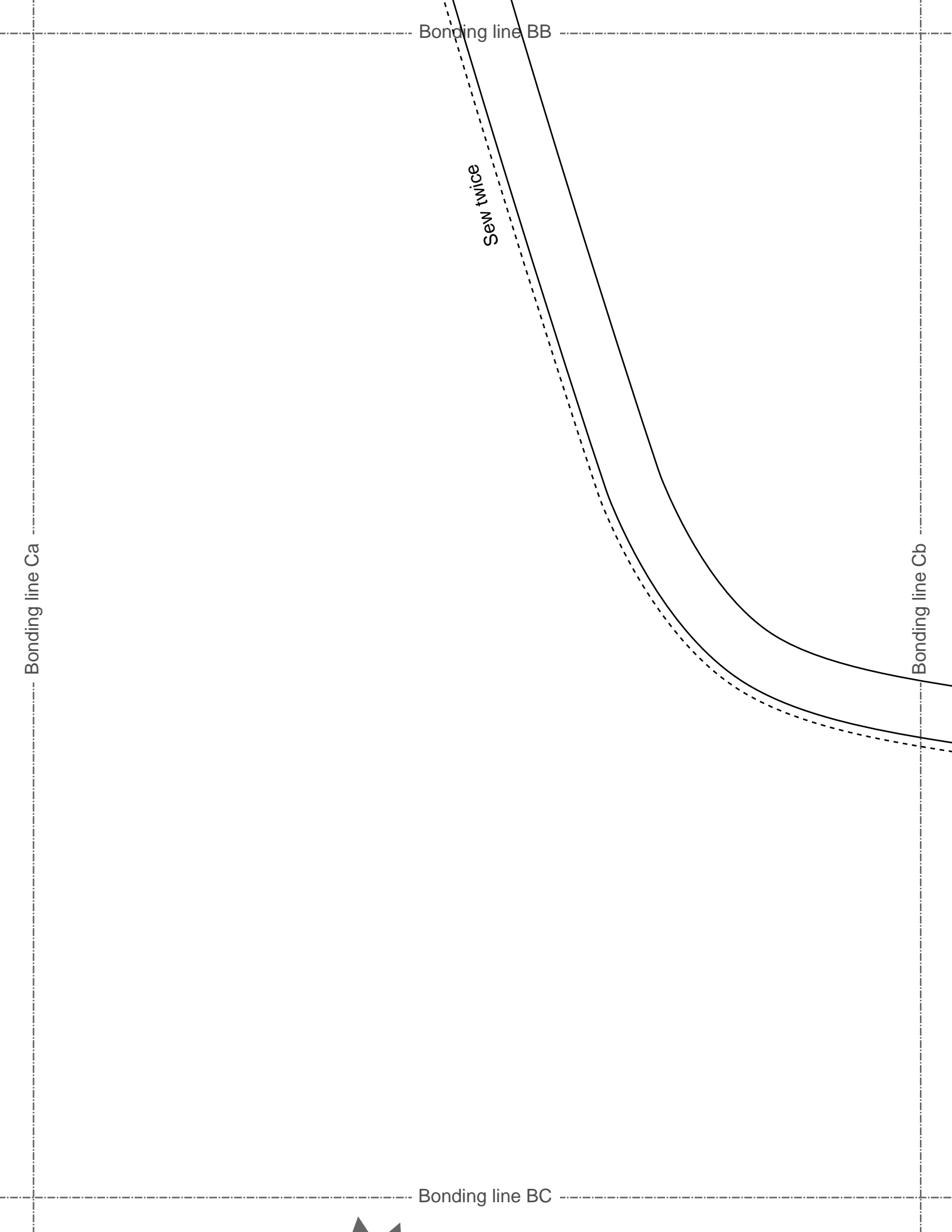
Bonding line Ba

Bonding line Bb

DRCOS

SITE <http://dr-cos.info/en> <http://dr-cos.com/jp>
MAIL info@dr-cos.com
Twitter https://twitter.com/drcos_com
facebook <https://www.facebook.com/drcoscom>

Bonding line BB



Bonding line BC

ADIES'  size

Gauchopants
Back body
two sheets

Bonding line Da

Bonding line Db



Bonding line BD

Bonding line Ea

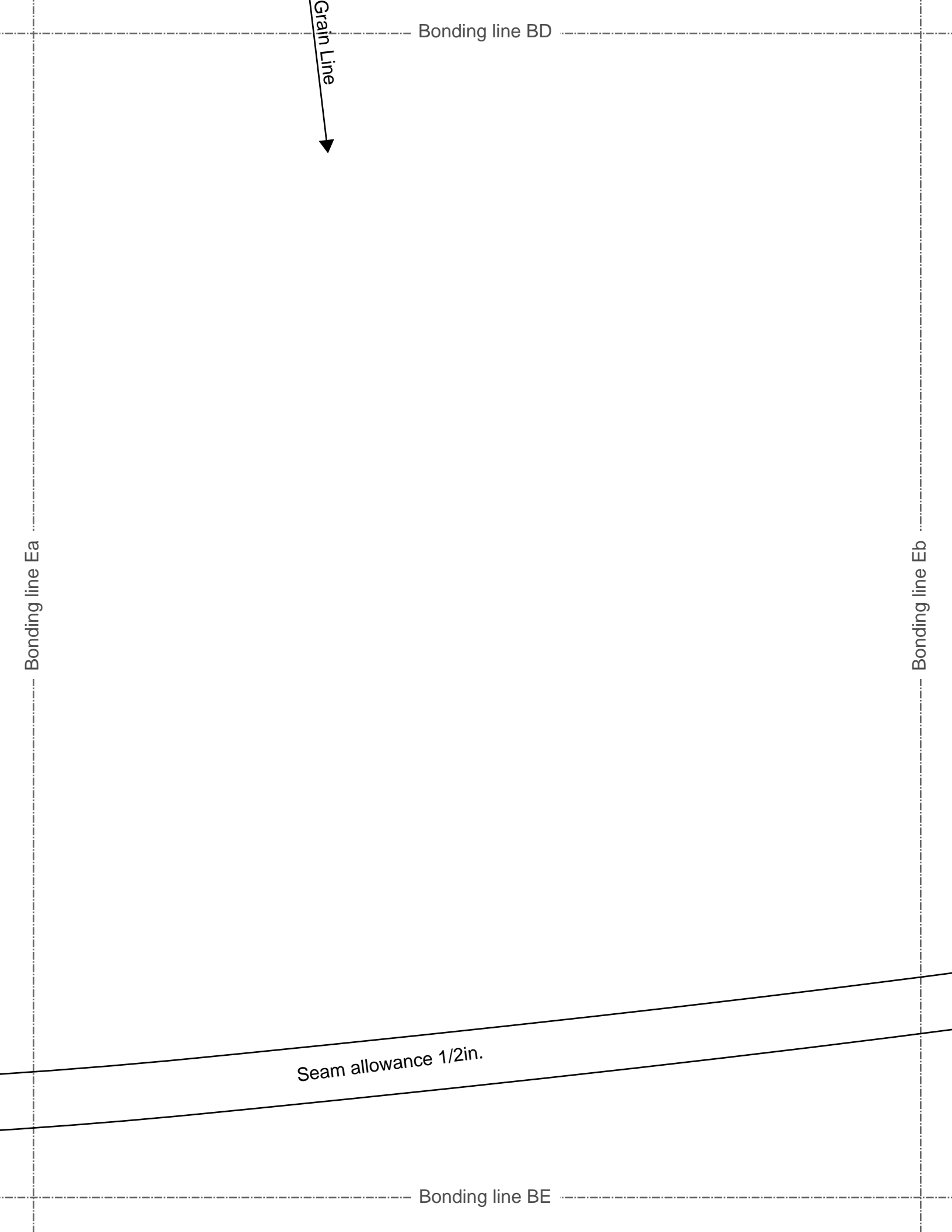
Bonding line BD

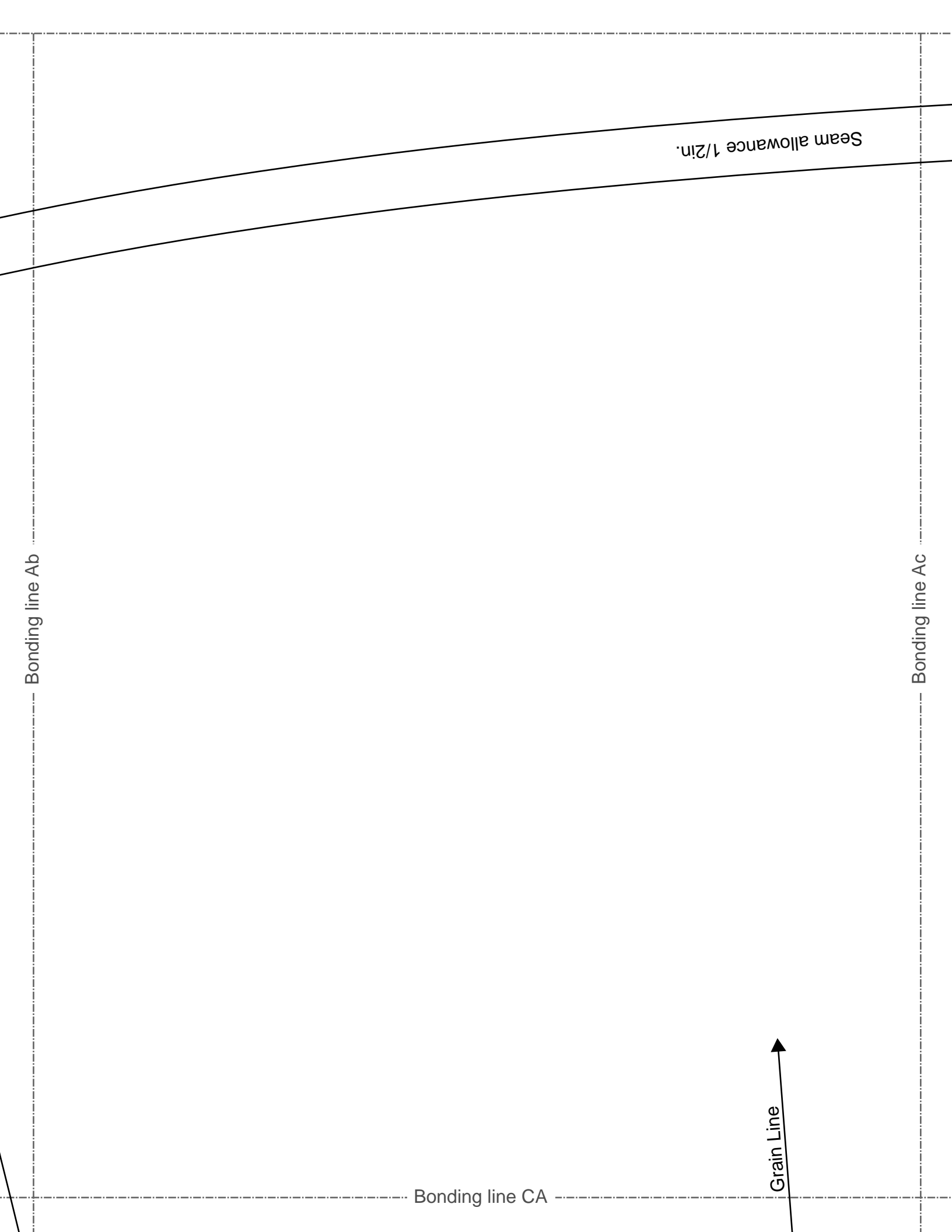
Grain Line

Bonding line Eb

Seam allowance 1/2in.

Bonding line BE





Seam allowance 1/2 in.

Bonding line Ab

Bonding line Ac

Bonding line CA

Grain Line

Bonding line CA

Gr



Bonding line Bb

Bonding line Bc

anchopants
Front body
two sheets



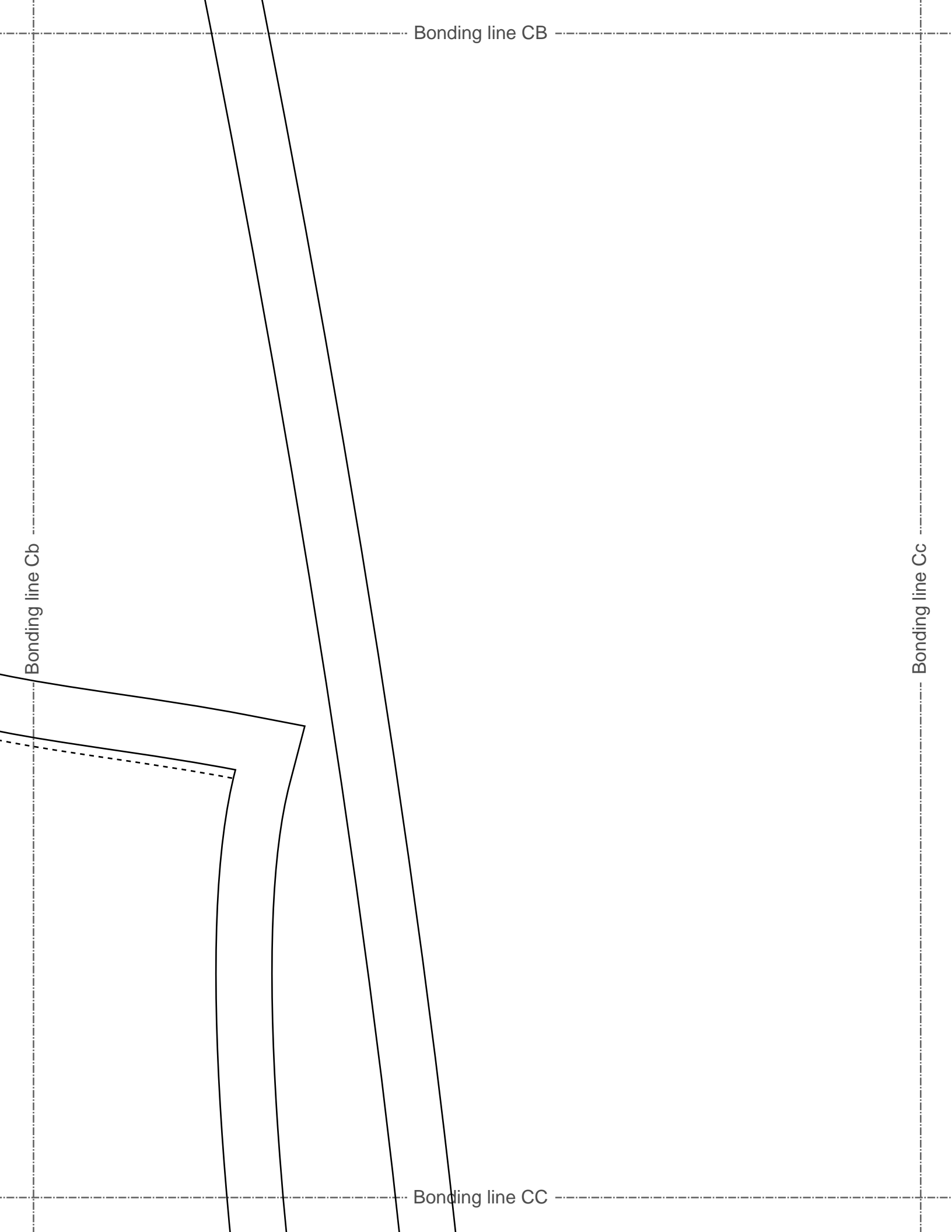
Bonding line CB

Bonding line CB

Bonding line Cb

Bonding line Cc

Bonding line CC



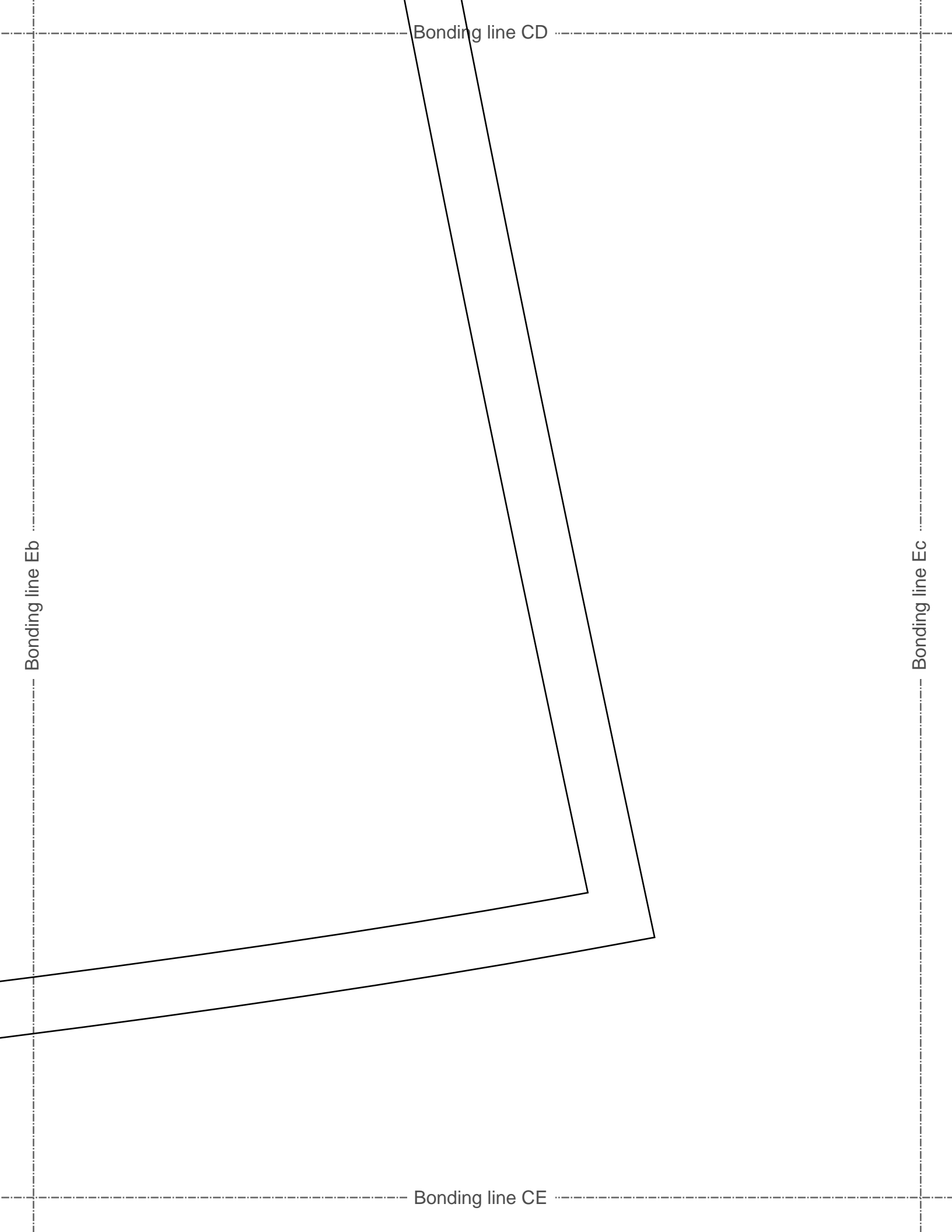
Bonding line CC



Bonding line Db

Bonding line Dc

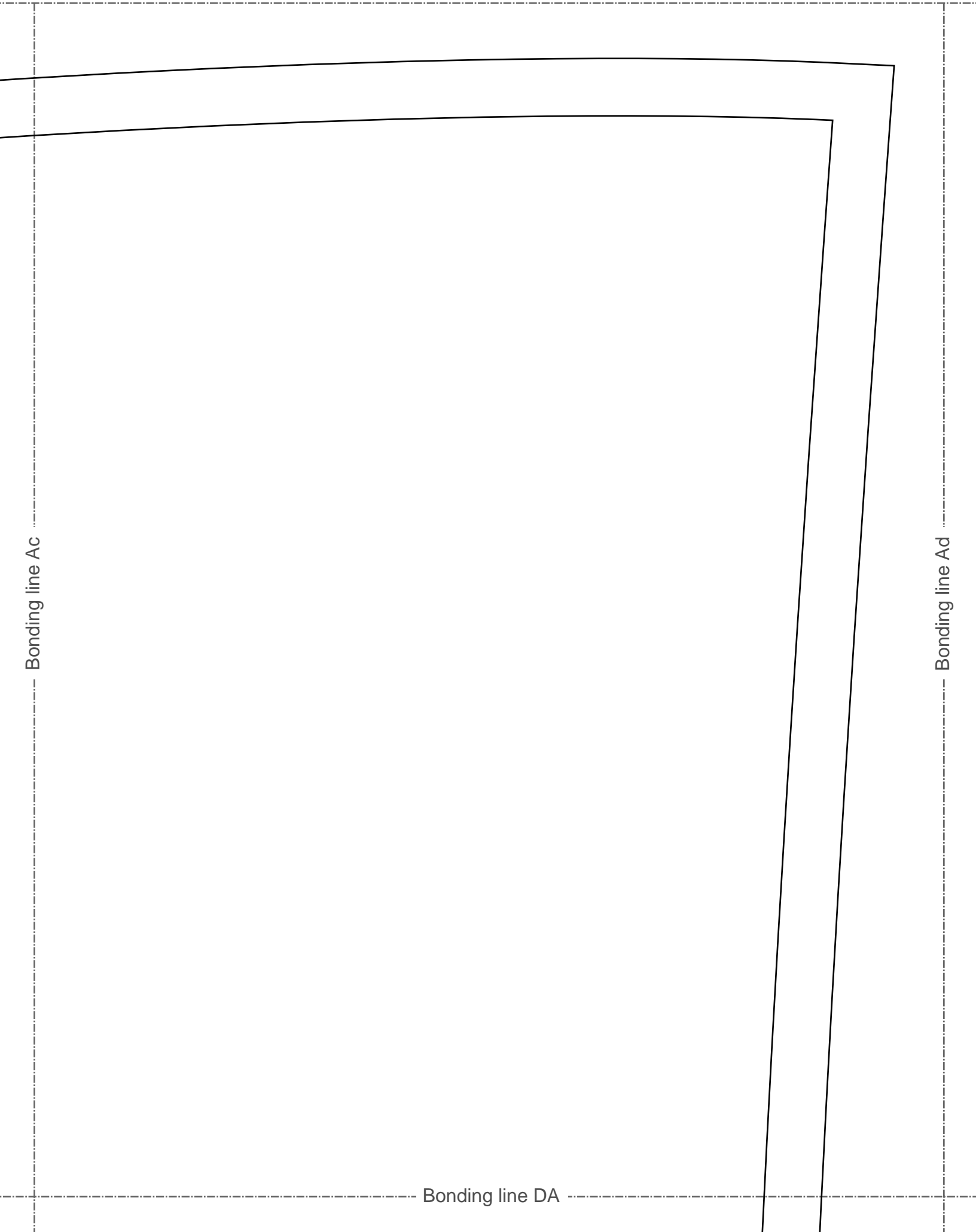
Bonding line CD



Bonding line Ac

Bonding line Ad

Bonding line DA



Bonding line DA

Bonding line Bc

Bonding line Bd

Gauch
From
two

LADII

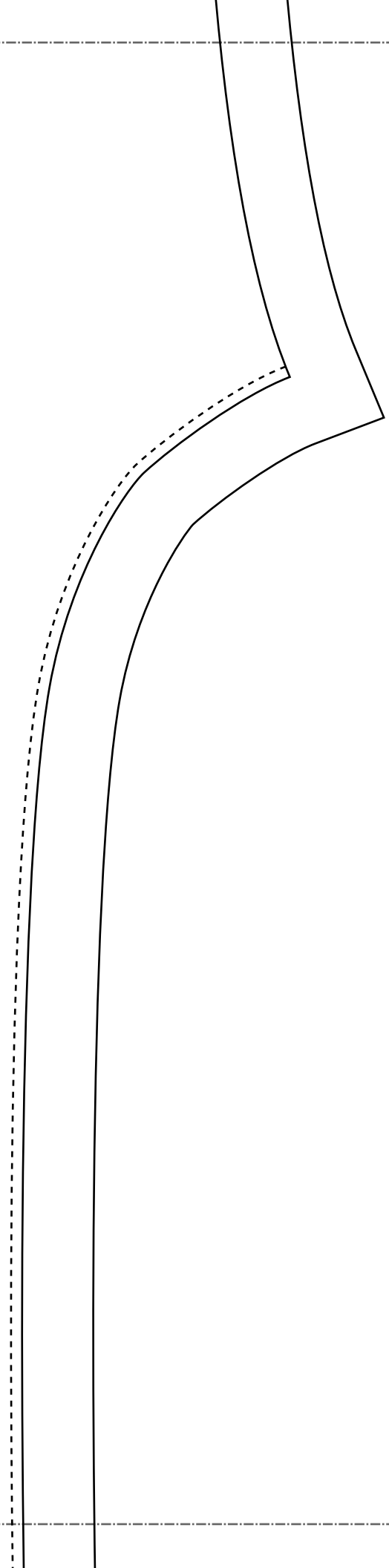
Bonding line DB

Bonding line DB

Bonding line DC

Bonding line Cc

Bonding line Cd



Bonding line DC

Folding line

Folding line

Bonding line Dc

Bonding line Dd

Bonding line DD