

Bonding line AA

The upper side is sandwiched between 1.18

Bias start position

Elastic band through position

Lower side sandwiches 2.76-3.16

Sew a 2.76-3.16 inch wide gathered ruffle to the hem

Bonding line AA

Children's **10** size

Drawers Bias two sh

Bonding line AB

en 1-18-1.5/ Inch wide gathered ruffles on the bias

Bonding_line_Ca

76-3.16 inch wide gathered ruffles on the bias

Seam allowance 1/2in.

Bonding line AB

0 sheets

Seam allowance 1/2in.



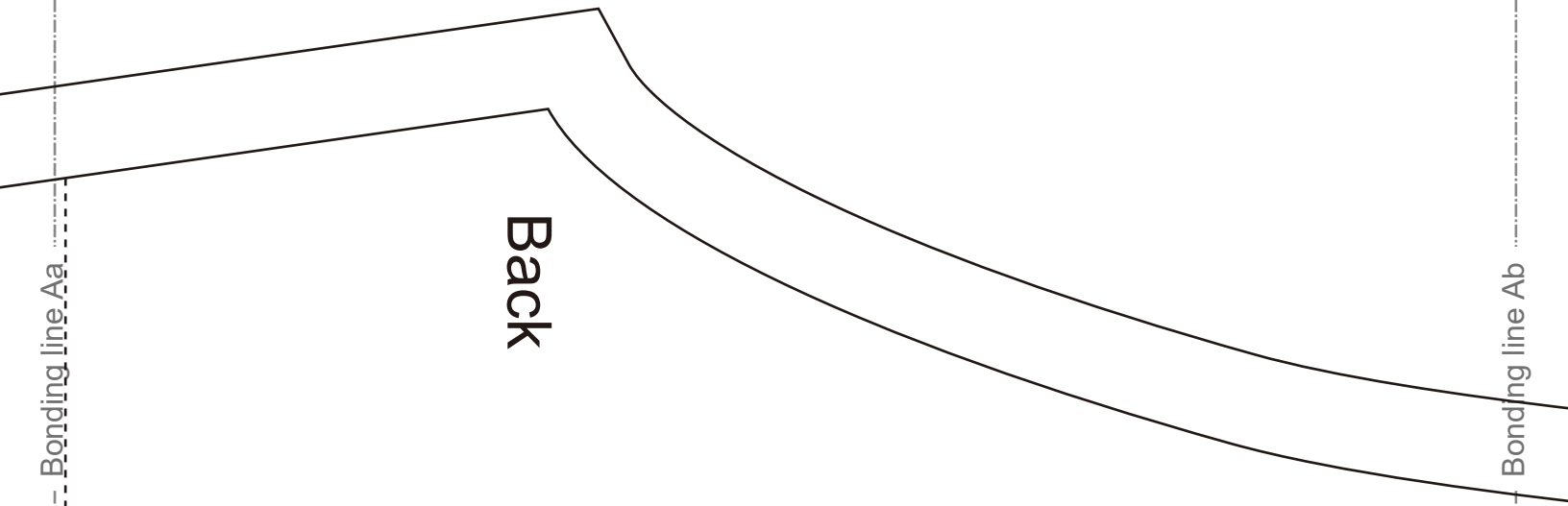
Bonding line AC

Bonding line Aa

Back

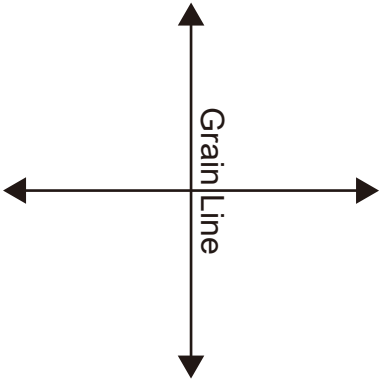
Bonding line Ab

Bonding line BA



Bonding line BA

Drawers
Body
two sheets



Bonding line BB

The upper side is sandwiched between 118-

Bonding line Ba

Discard position

Bonding line BB

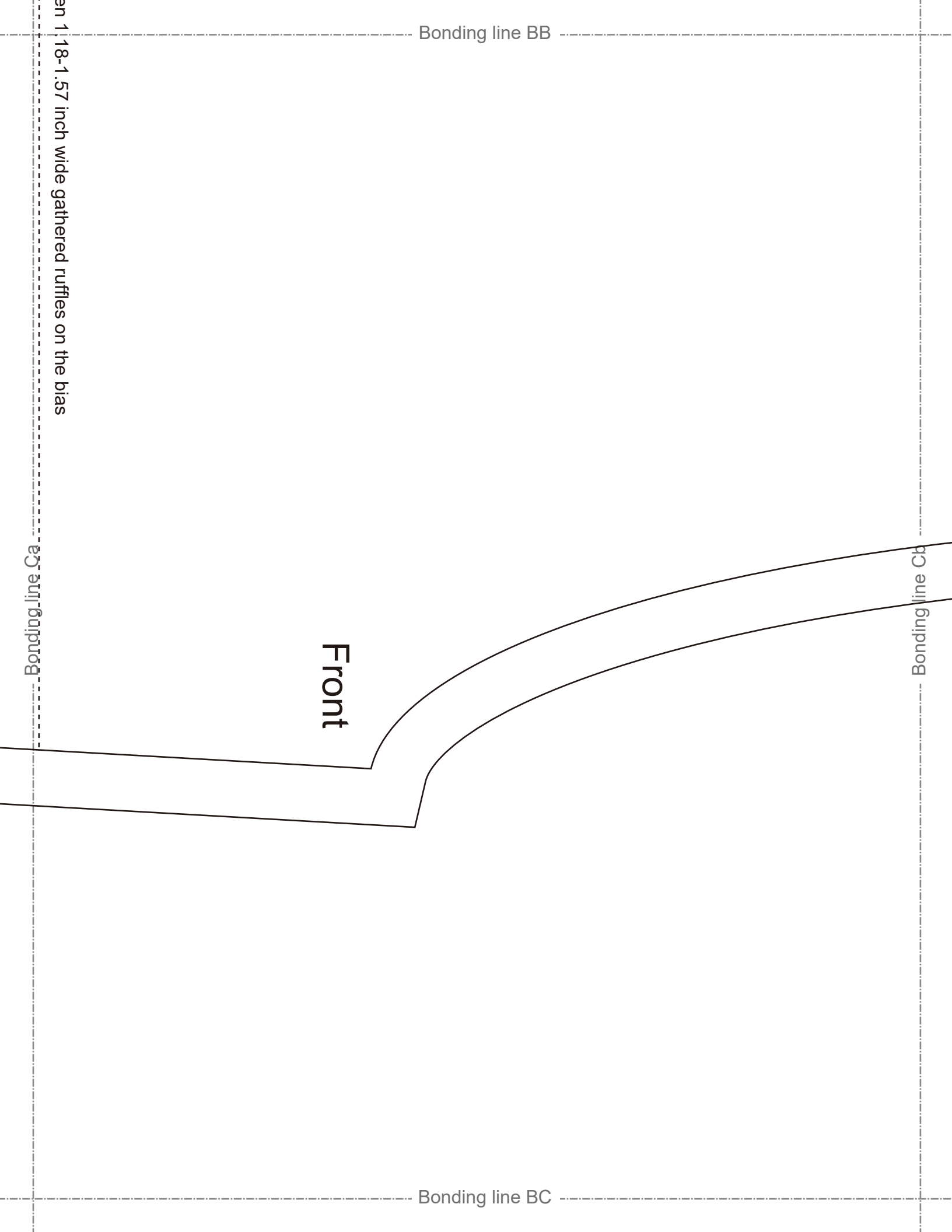
en 1 18-1.57 inch wide gathered ruffles on the bias

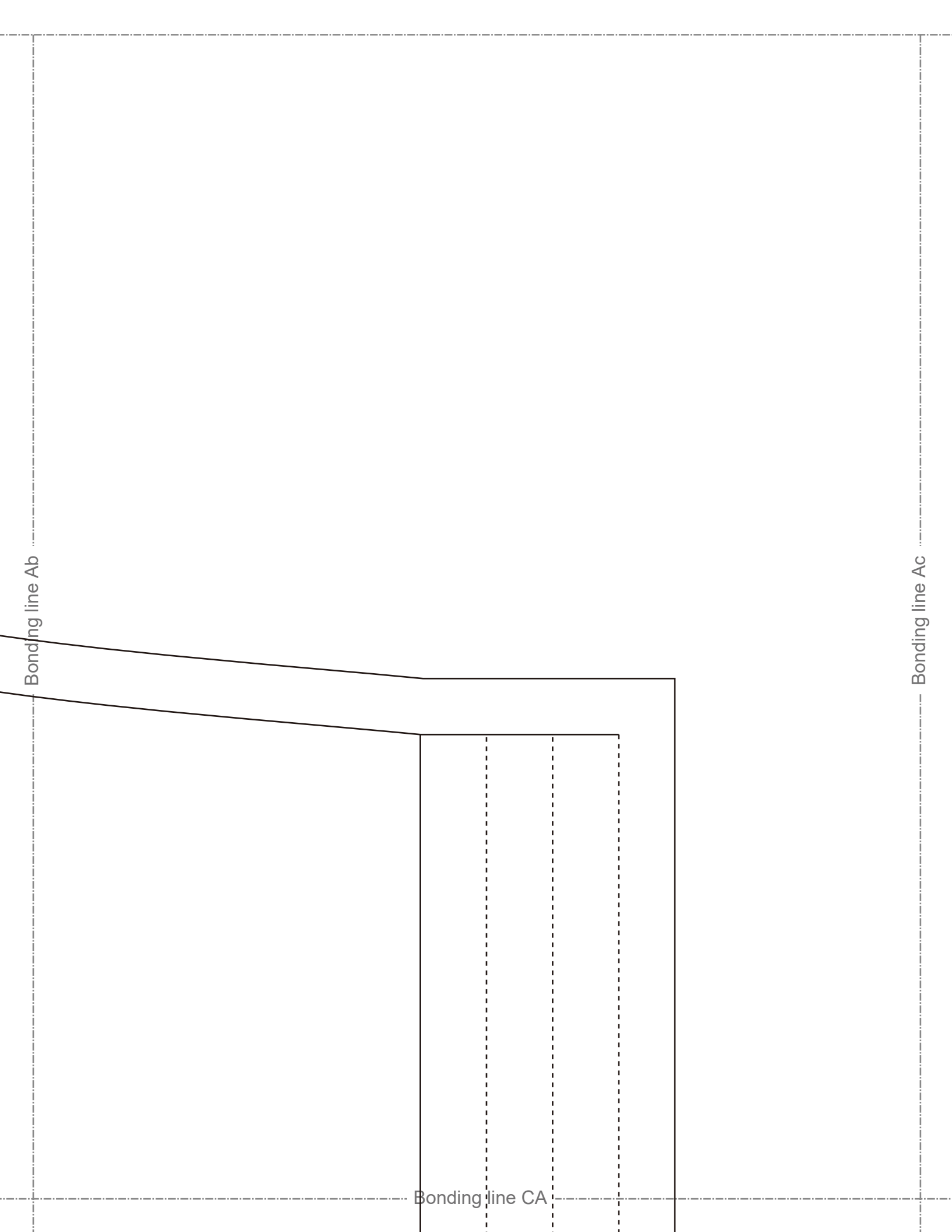
Bonding_line_Ca

Front

Bonding_line_Cb

Bonding line BC





Bonding line CA

Bonding line Bc

Bonding line CB

Sewing line

Sewing line

Sewing line

Creese Line

Children's **10** size

Drawers

Body

Bonding line Cb

Bonding line CB



Bonding line CC

Bonding line Cc