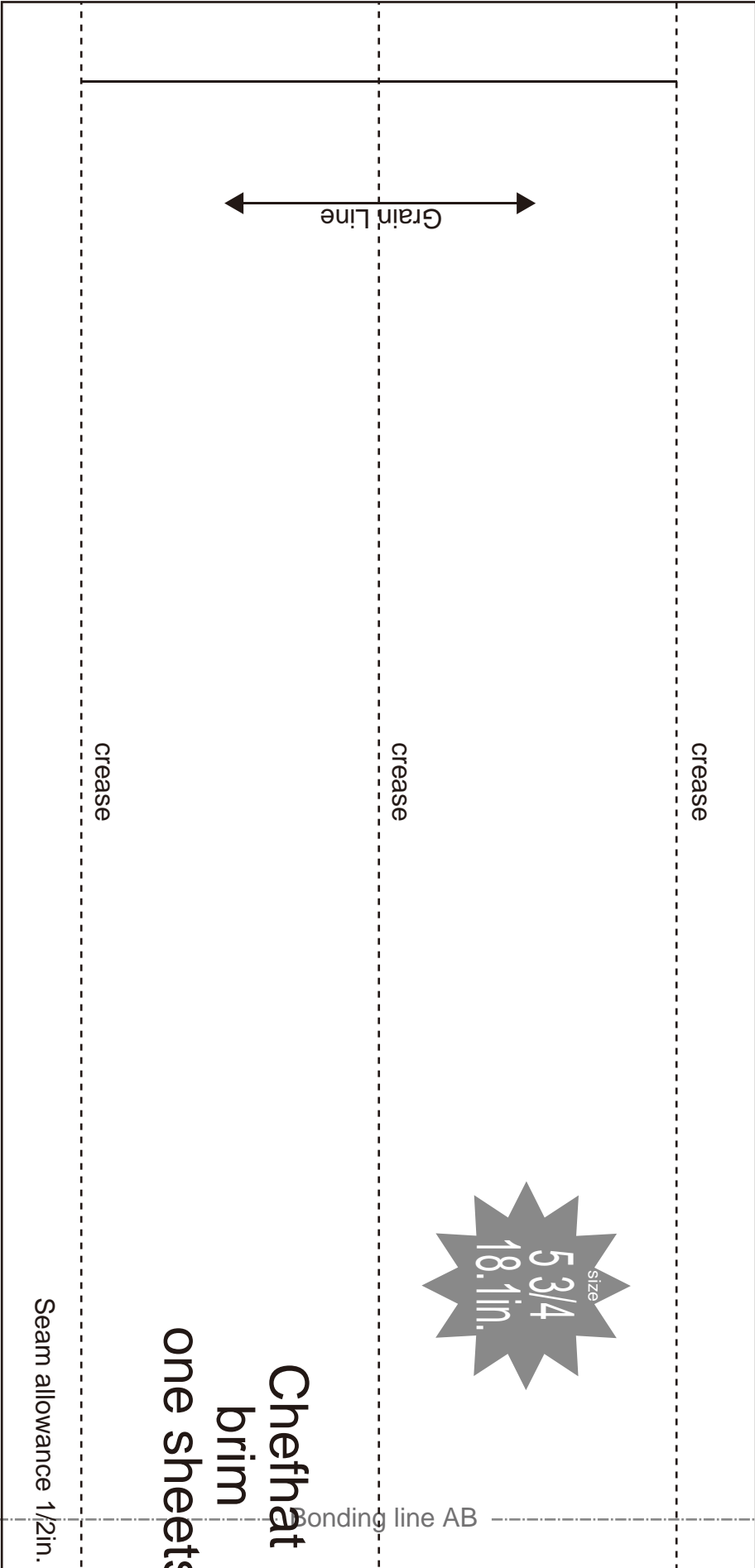


Bonding line AA



crease

crease

crease

**Chefnat
brim
one sheets**

Seam allowance 1/2in.



Bonding line AB

Bonding line Ba



How to make

Sorry if I haven't made myself understood (well) in English. You know I'm poor at English.

1. Sew the "brim" and shape them with an iron
2. fold all folding positions of the "side"
3. Sew the "side" and crush the seam allowance by iron
4. Fold it inward according to the "top" folding line of the "side" and shape it with an iron
5. Fold the "top" fold line with an iron and sew it to the "side"
6. Sew the "side" while sandwiching in the "brim"

se 1/2in.

meets
m
hat

Bonding line AB

Bonding line AC

Bonding line Aa

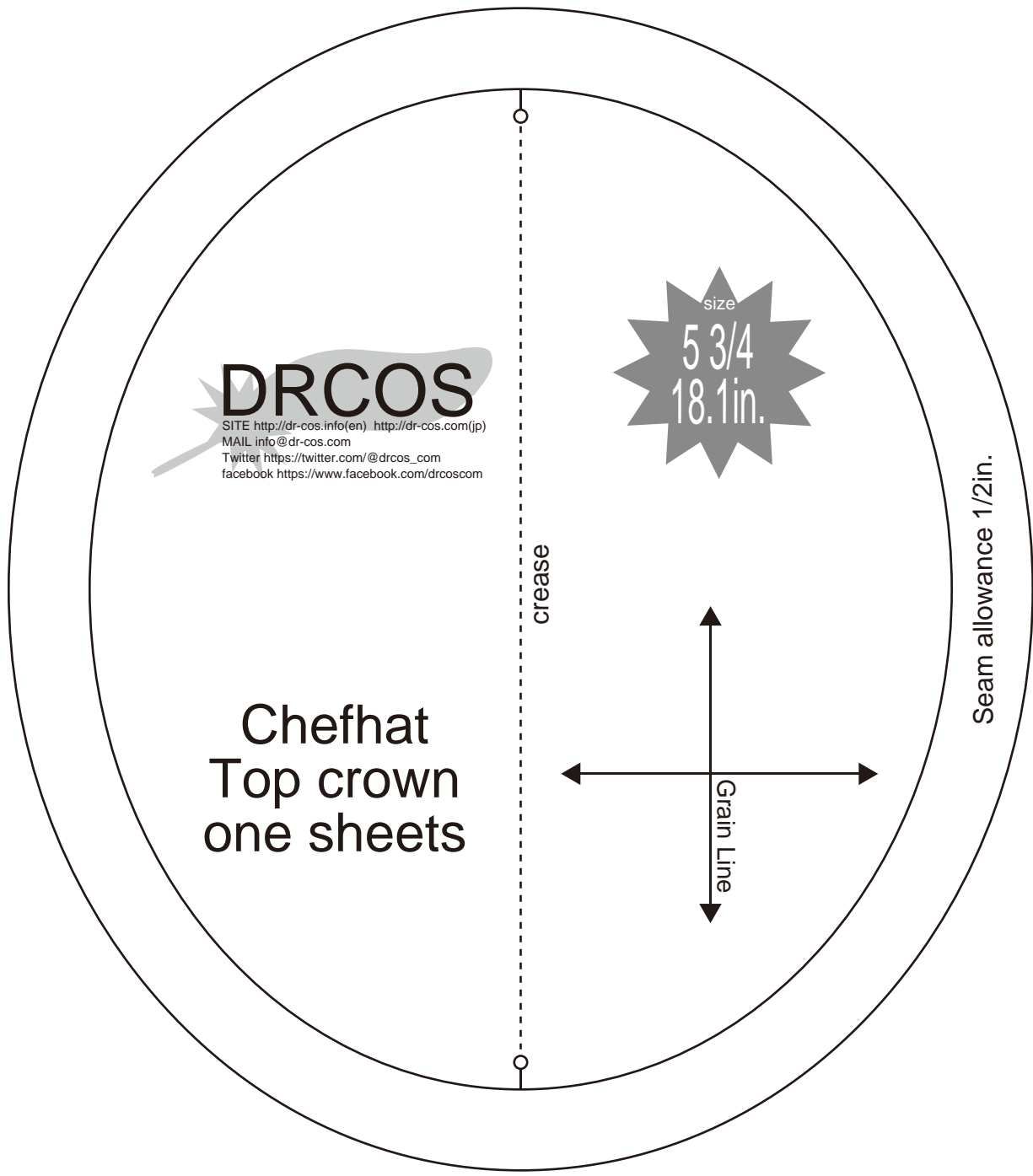
Bonding line Ab

size
5 3/4
18.1in.

Chefhat
side
one sheets

Seam allowance 1/2in.

Bonding line BA



DRCOS

SITE <http://dr-cos.info/en> <http://dr-cos.com/jp>
MAIL info@dr-cos.com
Twitter https://twitter.com/drcos_com
facebook <https://www.facebook.com/drcoscom>

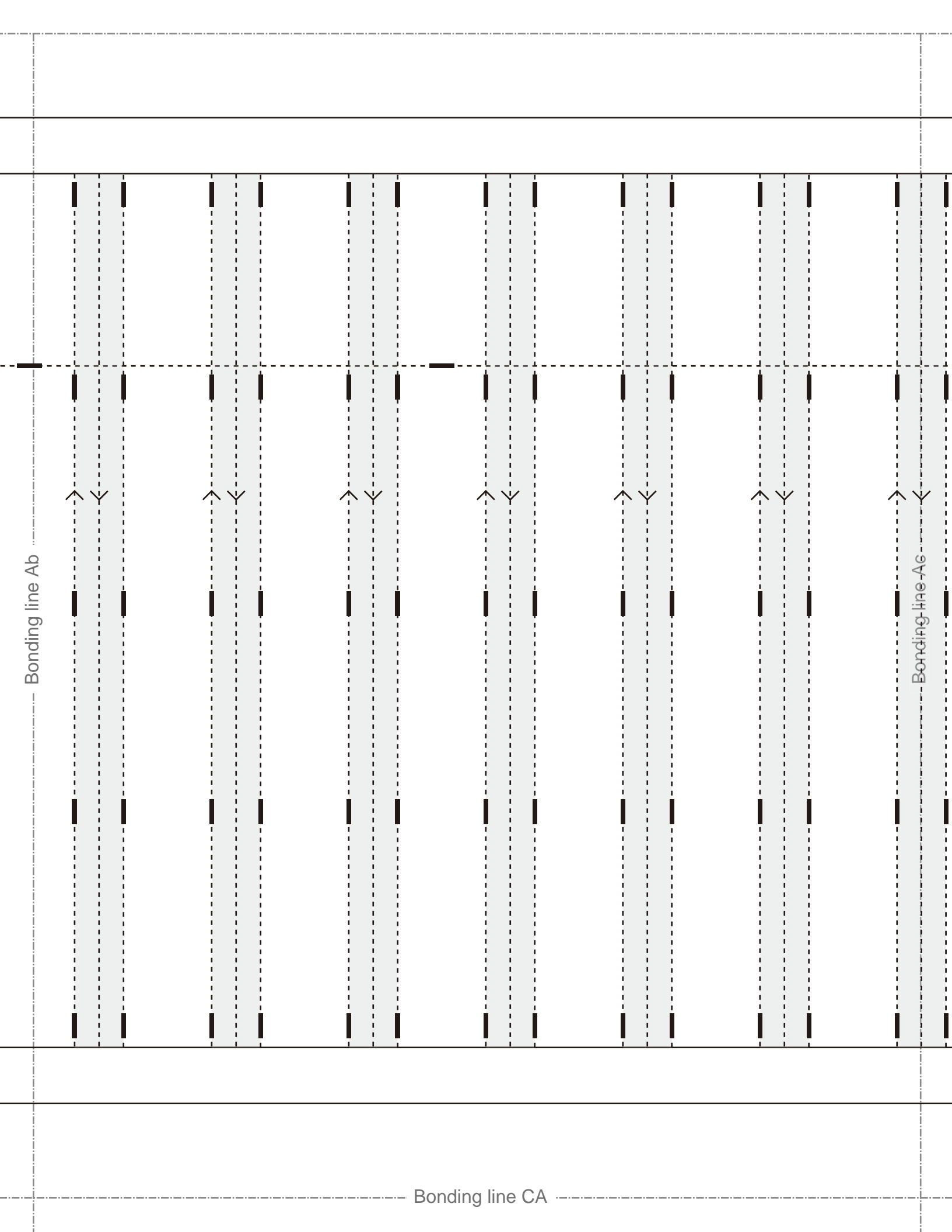
size
5 3/4
18.1in.

crease

**Chefhat
Top crown
one sheets**

Grain Line

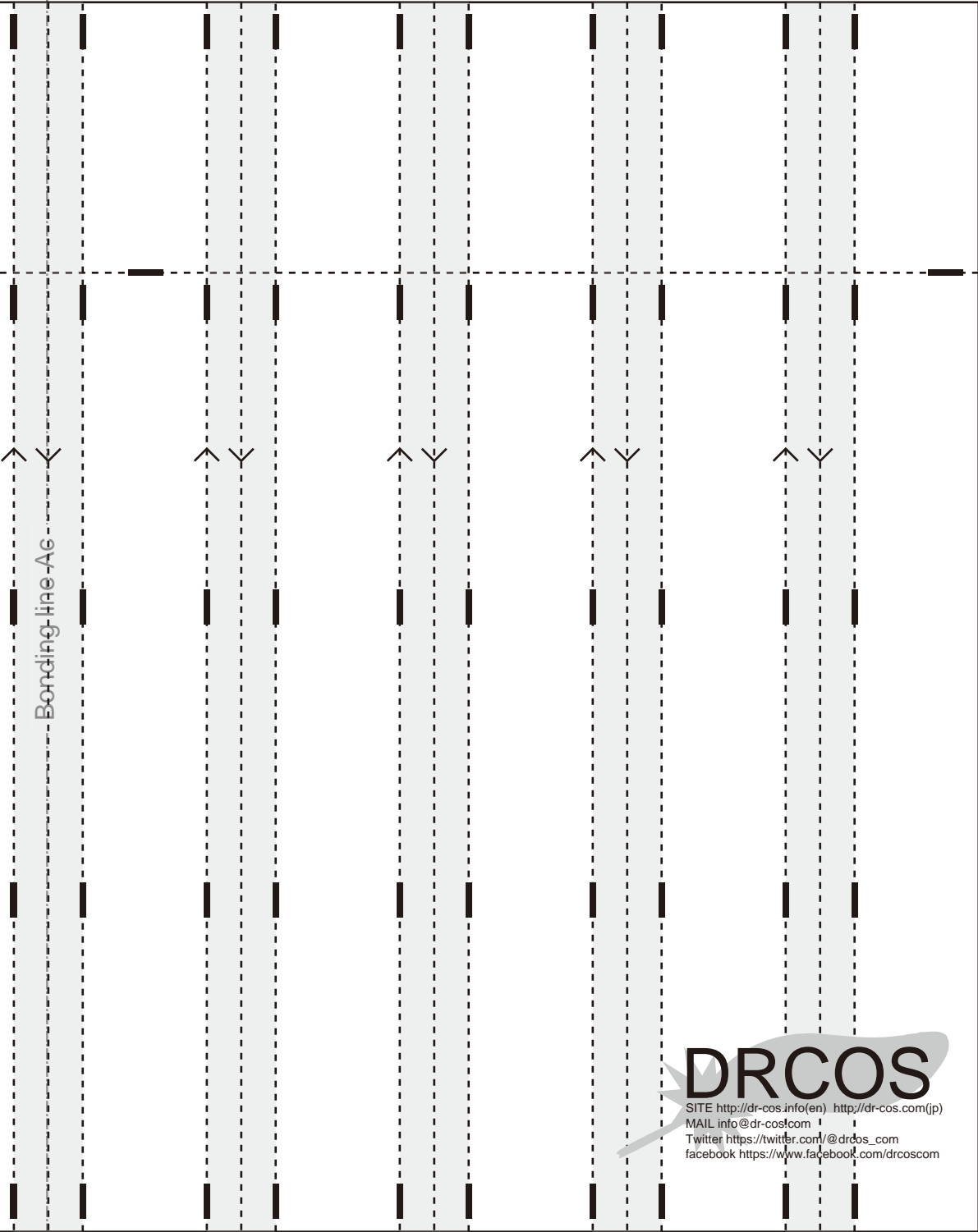
Seam allowance 1/2in.



Bonding line Ab

Bonding line Ab

Bonding line CA



Bonding line Ag

DRCOS

SITE [http://dr-cos.info\(en\)](http://dr-cos.info(en)) [http://dr-cos.com\(jp\)](http://dr-cos.com(jp))
MAIL info@dr-cos.com
Twitter [@drdos_com](https://twitter.com/@drdos_com)
facebook <https://www.facebook.com/drcoscom>

Bonding line Ad

Bonding line DA