

Grain Line

Bonding line AA

Bonding line Aa

Bonding line AA

Seam allowance 1/2in.



Button & Button Hole Position



Facing Line

Bonding line Ba

Bonding line AB



Bonding line AB



Center position

Bonding line Ca

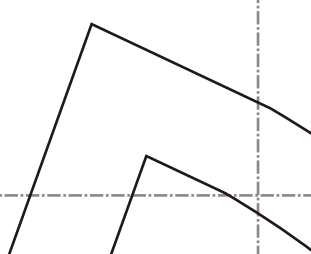
**A-Line Coat**  
**Front body facing**  
**two sheets**  
**Fusible interlining**  
**two sheets**



Collar position



Bonding line AC



# LADIES' size

Bonding line AC

Bonding line AD

A-Line Coat  
Back body facing



Bonding line Da

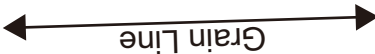


Bonding line AD

**DRCOS** Bonding line Ea  
 SITE <http://dr-cos.info/en> <http://dr-cos.com/tp>  
 MAIL [info@dr-cos.com](mailto:info@dr-cos.com)  
 Twitter [https://twitter.com/dr-cos\\_com](https://twitter.com/dr-cos_com)  
 facebook <https://www.facebook.com/dr-cos.com>



**A-Line Coat  
 Pocket  
 two sheets**



Seam allowance 1/2in.

Bonding line AE

Seam allowance 1/2in.

**DRCOS**  
SITE <http://drcos.info/en> <http://drcos.com/jp>  
MAIL [info@drcos.com](mailto:info@drcos.com)  
Twitter [https://twitter.com/drcos\\_com](https://twitter.com/drcos_com)  
Facebook <https://www.facebook.com/drcoscom>

Bonding line Aa

Bonding line Ab

Bonding line BA

Pocket position

Bonding line BA

tion



A-Line Coat  
Front body  
two sheets



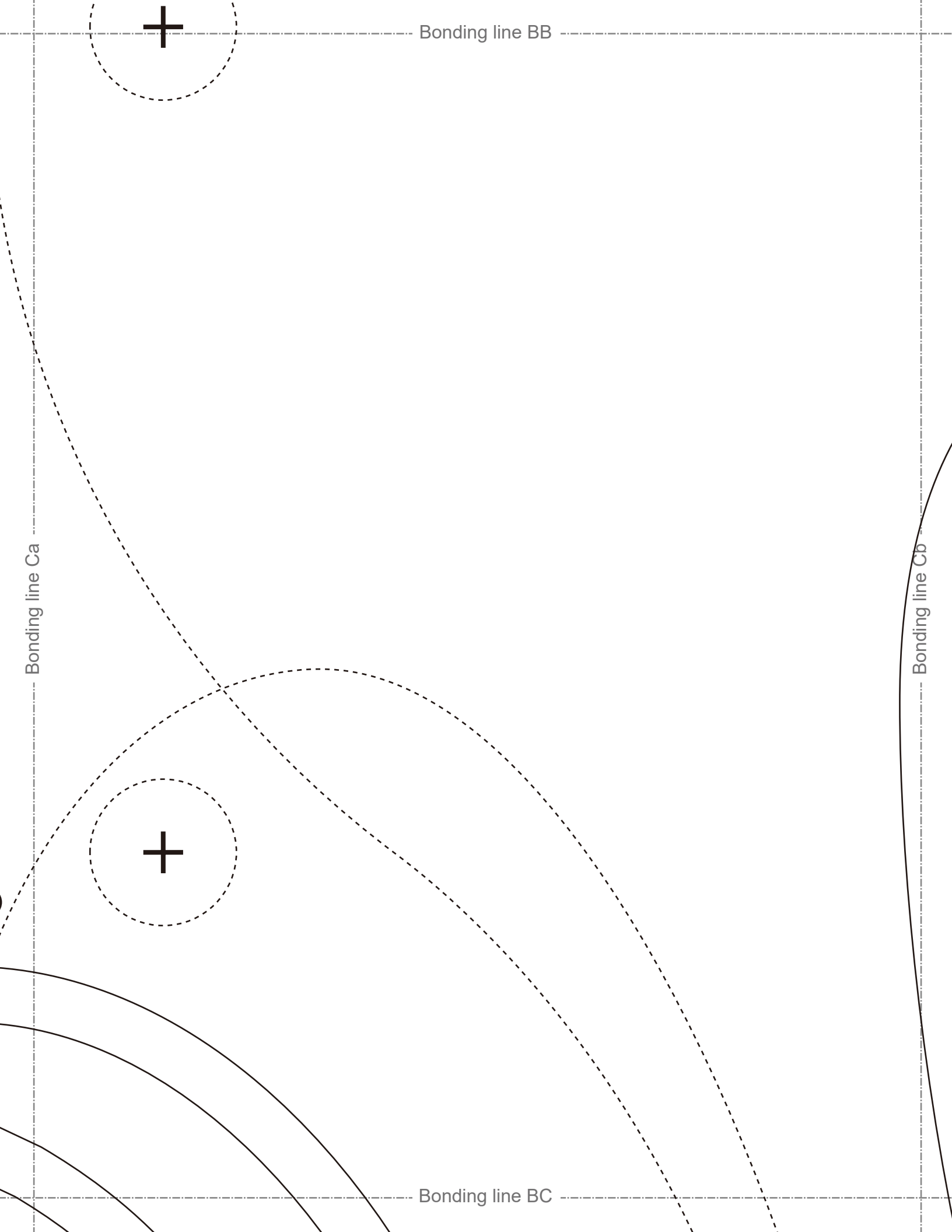
Bonding line BB

Bonding line Ba

Bonding line Bb

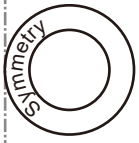
Baste

Button &





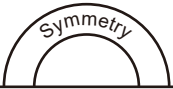
A-Line Coat  
Back body facing  
one sheets  
Fusible interlining  
one sheets



Seam allowance 1/2in.

Bonding line Da

Grain Line



Bonding line BC

A-Line Coat  
sleeve belt(A)  
two sheets



**DRCOS**

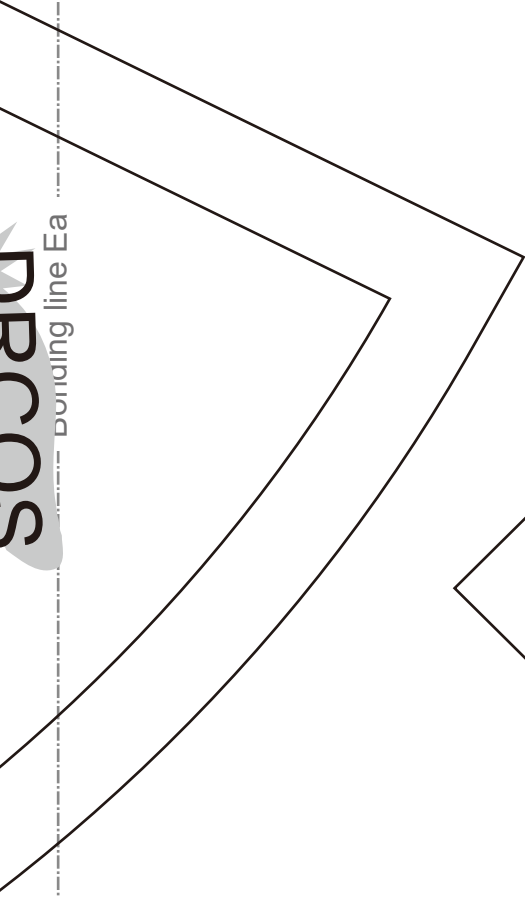
SITE <http://dr-cos.info/en> <http://dr-cos.com/jp>  
MAIL [info@dr-cos.com](mailto:info@dr-cos.com)  
Twitter [https://twitter.com/dracos\\_com](https://twitter.com/dracos_com)  
facebook <https://www.facebook.com/dracoscom>

Bonding line BD

Bonding line Dk

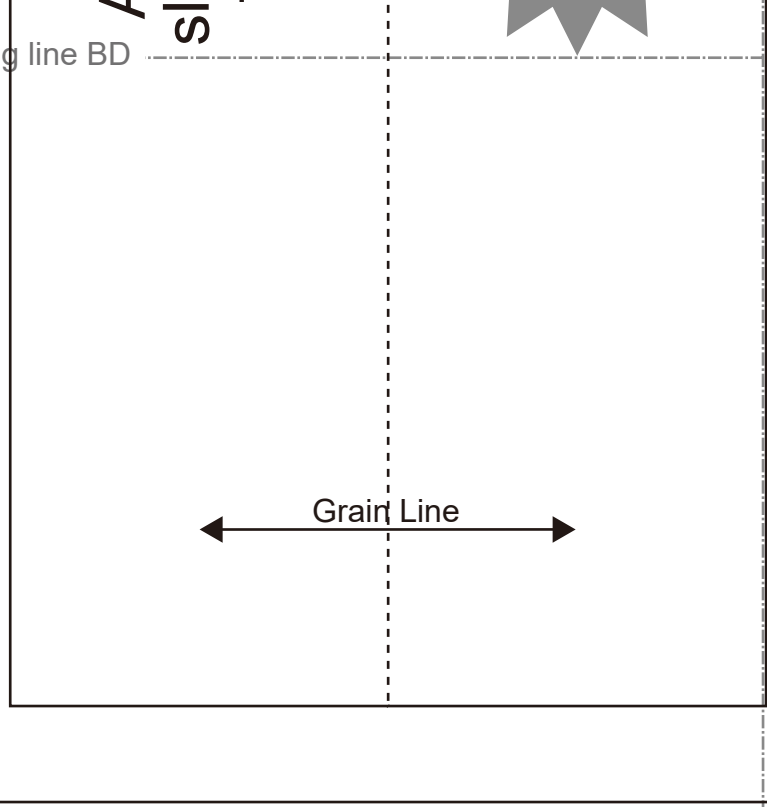
Seam allowance 1/2in

**DRCCOS**  
Bonding line Ea



**DRCCOS**  
SITE: <http://drccos.org/> | [info@drccos.com](mailto:info@drccos.com)  
T.M.I.L. <http://drccos.com/>  
Feedback: <https://www.facebook.com/drccos/>  
microscop

Bonding line BD



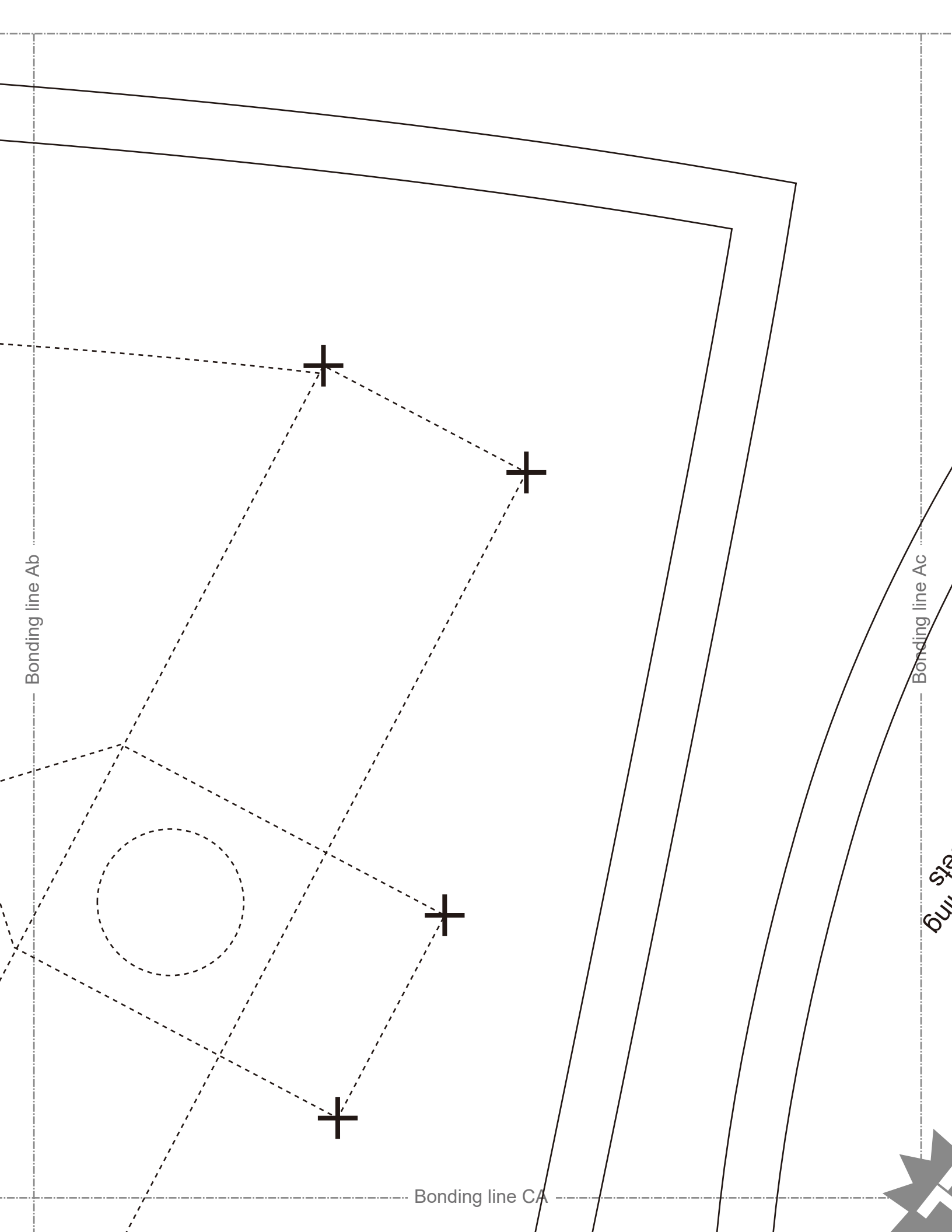
Seam allowance 1/2in.



A-Line Coat  
pocket band  
two sheets

Bonding line BE

Bonding line Eb



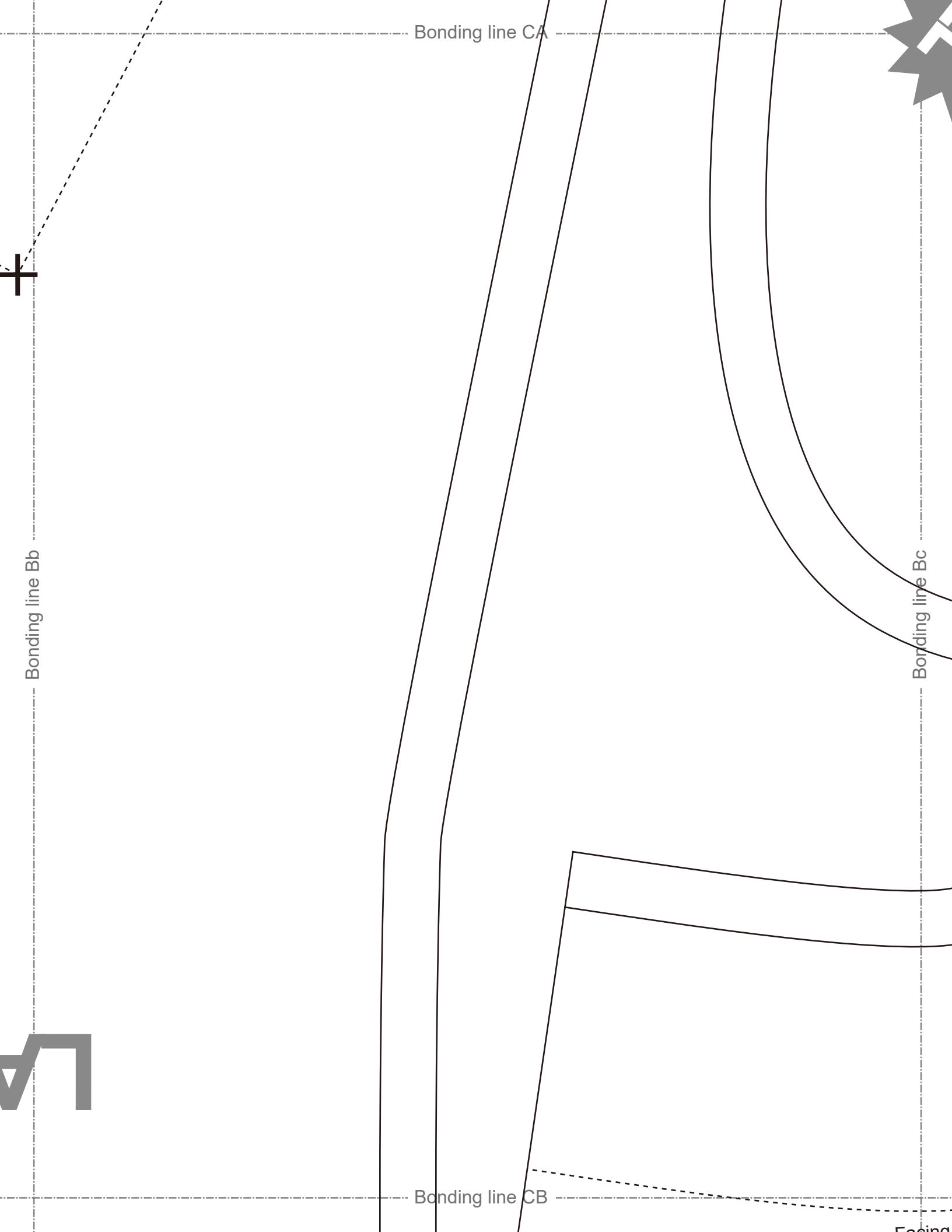
Bonding line Ab

Bonding line Ac

Bonding line CA

6ur  
SFS





Bonding line CB

Facing

Bonding line Cb

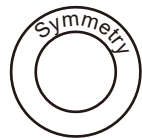
Bonding line Cc

Bonding line CC

**LADII**

# LADII

Bonding line CC



A-Line  
Back  
two s



Bonding line Dc

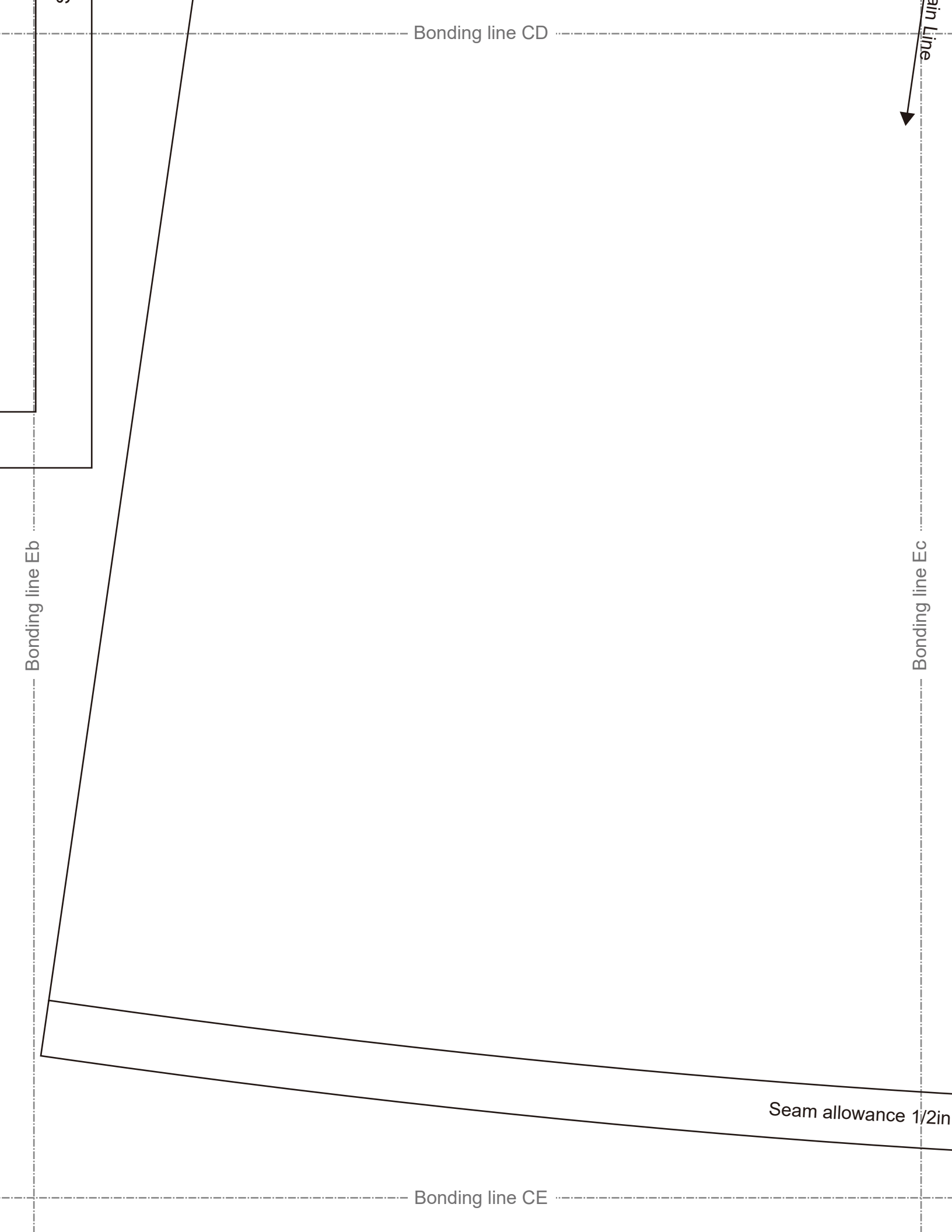
Grain Line

Bonding line CD

Seam allowance 1/2in.

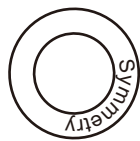
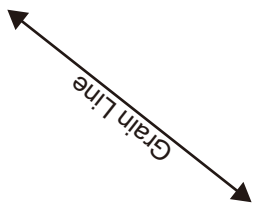
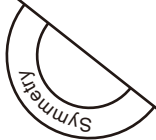
Bonding line Dd

Twitter: [https://twitter.com/@nicolas\\_cott](https://twitter.com/@nicolas_cott)  
facebook: <https://www.facebook.com/drooscom>



Bonding line Ac

Bonding line Ad

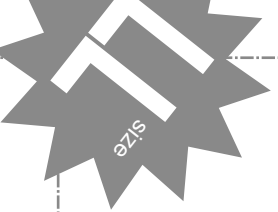


A-Line Coat  
Collar  
two sheets  
Fusible interfacing  
one sheet

Bonding line DA







Bonding line DA

Bonding line Bc

**DRCOS**  
 SITE [http://dr-cos.info\(en\)](http://dr-cos.info(en)) <http://dr-cos.com/fr/>  
 MAIL [info@dr-cos.com](mailto:info@dr-cos.com)  
 Twitter <https://twitter.com/dr-cos>  
 Facebook <https://www.facebook.com/dr-cos>

Bonding line Bd

**DRCOS**  
 SITE [http://dr-cos.info\(en\)](http://dr-cos.info(en)) <http://dr-cos.com/fr/>  
 MAIL [info@dr-cos.com](mailto:info@dr-cos.com)  
 Twitter <https://twitter.com/dr-cos>

Facing Line

# DRCOS

SITE [http://dr-cos.info\(en\)](http://dr-cos.info(en)) [http://dr-cos.com\(jp\)](http://dr-cos.com(jp))  
MAIL [info@dr-cos.com](mailto:info@dr-cos.com)  
Twitter [https://twitter.com/@drcos\\_com](https://twitter.com/@drcos_com)  
facebook <https://www.facebook.com/drcoscom>

Facing Line

Bonding line Cc

Bonding line Cd

Bonding line DC

DIES'  size

**DIES'LL** size

A-Line Coat  
Back body  
no sheets

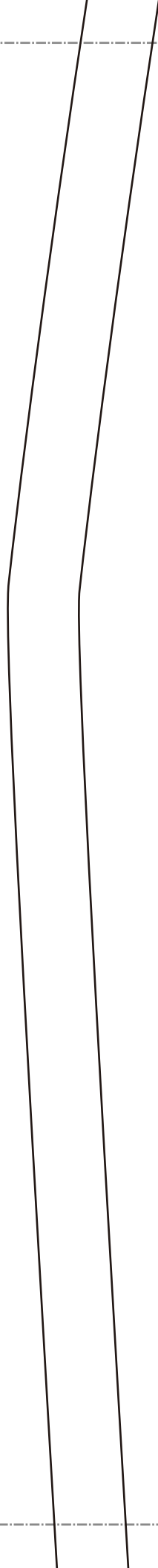
Bonding line DC

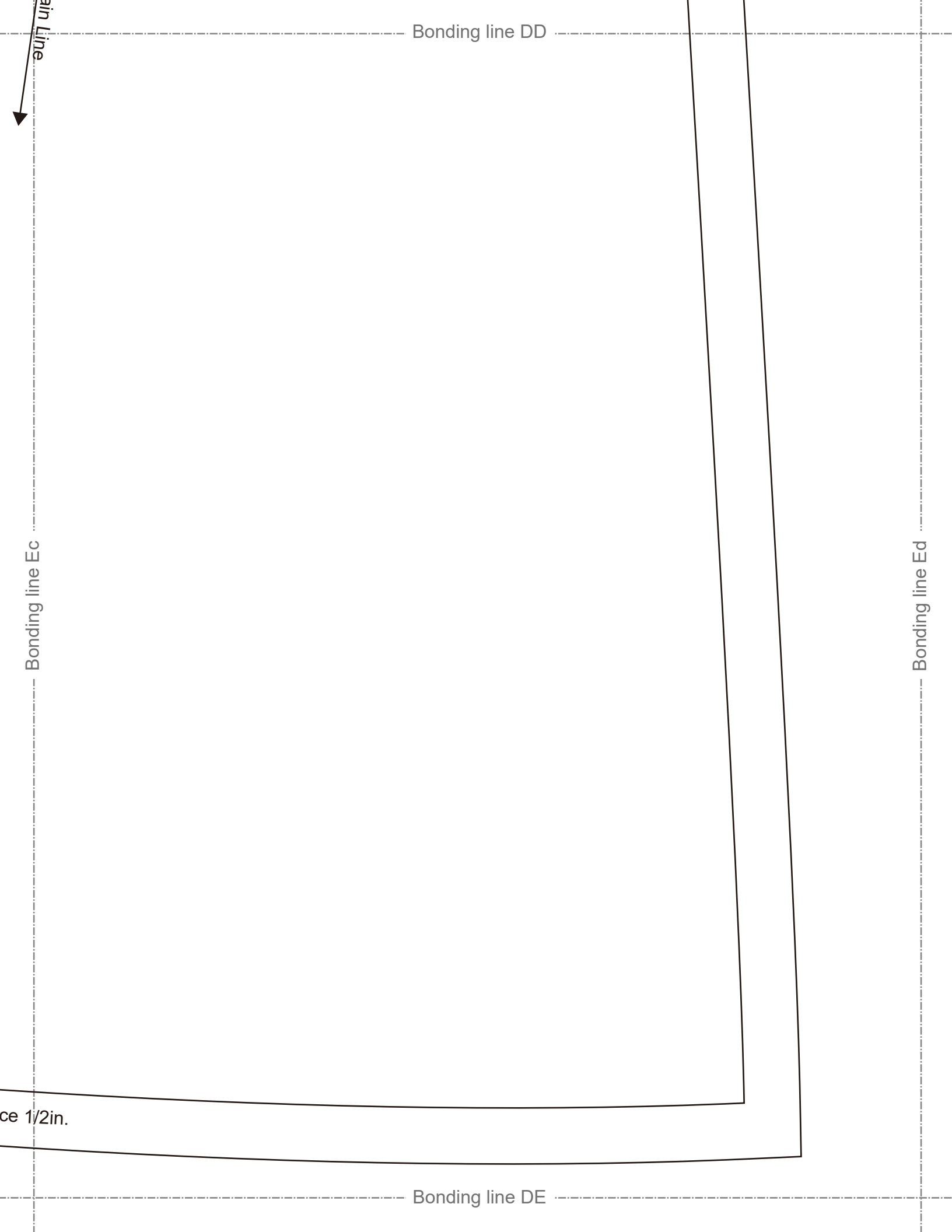
Bonding line Dc

Bonding line Dd

Grain Line

Bonding line DD





**DRCOS**

SITE [http://dr-cos.info\(en\)](http://dr-cos.info(en)) [http://dr-cos.com\(jp\)](http://dr-cos.com(jp))  
MAIL [info@dr-cos.com](mailto:info@dr-cos.com)  
Twitter [https://twitter.com/drcos\\_com](https://twitter.com/drcos_com)  
facebook <https://www.facebook.com/drcoscom>

Bonding line Ad

Bonding line Ae

**LADIES'** 

Bonding line EA

**A-Line Coat**

Bonding line EA

# A-Line Coat Sleeve two sheets

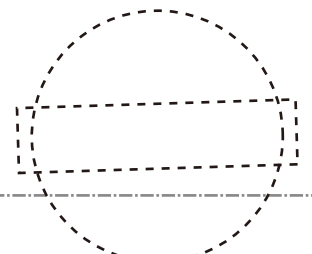
Bonding line Bd

Bonding line Be



Sleeve belt position

Bonding line EB



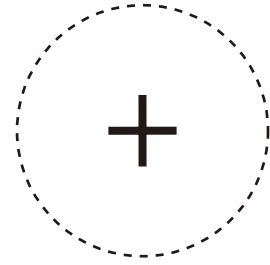
Bonding line EB



Seam allowance 1/2in.

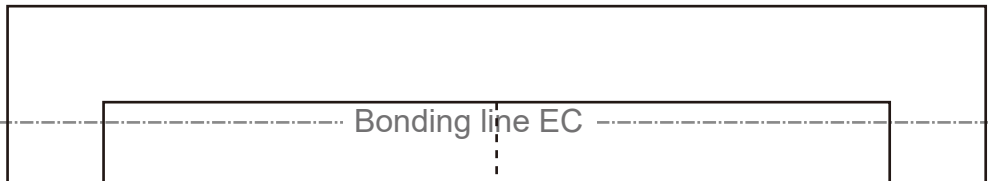
Bonding line Cd

Bonding line Ce



**DRCOS**  
SITE [http://dr-cos.info\(en\)](http://dr-cos.info(en)) [http://dr-cos.com\(jp\)](http://dr-cos.com(jp))  
MAIL [info@dr-cos.com](mailto:info@dr-cos.com)  
Twitter [@drcos\\_com](https://twitter.com/@drcos_com)  
facebook <https://www.facebook.com/drcoscom>

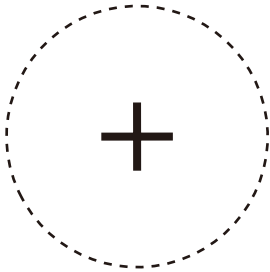
Bonding line EC



Bonding line EC

Grain Line

A-Line Coat  
Pocket parts  
two sheets

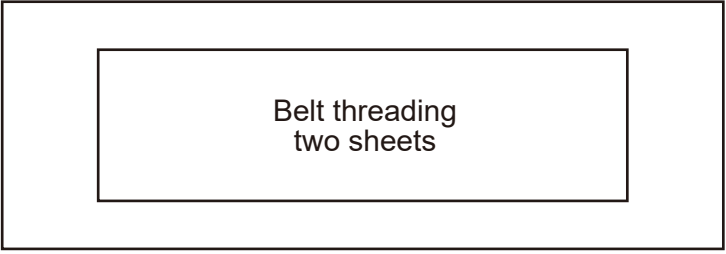


Seam allowance 1/2in.

**DRCOS**  
SITE <http://dr-cos.info/en/> <http://dr-cos.com/fp>  
MAIL [info@dr-cos.com](mailto:info@dr-cos.com)  
Twitter [https://twitter.com/@drcos\\_com](https://twitter.com/@drcos_com)  
facebook <https://www.facebook.com/drcoscom>

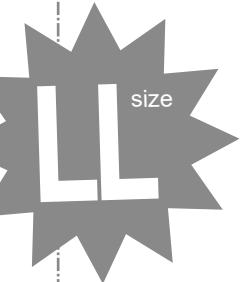
Bonding line ED





Bonding line Ae

Bonding line Af



Bonding line FA

Bonding line FA

Bonding line Be



Bonding line Bf

Belt threading position

Bonding line B



Bonding line B

Belt three



1/2in.

# A-Line Coat sleeve belt(B) two sheets

Bonding line Ce

Bonding line Cf



Seam allowance 1/2in.

Bonding line FC