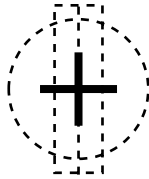


[Home](#)

[Back to Jacketshortcoat page](#)

Grain Line

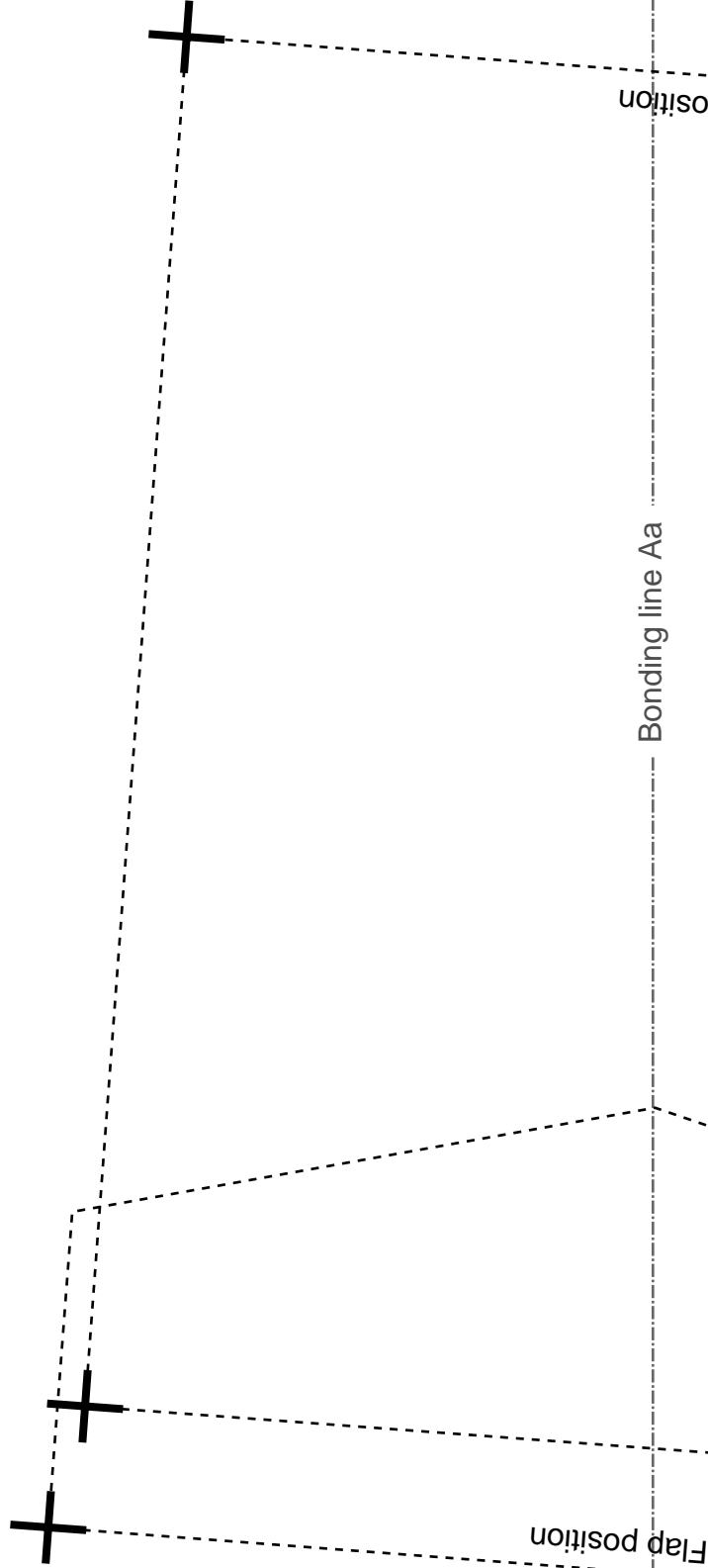


Bonding line AA

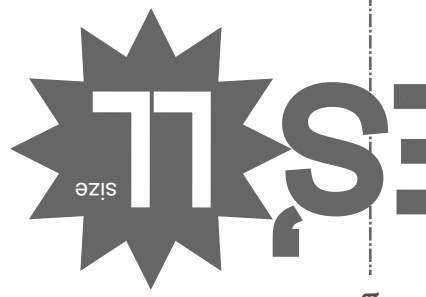
Bonding line Aa

Position

Flap position



Primer coat  
body  
sets



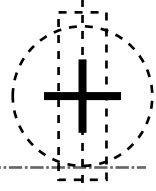
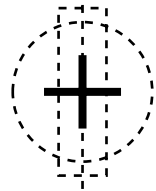
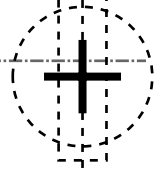
Bonding line Ba

Pocket position

Flap position

Bonding line AA

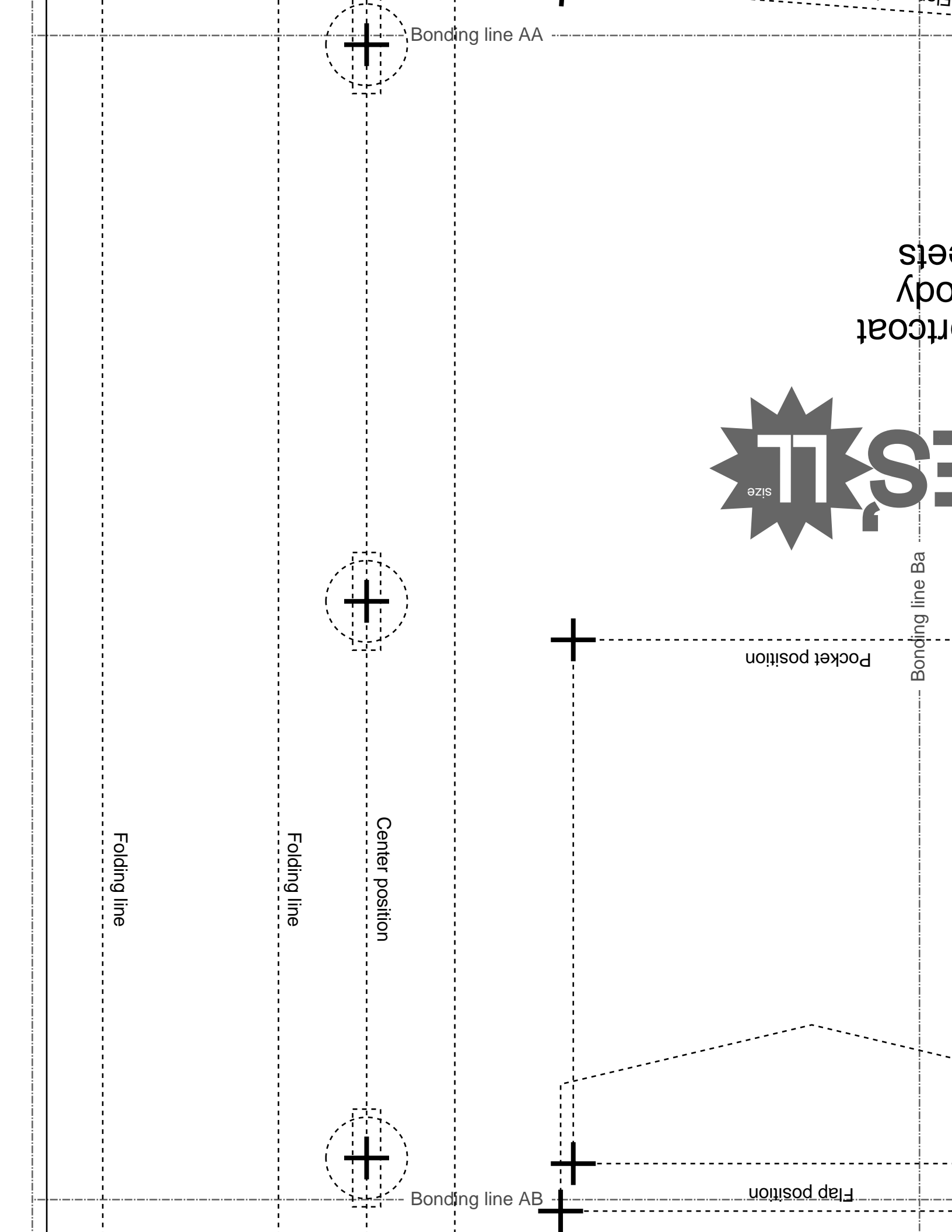
Bonding line AB

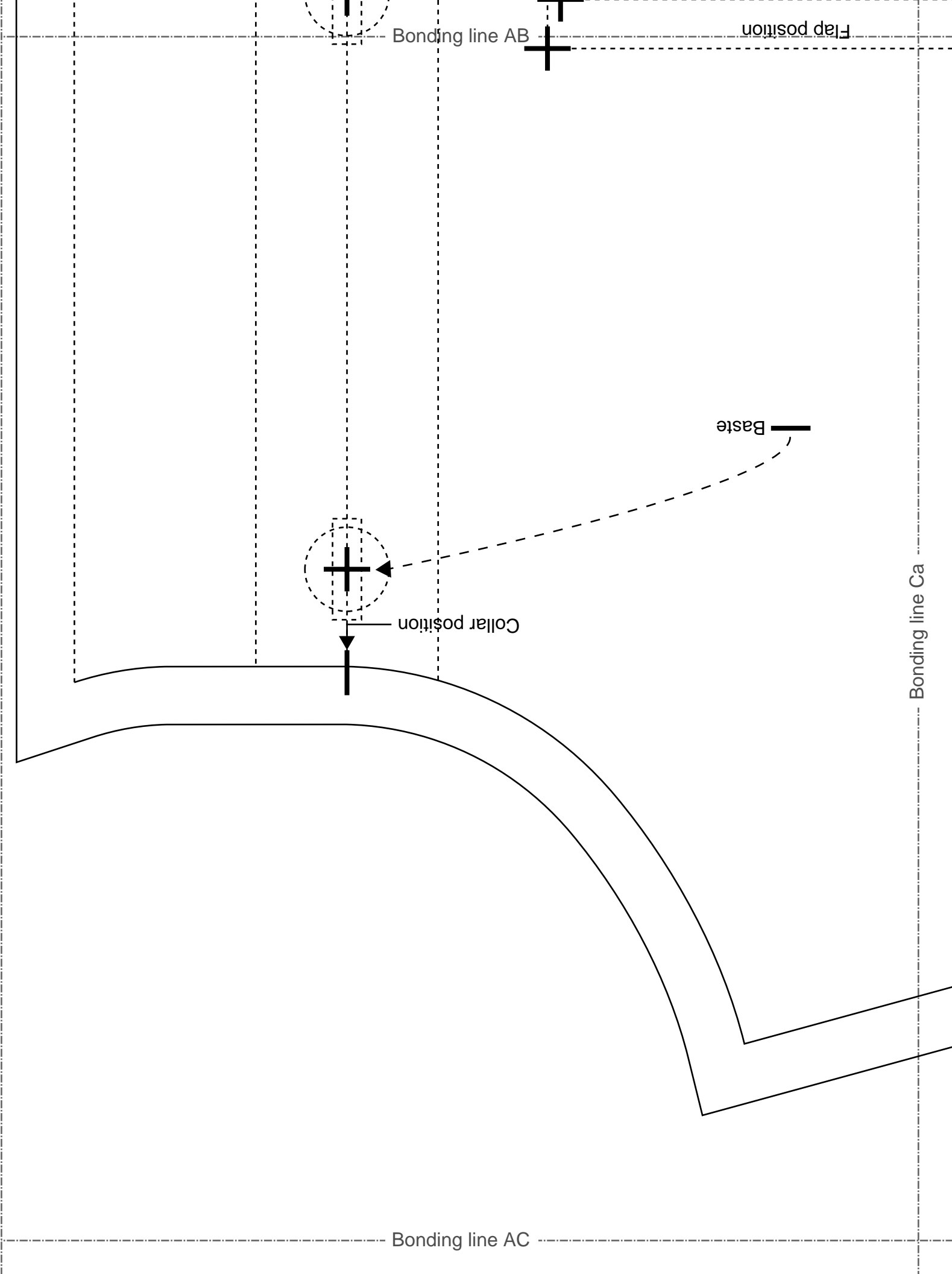


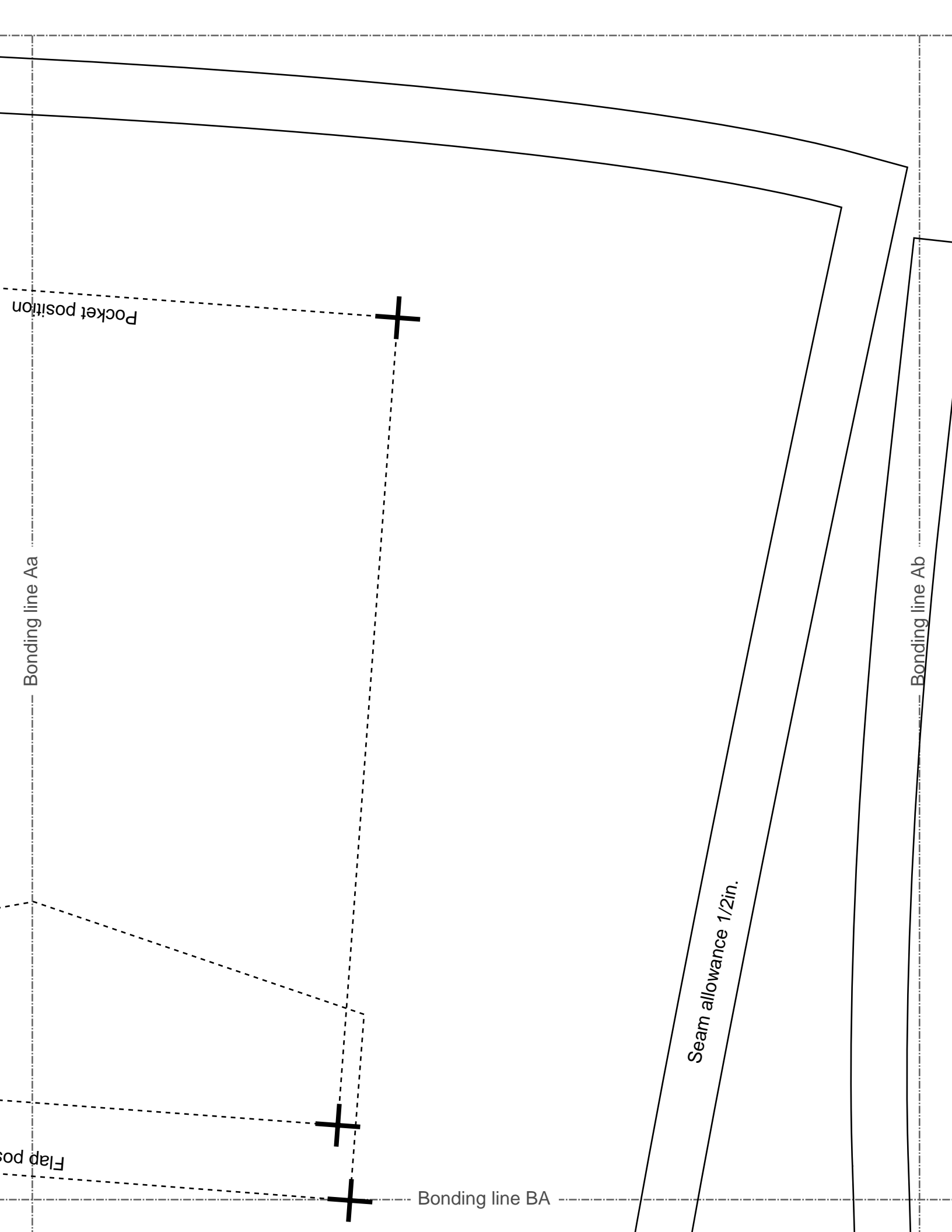
Center position

Folding line

Folding line







Pocket position

Flap position

Bonding line Aa

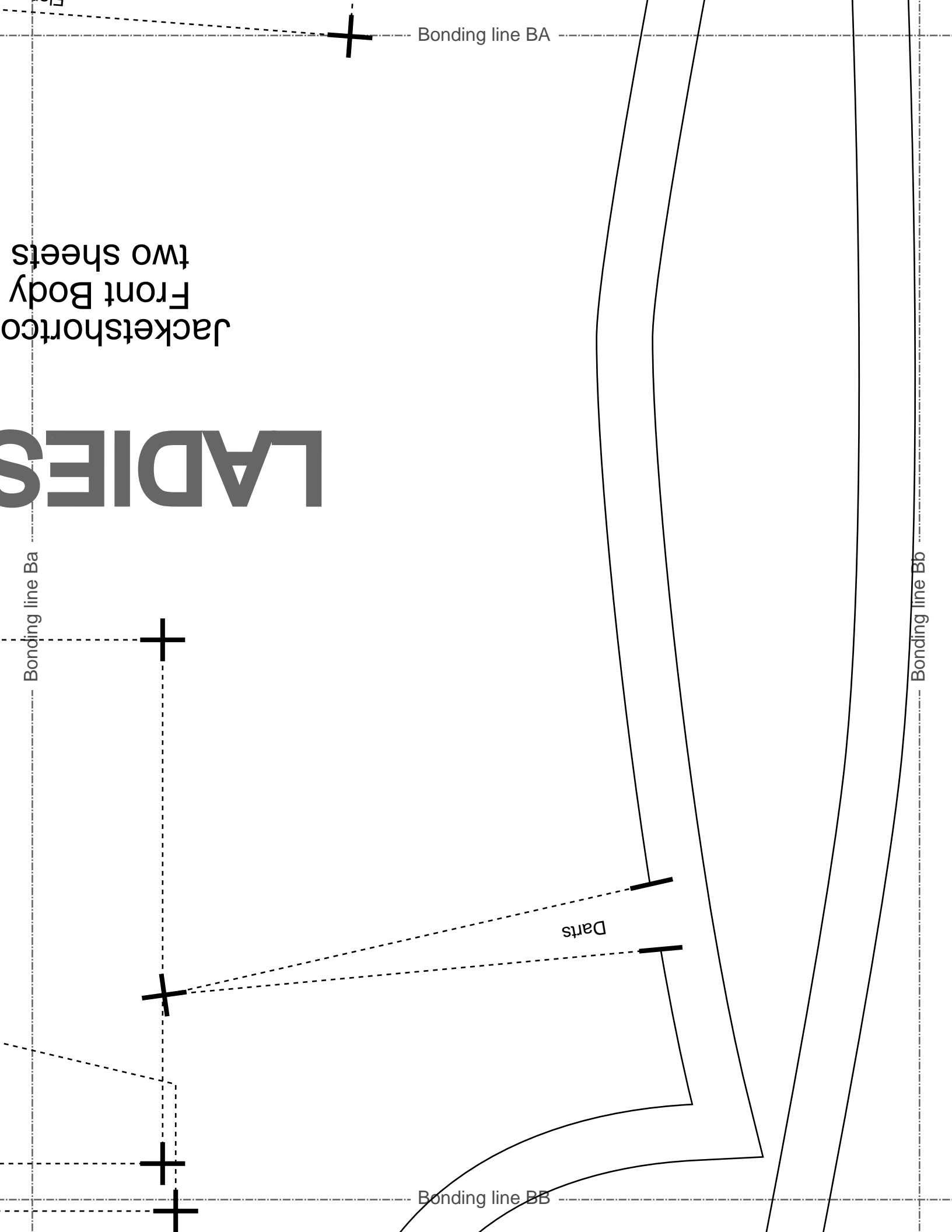
Bonding line BA

Seam allowance 1/2in.

Bonding line Ab

# LADIES

Jacketshortco  
Front Body  
two sheets



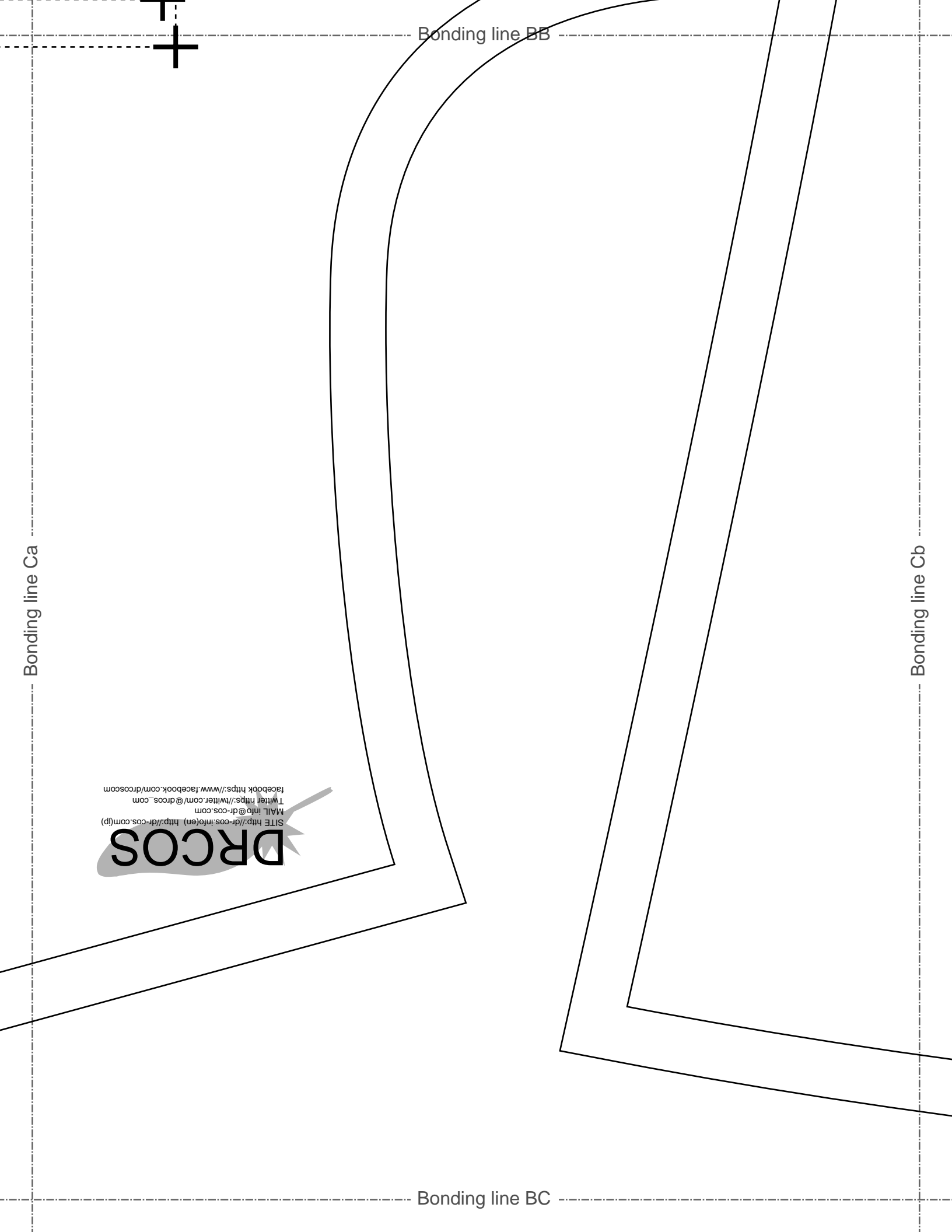
Bonding line Ca

Bonding line BB

Bonding line Cb

Bonding line BC

**DRCOS**  
 SITE <http://dr-cos.info/en> <http://dr-cos.com/jp>  
 MAIL [info@dr-cos.com](mailto:info@dr-cos.com)  
 TWITTER [https://twitter.com/dr-cos\\_com](https://twitter.com/dr-cos_com)  
 FACEBOOK <https://www.facebook.com/drcoscom>



Bonding line Ab

Bonding line Ac

Bonding line CA

**DRCOS**

SITE [http://dr-cos.info\(en\)](http://dr-cos.info(en)) [http://dr-cos.com\(jp\)](http://dr-cos.com(jp))

MAIL [info@dr-cos.com](mailto:info@dr-cos.com)

Twitter [@drcos\\_com](https://twitter.com/@drcos_com)

facebook <https://www.facebook.com/drcoscom>

# LADIES' size

Jacketshortcoat  
Back Body  
two sheets



Bonding line CB

Bonding line Cb

Bonding line Cc

Bonding line CC



S

com.jp

scom

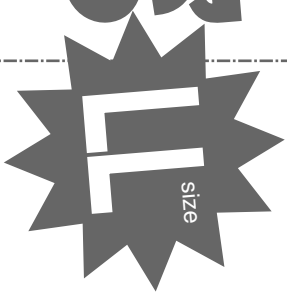
Bonding line Ac

Grain Line

LADIES' ST

Bonding line DA

Bonding line Ad



Jacketshortcoat  
 Collar  
 two sheets  
 Fusible interlining  
 one sheets

Seam allowance 1/2in.

Bonding line DA

Bonding line Bc

Bonding line Bd



Bonding line DA

Bonding line Cc

Seam allowance 1/2in.

Bonding line DC

Bonding line DC

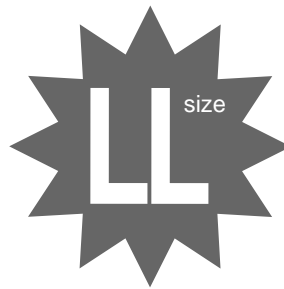
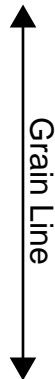
**DRCOS** Inc  
SITE <http://drcos.info/en> <http://drcos.com/pp>  
MAIL [info@drcos.com](mailto:info@drcos.com)  
Twitter <https://twitter.com/@drcos>

Bonding line Ad

Bonding line Ae

**DRCOS**

SITE [http://dr-cos.info\(en\)](http://dr-cos.info(en)) [http://dr-cos.com\(jp\)](http://dr-cos.com(jp))  
MAIL [info@dr-cos.com](mailto:info@dr-cos.com)  
Twitter [https://twitter.com/@drcos\\_com](https://twitter.com/@drcos_com)  
facebook <https://www.facebook.com/drcoscom>

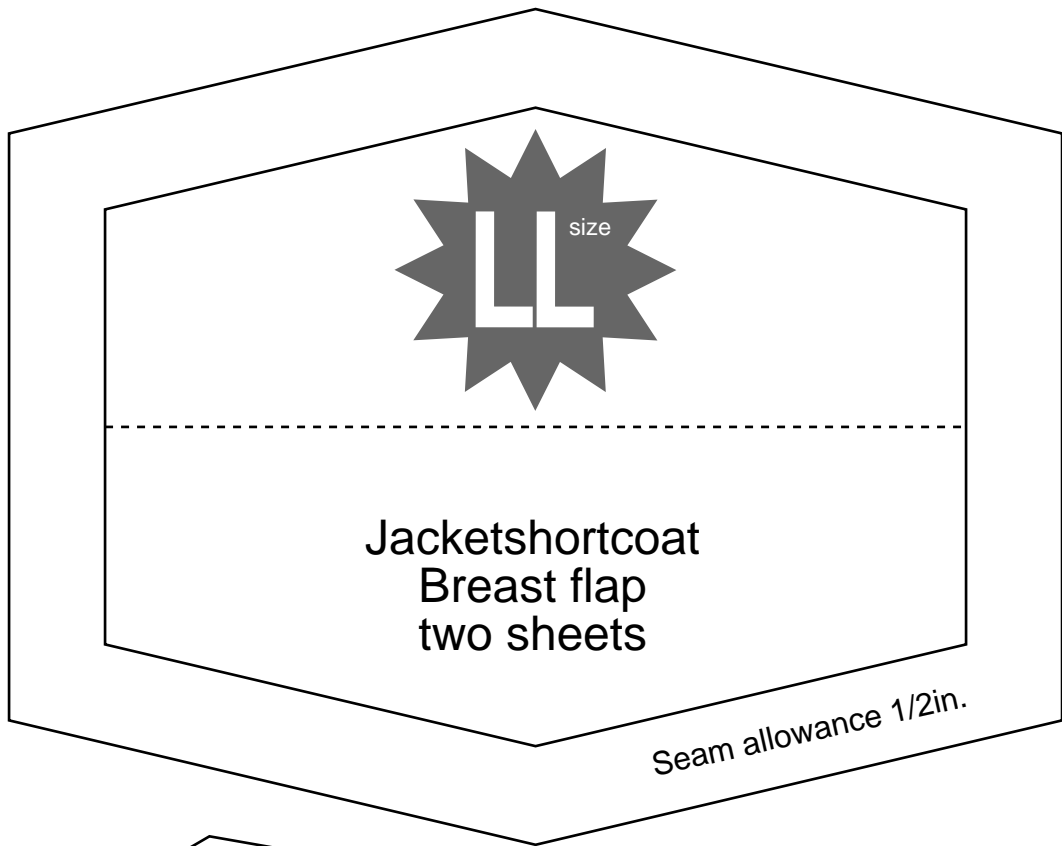


Jacketshortcoat  
Pocket  
two sheets

Seam allowance 1/2in.

Bonding line EA

Bonding line EA



Bonding line Bd

Bonding line Be

Bonding line EB

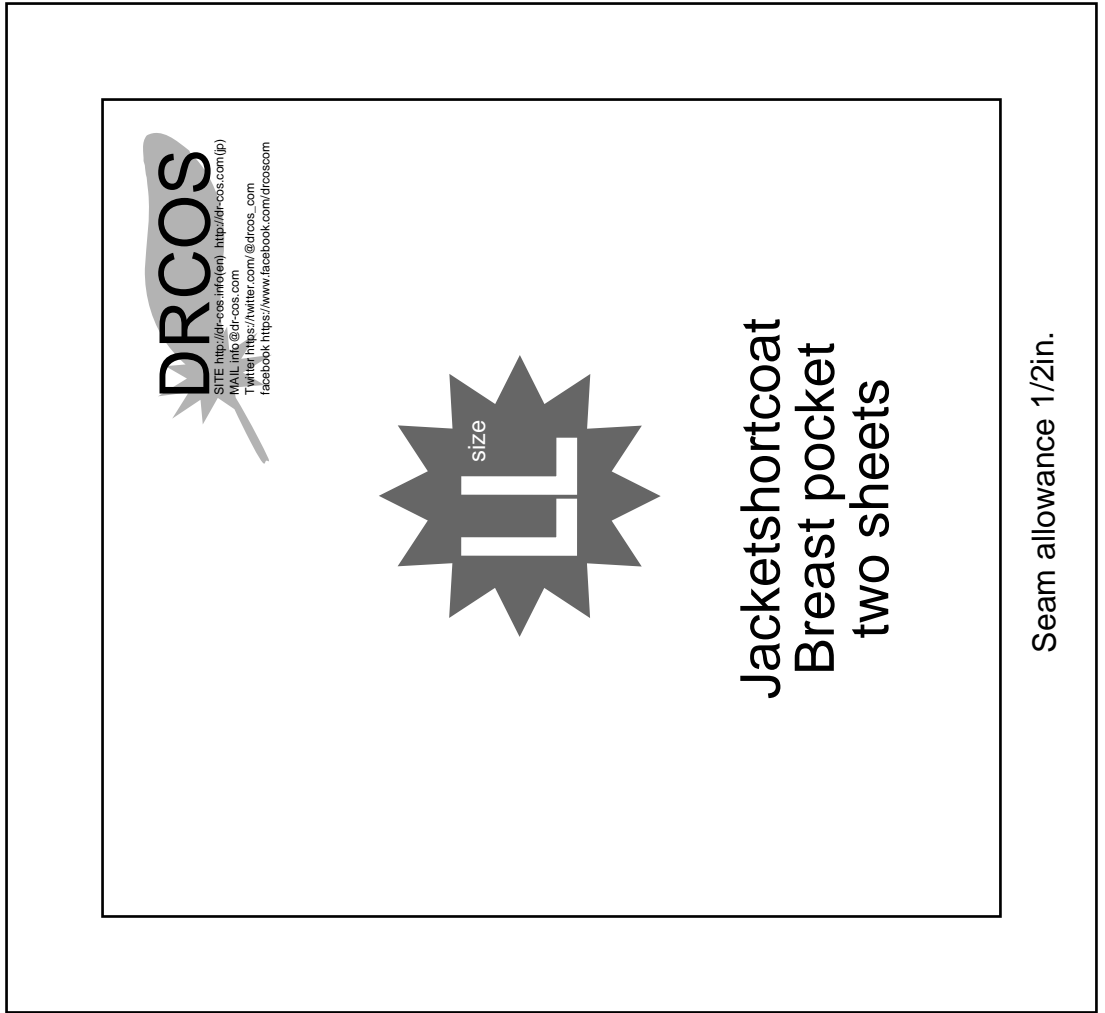
**DRCOS** Cd

SITE <http://drcos.info/en/>, [http://drcos.com\(pp\)](http://drcos.com/pp)  
MAIL [info@drcos.com](mailto:info@drcos.com)  
Twitter [@drcos\\_com](https://twitter.com/@drcos_com)  
facebook <https://www.facebook.com/drcoscom>

Bonding line EB

Bonding line Ce

Bonding line EC





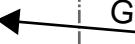
Bonding line Ce

Bonding line FB

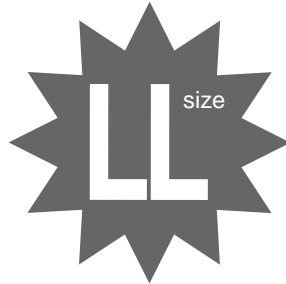
**LADIES' T**  
size

Jacketshortcoat  
Sleeve  
two sheets

Bonding line Cf



Bonding line FC



Jacketshortcoat  
Flap  
two sheets

Seam allowance 1/2in.

Bonding line GB

Bonding line Cf

Grain Line



Seam allowance 1/2in.

Bonding line GC